

IOWA STATE UNIVERSITY

OF SCIENCE AND TECHNOLOGY

**Peer Land Grant Universities
Faculty Salary Comparisons
2007-2008 through 2017-2018**

Institutional Research Report 2017

May 4, 2018

Office of Institutional Research

2420 Lincoln Way, Suite 203

Ames, Iowa 50014-8340

Phone 515 294-1181

Fax 515 294-4835

E-mail ir@iastate.edu

**Iowa State University
Peer Land Grant Universities Faculty Salary Comparisons
2007-2008 through 2017-2018**

Table of Contents

Introduction.....	i
College Summary Data.....	1
Department Data within College	
College of Agriculture and Life Sciences.....	6
College of Business.....	11
College of Design.....	13
College of Engineering.....	15
College of Human Sciences.....	18
College of Liberal Arts and Sciences	
Humanities.....	21
Science and Mathematics.....	24
Social Sciences.....	28
College Total.....	30
College of Veterinary Medicine.....	31
University Summary.....	32
Footnotes	

Introduction

Iowa State University Peer Land Grant Universities Faculty Salary Comparisons 2007-2008 through 2017-2018

INTRODUCTION

This report compares Iowa State University's average nine-month faculty salaries to those of the peer land grant universities for the academic years 2007-2008 through 2017-2018. The report is organized into three sections: summary data for the colleges with the College of Liberal Arts and Sciences broken down into three divisions; departmental data within each college; and footnotes.

All twelve-month salaries have been converted to nine-month equivalents for comparison purposes. The complete methodology used in the comparisons is described on page iii.

DISCUSSION

The 2017-2018 average nine-month salaries and comparative indices by faculty rank for the total university are:

Faculty Rank	Average Salary	Comparative Index
Professor	\$131,417	0.90
Associate Professor	\$98,853	0.91
Assistant Professor	\$85,588	0.92
All Ranks	\$107,940	0.91

Figure 1 and Figure 2 display the total university average salaries and indices by rank from 2007-2008 through 2017-2018.

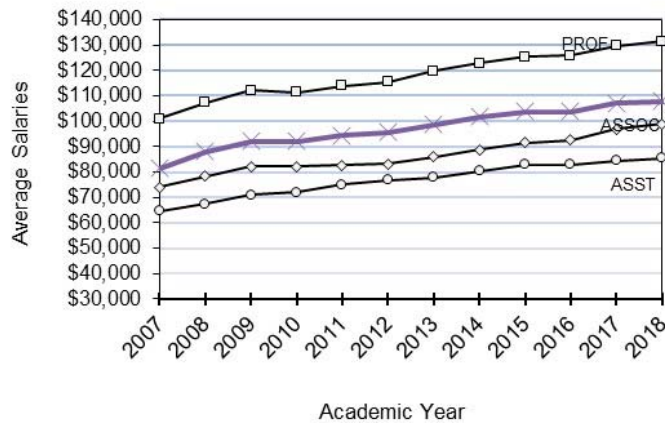


Figure 1. Iowa State University Average Faculty Salaries by Rank

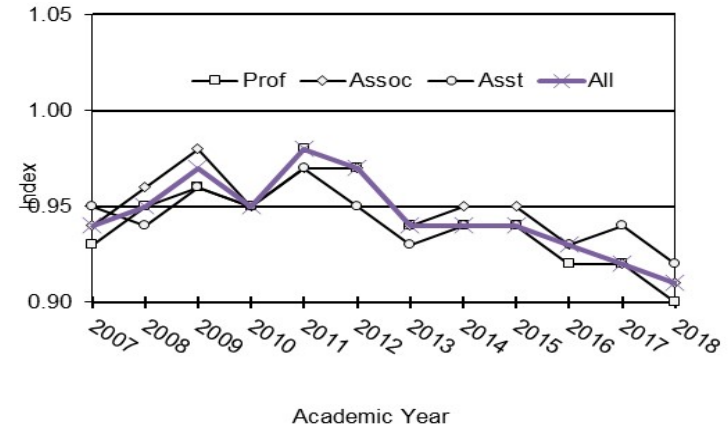


Figure 2. Index of Iowa State University Average Faculty Salaries Compared With Those of the Peers

From 2007-2008 through 2017-2018 the indices for *all ranks combined* range from 0.95 in 2007-08 to 0.91 in 2017-18. During this time the average percent increases in salaries for continuing faculty range from 0.0% in 2009 and 2017 to 6.0% in 2007-2008. The following table presents for each year the comparative index and the average percent increase in salaries for continuing faculty at Iowa State University.

Academic Year	Comparative Index	Average % Increase for Continuing Faculty
2007-2008	0.95	6.0%
2008-2009	0.97	5.5%
2009-2010	0.95	0.0%
2010-2011	0.98	1.9%
2011-2012	0.97	2.3%
2012-2013	0.94	2.4%
2013-2014	0.94	3.2%
2014-2015	0.94	3.5%
2015-2016	0.93	1.4%
2016-2017	0.92	3.8%
2017-2018	0.91	0.0%

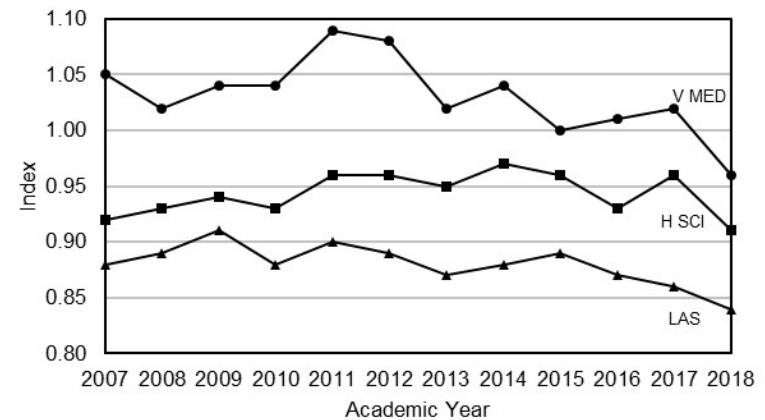
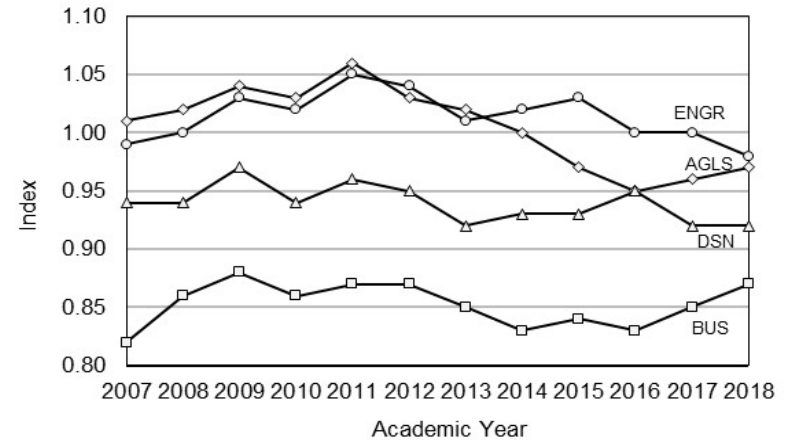
Iowa State University Peer Land Grant Universities Faculty Salary Comparisons 2007-2008 through 2017-2018

By college, the 2017-2018 indices for the Professor rank range from 0.78 in the College of Liberal Arts and Sciences (Social Sciences) to 1.03 in the College Engineering. Indices for Associate Professors range from 0.79 in the College of Liberal Arts and Sciences (Social Sciences) to 0.98 in the Colleges of Design and Veterinary Medicine. Assistant Professor Indices range from 0.86 in the College of Business to 1.07 in the College of Veterinary Medicine. The 2016-2017 average nine-month salaries and indices for each college and the three divisions within Liberal Arts and Sciences are as follows:

	Professor	Associate Professor	Assistant Professor
Agriculture & Life Sciences			
Average Salary	\$125,354	\$93,458	\$85,200
Comparative Index	0.97	0.96	0.97
Business			
Average Salary	\$192,670	\$161,387	\$152,121
Comparative Index	0.82	0.89	0.87
Design			
Average Salary	\$97,126	\$82,572	\$66,605
Comparative Index	0.83	0.98	0.92
Engineering			
Average Salary	\$163,176	\$108,646	\$91,124
Comparative Index	1.00	0.96	0.94
Human Sciences			
Average Salary	\$123,221	\$87,290	\$72,279
Comparative Index	0.91	0.94	0.90
Liberal Arts and Sciences			
Humanities			
Average Salary	\$99,454	\$74,519	\$63,882
Comparative Index	0.79	0.87	0.86
Science and Mathematics			
Average Salary	\$126,238	\$92,870	\$82,567
Comparative Index	0.85	0.88	0.90
Social Sciences			
Average Salary	\$127,449	\$85,746	\$79,945
Comparative Index	0.77	0.74	0.84
All Divisions			
Average Salary	\$120,978	\$83,253	\$74,711
Comparative Index	0.82	0.85	0.88
Veterinary Medicine			
Average Salary	\$136,506	\$107,530	\$97,743
Comparative Index	0.94	0.96	1.02
All Colleges			
Average Salary	\$131,417	\$98,853	\$85,588
Comparative Index	0.90	0.91	0.92

The college indices for all ranks combined are shown below.

Figure 4. Index by College of Iowa State University Average Faculty Salaries Compared with Those of Peers.



Iowa State University Peer Land Grant Universities Faculty Salary Comparisons 2007-2008 through 2017-2018

METHODOLOGY

The data used for the salary comparisons are collected through the Association of American Universities Data Exchange (AAUDE) and the Oklahoma State University *Faculty Salary Survey by Discipline*.

The peer land grant universities are:

University of California–Davis	Ohio State University
University of Illinois–Urbana	Pennsylvania State University
Michigan State University	Purdue University
University of Minnesota	Texas A&M University
North Carolina State University	University of Wisconsin–Madison

Disciplines are identified by a set of codes developed by the National Center for Education Statistics to provide a standard means of describing instructional programs. The university providing the data assigns a code to each discipline. These codes have been configured into collegiate structures similar to those at Iowa State University. In some cases more than one code has been used to form a department. For example, the codes for Physics, Astronomy and Astrophysics are used to form a Department of Physics and Astronomy. A discipline may be transferred to another college. For example, all peer Art departments are in the College of Design to correspond with Iowa State University.

Faculty are defined as those persons holding the traditional three faculty ranks of tenure-eligible faculty with a full-time equivalent (FTE) appointment are included. Excluded are faculty on leave-without-pay, appointments equivalent to Lecturer or Instructor or any faculty member who is not in a tenured or tenure-eligible position. Faculty with appointments of Assistant Dean, Associate Dean, Dean or higher are also excluded. In most cases chairpersons are included at full salary since supplemental stipends for administrative responsibilities are not generally identifiable. Twelve-month salaries for Iowa State University and the peers have been converted to nine-month equivalents using a 9/11 conversion factor.

The first department of rank determines where the salary is counted even though some faculty may have appointments in more than one department. The total full-time salary dollars are summed and divided by the headcount to calculate the average. Salaries are not reported for non-academic departments since these are not departments *of rank*. Beginning 2007-2008,

only tenured and tenure-eligible faculty with the rank of Full, Associate, or Assistant Professor are included.

The Iowa State University *All Ranks* salary average is the sum of the Iowa State University dollars for all ranks divided by the sum of the headcount for all ranks. For the peers, the average salary for each rank is multiplied by Iowa State's headcount for that rank. These dollars are then accumulated and divided by Iowa State's total headcount. This yields an All Ranks average for the peer universities that is based on Iowa State's mix of ranks. Similarly, the college peer averages for each rank are weighted by the headcount in each department at Iowa State to yield a college average that reflects the composition of departments within each college.

The index for each rank compares the average for Iowa State University to the average of the peer universities. For example, an average salary of \$75,000 for Iowa State University compared to a \$78,000 average for the peer universities yields an index of 0.96.

In 2016-2017 Penn State replaced Arizona as a peer institution. Data from the Penn State were imputed for this report using the previous years salaries adjusted for the average percent increase. This was necessary because the data were not available at the time the report was printed.

Data about median salaries was added to the report beginning in 2008 although some universities did not report median data. Beginning in 2013-14, all AAU institutions began providing median data but we do not receive median salary data from North Carolina State. Median salaries are weighted using the same methodology as the average salaries. For the peers, the median salary for each rank and department is multiplied by Iowa State's headcount for that rank and department. These dollars are then accumulated and divided by Iowa State's total headcount.

The footnotes at the end of the report provide additional details particular to individual departments.

* * *

Questions regarding this report may be directed to Sandy Gahn, Office of Institutional Research, 515-294-1181.

College Summary Data

Iowa State University
Peer Land Grant Universities Faculty Salary Comparisons
2007-2008 through 2017-2018

COLLEGE/DEPARTMENT	2007-2008	2008-2009	2009-2010	2010-2011	2011-2012	2012-2013	2013-2014	2014-2015	2015-2016	2016-2017	2017-2018			PEER	
											AVERAGE SALARY & INDEX	MEDIAN SALARY & INDEX	COUNT	AVERAGE SALARY	MEDIAN SALARY
COLLEGE SUMMARIES															
AGRICULTURE AND LIFE SCIENCES															
Average Salaries															
Professor	\$102,892	\$107,374	\$106,782	\$107,576	\$108,040	\$112,239	\$116,012	\$118,794	\$119,360	\$123,875	\$125,354	\$119,526	130	\$128,880	\$126,461
Associate Professor	\$76,628	\$81,030	\$80,520	\$81,565	\$80,468	\$83,626	\$86,293	\$87,010	\$88,895	\$90,978	\$93,458	\$92,939	61	\$97,834	\$97,289
Assistant Professor	\$65,978	\$69,989	\$70,545	\$72,899	\$74,854	\$77,262	\$80,228	\$82,229	\$81,577	\$83,223	\$85,200	\$83,581	50	\$87,644	\$86,671
Instructor															
All	\$90,342	\$93,853	\$94,169	\$96,129	\$96,628	\$100,117	\$103,038	\$104,219	\$104,254	\$107,079	\$108,950	\$105,339	241	\$112,467	\$110,822
Index															
Professor	1.01	1.02	1.01	1.05	1.02	1.00	0.99	0.96	0.94	0.95	0.97	0.95			
Associate Professor	1.04	1.07	1.06	1.09	1.07	1.07	1.02	0.99	0.99	0.95	0.96	0.96			
Assistant Professor	1.08	1.08	1.09	1.10	1.06	1.04	1.04	1.02	0.98	0.98	0.97	0.96			
Instructor															
All	1.02	1.04	1.03	1.06	1.03	1.02	1.00	0.97	0.95	0.96	0.97	0.95			
BUSINESS															
Average Salaries															
Professor	\$145,558	\$154,734	\$156,476	\$159,876	\$163,565	\$171,832	\$174,570	\$170,611	\$174,160	\$183,772	\$192,670	\$192,006	15	\$234,867	\$248,159
Associate Professor	\$118,235	\$124,559	\$124,887	\$127,536	\$130,740	\$137,047	\$141,728	\$145,892	\$149,744	\$157,085	\$161,387	\$162,521	40	\$180,867	\$195,922
Assistant Professor	\$110,322	\$117,691	\$121,544	\$123,711	\$128,803	\$132,787	\$136,943	\$144,912	\$147,268	\$154,718	\$152,121	\$152,109	28	\$175,856	\$177,297
Instructor															
All	\$123,926	\$129,909	\$132,226	\$134,626	\$137,349	\$144,126	\$147,389	\$150,190	\$153,424	\$161,459	\$163,915	\$164,337	83	\$188,936	\$199,079
Index															
Professor	0.84	0.86	0.85	0.87	0.86	0.81	0.82	0.79	0.75	0.80	0.82	0.77			
Associate Professor	0.91	0.92	0.88	0.91	0.93	0.92	0.87	0.88	0.87	0.88	0.89	0.83			
Assistant Professor	0.82	0.87	0.85	0.85	0.84	0.82	0.80	0.84	0.83	0.86	0.87	0.86			
Instructor															
All	0.86	0.88	0.86	0.87	0.87	0.85	0.83	0.84	0.83	0.85	0.87	0.83			
DESIGN															
Average Salaries															
Professor	\$87,774	\$97,254	\$95,255	\$94,991	\$95,519	\$98,397	\$98,388	\$98,696	\$101,522	\$97,722	\$97,126	\$98,271	19	\$116,483	\$111,511
Associate Professor	\$66,795	\$70,127	\$68,795	\$69,835	\$69,776	\$70,706	\$73,764	\$77,866	\$78,819	\$80,075	\$82,572	\$78,471	32	\$84,513	\$83,045
Assistant Professor	\$57,422	\$58,176	\$57,176	\$59,200	\$59,454	\$62,032	\$63,712	\$63,761	\$63,720	\$66,000	\$66,605	\$66,065	32	\$72,168	\$71,831
Instructor															
All	\$67,766	\$71,628	\$71,806	\$72,507	\$72,962	\$74,117	\$76,495	\$77,966	\$78,998	\$79,464	\$79,748	\$78,220	83	\$87,072	\$85,238
Index															
Professor	0.90	0.96	0.93	0.95	0.96	0.91	0.91	0.88	0.91	0.86	0.83	0.88			
Associate Professor	0.94	0.97	0.95	0.96	0.95	0.92	0.94	0.97	0.99	0.98	0.98	0.94			
Assistant Professor	0.99	0.98	0.95	0.98	0.98	0.94	0.96	0.93	0.94	0.93	0.92	0.92			
Instructor															
All	0.94	0.97	0.94	0.96	0.95	0.92	0.93	0.93	0.95	0.92	0.92	0.92			

Iowa State University
Peer Land Grant Universities Faculty Salary Comparisons
2007-2008 through 2017-2018

COLLEGE/DEPARTMENT	2007-2008	2008-2009	2009-2010	2010-2011	2011-2012	2012-2013	2013-2014	2014-2015	2015-2016	2016-2017	2017-2018			PEER	
											AVERAGE SALARY & INDEX	MEDIAN SALARY & INDEX	COUNT	AVERAGE SALARY	MEDIAN SALARY
COLLEGE SUMMARIES, continued															
ENGINEERING															
Average Salaries															
Professor	\$129,810	\$137,955	\$137,806	\$142,435	\$145,700	\$146,666	\$151,319	\$156,053	\$153,900	\$159,641	\$163,176	\$165,059	80	\$162,558	\$161,334
Associate Professor	\$93,416	\$97,645	\$97,089	\$98,912	\$98,950	\$100,191	\$101,991	\$103,693	\$103,571	\$106,442	\$108,646	\$108,307	59	\$113,585	\$113,520
Assistant Professor	\$79,559	\$82,570	\$82,369	\$84,784	\$85,231	\$86,748	\$87,989	\$88,111	\$87,905	\$90,714	\$91,124	\$90,054	64	\$96,707	\$95,363
Instructor															
All	\$105,334	\$110,200	\$108,656	\$113,424	\$116,186	\$118,111	\$122,161	\$123,663	\$120,715	\$124,570	\$124,611	\$124,918	203	\$127,563	\$126,639
Index															
Professor	1.00	1.04	1.03	1.05	1.06	1.02	1.04	1.06	1.04	1.03	1.00	1.02			
Associate Professor	1.01	1.03	1.02	1.05	1.01	0.99	0.98	0.99	0.97	0.96	0.96	0.95			
Assistant Professor	0.97	1.00	0.99	1.02	1.00	0.98	0.99	0.97	0.96	0.96	0.94	0.94			
Instructor															
All	1.00	1.03	1.02	1.05	1.04	1.01	1.02	1.03	1.00	1.00	0.98	0.99			
HUMAN SCIENCES ³															
Average Salaries															
Professor	\$95,724	\$99,563	\$99,912	\$102,799	\$104,783	\$107,549	\$112,400	\$113,019	\$115,951	\$119,436	\$123,221	\$120,196	28	\$136,139	\$132,943
Associate Professor	\$70,012	\$72,174	\$71,976	\$73,615	\$76,771	\$77,464	\$80,933	\$85,149	\$85,075	\$86,439	\$87,290	\$87,204	39	\$93,094	\$93,461
Assistant Professor	\$57,831	\$60,031	\$61,712	\$62,005	\$64,033	\$66,212	\$67,646	\$70,096	\$70,358	\$73,244	\$72,279	\$72,299	57	\$79,875	\$76,991
Instructor															
All	\$74,223	\$78,032	\$79,023	\$79,648	\$79,885	\$82,381	\$84,799	\$86,236	\$87,701	\$89,331	\$88,503	\$87,803	124	\$96,738	\$94,805
Index															
Professor	0.91	0.92	0.91	0.95	0.96	0.96	0.99	0.93	0.94	0.91	0.91	0.90			
Associate Professor	0.94	0.96	0.94	0.97	0.97	0.95	0.98	1.00	0.99	0.95	0.94	0.93			
Assistant Professor	0.95	0.95	0.94	0.94	0.95	0.95	0.93	0.97	0.95	0.93	0.90	0.94			
Instructor															
All	0.93	0.94	0.93	0.96	0.96	0.95	0.97	0.96	0.96	0.93	0.91	0.93			
LIBERAL ARTS AND SCIENCES															
HUMANITIES															
Average Salaries															
Professor	\$80,042	\$78,209	\$79,039	\$78,582	\$81,198	\$84,396	\$90,284	\$97,514	\$95,241	\$99,201	\$99,454	\$102,744	39	\$125,569	\$119,145
Associate Professor	\$60,230	\$61,676	\$60,318	\$61,033	\$61,893	\$64,590	\$69,721	\$72,153	\$72,395	\$74,763	\$74,519	\$74,534	61	\$85,865	\$85,653
Assistant Professor	\$50,433	\$52,222	\$52,559	\$52,950	\$53,744	\$55,302	\$58,503	\$60,990	\$61,257	\$64,124	\$63,882	\$63,412	44	\$74,066	\$73,198
Instructor															
All	\$64,703	\$64,639	\$63,605	\$64,096	\$65,030	\$66,431	\$71,104	\$74,945	\$74,057	\$77,813	\$78,022	\$78,776	144	\$93,013	\$90,918
Index															
Professor	0.80	0.77	0.77	0.77	0.78	0.77	0.82	0.87	0.82	0.82	0.79	0.86			
Associate Professor	0.86	0.88	0.84	0.86	0.85	0.85	0.91	0.92	0.89	0.89	0.87	0.87			
Assistant Professor	0.86	0.88	0.86	0.89	0.89	0.87	0.90	0.90	0.88	0.89	0.86	0.87			
Instructor															
All	0.83	0.83	0.82	0.83	0.83	0.83	0.88	0.90	0.87	0.87	0.84	0.87			

Iowa State University
Peer Land Grant Universities Faculty Salary Comparisons
2007-2008 through 2017-2018

COLLEGE/DEPARTMENT	2007-2008	2008-2009	2009-2010	2010-2011	2011-2012	2012-2013	2013-2014	2014-2015	2015-2016	2016-2017	2017-2018			PEER	
											AVERAGE SALARY & INDEX	MEDIAN SALARY & INDEX	COUNT	AVERAGE SALARY	MEDIAN SALARY
COLLEGE SUMMARIES, continued															
SCIENCE AND MATHEMATICS															
Average Salaries															
Professor	\$108,734	\$112,876	\$111,080	\$112,959	\$113,549	\$116,076	\$117,180	\$121,879	\$122,841	\$126,524	\$126,238	\$124,747	119	\$148,290	\$142,764
Associate Professor	\$76,248	\$81,504	\$79,532	\$79,952	\$81,925	\$83,606	\$85,483	\$88,443	\$89,266	\$91,713	\$92,870	\$91,768	51	\$105,500	\$104,859
Assistant Professor	\$68,039	\$70,896	\$71,900	\$71,973	\$71,364	\$72,632	\$75,050	\$77,751	\$79,146	\$81,786	\$82,567	\$81,832	50	\$91,897	\$90,687
Instructor															
All	\$91,017	\$95,633	\$95,463	\$96,729	\$97,272	\$99,410	\$101,672	\$104,801	\$104,418	\$107,875	\$108,578	\$107,349	220	\$125,554	\$122,141
Index															
Professor	0.92	0.93	0.91	0.94	0.92	0.89	0.88	0.89	0.88	0.86	0.85	0.87			
Associate Professor	0.92	0.96	0.92	0.93	0.93	0.90	0.90	0.92	0.90	0.90	0.88	0.88			
Assistant Professor	0.96	0.97	0.97	0.97	0.96	0.93	0.96	0.93	0.92	0.93	0.90	0.90			
Instructor															
All	0.93	0.95	0.92	0.94	0.93	0.90	0.89	0.90	0.89	0.88	0.86	0.88			
SOCIAL SCIENCES															
Average Salaries															
Professor	\$114,453	\$118,100	\$115,002	\$117,194	\$116,208	\$121,640	\$121,096	\$120,999	\$123,025	\$124,687	\$127,449	\$118,426	33	\$166,325	\$158,828
Associate Professor	\$77,167	\$80,003	\$79,865	\$79,749	\$80,964	\$81,757	\$80,926	\$83,669	\$84,795	\$87,079	\$85,746	\$85,617	17	\$115,649	\$111,952
Assistant Professor	\$57,381	\$59,174	\$60,400	\$62,003	\$62,399	\$63,946	\$67,155	\$71,912	\$75,237	\$78,270	\$79,945	\$79,970	16	\$94,988	\$95,176
Instructor															
All	\$82,394	\$83,015	\$81,601	\$84,833	\$88,111	\$92,573	\$94,602	\$99,004	\$99,750	\$101,933	\$105,191	\$100,652	66	\$135,978	\$131,323
Index															
Professor	0.86	0.91	0.87	0.85	0.84	0.83	0.82	0.83	0.79	0.78	0.77	0.75			
Associate Professor	0.88	0.91	0.89	0.89	0.88	0.85	0.83	0.84	0.81	0.79	0.74	0.76			
Assistant Professor	0.82	0.85	0.85	0.87	0.87	0.85	0.85	0.88	0.87	0.88	0.84	0.84			
Instructor															
All	0.86	0.90	0.87	0.87	0.86	0.84	0.83	0.84	0.81	0.80	0.77	0.77			
LIBERAL ARTS AND SCIENCES															
Average Salaries															
Professor	\$101,425	\$104,453	\$103,687	\$105,720	\$107,218	\$111,137	\$113,119	\$117,556	\$118,230	\$121,261	\$120,978	\$119,162	191	\$146,766	\$140,717
Associate Professor	\$70,960	\$73,819	\$72,702	\$73,073	\$74,076	\$76,165	\$78,652	\$81,840	\$82,226	\$84,623	\$83,253	\$82,808	129	\$97,552	\$96,712
Assistant Professor	\$59,473	\$61,946	\$61,607	\$62,460	\$62,523	\$63,374	\$66,053	\$69,333	\$71,352	\$74,365	\$74,711	\$74,193	110	\$85,214	\$84,344
Instructor															
All	\$81,085	\$83,723	\$82,804	\$84,579	\$85,727	\$88,046	\$91,057	\$95,041	\$94,718	\$98,085	\$97,825	\$96,752	430	\$116,256	\$113,094
Index															
Professor	0.89	0.89	0.87	0.89	0.88	0.86	0.86	0.88	0.86	0.84	0.82	0.85			
Associate Professor	0.89	0.92	0.89	0.90	0.89	0.87	0.89	0.90	0.88	0.87	0.85	0.86			
Assistant Professor	0.90	0.92	0.91	0.92	0.91	0.89	0.91	0.91	0.90	0.91	0.88	0.88			
Instructor															
All	0.89	0.91	0.88	0.90	0.89	0.87	0.88	0.89	0.87	0.86	0.84	0.86			

**Iowa State University
Peer Land Grant Universities Faculty Salary Comparisons
2007-2008 through 2017-2018**

COLLEGE/DEPARTMENT	2007-2008	2008-2009	2009-2010	2010-2011	2011-2012	2012-2013	2013-2014	2014-2015	2015-2016	2016-2017	2017-2018			PEER	
											AVERAGE SALARY & INDEX	MEDIAN SALARY & INDEX	COUNT	AVERAGE SALARY	MEDIAN SALARY
COLLEGE SUMMARIES, continued															
VETERINARY MEDICINE															
Average Salaries															
Professor	\$109,606	\$118,604	\$120,425	\$122,756	\$121,724	\$126,092	\$127,321	\$128,753	\$132,319	\$136,497	\$136,506	\$128,600	40	\$145,671	\$133,761
Associate Professor	\$87,263	\$90,610	\$93,538	\$93,976	\$94,363	\$95,374	\$96,985	\$99,127	\$100,499	\$106,573	\$107,530	\$104,575	27	\$112,413	\$109,836
Assistant Professor	\$75,331	\$81,476	\$81,890	\$84,321	\$85,450	\$89,904	\$91,762	\$94,080	\$95,704	\$97,744	\$97,743	\$92,431	30	\$95,436	\$92,668
Instructor															
All	\$93,744	\$99,994	\$101,303	\$103,553	\$103,440	\$107,182	\$108,296	\$109,670	\$112,144	\$115,941	\$116,452	\$110,727	97	\$120,877	\$114,392
Index															
Professor	1.02	1.05	1.05	1.11	1.09	1.04	1.05	1.00	1.01	1.01	0.94	0.96			
Associate Professor	1.03	1.01	1.04	1.07	1.07	0.97	0.99	0.96	0.95	0.98	0.96	0.95			
Assistant Professor	1.00	1.04	1.02	1.09	1.07	1.06	1.10	1.06	1.09	1.07	1.02	1.00			
Instructor															
All	1.02	1.04	1.04	1.09	1.08	1.02	1.04	1.00	1.01	1.02	0.96	0.97			

**Iowa State University
Peer Land Grant Universities Faculty Salary Comparisons
2007-2008 through 2017-2018**

COLLEGE/DEPARTMENT	2007-2008	2008-2009	2009-2010	2010-2011	2011-2012	2012-2013	2013-2014	2014-2015	2015-2016	2016-2017	2017-2018			PEER	
											AVERAGE SALARY & INDEX	MEDIAN SALARY & INDEX	COUNT	AVERAGE SALARY	MEDIAN SALARY
											UNIVERSITY SUMMARY				
Average Salaries															
Professor	\$107,212	\$112,250	\$111,444	\$113,945	\$115,564	\$119,829	\$122,850	\$125,475	\$125,963	\$129,753	\$131,417	\$128,747	503	\$145,460	\$141,426
Associate Professor	\$78,355	\$82,264	\$82,058	\$82,575	\$83,273	\$85,918	\$88,880	\$91,462	\$92,629	\$96,870	\$98,853	\$98,134	387	\$108,162	\$109,078
Assistant Professor	\$67,359	\$71,057	\$72,086	\$74,943	\$76,761	\$77,801	\$80,302	\$82,819	\$82,865	\$84,437	\$85,588	\$84,558	371	\$93,246	\$92,038
Instructor															
All	\$87,981	\$92,009	\$92,016	\$94,376	\$95,708	\$98,673	\$101,644	\$103,863	\$103,738	\$107,060	\$107,940	\$106,351	1,261	\$118,651	\$116,968
Index															
Professor	0.95	0.96	0.95	0.98	0.97	0.94	0.95	0.94	0.92	0.92	0.90	0.91			
Associate Professor	0.96	0.98	0.95	0.97	0.97	0.94	0.94	0.95	0.93	0.92	0.91	0.90			
Assistant Professor	0.94	0.96	0.95	0.97	0.95	0.93	0.94	0.94	0.93	0.94	0.92	0.92			
Instructor															
All	0.95	0.97	0.95	0.98	0.97	0.94	0.94	0.94	0.93	0.92	0.91	0.91			

Department Data within College

Iowa State University
Peer Land Grant Universities Faculty Salary Comparisons
2007-2008 through 2017-2018

COLLEGE/DEPARTMENT											2017-2018			PEER	
											AVERAGE SALARY & INDEX	MEDIAN SALARY & INDEX	COUNT	AVERAGE SALARY	MEDIAN SALARY
	2007-2008	2008-2009	2009-2010	2010-2011	2011-2012	2012-2013	2013-2014	2014-2015	2015-2016	2016-2017					
COLLEGE OF AGRICULTURE AND LIFE SCIENCE															
AGRICULTURAL AND BIOSYSTEMS ENGINEERING ^{1,2}															
Average Salaries															
Professor	\$108,506	\$115,319	\$115,797	\$121,862	\$114,768	\$122,108	\$124,379	\$136,185	\$136,513	\$142,246	\$133,366	\$139,791	12	\$141,547	\$130,249
Associate Professor	\$80,677	\$94,456	\$87,757	\$87,829	\$88,756	\$90,780	\$95,180	\$95,349	\$96,570	\$99,846	\$97,809	\$100,085	8	\$107,890	\$104,932
Assistant Professor	\$74,152	\$74,882	\$77,232	\$78,340	\$82,421	\$84,233	\$83,092	\$84,334	\$83,418	\$85,696	\$84,104	\$82,775	3	\$89,083	\$86,806
Instructor															
All	\$89,875	\$95,576	\$96,842	\$99,496	\$97,833	\$101,616	\$104,503	\$113,379	\$112,208	\$117,875	\$114,573	\$118,543	23	\$122,997	\$115,777
Index															
Professor	1.00	1.04	1.05	1.13	1.01	1.01	0.99	1.04	1.05	1.02	0.94	1.07			
Associate Professor	0.99	1.10	1.07	1.04	1.03	1.01	1.05	1.01	1.00	0.96	0.91	0.95			
Assistant Professor	1.05	1.02	1.03	1.09	1.11	1.08	1.00	0.99	0.97	1.00	0.94	0.95			
Instructor															
All	1.01	1.05	1.05	1.09	1.03	1.02	1.02	1.02	1.02	1.00	0.93	1.02			
AGRICULTURAL EDUCATION AND STUDIES															
Average Salaries															
Professor	\$91,650	\$97,756	\$97,756	\$99,214	\$100,671	\$103,928	\$106,587	\$109,238	\$110,310	\$118,469	\$122,623	\$126,968	3	\$120,855	\$125,181
Associate Professor	\$82,934	\$85,243	\$87,256	\$84,928	\$88,734	\$90,445	\$91,824	\$103,282	\$102,692		\$85,000	\$85,000	1	\$86,375	\$81,731
Assistant Professor	\$71,891	\$72,794	\$73,825	\$75,718	\$75,831	\$81,174	\$78,016	\$81,302	\$77,836	\$73,275	\$69,688	\$68,125	4	\$78,197	\$71,539
Instructor															
All	\$80,931	\$82,773	\$84,787	\$84,609	\$84,951	\$90,782	\$92,142	\$97,273	\$94,184	\$99,100	\$91,453	\$92,300	8	\$95,216	\$92,929
Index															
Professor	0.90	0.97	0.95	0.99	1.01	0.96	1.00	0.94	0.96	1.00	1.01	1.01			
Associate Professor	1.10	1.09	1.13	1.11	1.20	1.19	1.19	1.26	1.30		0.98	1.04			
Assistant Professor	1.21	1.09	1.17	1.30	1.28	1.25	1.12	1.18	1.08	0.96	0.89	0.95			
Instructor															
All	1.05	1.05	1.07	1.14	1.16	1.12	1.09	1.08	1.07	0.98	0.96	0.99			
AGRONOMY															
Average Salaries															
Professor	\$99,289	\$102,401	\$102,214	\$104,656	\$103,667	\$104,648	\$108,605	\$113,637	\$113,807	\$118,806	\$118,371	\$114,461	31	\$116,150	\$118,214
Associate Professor	\$71,716	\$74,580	\$74,079	\$73,349	\$75,379	\$79,279	\$87,346	\$96,530	\$100,120	\$103,448	\$105,995	\$106,777	6	\$91,640	\$92,824
Assistant Professor	\$60,425	\$68,008	\$75,987	\$83,250	\$85,217	\$88,836	\$95,259	\$93,000	\$89,749	\$89,439	\$87,103	\$86,219	5	\$82,749	\$82,777
Instructor															
All	\$89,903	\$92,723	\$94,671	\$97,883	\$98,132	\$100,122	\$103,979	\$108,444	\$108,536	\$112,208	\$112,881	\$110,001	42	\$108,672	\$110,368
Index															
Professor	1.01	1.01	1.00	1.05	1.00	0.95	0.98	0.96	0.97	1.05	1.02	0.97			
Associate Professor	0.98	0.99	0.99	0.96	0.95	0.97	1.04	1.10	1.13	1.13	1.16	1.15			
Assistant Professor	0.94	1.05	1.17	1.20	1.21	1.20	1.23	1.19	1.13	1.09	1.05	1.04			
Instructor															
All	1.00	1.01	1.01	1.05	1.01	0.97	1.01	1.00	1.01	1.06	1.04	1.00			

Iowa State University
Peer Land Grant Universities Faculty Salary Comparisons
2007-2008 through 2017-2018

COLLEGE/DEPARTMENT	2007-2008	2008-2009	2009-2010	2010-2011	2011-2012	2012-2013	2013-2014	2014-2015	2015-2016	2016-2017	2017-2018			PEER	
											AVERAGE SALARY & INDEX	MEDIAN SALARY & INDEX	COUNT	AVERAGE SALARY	MEDIAN SALARY
COLLEGE OF AGRICULTURE & LIFE SCIENCES, continued															
ANIMAL SCIENCE															
Average Salaries															
Professor	\$ 100,022	\$ 102,111	\$ 102,549	\$ 104,603	\$ 105,270	\$ 111,631	\$ 112,009	\$ 116,091	\$ 116,307	\$ 122,025	\$ 118,075	\$ 114,532	20	\$ 118,400	\$ 111,172
Associate Professor	\$ 73,357	\$ 77,329	\$ 79,187	\$ 75,336	\$ 76,354	\$ 78,580	\$ 82,550	\$ 83,009	\$ 87,457	\$ 89,579	\$ 89,579	\$ 88,472	11	\$ 92,100	\$ 92,313
Assistant Professor	\$ 63,188	\$ 69,584	\$ 69,703	\$ 72,099	\$ 75,030	\$ 78,286	\$ 78,696	\$ 80,068	\$ 81,597	\$ 83,471	\$ 85,896	\$ 79,941	8	\$ 83,833	\$ 82,912
Instructor															
All	\$ 89,863	\$ 92,850	\$ 93,278	\$ 94,584	\$ 95,466	\$ 99,633	\$ 101,092	\$ 105,298	\$ 105,268	\$ 109,242	\$ 103,437	\$ 100,087	39	\$ 103,892	\$ 100,056
Index															
Professor	1.01	1.01	0.99	1.04	1.02	1.04	1.01	1.02	0.98	1.02	1.00	1.03			
Associate Professor	0.97	1.01	1.02	0.97	0.99	0.99	1.04	1.01	1.00	1.01	0.97	0.96			
Assistant Professor	1.04	1.00	1.08	1.06	1.08	1.05	1.03	1.03	1.04	1.02	1.02	0.96			
Instructor															
All	1.00	1.01	1.00	1.03	1.02	1.03	1.01	1.02	0.99	1.02	1.00	1.00			
BIOCHEMISTRY, BIOPHYSICS, AND MOLECULAR BIOLOGY ¹															
Average Salaries															
Professor	\$ 117,082	\$ 123,786	\$ 113,629	\$ 115,670	\$ 117,372	\$ 122,444	\$ 126,957	\$ 129,393	\$ 130,684	\$ 137,825	\$ 145,026	\$ 139,008	7	\$ 147,829	\$ 145,425
Associate Professor	\$ 78,180	\$ 82,826	\$ 79,749	\$ 79,749	\$ 80,945	\$ 82,766	\$ 83,759	\$ 82,082	\$ 82,902	\$ 85,257	\$ 86,897	\$ 87,381	3	\$ 97,418	\$ 94,204
Assistant Professor			\$ 69,850	\$ 69,850	\$ 70,898	\$ 72,670	\$ 74,470	\$ 73,433	\$ 75,343	\$ 77,177	\$ 78,595	\$ 78,595	2	\$ 87,671	\$ 86,713
Instructor															
All	\$ 105,411	\$ 111,498	\$ 102,589	\$ 104,074	\$ 105,611	\$ 109,787	\$ 113,487	\$ 112,869	\$ 114,184	\$ 113,720	\$ 119,422	\$ 116,032	12	\$ 125,200	\$ 122,834
Index															
Professor	1.00	1.00	0.89	0.95	0.94	0.90	0.91	0.91	0.85	0.89	0.98	0.96			
Associate Professor	1.03	1.05	0.98	1.03	0.97	0.94	0.92	0.92	0.87	0.83	0.89	0.93			
Assistant Professor			1.01		0.99	1.00	0.99	0.92	0.88	0.87	0.90	0.91			
Instructor															
All	1.01	1.01	0.91	0.96	0.95	0.91	0.92	0.91	0.85	0.88	0.95	0.94			
ECOLOGY, EVOLUTION, AND ORGANISMAL BIOLOGY ¹															
Average Salaries															
Professor	\$ 79,347	\$ 89,113	\$ 89,113	\$ 89,113	\$ 90,450	\$ 92,614	\$ 94,592	\$ 102,214	\$ 102,380	\$ 106,141	\$ 109,184	\$ 109,184	2	\$ 134,421	\$ 117,591
Associate Professor					\$ 76,834	\$ 79,139	\$ 82,496	\$ 85,532	\$ 85,742	\$ 88,369	\$ 90,480	\$ 90,480	2	\$ 96,259	\$ 95,840
Assistant Professor	\$ 67,015	\$ 71,660	\$ 71,660	\$ 71,660		\$ 71,723	\$ 74,144	\$ 76,708	\$ 76,782	\$ 79,671	\$ 75,000	\$ 75,000	1	\$ 86,778	\$ 83,400
Instructor															
All	\$ 75,823	\$ 86,204	\$ 86,204	\$ 86,204	\$ 88,181	\$ 87,705	\$ 89,943	\$ 93,833	\$ 92,378	\$ 96,266	\$ 94,866	\$ 94,866	5	\$ 109,627	\$ 102,052
Index															
Professor	0.74	0.81	0.78	0.80	0.77	0.75	0.75	0.81	0.80	0.74	0.81	0.93			
Associate Professor					0.98	0.96	0.97	0.98	0.96	0.83	0.94	0.94			
Assistant Professor	1.04	1.10	1.09	1.04		0.98	1.01	1.01	0.96	0.90	0.86	0.90			
Instructor															
All	0.80	0.84	0.81	0.82	0.79	0.79	0.80	0.88	0.86	0.78	0.87	0.93			

Iowa State University
Peer Land Grant Universities Faculty Salary Comparisons
2007-2008 through 2017-2018

COLLEGE/DEPARTMENT											2017-2018			PEER	
											AVERAGE SALARY & INDEX	MEDIAN SALARY & INDEX	COUNT	AVERAGE SALARY	MEDIAN SALARY
	2007-2008	2008-2009	2009-2010	2010-2011	2011-2012	2012-2013	2013-2014	2014-2015	2015-2016	2016-2017					
COLLEGE OF AGRICULTURE & LIFE SCIENCES, continued															
ECONOMICS															
Average Salaries															
Professor	\$123,716	\$133,440	\$131,624	\$135,221	\$137,934	\$145,107	\$155,683	\$164,484	\$164,719	\$170,033	\$165,685	\$143,845	10	\$151,009	\$153,186
Associate Professor	\$98,760	\$104,085	\$121,358	\$122,691	\$110,673	\$113,254	\$116,149	\$119,010	\$112,575	\$116,385	\$120,745	\$124,892	4	\$117,710	\$117,115
Assistant Professor	\$75,861	\$90,218	\$97,500	\$99,916	\$101,415	\$98,062	\$103,847	\$108,626	\$109,542	\$112,941	\$113,019	\$113,302	8	\$104,731	\$107,917
Instructor															
All	\$117,624	\$125,664	\$127,815	\$129,242	\$130,800	\$134,816	\$141,511	\$143,049	\$141,125	\$143,338	\$138,363	\$129,292	22	\$128,126	\$130,166
Index															
Professor	1.09	1.12	1.11	1.17	1.15	1.14	1.21	1.24	1.16	1.19	1.10	0.94			
Associate Professor	1.10	1.14	1.38	1.38	1.19	1.14	1.17	1.13	1.04	1.02	1.03	1.07			
Assistant Professor	1.01	1.16	1.25	1.25	1.21	1.10	1.15	1.15	1.08	1.12	1.08	1.05			
Instructor															
All	1.09	1.13	1.14	1.20	1.16	1.13	1.20	1.21	1.13	1.15	1.08	0.99			
ENTOMOLOGY															
Average Salaries															
Professor	\$88,798	\$93,926	\$92,771	\$88,157	\$95,920	\$97,584	\$101,471	\$99,213	\$101,031	\$113,985	\$99,527	\$88,754	4	\$126,652	\$120,058
Associate Professor	\$68,607	\$72,038	\$72,038	\$67,314	\$71,490	\$78,629	\$79,152	\$74,547	\$75,292	\$77,815	\$77,140	\$77,870	3	\$97,378	\$89,614
Assistant Professor	\$61,476	\$60,352	\$60,605	\$63,765	\$60,700	\$65,345	\$67,843		\$70,000	\$71,609	\$71,609	\$71,609	1	\$86,061	\$84,698
Instructor															
All	\$81,995	\$84,494	\$80,321	\$77,715	\$82,854	\$87,472	\$90,298	\$88,250	\$87,633	\$95,279	\$87,642	\$82,529	8	\$110,601	\$104,221
Index															
Professor	0.83	0.87	0.85	0.85	0.88	0.87	0.90	0.85	0.84	0.94	0.79	0.74			
Associate Professor	0.96	0.99	1.00	0.94	0.95	0.98	0.95	0.86	0.86	0.83	0.79	0.87			
Assistant Professor	1.01	0.94	0.91	0.97	0.89	0.88	0.88		0.86	0.85	0.83	0.85			
Instructor															
All	0.86	0.89	0.88	0.89	0.89	0.90	0.91	0.86	0.85	0.89	0.79	0.79			
FOOD SCIENCE AND HUMAN NUTRITION - AG ¹															
Average Salaries															
Professor	\$113,821	\$120,159	\$123,380	\$116,524	\$118,749	\$122,501	\$125,213	\$109,875	\$111,659	\$115,663	\$142,652	\$112,906	6	\$131,901	\$128,487
Associate Professor	\$80,883	\$78,843	\$78,843	\$81,517	\$82,739	\$84,926	\$87,012	\$89,129	\$88,253	\$90,284	\$92,357	\$88,130	6	\$94,560	\$100,705
Assistant Professor	\$73,214	\$74,523	\$74,523	\$73,000	\$73,422	\$72,446	\$75,052	\$77,151	\$77,313	\$81,470	\$86,731	\$87,309	3	\$87,770	\$84,600
Instructor															
All	\$98,029	\$98,575	\$98,402	\$100,304	\$97,059	\$101,039	\$101,650	\$92,170	\$92,446	\$97,015	\$111,350	\$97,876	15	\$108,139	\$108,597
Index															
Professor	1.09	1.15	1.16	1.10	1.06	1.05	1.05	0.93	0.90	0.91	1.08	0.88			
Associate Professor	1.08	1.05	1.05	1.04	1.01	1.02	1.05	1.04	1.06	0.99	0.98	0.88			
Assistant Professor	1.17	1.09	1.08	1.02	1.01	0.95	1.02	0.97	0.96	0.97	0.99	1.03			
Instructor															
All	1.09	1.12	1.11	1.08	1.04	1.03	1.05	0.98	0.99	0.95	1.03	0.90			

Iowa State University
Peer Land Grant Universities Faculty Salary Comparisons
2007-2008 through 2017-2018

COLLEGE/DEPARTMENT	2007-2008	2008-2009	2009-2010	2010-2011	2011-2012	2012-2013	2013-2014	2014-2015	2015-2016	2016-2017	2017-2018			PEER	
											AVERAGE SALARY & INDEX	MEDIAN SALARY & INDEX	COUNT	AVERAGE SALARY	MEDIAN SALARY
COLLEGE OF AGRICULTURE & LIFE SCIENCES, continued															
GENETICS, DEVELOPMENT, AND CELL BIOLOGY ¹															
Average Salaries															
Professor	\$136,689	\$139,402	\$124,984	\$125,484	\$121,717	\$126,329	\$134,607	\$128,741	\$127,861	\$132,267	\$134,195	\$131,347	7	\$146,868	\$146,678
Associate Professor	\$84,000	\$86,908	\$88,097	\$86,355	\$83,274	\$85,422	\$87,486	\$93,027	\$94,312	\$97,926	\$102,542	\$102,542	2	\$100,217	\$100,506
Assistant Professor	\$70,078	\$74,247	\$74,247	\$74,637		\$71,750	\$73,475	\$75,201	\$78,045	\$80,544	\$81,900	\$81,900	2	\$91,039	\$88,008
Instructor															
All	\$100,899	\$100,186	\$99,875	\$101,142	\$104,631	\$104,508	\$109,645	\$106,262	\$106,248	\$108,038	\$118,932	\$117,119	11	\$128,235	\$127,616
Index															
Professor	1.27	1.24	1.12	1.10	1.04	1.04	1.06	0.93	1.01	0.93	0.91	0.90			
Associate Professor	1.09	1.10	1.11	1.08	1.05	1.04	1.04	1.07	1.00	1.06	1.02	1.02			
Assistant Professor	1.07	1.10	1.10			0.95	0.93	0.90	0.90	0.97	0.90	0.93			
Instructor															
All	1.18	1.16	1.11	1.09	1.05	1.03	1.04	0.96	0.98	0.96	0.93	0.92			
HORTICULTURE															
Average Salaries															
Professor	\$84,720	\$90,498	\$90,667	\$89,279	\$93,078	\$95,676	\$98,642	\$104,828	\$105,876	\$112,161	\$109,775	\$99,117	7	\$117,868	\$121,928
Associate Professor	\$66,718	\$68,395	\$66,453	\$67,583	\$68,843	\$73,258	\$71,586	\$73,019	\$73,748	\$75,592	\$75,626	\$75,694	3	\$87,916	\$90,555
Assistant Professor	\$64,947		\$57,273	\$60,136	\$61,364	\$63,320	\$67,619	\$67,321	\$67,995	\$68,023	\$66,829	\$68,919	3	\$82,664	\$81,745
Instructor															
All	\$76,733	\$81,657	\$81,013	\$80,999	\$83,889	\$88,014	\$89,707	\$91,279	\$92,192	\$94,326	\$91,984	\$86,743	13	\$102,832	\$105,415
Index															
Professor	0.87	0.91	0.90	0.89	0.88	0.89	0.89	0.94	0.94	0.97	0.93	0.81			
Associate Professor	0.91	0.93	0.89	0.90	0.90	0.94	0.88	0.90	0.85	0.87	0.86	0.84			
Assistant Professor	1.02	0.00	0.87	0.92	0.90	0.93	0.90	0.90	0.85	0.85	0.81	0.84			
Instructor															
All	0.89	0.92	0.90	0.90	0.89	0.90	0.89	0.92	0.91	0.93	0.89	0.82			
NATURAL RESOURCE ECOLOGY AND MANAGEMENT															
Average Salaries															
Professor	\$98,085	\$97,013	\$94,967	\$90,870	\$91,905	\$95,265	\$96,342	\$99,469	\$104,077	\$108,571	\$109,385	\$104,177	7	\$127,875	\$132,534
Associate Professor	\$74,958	\$75,009	\$75,052	\$79,082	\$77,300	\$78,158	\$77,345	\$80,528	\$80,468	\$78,540	\$78,539	\$74,706	5	\$97,127	\$95,200
Assistant Professor	\$60,596	\$63,994	\$64,560	\$61,577	\$64,554	\$65,788	\$68,338	\$73,251	\$72,047	\$72,359	\$71,687	\$66,324	5	\$84,587	\$83,187
Instructor															
All	\$73,839	\$73,353	\$74,874	\$76,390	\$76,097	\$78,597	\$80,009	\$86,694	\$89,801	\$90,133	\$89,225	\$84,376	17	\$106,100	\$107,039
Index															
Professor	0.98	0.94	0.89	0.89	0.88	0.85	0.87	0.87	0.86	0.87	0.86	0.79			
Associate Professor	1.03	1.00	1.00	1.10	1.05	1.00	0.96	0.95	0.92	0.86	0.81	0.78			
Assistant Professor	0.99	1.02	1.01	0.95	0.87	0.93	0.94	0.96	0.91	0.87	0.85	0.80			
Instructor															
All	1.00	1.00	0.97	0.99	0.93	0.93	0.93	0.91	0.88	0.87	0.84	0.79			

Iowa State University
Peer Land Grant Universities Faculty Salary Comparisons
2007-2008 through 2017-2018

COLLEGE/DEPARTMENT	2007-2008	2008-2009	2009-2010	2010-2011	2011-2012	2012-2013	2013-2014	2014-2015	2015-2016	2016-2017	2017-2018			PEER	
											AVERAGE SALARY & INDEX	MEDIAN SALARY & INDEX	COUNT	AVERAGE SALARY	MEDIAN SALARY
COLLEGE OF AGRICULTURE AND LIFE SCIENCES, continued															
PLANT PATHOLOGY AND MICROBIOLOGY ⁷															
Average Salaries															
Professor	\$89,856	\$94,676	\$97,684	\$99,311	\$100,887	\$105,113	\$110,649	\$116,203	\$117,365	\$122,500	\$121,434	\$117,436	11	\$131,193	\$124,977
Associate Professor	\$83,881	\$86,956	\$83,830	\$84,171	\$75,131	\$73,744	\$75,588	\$78,125	\$77,227	\$86,938	\$96,637	\$97,707	3	\$96,870	\$94,908
Assistant Professor	\$62,733	\$64,662	\$64,662	\$62,846	\$63,248	\$71,284	\$73,066	\$78,947	\$81,775	\$85,527	\$86,438	\$85,918	4	\$83,724	\$82,986
Instructor															
All	\$83,277	\$87,119	\$88,029	\$91,914	\$93,705	\$97,117	\$101,726	\$104,406	\$105,675	\$106,302	\$109,525	\$107,144	18	\$114,924	\$110,634
Index															
Professor	0.95	0.94	0.96	1.03	0.98	0.95	0.97	0.94	0.95	0.97	0.93	0.94			
Associate Professor	1.16	1.16	1.17	1.20	1.03	0.96	0.92	0.91	0.89	0.96	1.00	1.03			
Assistant Professor	0.99	0.99	0.98	0.98	0.97	1.00	0.96	1.00	1.04	1.05	1.03	1.04			
Instructor															
All	1.00	1.00	1.01	1.05	0.99	0.96	0.96	0.94	0.96	0.99	0.95	0.97			
SOCIOLOGY¹															
Average Salaries															
Professor	\$89,959	\$93,425	\$92,738	\$94,175	\$89,466	\$97,318	\$99,348	\$96,660	\$101,764	\$101,273	\$114,365	\$114,801	3	\$140,506	\$131,466
Associate Professor	\$62,148	\$65,533	\$65,533			\$79,625	\$75,105	\$77,569	\$80,617	\$96,847	\$91,459	4	\$99,980	\$97,959	
Assistant Professor	\$55,636	\$59,296	\$59,296	\$62,174	\$65,033	\$67,080	\$67,823	\$63,429	\$66,042	\$71,474	\$69,637	\$69,637	1	\$80,519	\$81,999
Instructor															
All	\$78,662	\$80,244	\$77,264	\$83,508	\$81,322	\$85,979	\$87,126	\$84,821	\$89,194	\$90,131	\$100,015	\$97,485	8	\$112,745	\$108,529
Index															
Professor	0.78	0.81	0.76	0.78	0.73	0.75	0.77	0.76	0.74	0.72	0.81	0.87			
Associate Professor	0.81	0.84	0.83				0.91	0.85	0.83	0.84	0.97	0.93			
Assistant Professor	0.86	0.90	0.89	0.93	0.95	0.95	0.93	0.86	0.85	0.92	0.86	0.85			
Instructor															
All	0.79	0.83	0.80	0.81	0.78	0.80	0.82	0.79	0.77	0.77	0.89	0.90			
AGRICULTURE AND LIFE SCIENCES SUMMARY															
Average Salaries															
Professor	\$102,892	\$107,374	\$106,782	\$107,576	\$108,040	\$112,239	\$116,012	\$118,794	\$119,360	\$123,875	\$125,354	\$119,526	130	\$128,880	\$126,461
Associate Professor	\$76,628	\$81,030	\$80,520	\$81,565	\$80,468	\$83,626	\$86,293	\$87,010	\$88,895	\$90,978	\$93,458	\$92,939	61	\$97,834	\$97,289
Assistant Professor	\$65,978	\$69,989	\$70,545	\$72,899	\$74,854	\$77,262	\$80,228	\$82,229	\$81,577	\$83,223	\$85,200	\$83,581	50	\$87,644	\$86,671
Instructor															
All	\$90,342	\$93,853	\$94,169	\$96,129	\$96,628	\$100,117	\$103,038	\$104,219	\$104,254	\$107,079	\$108,950	\$105,339	241	\$112,467	\$110,822
Index															
Professor	1.01	1.02	1.01	1.05	1.02	1.00	0.99	0.96	0.94	0.95	0.97	0.95			
Associate Professor	1.04	1.07	1.06	1.09	1.07	1.07	1.02	0.99	0.99	0.95	0.96	0.96			
Assistant Professor	1.08	1.08	1.09	1.10	1.06	1.04	1.04	1.02	0.98	0.98	0.97	0.96			
Instructor															
All	1.02	1.04	1.03	1.06	1.03	1.02	1.00	0.97	0.95	0.96	0.97	0.95			

Iowa State University
Peer Land Grant Universities Faculty Salary Comparisons
2007-2008 through 2017-2018

COLLEGE/DEPARTMENT	2007-2008	2008-2009	2009-2010	2010-2011	2011-2012	2012-2013	2013-2014	2014-2015	2015-2016	2016-2017	2017-2018			PEER	
											AVERAGE SALARY & INDEX	MEDIAN SALARY & INDEX	COUNT	AVERAGE SALARY	MEDIAN SALARY
-COLLEGE OF BUSINESS-															
ACCOUNTING															
Average Salaries															
Professor	\$146,739	\$157,936	\$157,936	\$161,686	\$164,000	\$211,763	\$210,675	\$177,100	\$173,780	\$183,825	\$181,650	\$181,650	1	\$250,930	\$248,034
Associate Professor	\$119,712	\$129,034	\$131,803	\$137,295	\$147,823	\$150,916	\$156,612	\$160,842	\$162,263	\$166,646	\$171,762	\$168,400	6	\$204,487	\$224,932
Assistant Professor	\$108,100	\$118,111	\$129,125	\$131,250	\$138,068	\$143,953	\$147,838	\$155,694	\$157,251	\$170,186	\$165,238	\$165,576	5	\$207,506	\$214,775
Instructor													16		
All	\$116,891	\$125,981	\$133,205	\$137,318	\$143,588	\$155,132	\$159,322	\$158,925	\$160,951	\$170,870	\$72,800	\$72,140	28	\$89,835	\$95,411
Index															
Professor	0.81	0.84	0.84	0.89	0.89	1.00	0.98	0.80	0.65	0.75	0.72	0.73			
Associate Professor	0.86	0.90	0.88	0.90	0.95	0.89	0.91	0.88	0.82	0.85	0.84	0.75			
Assistant Professor	0.70	0.76	0.79	0.77	0.79	0.79	0.77	0.81	0.78	0.83	0.80	0.77			
Instructor															
All	0.78	0.82	0.84	0.84	0.84	0.84	0.84	0.83	0.76	0.82	0.81	0.76			
FINANCE															
Average Salaries															
Professor	\$148,708	\$160,212	\$159,962	\$162,712	\$157,637	\$168,932	\$171,556	\$168,650	\$170,337	\$176,146	\$176,070	\$175,920	3	\$263,427	\$277,373
Associate Professor	\$125,211	\$135,020	\$135,020	\$141,396	\$145,075	\$153,983	\$160,890	\$165,060	\$168,085	\$172,145	\$175,035	\$175,703	9	\$205,922	\$220,906
Assistant Professor	\$123,677	\$130,175	\$136,240	\$138,457	\$141,496	\$143,672	\$147,800	\$158,183	\$159,896	\$167,296	\$171,325	\$173,625	4	\$216,159	\$213,355
Instructor													16		
All	\$135,142	\$142,419	\$143,842	\$146,017	\$146,047	\$153,835	\$157,310	\$161,413	\$164,272	\$171,130	\$174,302	\$175,224	16	\$219,264	\$229,606
Index															
Professor	0.79	0.80	0.80	0.77	0.71	0.69	0.73	0.69	0.68	0.68	0.67	0.63			
Associate Professor	0.74	0.77	0.78	0.79	0.82	0.82	0.81	0.79	0.76	0.78	0.85	0.80			
Assistant Professor	0.83	0.83	0.83	0.78	0.78	0.76	0.78	0.79	0.78	0.79	0.79	0.81			
Instructor															
All	0.79	0.80	0.80	0.78	0.77	0.75	0.77	0.78	0.76	0.77	0.79	0.76			
MANAGEMENT															
Average Salaries															
Professor	\$145,563	\$155,876	\$156,685	\$159,714	\$162,325	\$163,055	\$159,152	\$166,974	\$173,978	\$182,739	\$185,349	\$185,469	3	\$243,067	\$261,757
Associate Professor	\$114,858	\$108,634	\$108,634	\$112,547	\$118,239	\$123,463	\$129,104	\$139,786	\$140,739	\$146,717	\$153,977	\$157,911	6	\$187,574	\$187,175
Assistant Professor	\$101,503	\$109,919	\$114,439	\$117,464	\$121,547	\$122,643	\$126,312	\$130,094	\$133,344	\$138,529	\$146,036	\$145,000	7	\$166,359	\$159,500
Instructor													16		
All	\$127,984	\$129,248	\$130,886	\$134,166	\$137,842	\$143,142	\$137,705	\$143,078	\$145,749	\$151,738	\$156,385	\$157,430	16	\$188,697	\$189,051
Index															
Professor	0.91	0.93	0.87	0.92	0.88	0.80	0.77	0.77	0.74	0.77	0.76	0.71			
Associate Professor	0.90	0.82	0.79	0.84	0.87	0.81	0.81	0.81	0.80	0.82	0.82	0.84			
Assistant Professor	0.88	0.92	0.90	0.92	0.92	0.87	0.88	0.87	0.85	0.87	0.88	0.91			
Instructor															
All	0.90	0.90	0.86	0.90	0.88	0.81	0.81	0.82	0.80	0.82	0.83	0.83			

Iowa State University
Peer Land Grant Universities Faculty Salary Comparisons
2007-2008 through 2017-2018

COLLEGE/DEPARTMENT	2007-2008	2008-2009	2009-2010	2010-2011	2011-2012	2012-2013	2013-2014	2014-2015	2015-2016	2016-2017	2017-2018			PEER	
											AVERAGE SALARY & INDEX	MEDIAN SALARY & INDEX	COUNT	AVERAGE SALARY	MEDIAN SALARY
COLLEGE OF BUSINESS, continued															
MARKETING															
Average Salaries															
Professor	\$145,086	\$150,824	\$159,368	\$161,793	\$155,524	\$163,287	\$167,853	\$172,513	\$175,321	\$181,936	\$196,152	\$200,000	3	\$227,939	\$238,607
Associate Professor	\$118,220	\$128,029	\$128,029	\$129,729	\$133,679	\$136,218	\$139,769	\$143,937	\$145,376	\$158,712	\$157,387	\$162,660	4	\$183,865	\$190,316
Assistant Professor	\$110,373	\$116,471	\$117,476	\$119,192	\$123,671	\$123,020	\$128,683	\$136,473	\$140,808	\$149,726	\$153,703	\$152,445	6	\$163,718	\$164,825
Instructor															
All	\$124,423	\$129,089	\$133,199	\$135,149	\$134,178	\$140,062	\$144,942	\$148,710	\$152,130	\$162,709	\$164,632	\$166,562	13	\$184,738	\$189,695
Index															
Professor	0.82	0.85	0.86	0.93	0.85	0.83	0.84	0.81	0.78	0.83	0.86	0.84			
Associate Professor	0.99	1.03	0.99	1.07	1.09	0.97	0.90	0.82	0.83	0.93	0.86	0.85			
Assistant Professor	0.89	0.93	0.91	0.94	0.93	0.86	0.84	0.90	0.88	0.95	0.94	0.92			
Instructor															
All	0.87	0.92	0.90	0.96	0.93	0.87	0.85	0.85	0.84	0.90	0.89	0.88			
SUPPLY CHAIN & INFORMATION MANAGEMENT ⁵															
Average Salaries															
Professor	\$141,582	\$144,614	\$147,068	\$153,257	\$188,024	\$199,188	\$183,028	\$170,794	\$175,238	\$190,171	\$207,136	\$202,853	5	\$213,756	\$228,230
Associate Professor	\$117,455	\$124,859	\$123,690	\$124,406	\$126,560	\$133,070	\$136,589	\$136,299	\$143,911	\$148,987	\$153,080	\$154,067	15	\$152,904	\$174,321
Assistant Professor	\$107,430	\$112,601	\$108,800	\$112,100	\$115,677	\$118,975	\$121,123	\$127,444	\$131,272	\$134,356	\$133,904	\$134,500	6	\$145,829	\$155,261
Instructor															
All	\$119,354	\$125,041	\$124,277	\$124,429	\$129,157	\$131,262	\$139,851	\$141,231	\$146,734	\$154,045	\$159,050	\$158,933	26	\$162,974	\$180,289
Index															
Professor	0.86	0.85	0.87	0.89	1.07	1.04	0.86	0.85	0.84	0.90	0.97	0.89			
Associate Professor	0.96	1.01	0.92	0.97	0.96	1.04	0.92	1.00	1.02	1.02	1.00	0.88			
Assistant Professor	0.88	1.05	0.84	0.88	0.89	0.94	0.83	0.94	0.95	0.93	0.92	0.87			
Instructor															
All	0.92	0.99	0.90	0.92	0.95	1.00	0.89	0.94	0.96	0.97	0.98	0.88			
BUSINESS SUMMARY															
Average Salaries															
Professor	\$145,558	\$154,734	\$156,476	\$159,876	\$163,565	\$171,832	\$174,570	\$170,611	\$174,160	\$183,772	\$192,670	\$192,006	15	\$234,867	\$248,159
Associate Professor	\$118,235	\$124,559	\$124,887	\$127,536	\$130,740	\$137,047	\$141,728	\$145,892	\$149,744	\$157,085	\$161,387	\$162,521	40	\$180,867	\$195,922
Assistant Professor	\$110,322	\$117,691	\$121,544	\$123,711	\$128,803	\$132,787	\$136,943	\$144,912	\$147,268	\$154,718	\$152,121	\$152,109	28	\$175,856	\$177,297
Instructor															
All	\$123,926	\$129,909	\$132,226	\$134,626	\$137,349	\$144,126	\$147,389	\$150,190	\$153,424	\$161,459	\$163,915	\$164,337	83	\$188,936	\$199,079
Index															
Professor	0.84	0.86	0.85	0.87	0.86	0.81	0.82	0.79	0.75	0.80	0.82	0.77			
Associate Professor	0.91	0.92	0.88	0.91	0.93	0.92	0.87	0.88	0.87	0.88	0.89	0.83			
Assistant Professor	0.82	0.87	0.85	0.85	0.84	0.82	0.80	0.84	0.83	0.86	0.87	0.86			
Instructor															
All	0.86	0.88	0.86	0.87	0.87	0.85	0.83	0.84	0.83	0.85	0.87	0.83			

**Iowa State University
Peer Land Grant Universities Faculty Salary Comparisons
2007-2008 through 2017-2018**

COLLEGE/DEPARTMENT	2007-2008	2008-2009	2009-2010	2010-2011	2011-2012	2012-2013	2013-2014	2014-2015	2015-2016	2016-2017	2017-2018			PEER	
											AVERAGE SALARY & INDEX	MEDIAN SALARY & INDEX	COUNT	AVERAGE SALARY	MEDIAN SALARY
-COLLEGE OF DESIGN-															
ARCHITECTURE															
Average Salaries															
Professor	\$89,123	\$96,495	\$95,371	\$96,896	\$96,476	\$99,031	\$103,488	\$107,593	\$107,450	\$108,808	\$107,000	\$114,938	5	\$122,300	\$117,846
Associate Professor	\$72,539	\$78,011	\$77,550	\$79,090	\$77,451	\$79,533	\$83,540	\$84,550	\$84,088	\$86,112	\$87,264	\$86,294	4	\$87,095	\$86,412
Assistant Professor	\$57,998	\$62,346	\$60,724	\$61,951	\$65,305	\$67,016	\$67,008	\$67,510	\$68,126	\$70,266	\$70,170	\$69,770	9	\$71,794	\$72,757
Instructor															
All	\$73,072	\$79,428	\$79,396	\$79,272	\$83,182	\$83,648	\$87,040	\$88,655	\$88,372	\$89,634	\$84,199	\$85,989	18	\$89,224	\$88,316
Index															
Professor	0.88	0.92	0.87	0.94	0.93	0.86	0.90	0.92	0.87	0.88	0.87	0.98			
Associate Professor	0.94	0.99	0.97	1.03	1.01	0.99	1.00	1.01	1.00	0.99	1.00	1.00			
Assistant Professor	0.99	1.04	0.98	1.01	1.02	0.97	0.97	0.98	0.94	0.96	0.98	0.96			
Instructor															
All	0.93	0.97	0.93	1.00	0.97	0.93	0.96	0.96	0.92	0.92	0.94	0.97			
COMMUNITY AND REGIONAL PLANNING															
Average Salaries															
Professor	\$116,278	\$118,778	\$118,778	\$118,778	\$118,778	\$91,088	\$97,588	\$101,053	\$109,552	\$113,538	\$113,538	\$113,538	2	\$119,778	\$120,381
Associate Professor	\$74,253	\$77,227	\$74,083	\$74,640	\$76,946	\$76,346	\$81,787	\$85,765	\$88,743	\$91,546	\$94,772	\$100,582	3	\$86,112	\$88,389
Assistant Professor	\$66,291	\$58,847	\$58,366	\$63,179	\$60,149	\$62,268	\$65,799	\$65,283	\$65,080	\$67,308	\$66,433	\$66,702	5	\$75,145	\$76,250
Instructor															
All	\$73,678	\$70,354	\$70,694	\$74,450	\$74,410	\$71,801	\$77,743	\$81,906	\$79,619	\$82,324	\$84,356	\$86,233	10	\$87,362	\$88,718
Index															
Professor	1.10	1.06	1.10	1.16	1.16	0.81	0.84	0.88	0.87	0.94	0.95	0.94			
Associate Professor	1.00	1.02	0.95	1.05	1.06	0.96	1.01	1.06	1.06	1.04	1.10	1.14			
Assistant Professor	1.08	0.93	0.89	1.00	0.99	0.95	0.98	0.95	0.93	0.91	0.88	0.87			
Instructor															
All	1.06	0.98	0.95	1.05	1.05	0.91	0.94	0.97	0.95	0.95	0.97	0.97			
GRAPHIC DESIGN, INDUSTRIAL DESIGN, INTERIOR DESIGN & ART AND VISUAL CULTURE ⁸															
Average Salaries															
Professor	\$72,397	\$91,925	\$86,444	\$83,607	\$ 84,792	\$93,271	\$89,949	\$88,578	\$92,684	\$84,553	\$86,971	\$85,077	9	\$113,652	\$104,205
Associate Professor	\$61,069	\$62,411	\$61,886	\$62,707	\$ 63,279	\$65,040	\$67,765	\$73,156	\$73,670	\$74,008	\$77,245	\$70,115	20	\$83,164	\$80,673
Assistant Professor	\$53,389	\$56,662	\$53,792	\$55,298	\$ 55,934	\$57,739	\$59,660	\$61,229	\$60,852	\$63,106	\$64,504	\$63,569	15	\$71,334	\$69,663
Instructor															
All	\$60,038	\$63,324	\$63,185	\$63,444	\$64,774	\$67,223	\$69,404	\$72,338	\$72,778	\$72,508	\$74,891	\$70,944	44	\$85,367	\$81,733
Index															
Professor	0.82	1.03	0.98	0.93	0.94	0.99	0.93	0.84	0.96	0.81	0.77	0.82			
Associate Professor	0.92	0.93	0.90	0.89	0.87	0.87	0.89	0.92	0.96	0.93	0.93	0.87			
Assistant Professor	0.95	1.02	0.97	0.96	0.92	0.94	0.96	0.91	0.95	0.92	0.90	0.91			
Instructor															
All	0.92	0.96	0.93	0.91	0.89	0.89	0.91	0.90	0.96	0.89	0.88	0.87			

Iowa State University
Peer Land Grant Universities Faculty Salary Comparisons
2007-2008 through 2017-2018

COLLEGE/DEPARTMENT	2007-2008	2008-2009	2009-2010	2010-2011	2011-2012	2012-2013	2013-2014	2014-2015	2015-2016	2016-2017	2017-2018			PEER	
											AVERAGE SALARY & INDEX	MEDIAN SALARY & INDEX	COUNT	AVERAGE SALARY	MEDIAN SALARY
COLLEGE OF DESIGN, continued															
LANDSCAPE ARCHITECTURE															
Average Salaries															
Professor	\$92,755	\$97,056	\$97,983	\$97,056	\$101,993	\$113,739	\$102,438	\$93,638	\$101,954	\$97,819	\$100,193	\$99,894	3	\$113,081	\$116,955
Associate Professor	\$76,023	\$79,356	\$73,991	\$77,415	\$78,438	\$80,255	\$83,394	\$87,715	\$88,142	\$94,258	\$92,807	\$92,367	5	\$86,884	\$86,632
Assistant Professor	\$54,343	\$54,928		\$58,000	\$61,015	\$62,117	\$64,407	\$64,425	\$64,726	\$67,086	\$66,706	\$66,374	3	\$72,496	\$72,530
Instructor															
All	\$75,804	\$80,527	\$82,715	\$84,578	\$79,801	\$79,747	\$79,952	\$77,667	\$83,790	\$85,348	\$87,703	\$87,331	11	\$90,105	\$91,056
Index															
Professor	0.92	0.95	0.97	0.92	0.99	1.06	0.92	0.87	0.96	0.91	0.89	0.85			
Associate Professor	0.99	1.06	1.03	1.03	1.08	1.00	1.01	1.10	1.09	1.14	1.07	1.07			
Assistant Professor	0.97	0.91		0.95	1.02	0.91	0.94	0.89	0.92	0.93	0.92	0.92			
Instructor															
All	0.96	0.98	1.00	0.96	1.04	0.99	0.97	0.99	1.00	1.00	0.97	0.96			
DESIGN SUMMARY															
Average Salaries															
Professor	\$87,774	\$97,254	\$95,255	\$94,991	\$95,519	\$98,397	\$98,388	\$98,696	\$101,522	\$97,722	\$97,126	\$98,271	19	\$116,483	\$111,511
Associate Professor	\$66,795	\$70,127	\$68,795	\$69,835	\$69,776	\$70,706	\$73,764	\$77,866	\$78,819	\$80,075	\$82,572	\$78,471	32	\$84,513	\$83,045
Assistant Professor	\$57,422	\$58,176	\$57,176	\$59,200	\$59,454	\$62,032	\$63,712	\$63,761	\$63,720	\$66,000	\$66,605	\$66,065	32	\$72,168	\$71,831
Instructor															
All	\$67,766	\$71,628	\$71,806	\$72,507	\$72,962	\$74,117	\$76,495	\$77,966	\$78,998	\$79,464	\$79,748	\$78,220	83	\$87,072	\$85,238
Index															
Professor	0.90	0.96	0.93	0.95	0.96	0.91	0.91	0.88	0.91	0.86	0.83	0.88			
Associate Professor	0.94	0.97	0.95	0.96	0.95	0.92	0.94	0.97	0.99	0.98	0.98	0.94			
Assistant Professor	0.99	0.98	0.95	0.98	0.98	0.94	0.96	0.93	0.94	0.93	0.92	0.92			
Instructor															
All	0.94	0.97	0.94	0.96	0.95	0.92	0.93	0.93	0.95	0.92	0.92	0.92			

Iowa State University
Peer Land Grant Universities Faculty Salary Comparisons
2007-2008 through 2017-2018

COLLEGE/DEPARTMENT	2007-2008	2008-2009	2009-2010	2010-2011	2011-2012	2012-2013	2013-2014	2014-2015	2015-2016	2016-2017	2017-2018			PEER	
											AVERAGE SALARY & INDEX	MEDIAN SALARY & INDEX	COUNT	AVERAGE SALARY	MEDIAN SALARY
-COLLEGE OF ENGINEERING-															
AEROSPACE ENGINEERING															
Average Salaries															
Professor	\$123,510	\$128,855	\$128,372	\$130,545	\$136,308	\$143,329	\$145,075	\$155,837	\$153,369	\$161,220	\$156,392	\$151,040	11	\$164,584	\$168,473
Associate Professor	\$93,167	\$93,188	\$91,792	\$96,090	\$92,113	\$95,361	\$95,415	\$97,552	\$98,370	\$103,490	\$103,490	\$105,280	6	\$115,690	\$114,205
Assistant Professor	\$73,823	\$82,794	\$80,704	\$81,704	\$85,019	\$85,657	\$87,522	\$89,611	\$89,113	\$93,075	\$93,563	\$95,446	7	\$98,013	\$98,019
Instructor															
All	\$103,110	\$109,022	\$107,627	\$112,083	\$119,270	\$119,853	\$123,089	\$127,104	\$123,021	\$125,676	\$124,841	\$123,385	24	\$132,944	\$134,357
Index															
Professor	0.98	1.01	0.98	1.00	1.02	1.01	0.99	1.00	1.00	1.01	0.95	0.90			
Associate Professor	1.02	1.00	0.96	1.07	0.98	0.98	0.94	0.93	0.91	0.92	0.89	0.92			
Assistant Professor	0.92	1.03	0.99	1.00	1.03	0.98	1.01	0.95	0.97	0.98	0.95	0.97			
Instructor															
All	0.98	1.01	0.98	1.02	1.02	1.00	0.99	0.98	0.98	0.99	0.94	0.92			
AGRICULTURAL AND BIOSYSTEMS ENGINEERING ¹															
Average Salaries															
Professor			\$113,927	\$113,927	\$150,000	\$153,750	\$168,364	\$136,185	\$136,513	\$142,246	\$200,000	\$200,000	1	\$141,547	\$130,249
Associate Professor	\$87,409	\$109,927						\$95,349	\$96,570	\$99,846	\$105,330	\$105,330	1	\$107,890	\$104,932
Assistant Professor	\$73,000	\$75,742	\$76,660	\$85,000	\$88,000	\$90,640	\$93,586	\$84,334	\$83,418	\$85,696	\$87,055	\$87,739	3	\$89,083	\$86,806
Instructor															
All	\$80,205	\$87,137	\$95,294	\$99,464	\$119,000	\$122,195	\$130,975	\$113,379	\$112,208	\$117,875	\$113,299	\$113,709	5	\$103,337	\$99,120
Index															
Professor			1.03	1.06	1.31	1.27	1.35	1.04	1.05	1.02	1.41	1.54			
Associate Professor	1.08	1.28						1.01	1.00	0.96	0.98	1.00			
Assistant Professor	1.04	1.03	1.03	1.18	1.18	1.16	1.13	0.99	0.97	1.00	0.98	1.01			
Instructor															
All	1.06	1.12	1.03	1.11	1.26	1.22	1.26	1.02	1.02	1.00	1.10	1.15			
CHEMICAL & BIOLOGICAL ENGINEERING															
Average Salaries															
Professor	\$130,026	\$141,721	\$142,195	\$151,916	\$151,873	\$152,315	\$165,773	\$175,583	\$172,591	\$179,318	\$180,339	\$202,471	8	\$174,617	\$164,293
Associate Professor	\$101,512	\$104,684	\$104,684	\$99,735	\$101,235	\$103,256	\$104,996	\$109,493	\$110,516	\$112,493	\$111,195	\$110,695	7	\$112,656	\$116,527
Assistant Professor	\$84,862	\$85,864	\$85,220	\$86,715	\$88,295	\$90,401	\$90,720	\$91,834	\$92,202	\$94,002	\$94,002	\$94,082	5	\$97,968	\$96,975
Instructor															
All	\$117,191	\$119,636	\$116,141	\$125,018	\$127,216	\$126,835	\$137,388	\$134,942	\$135,100	\$137,942	\$134,555	\$143,252	20	\$133,768	\$130,745
Index															
Professor	0.96	1.01	1.00	1.05	1.04	1.01	1.09	1.10	1.05	1.05	1.03	1.23			
Associate Professor	1.10	1.16	1.12	1.05	1.03	1.03	1.05	1.06	1.04	1.03	0.99	0.95			
Assistant Professor	1.07	1.04	1.05	1.08	1.07	1.04	1.03	1.01	0.98	0.96	0.96	0.97			
Instructor															
All	0.99	1.03	1.03	1.06	1.05	1.02	1.07	1.07	1.03	1.03	1.01	1.10			

Iowa State University
Peer Land Grant Universities Faculty Salary Comparisons
2007-2008 through 2017-2018

COLLEGE/DEPARTMENT	2007-2008	2008-2009	2009-2010	2010-2011	2011-2012	2012-2013	2013-2014	2014-2015	2015-2016	2016-2017	2017-2018			PEER	
											AVERAGE SALARY & INDEX	MEDIAN SALARY & INDEX	COUNT	AVERAGE SALARY	MEDIAN SALARY
COLLEGE OF ENGINEERING, continued															
CIVIL, CONSTRUCTION, AND ENVIRONMENTAL ENGINEERING															
Average Salaries															
Professor	\$124,600	\$130,849	\$127,681	\$128,931	\$133,183	\$132,312	\$137,645	\$144,367	\$142,072	\$152,861	\$154,802	\$146,702	10	\$144,229	\$144,880
Associate Professor	\$85,723	\$93,127	\$94,421	\$94,760	\$97,779	\$95,554	\$98,780	\$102,652	\$103,751	\$106,768	\$108,768	\$109,591	11	\$109,272	\$107,859
Assistant Professor	\$74,515	\$79,387	\$79,415	\$85,325	\$85,411	\$86,220	\$87,202	\$89,270	\$89,727	\$91,991	\$91,923	\$91,274	14	\$94,573	\$93,550
Instructor															
All	\$98,659	\$105,070	\$104,808	\$108,057	\$113,103	\$114,247	\$118,656	\$119,443	\$115,759	\$118,833	\$115,182	\$112,867	35	\$113,380	\$112,713
Index															
Professor	1.01	1.07	1.03	1.04	1.04	0.99	1.03	1.07	1.04	1.08	1.07	1.01			
Associate Professor	0.95	1.01	1.03	1.05	1.03	0.98	1.00	1.01	1.01	1.01	1.00	1.02			
Assistant Professor	0.95	0.99	1.00	1.08	1.01	1.00	0.99	1.00	1.00	1.00	0.97	0.98			
Instructor															
All	0.98	1.04	1.03	1.05	1.03	0.99	1.01	1.04	1.02	1.04	1.02	1.00			
ELECTRICAL AND COMPUTER ENGINEERING															
Average Salaries															
Professor	\$134,331	\$145,318	\$141,114	\$146,026	\$145,807	\$148,645	\$146,477	\$149,300	\$147,195	\$149,134	\$150,551	\$144,970	24	\$164,134	\$164,679
Associate Professor	\$100,463	\$102,407	\$102,248	\$102,931	\$102,149	\$100,862	\$102,491	\$106,321	\$103,723	\$104,927	\$106,361	\$104,272	17	\$115,217	\$115,562
Assistant Professor	\$84,363	\$84,339	\$84,187	\$86,400	\$86,065	\$87,057	\$87,211	\$83,870	\$83,383	\$85,837	\$91,000	\$90,500	6	\$99,246	\$99,276
Instructor															
All	\$104,133	\$107,885	\$104,630	\$109,652	\$110,370	\$115,091	\$116,726	\$121,906	\$119,468	\$124,629	\$126,965	\$123,296	47	\$138,157	\$138,564
Index															
Professor	1.02	1.08	1.05	1.06	1.04	1.02	0.99	1.01	0.94	0.93	0.92	0.88			
Associate Professor	1.03	1.04	1.05	1.05	1.02	0.98	0.97	0.97	0.93	0.92	0.92	0.90			
Assistant Professor	0.98	0.97	0.96	1.00	0.98	0.94	0.96	0.90	0.89	0.88	0.92	0.91			
Instructor															
All	1.01	1.03	1.02	1.04	1.01	0.99	0.97	0.99	0.93	0.93	0.92	0.89			
INDUSTRIAL AND MANUFACTURING SYSTEMS ENGINEERING															
Average Salaries															
Professor	\$119,693	\$136,139	\$120,927	\$124,027	\$132,242	\$130,276	\$133,364	\$141,836	\$137,340	\$171,295	\$181,763	\$200,000	3	\$164,955	\$167,407
Associate Professor	\$91,763	\$94,500	\$93,676	\$95,434	\$97,209	\$104,403	\$104,767	\$106,062	\$108,167	\$112,003	\$113,101	\$113,198	10	\$115,315	\$114,040
Assistant Professor	\$76,832	\$76,311	\$71,799	\$73,602	\$74,468	\$84,797	\$89,229	\$91,727	\$91,035	\$96,550	\$97,853	\$87,550	3	\$99,309	\$96,996
Instructor															
All	\$94,126	\$100,363	\$96,843	\$98,944	\$100,046	\$105,970	\$109,003	\$109,186	\$104,401	\$115,551	\$123,116	\$124,664	16	\$121,621	\$120,851
Index															
Professor	0.92	1.01	0.87	0.91	0.94	0.89	0.91	0.93	0.91	1.07	1.10	1.19			
Associate Professor	0.96	0.96	0.93	0.96	0.96	0.97	0.95	0.97	0.96	0.96	0.98	0.99			
Assistant Professor	0.94	0.95	0.85	0.90	0.90	0.96	1.00	1.03	1.00	1.01	0.99	0.90			
Instructor															
All	0.95	0.98	0.90	0.93	0.94	0.94	0.94	0.97	0.96	0.99	1.01	1.03			

Iowa State University
Peer Land Grant Universities Faculty Salary Comparisons
2007-2008 through 2017-2018

COLLEGE/DEPARTMENT											2017-2018			PEER	
											AVERAGE SALARY & INDEX	MEDIAN SALARY & INDEX	COUNT	AVERAGE SALARY	MEDIAN SALARY
	2007-2008	2008-2009	2009-2010	2010-2011	2011-2012	2012-2013	2013-2014	2014-2015	2015-2016	2016-2017					
COLLEGE OF ENGINEERING, continued															
MATERIALS SCIENCE AND ENGINEERING															
Average Salaries															
Professor	\$134,075	\$145,397	\$152,402	\$158,391	\$161,125	\$158,689	\$161,430	\$170,822	\$177,216	\$184,654	\$195,047	\$222,841	10	\$173,990	\$161,111
Associate Professor	\$95,934	\$98,336	\$97,461	\$101,041	\$96,289	\$99,424		\$97,556	\$119,850	\$124,289	\$125,761	\$125,761	2	\$115,244	\$113,130
Assistant Professor	\$79,055	\$81,141	\$82,121	\$80,000	\$84,325	\$86,708	\$88,918	\$92,975	\$93,905	\$94,448	\$93,655	\$93,000	5	\$95,063	\$92,730
Instructor															
All	\$117,873	\$127,561	\$126,847	\$134,399	\$138,183	\$136,815	\$149,345	\$155,481	\$158,023	\$154,565	\$157,075	\$173,232	17	\$143,865	\$135,354
Index															
Professor	0.99	1.04	1.07	1.10	1.10	1.04	1.06	1.12	1.19	1.12	1.12	1.38			
Associate Professor	1.06	1.03	1.01	1.05	0.96	0.98	#DIV/0!	0.93	1.10	1.11	1.09	1.11			
Assistant Professor	1.02	1.02	1.00	0.99	1.01	0.97	1.00	1.01	1.03	1.01	0.99	1.00			
Instructor															
All	1.00	1.03	1.05	1.08	1.07	1.02	1.05	1.10	1.16	1.10	1.09	1.28			
MECHANICAL ENGINEERING															
Average Salaries															
Professor	\$133,122	\$133,679	\$142,622	\$149,068	\$155,945	\$155,491	\$165,427	\$171,872	\$157,583	\$156,464	\$156,464	\$149,910	13	\$156,878	\$161,115
Associate Professor	\$94,703	\$99,508	\$98,090	\$100,812	\$99,916	\$101,144	\$103,164	\$104,941	\$102,248	\$102,808	\$103,677	\$103,327	5	\$113,312	\$114,839
Assistant Professor	\$77,493	\$83,085	\$82,095	\$84,598	\$85,637	\$85,965	\$87,034	\$85,691	\$85,906	\$88,196	\$88,144	\$86,345	21	\$97,778	\$95,802
Instructor															
All	\$106,041	\$107,373	\$108,853	\$111,065	\$112,286	\$115,082	\$114,962	\$118,131	\$112,470	\$113,200	\$112,909	\$109,711	39	\$119,470	\$120,013
Index															
Professor	1.04	1.01	1.08	1.13	1.16	1.10	1.14	1.16	1.03	1.02	1.00	0.93			
Associate Professor	1.03	1.05	1.04	1.08	1.06	1.01	1.03	1.01	0.95	0.93	0.91	0.90			
Assistant Professor	0.98	1.02	1.01	1.03	1.02	0.98	0.98	0.94	0.92	0.92	0.90	0.90			
Instructor															
All	1.02	1.03	1.05	1.09	1.09	1.04	1.06	1.05	0.97	0.96	0.95	0.91			
ENGINEERING SUMMARY															
Average Salaries															
Professor	\$129,810	\$137,955	\$137,806	\$142,435	\$145,700	\$146,666	\$151,319	\$156,053	\$153,900	\$159,641	\$163,176	\$165,059	80	\$162,558	\$161,334
Associate Professor	\$93,416	\$97,645	\$97,089	\$98,912	\$98,950	\$100,191	\$101,991	\$103,693	\$103,571	\$106,442	\$108,646	\$108,307	59	\$113,585	\$113,520
Assistant Professor	\$79,559	\$82,570	\$82,369	\$84,784	\$85,231	\$86,748	\$87,989	\$88,111	\$87,905	\$90,714	\$91,124	\$90,054	64	\$96,707	\$95,363
Instructor															
All	\$105,334	\$110,200	\$108,656	\$113,424	\$116,186	\$118,111	\$122,161	\$123,663	\$120,715	\$124,570	\$124,611	\$124,918	203	\$127,563	\$126,639
Index															
Professor	1.00	1.04	1.03	1.05	1.06	1.02	1.04	1.06	1.04	1.03	1.00	1.02			
Associate Professor	1.01	1.03	1.02	1.05	1.01	0.99	0.98	0.99	0.97	0.96	0.96	0.95			
Assistant Professor	0.97	1.00	0.99	1.02	1.00	0.98	0.99	0.97	0.96	0.96	0.94	0.94			
Instructor															
All	1.00	1.03	1.02	1.05	1.04	1.01	1.02	1.03	1.00	1.00	0.98	0.99			

**Iowa State University
Peer Land Grant Universities Faculty Salary Comparisons
2007-2008 through 2017-2018**

COLLEGE/DEPARTMENT	2007-2008	2008-2009	2009-2010	2010-2011	2011-2012	2012-2013	2013-2014	2014-2015	2015-2016	2016-2017	2017-2018			PEER	
											AVERAGE SALARY & INDEX	MEDIAN SALARY & INDEX	COUNT	AVERAGE SALARY	MEDIAN SALARY
-COLLEGE OF HUMAN SCIENCES-															
APPAREL, EVENTS, AND HOSPITALITY MANAGEMENT ⁹															
Average Salaries															
Professor	\$87,829	\$98,237	\$99,486	\$106,818	\$111,256	\$116,265	\$120,765	\$125,508	\$121,506	\$118,655	\$135,244	\$122,377	6	\$149,612	\$164,019
Associate Professor	\$71,453	\$77,596	\$72,894	\$74,991	\$72,251	\$74,647	\$80,605	\$85,672	\$85,016	\$83,029	\$87,977	\$85,320	8	\$102,090	\$105,465
Assistant Professor	\$55,170	\$57,881	\$62,069	\$63,028	\$65,645	\$66,797	\$68,036	\$70,872	\$70,883	\$73,614	\$73,872	\$73,413	11	\$88,992	\$84,267
Instructor															
All	\$68,219	\$71,867	\$72,188	\$75,443	\$77,249	\$80,444	\$82,231	\$86,188	\$87,318	\$85,535	\$93,115	\$88,975	25	\$107,732	\$110,191
Index															
Professor	0.82	0.88	0.90	0.94	0.96	1.01	1.02	0.98	0.90	0.84	0.90	0.75			
Associate Professor	0.93	1.01	0.92	0.95	0.85	0.85	0.88	0.96	0.95	0.84	0.86	0.81			
Assistant Professor	0.91	0.92	0.93	0.92	0.91	0.90	0.84	0.93	0.88	0.87	0.83	0.87			
Instructor															
All	0.88	0.93	0.92	0.93	0.91	0.92	0.90	0.95	0.91	0.85	0.86	0.81			
CURRICULUM AND INSTRUCTION ¹⁰															
Average Salaries															
Professor	\$86,263	\$91,510	\$92,026	\$98,057	\$96,767										
Associate Professor	\$62,566	\$67,027	\$68,365	\$68,593	\$71,626										
Assistant Professor	\$55,274	\$58,510	\$58,258	\$58,606	\$62,773										
Instructor															
All	\$65,230	\$70,811	\$73,958	\$74,359	\$73,266										
Index															
Professor	0.88	0.89	0.89	0.99	0.93										
Associate Professor	0.85	0.89	0.90	0.94	0.96										
Assistant Professor	0.92	0.95	0.94	0.97	1.00										
Instructor															
All	0.88	0.91	0.90	0.96	0.96										
EDUCATIONAL LEADERSHIP AND POLICY STUDIES ¹⁰															
Average Salaries															
Professor	\$106,751	\$112,176	\$114,676	\$107,770	\$110,800										
Associate Professor	\$73,785	\$80,404	\$77,323	\$78,611	\$93,210										
Assistant Professor	\$59,471	\$61,303	\$60,496	\$58,142	\$65,000										
Instructor															
All	\$85,352	\$89,737	\$89,250	\$83,452	\$86,146										
Index															
Professor	0.96	0.97	0.97	0.93	0.99										
Associate Professor	0.96	1.01	0.96	0.99	1.17										
Assistant Professor	0.97	0.96	0.94	0.91	1.02										
Instructor															
All	0.96	0.98	0.96	0.94	1.05										

Iowa State University
Peer Land Grant Universities Faculty Salary Comparisons
2007-2008 through 2017-2018

COLLEGE/DEPARTMENT	2007-2008	2008-2009	2009-2010	2010-2011	2011-2012	2012-2013	2013-2014	2014-2015	2015-2016	2016-2017	2017-2018			PEER	
											AVERAGE SALARY & INDEX	MEDIAN SALARY & INDEX	COUNT	AVERAGE SALARY	MEDIAN SALARY
COLLEGE OF HUMAN SCIENCES, continued															
FOOD SCIENCE AND HUMAN NUTRITION --H SCI¹															
Average Salaries															
Professor	\$93,340	\$92,751	\$91,501	\$93,704	\$95,355	\$96,023	\$95,650	\$109,875	\$111,659	\$115,663	\$108,103	\$107,509	5	\$131,901	\$128,487
Associate Professor	\$72,820	\$72,432	\$76,241	\$76,786	\$80,486	\$82,492	\$85,833	\$89,129	\$88,253	\$90,284	\$92,740	\$94,656	7	\$94,560	\$100,705
Assistant Professor	\$65,971	\$69,867	\$69,419	\$71,956	\$66,900	\$73,817	\$75,625	\$77,151	\$77,313	\$81,470	\$82,048	\$82,484	4	\$87,770	\$84,600
Instructor															
All	\$77,026	\$78,350	\$78,036	\$80,239	\$81,939	\$84,653	\$85,735	\$92,170	\$92,446	\$97,015	\$94,868	\$95,630	16	\$104,532	\$105,361
Index															
Professor	0.90	0.89	0.86	0.88	0.85	0.82	0.81	0.93	0.90	0.91	0.82	0.84			
Associate Professor	0.98	0.96	1.02	0.97	0.98	0.99	1.03	1.04	1.06	0.99	0.98	0.94			
Assistant Professor	1.05	1.02	1.00	1.00	0.92	0.97	1.03	0.97	0.96	0.97	0.93	0.97			
Instructor															
All	0.96	0.95	0.96	0.95	0.93	0.92	0.96	0.98	0.99	0.95	0.91	0.91			
HUMAN DEVELOPMENT AND FAMILY STUDIES															
Average Salaries															
Professor	\$98,042	\$101,107	\$100,166	\$109,786	\$119,626	\$118,451	\$121,293	\$124,848	\$130,293	\$131,636	\$127,859	\$129,957	6	\$137,322	\$126,256
Associate Professor	\$76,362	\$69,253	\$70,503	\$71,306	\$73,800	\$75,442	\$79,013	\$82,802	\$84,482	\$85,201	\$85,014	\$83,050	7	\$91,804	\$93,159
Assistant Professor	\$63,944	\$68,169	\$64,329	\$65,178	\$65,622	\$66,760	\$67,884	\$69,766	\$70,379	\$72,250	\$71,330	\$70,114	11	\$78,617	\$77,289
Instructor															
All	\$82,921	\$86,480	\$84,717	\$86,430	\$83,840	\$84,977	\$85,131	\$87,226	\$89,688	\$92,269	\$89,453	\$88,848	24	\$97,140	\$94,160
Index															
Professor	0.92	0.91	0.89	0.98	1.03	1.00	1.05	1.01	1.05	0.95	0.93	1.03			
Associate Professor	1.01	0.91	0.90	0.91	0.90	0.90	0.95	0.96	0.96	0.98	0.93	0.89			
Assistant Professor	1.05	1.08	0.99	0.99	0.98	0.95	0.96	0.98	0.96	0.94	0.91	0.91			
Instructor															
All	0.97	0.93	0.90	0.95	0.96	0.95	0.99	0.98	0.99	0.95	0.92	0.94			
KINESIOLOGY⁴															
Average Salaries															
Professor	\$96,499	\$95,069	\$95,469	\$96,806	\$96,640	\$99,019	\$103,192	\$107,263	\$109,458	\$114,439	\$116,606	\$110,921	8	\$130,824	\$121,925
Associate Professor	\$68,247	\$71,566	\$70,174	\$78,712	\$77,696	\$74,801	\$79,288	\$81,415	\$82,229	\$84,696	\$85,397	\$84,044	4	\$86,405	\$84,144
Assistant Professor	\$52,575	\$52,058	\$54,753	\$55,320	\$58,493	\$60,958	\$62,718	\$66,304	\$67,217	\$71,483	\$73,225	\$74,500	7	\$74,699	\$73,084
Instructor															
All	\$70,285	\$73,888	\$75,903	\$80,162	\$79,983	\$84,026	\$84,920	\$84,751	\$86,146	\$91,502	\$94,053	\$91,844	19	\$100,795	\$95,977
Index															
Professor	1.00	0.96	0.95	0.99	0.96	0.97	0.94	0.93	0.92	0.87	0.89	0.91			
Associate Professor	0.96	1.00	0.97	1.11	1.07	0.97	1.01	1.03	1.03	0.99	0.99	1.00			
Assistant Professor	0.84	0.83	0.86	0.88	0.91	0.95	0.94	0.96	0.99	0.96	0.98	1.02			
Instructor															
All	0.94	0.95	0.94	1.01	0.97	0.97	0.95	0.96	0.96	0.92	0.93	0.96			

Iowa State University
Peer Land Grant Universities Faculty Salary Comparisons
2007-2008 through 2017-2018

COLLEGE/DEPARTMENT	2007-2008	2008-2009	2009-2010	2010-2011	2011-2012	2012-2013	2013-2014	2014-2015	2015-2016	2016-2017	2017-2018			PEER	
											AVERAGE SALARY & INDEX	MEDIAN SALARY & INDEX	COUNT	AVERAGE SALARY	MEDIAN SALARY
COLLEGE OF HUMAN SCIENCES, continued															
SCHOOL OF EDUCATION ¹⁰															
Average Salaries															
Professor						\$109,355	\$115,557	\$108,168	\$112,857	\$118,602	\$132,735	\$142,192	3	\$128,067	\$120,968
Associate Professor						\$78,003	\$80,210	\$82,939	\$82,577	\$86,102	\$85,742	\$87,560	13	\$89,522	\$85,204
Assistant Professor						\$65,427	\$67,017	\$68,773	\$69,225	\$71,053	\$70,080	\$70,451	24	\$76,467	\$73,390
Instructor															
All						\$80,795	\$86,029	\$82,204	\$84,381	\$82,999	\$79,869	\$81,392	40	\$84,580	\$80,798
Index															
Professor						0.97	1.06	0.87	0.94	0.96	1.04	1.18			
Associate Professor						0.98	1.01	1.00	0.96	0.98	0.96	1.03			
Assistant Professor						0.99	1.00	0.98	0.96	0.94	0.92	0.96			
Instructor															
All						0.98	1.02	0.95	0.96	0.96	0.94	1.01			
HUMAN SCIENCES SUMMARY															
Average Salaries															
Professor	\$95,724	\$99,563	\$99,912	\$102,799	\$104,783	\$107,549	\$112,400	\$113,019	\$115,951	\$119,436	\$123,221	\$120,196	28	\$136,139	\$132,943
Associate Professor	\$70,012	\$72,174	\$71,976	\$73,615	\$76,771	\$77,464	\$80,933	\$85,149	\$85,075	\$86,439	\$87,290	\$87,204	39	\$93,094	\$93,461
Assistant Professor	\$57,831	\$60,031	\$61,712	\$62,005	\$64,033	\$66,212	\$67,646	\$70,096	\$70,358	\$73,244	\$72,279	\$72,299	57	\$79,875	\$76,991
Instructor															
All	\$74,223	\$78,032	\$79,023	\$79,648	\$79,885	\$82,381	\$84,799	\$86,236	\$87,701	\$89,331	\$88,503	\$87,803	124	\$96,738	\$94,805
Index															
Professor	0.91	0.92	0.91	0.95	0.96	0.96	0.99	0.93	0.94	0.91	0.91	0.90			
Associate Professor	0.94	0.96	0.94	0.97	0.97	0.95	0.98	1.00	0.99	0.95	0.94	0.93			
Assistant Professor	0.95	0.95	0.94	0.94	0.95	0.95	0.93	0.97	0.95	0.93	0.90	0.94			
Instructor															
All	0.93	0.94	0.93	0.96	0.96	0.95	0.97	0.96	0.96	0.93	0.91	0.93			

**Iowa State University
Peer Land Grant Universities Faculty Salary Comparisons
2007-2008 through 2017-2018**

COLLEGE/DEPARTMENT	2007-2008	2008-2009	2009-2010	2010-2011	2011-2012	2012-2013	2013-2014	2014-2015	2015-2016	2016-2017	2017-2018			PEER	
											AVERAGE SALARY & INDEX	MEDIAN SALARY & INDEX	COUNT	AVERAGE SALARY	MEDIAN SALARY
-COLLEGE OF LIBERAL ARTS AND SCIENCES- HUMANITIES															
ENGLISH															
Average Salaries															
Professor	\$76,703	\$76,656	\$78,668	\$79,365	\$88,284	\$90,863	\$98,218	\$98,471	\$101,123	\$103,226	\$101,838	\$94,399	12	\$123,391	\$114,044
Associate Professor	\$59,298	\$61,501	\$61,910	\$61,912	\$63,533	\$66,827	\$69,804	\$71,375	\$71,773	\$74,242	\$72,895	\$75,000	13	\$85,242	\$82,966
Assistant Professor	\$50,805	\$53,053	\$53,958	\$55,800	\$56,919	\$58,587	\$60,483	\$61,943	\$62,556	\$64,102	\$64,264	\$64,645	15	\$72,433	\$72,045
Instructor															
All	\$65,249	\$65,600	\$65,059	\$64,737	\$66,829	\$68,219	\$71,938	\$75,236	\$75,784	\$78,896	\$78,341	\$76,937	40	\$91,883	\$88,194
Index															
Professor	0.76	0.74	0.75	0.78	0.85	0.84	0.89	0.89	0.88	0.86	0.83	0.83			
Associate Professor	0.84	0.87	0.86	0.89	0.90	0.90	0.93	0.93	0.89	0.90	0.86	0.90			
Assistant Professor	0.89	0.92	0.90	0.95	0.95	0.93	0.94	0.93	0.92	0.91	0.89	0.90			
Instructor															
All	0.80	0.82	0.82	0.86	0.90	0.89	0.92	0.92	0.89	0.89	0.85	0.87			
GREENLEE SCHOOL OF JOURNALISM AND COMMUNICATION															
Average Salaries															
Professor	\$84,759	\$85,631	\$89,127	\$89,877	\$87,929	\$93,364	\$102,389	\$110,333	\$111,436	\$116,069	\$120,470	\$123,694	3	\$147,280	\$141,084
Associate Professor	\$69,897	\$70,764	\$68,218	\$66,991	\$64,730	\$70,236	\$81,378	\$82,680	\$80,127	\$82,490	\$83,053	\$82,409	6	\$101,389	\$92,650
Assistant Professor	\$55,366	\$56,973	\$55,173	\$53,343	\$53,389	\$55,334	\$60,422	\$64,001	\$62,307	\$65,033	\$65,533	\$63,131	6	\$80,126	\$81,521
Instructor															
All	\$66,760	\$68,200	\$65,754	\$68,448	\$67,695	\$71,361	\$78,167	\$78,313	\$77,174	\$79,984	\$83,528	\$82,955	15	\$102,062	\$97,885
Index															
Professor	0.80	0.78	0.78	0.77	0.75	0.73	0.83	0.85	0.88	0.82	0.82	0.88			
Associate Professor	0.92	0.91	0.87	0.85	0.79	0.82	0.98	0.96	0.88	0.87	0.82	0.89			
Assistant Professor	0.87	0.89	0.84	0.81	0.79	0.79	0.84	0.87	0.84	0.85	0.82	0.77			
Instructor															
All	0.85	0.85	0.83	0.81	0.78	0.78	0.89	0.90	0.86	0.85	0.82	0.85			
HISTORY															
Average Salaries															
Professor	\$82,377	\$84,755	\$88,409	\$79,439	\$80,630	\$82,308	\$88,108	\$89,214	\$91,196	\$100,493	\$97,292	\$109,268	8	\$127,605	\$124,454
Associate Professor	\$56,556	\$58,051	\$57,908	\$57,855	\$59,520	\$62,311	\$69,711	\$74,854	\$75,455	\$77,735	\$77,114	\$76,790	7	\$89,216	\$90,133
Assistant Professor	\$49,339	\$47,789	\$49,203	\$49,605	\$51,464	\$52,742	\$57,070	\$60,630	\$62,039	\$65,715	\$65,270	\$65,205	6	\$75,199	\$75,317
Instructor															
All	\$63,081	\$62,962	\$63,294	\$64,204	\$64,596	\$65,429	\$72,660	\$74,057	\$74,811	\$82,398	\$81,417	\$85,853	21	\$99,835	\$98,974
Index															
Professor	0.78	0.79	0.82	0.75	0.75	0.73	0.77	0.76	0.76	0.82	0.76	0.88			
Associate Professor	0.80	0.79	0.78	0.78	0.79	0.79	0.87	0.93	0.88	0.90	0.86	0.85			
Assistant Professor	0.83	0.78	0.78	0.82	0.84	0.82	0.86	0.90	0.88	0.93	0.87	0.87			
Instructor															
All	0.80	0.79	0.80	0.77	0.78	0.77	0.82	0.86	0.83	0.87	0.82	0.87			

Iowa State University
Peer Land Grant Universities Faculty Salary Comparisons
2007-2008 through 2017-2018

COLLEGE/DEPARTMENT	2007-2008	2008-2009	2009-2010	2010-2011	2011-2012	2012-2013	2013-2014	2014-2015	2015-2016	2016-2017	2017-2018			PEER	
											AVERAGE SALARY & INDEX	MEDIAN SALARY & INDEX	COUNT	AVERAGE SALARY	MEDIAN SALARY
COLLEGE OF LIBERAL ARTS AND SCIENCES- HUMANITIES, continued															
MUSIC AND THEATRE⁶															
Average Salaries															
Professor	\$86,473	\$67,611	\$68,212	\$68,503	\$70,532	\$70,940	\$75,689	\$86,184	\$81,996	\$83,325	\$84,612	\$88,877	7	\$112,230	\$104,495
Associate Professor	\$55,567	\$56,709	\$54,957	\$56,038	\$57,439	\$57,900	\$61,970	\$65,763	\$66,406	\$68,660	\$68,922	\$68,654	8	\$81,061	\$80,457
Assistant Professor	\$46,134	\$47,899	\$49,207	\$51,457	\$51,426	\$52,234	\$56,138	\$59,645	\$58,690	\$60,520	\$60,520	\$59,641	6	\$70,143	\$67,400
Instructor															
All	\$67,900	\$59,567	\$59,937	\$60,508	\$62,003	\$60,915	\$65,490	\$71,075	\$69,262	\$71,223	\$71,752	\$72,820	21	\$88,332	\$84,739
Index															
Professor	0.96	0.75	0.75	0.76	0.77	0.75	0.79	0.83	0.78	0.77	0.75	0.85			
Associate Professor	0.83	0.85	0.81	0.81	0.83	0.81	0.84	0.86	0.88	0.87	0.85	0.85			
Assistant Professor	0.82	0.84	0.85	0.90	0.88	0.84	0.89	0.91	0.88	0.84	0.86	0.88			
Instructor															
All	0.90	0.80	0.79	0.80	0.80	0.79	0.83	0.86	0.84	0.82	0.81	0.86			
PHILOSOPHY AND RELIGIOUS STUDIES															
Average Salaries															
Professor	\$81,564	\$86,114	\$85,580	\$85,278	\$84,672	\$93,519	\$98,379	\$99,980	\$100,980	\$104,520	\$104,520	\$114,609	6	\$132,336	\$127,184
Associate Professor	\$58,941	\$61,863	\$60,627	\$61,853	\$62,734	\$64,253	\$71,157	\$72,161	\$73,114	\$75,262	\$74,322	\$73,740	9	\$91,576	\$92,804
Assistant Professor	\$48,583	\$51,197	\$54,182	\$53,546	\$54,196	\$56,565	\$58,689	\$60,503	\$61,158	\$65,703	\$65,676	\$64,997	4	\$73,348	\$72,118
Instructor															
All	\$64,862	\$68,552	\$69,385	\$67,354	\$66,966	\$69,122	\$72,295	\$74,856	\$75,185	\$79,980	\$82,038	\$84,805	19	\$100,610	\$99,306
Index															
Professor	0.81	0.82	0.80	0.80	0.75	0.81	0.83	0.85	0.82	0.82	0.79	0.90			
Associate Professor	0.85	0.90	0.84	0.88	0.86	0.84	0.92	0.88	0.84	0.85	0.81	0.79			
Assistant Professor	0.85	0.89	0.93	0.92	0.89	0.92	0.91	0.88	0.88	0.91	0.90	0.90			
Instructor															
All	0.83	0.86	0.83	0.85	0.82	0.85	0.88	0.87	0.84	0.86	0.82	0.85			
WORLD LANGUAGES & CULTURES¹¹															
Average Salaries															
Professor	\$71,552	\$74,256	\$74,256	\$76,267	\$77,411	\$79,388	\$81,937	\$114,978	\$92,350	\$96,163	\$99,163	\$106,396	3	\$124,734	\$121,558
Associate Professor	\$66,390	\$67,065	\$57,937	\$59,201	\$60,066	\$61,706	\$68,168	\$71,021	\$71,088	\$73,113	\$74,423	\$73,704	18	\$79,115	\$82,253
Assistant Professor	\$49,105	\$51,903	\$51,169	\$51,078	\$51,844	\$52,195	\$53,013	\$57,631	\$58,388	\$62,667	\$62,317	\$61,800	7	\$75,171	\$72,310
Instructor															
All	\$59,388	\$62,195	\$57,823	\$59,801	\$60,688	\$62,425	\$67,032	\$77,070	\$71,104	\$73,959	\$74,047	\$74,231	28	\$83,017	\$83,979
Index															
Professor	0.72	0.74	0.73	0.78	0.77	0.76	0.77	1.06	0.84	0.85	0.79	0.88			
Associate Professor	0.99	0.99	0.85	0.86	0.85	0.84	0.91	0.95	0.95	0.94	0.94	0.90			
Assistant Professor	0.89	0.91	0.88	0.90	0.89	0.85	0.85	0.90	0.85	0.88	0.83	0.85			
Instructor															
All	0.86	0.89	0.83	0.85	0.84	0.82	0.86	0.97	0.90	0.91	0.89	0.88			

**Iowa State University
Peer Land Grant Universities Faculty Salary Comparisons
2007-2008 through 2017-2018**

COLLEGE/DEPARTMENT	2007-2008	2008-2009	2009-2010	2010-2011	2011-2012	2012-2013	2013-2014	2014-2015	2015-2016	2016-2017	2017-2018			PEER	
											AVERAGE SALARY & INDEX	MEDIAN SALARY & INDEX	COUNT	AVERAGE SALARY	MEDIAN SALARY
											COLLEGE OF LIBERAL ARTS AND SCIENCES- HUMANITIES, continued				
HUMANITIES SUMMARY															
Average Salaries															
Professor	\$80,042	\$78,209	\$79,039	\$78,582	\$81,198	\$84,396	\$90,284	\$97,514	\$95,241	\$99,201	\$99,454	\$102,744	39	\$125,569	\$119,145
Associate Professor	\$60,230	\$61,676	\$60,318	\$61,033	\$61,893	\$64,590	\$69,721	\$72,153	\$72,395	\$74,763	\$74,519	\$74,534	61	\$85,865	\$85,653
Assistant Professor	\$50,433	\$52,222	\$52,559	\$52,950	\$53,744	\$55,302	\$58,503	\$60,990	\$61,257	\$64,124	\$63,882	\$63,412	44	\$74,066	\$73,198
Instructor															
All	\$64,703	\$64,639	\$63,605	\$64,096	\$65,030	\$66,431	\$71,104	\$74,945	\$74,057	\$77,813	\$78,022	\$78,776	144	\$93,013	\$90,918
Index															
Professor	0.80	0.77	0.77	0.77	0.78	0.77	0.82	0.87	0.82	0.82	0.79	0.86			
Associate Professor	0.86	0.88	0.84	0.86	0.85	0.85	0.91	0.92	0.89	0.89	0.87	0.87			
Assistant Professor	0.86	0.88	0.86	0.89	0.89	0.87	0.90	0.90	0.88	0.89	0.86	0.87			
Instructor															
All	0.83	0.83	0.82	0.83	0.83	0.83	0.88	0.90	0.87	0.87	0.84	0.87			

Iowa State University
Peer Land Grant Universities Faculty Salary Comparisons
2007-2008 through 2017-2018

COLLEGE/DEPARTMENT	2007-2008	2008-2009	2009-2010	2010-2011	2011-2012	2012-2013	2013-2014	2014-2015	2015-2016	2016-2017	2017-2018			PEER	
											AVERAGE SALARY & INDEX	MEDIAN SALARY & INDEX	COUNT	AVERAGE SALARY	MEDIAN SALARY
-COLLEGE OF LIBERAL ARTS AND SCIENCES- SCIENCE AND MATHEMATICS															
BIOCHEMISTRY, BIOPHYSICS, AND MOLECULAR BIOLOGY¹															
Average Salaries															
Professor	\$107,555	\$113,001	\$110,626	\$111,801	\$112,056	\$117,274	\$120,536	\$129,393	\$130,684	\$137,825	\$149,802	\$145,793	8	\$147,829	\$145,425
Associate Professor	\$84,665	\$92,182	\$94,361	\$94,361	\$75,786	\$77,114	\$79,157	\$82,082	\$82,902	\$85,257	\$85,032	\$83,970	3	\$97,418	\$94,204
Assistant Professor	\$65,345	\$69,292	\$69,156	\$69,156	\$67,207		\$71,710	\$73,433	\$75,343	\$77,177	\$75,292	\$74,455	3	\$87,671	\$86,713
Instructor															
All	\$91,280	\$96,349	\$98,903	\$99,687	\$102,274	\$109,242	\$108,574	\$112,869	\$114,184	\$113,720	\$119,956	\$117,259	14	\$124,136	\$121,868
Index															
Professor	0.92	0.91	0.87	0.92	0.89	0.86	0.87	0.91	0.85	0.89	1.01	1.00			
Associate Professor	1.12	1.17	1.16	1.22	0.91	0.88	0.87	0.92	0.87	0.83	0.87	0.89			
Assistant Professor	1.00	1.03	1.00	0.98	0.94	0.00	0.95	0.92	0.88	0.87	0.86	0.86			
Instructor															
All	0.97	0.97	0.90	0.95	0.90	0.86	0.87	0.91	0.85	0.88	0.97	0.96			
CHEMISTRY															
Average Salaries															
Professor	\$116,981	\$120,785	\$118,873	\$117,778	\$120,642	\$124,904	\$124,556	\$122,257	\$123,251	\$125,094	\$124,008	\$140,320	15	\$159,468	\$168,019
Associate Professor	\$87,313	\$89,270	\$80,155	\$77,310	\$79,682	\$84,439	\$87,225	\$87,605	\$87,651	\$90,447	\$94,212	\$92,011	5	\$99,871	\$96,202
Assistant Professor	\$67,930	\$69,585	\$70,310	\$72,238	\$72,307	\$73,775	\$77,477	\$78,655	\$78,769	\$83,219	\$82,163	\$81,600	7	\$89,737	\$88,265
Instructor															
All	\$105,266	\$106,437	\$103,415	\$104,472	\$102,619	\$104,503	\$106,158	\$103,764	\$103,059	\$108,851	\$107,641	\$116,150	27	\$130,353	\$134,043
Index															
Professor	0.94	0.95	0.91	0.93	0.92	0.90	0.88	0.84	0.82	0.81	0.78	0.84			
Associate Professor	1.06	1.05	0.96	0.92	0.94	0.96	0.99	0.97	0.94	0.94	0.94	0.96			
Assistant Professor	0.98	1.00	0.99	1.01	1.01	0.97	1.05	0.99	0.94	0.96	0.92	0.92			
Instructor															
All	0.95	0.96	0.93	0.94	0.94	0.92	0.92	0.89	0.86	0.85	0.83	0.87			
COMPUTER SCIENCE															
Average Salaries															
Professor	\$123,390	\$127,854	\$131,027	\$132,191	\$134,174	\$137,233	\$137,382	\$140,763	\$140,837	\$134,612	\$135,148	\$125,015	14	\$170,335	\$157,808
Associate Professor	\$90,359	\$98,126	\$91,835	\$91,647	\$92,922	\$94,545	\$96,639	\$99,073	\$101,280	\$102,283	\$102,561	\$99,606	9	\$123,490	\$123,398
Assistant Professor	\$80,728	\$84,433	\$83,672	\$83,331	\$83,389	\$84,599	\$90,000	\$92,417	\$93,341	\$96,561	\$97,214	\$97,000	5	\$107,603	\$106,724
Instructor															
All	\$98,159	\$103,677	\$103,518	\$105,465	\$107,010	\$111,222	\$111,041	\$114,738	\$115,049	\$119,031	\$117,900	\$111,845	28	\$144,075	\$137,626
Index															
Professor	0.94	0.92	0.93	0.95	0.92	0.88	0.88	0.90	0.89	0.80	0.79	0.79			
Associate Professor	0.91	0.95	0.88	0.89	0.88	0.86	0.87	0.87	0.86	0.84	0.83	0.81			
Assistant Professor	0.91	0.94	0.93	0.92	0.90	0.88	0.92	0.95	0.94	0.93	0.90	0.91			
Instructor															
All	0.93	0.93	0.91	0.92	0.90	0.87	0.87	0.89	0.88	0.83	0.82	0.81			

Iowa State University
Peer Land Grant Universities Faculty Salary Comparisons
2007-2008 through 2017-2018

COLLEGE/DEPARTMENT	2007-2008	2008-2009	2009-2010	2010-2011	2011-2012	2012-2013	2013-2014	2014-2015	2015-2016	2016-2017	2017-2018			PEER	
											AVERAGE SALARY & INDEX	MEDIAN SALARY & INDEX	COUNT	AVERAGE SALARY	MEDIAN SALARY
COLLEGE OF LIBERAL ARTS AND SCIENCES - SCIENCE AND MATHEMATICS, continued															
ECOLOGY, EVOLUTION, AND ORGANISMAL BIOLOGY¹															
Average Salaries															
Professor	\$97,036	\$98,577	\$96,737	\$96,971	\$98,426	\$100,849	\$102,266	\$102,214	\$102,380	\$106,141	\$110,556	\$106,212	11	\$134,421	\$117,591
Associate Professor	\$72,618	\$79,367	\$79,035	\$78,095	\$79,266	\$81,974	\$83,340	\$85,532	\$85,742	\$88,369	\$87,325	\$85,785	4	\$96,259	\$95,840
Assistant Professor	\$61,281	\$64,912	\$66,000	\$65,862	\$66,850	\$69,075	\$73,739	\$76,708	\$76,782	\$79,671	\$80,471	\$79,118	5	\$86,778	\$83,400
Instructor															
All	\$74,100	\$78,722	\$81,440	\$82,057	\$83,288	\$86,944	\$90,789	\$93,833	\$92,378	\$96,266	\$98,389	\$95,353	20	\$114,878	\$104,693
Index															
Professor	0.91	0.90	0.85	0.87	0.84	0.81	0.81	0.81	0.80	0.74	0.82	0.90			
Associate Professor	0.94	1.02	1.01	1.01	1.01	0.99	0.98	0.98	0.96	0.83	0.91	0.90			
Assistant Professor	0.95	0.99	1.00	0.96	0.93	0.94	1.01	1.01	0.96	0.90	0.93	0.95			
Instructor															
All	0.93	0.97	0.93	0.94	0.92	0.89	0.88	0.88	0.86	0.78	0.86	0.91			
GENETICS, DEVELOPMENT, AND CELL BIOLOGY¹															
Average Salaries															
Professor	\$109,100	\$120,453	\$112,855	\$117,180	\$115,953	\$113,715	\$117,027	\$128,741	\$127,861	\$132,267	\$126,962	\$125,505	8	\$146,868	\$146,678
Associate Professor	\$68,549	\$70,480	\$66,884	\$64,915	\$80,462	\$79,757	\$83,125	\$93,027	\$94,312	\$97,926	\$88,925	\$88,925	2	\$100,217	\$100,506
Assistant Professor	\$65,757	\$69,744	\$72,362	\$71,022	\$72,087	\$73,946	\$73,755	\$75,201	\$78,045	\$80,544	\$81,304	\$80,675	5	\$91,039	\$88,008
Instructor															
All	\$90,612	\$98,120	\$95,890	\$97,096	\$97,157	\$96,254	\$97,399	\$106,262	\$106,248	\$108,038	\$106,671	\$105,684	15	\$122,038	\$120,965
Index															
Professor	1.02	1.07	1.01	1.03	1.00	0.94	0.92	0.93	1.01	0.93	0.86	0.86			
Associate Professor	0.89	0.89	0.84	0.81	1.02	0.97	0.99	1.07	1.00	1.06	0.89	0.88			
Assistant Professor	1.00	1.04	1.07	1.03	1.02	0.98	0.94	0.90	0.90	0.97	0.89	0.92			
Instructor															
All	0.99	1.03	0.99	1.00	1.00	0.95	0.94	0.96	0.98	0.96	0.87	0.87			
GEOLOGICAL AND ATMOSPHERIC SCIENCES															
Average Salaries															
Professor	\$82,449	\$88,818	\$88,818	\$89,728	\$90,209	\$92,386	\$94,751	\$104,013	\$104,631	\$107,003	\$107,669	\$104,096	9	\$139,151	\$131,373
Associate Professor	\$66,413	\$73,960	\$72,533	\$69,794	\$69,276	\$73,284	\$74,397	\$79,924	\$81,754	\$84,454	\$84,454	\$86,717	3	\$93,106	\$90,839
Assistant Professor	\$61,902	\$64,495	\$63,569	\$63,569	\$64,523	\$67,340	\$68,835	\$74,531	\$73,542	\$76,038	\$76,038	\$73,212	5	\$83,983	\$84,081
Instructor															
All	\$74,063	\$81,647	\$80,558	\$82,637	\$84,647	\$84,830	\$86,854	\$94,905	\$91,450	\$93,099	\$94,269	\$91,946	17	\$114,800	\$110,310
Index															
Professor	0.79	0.84	0.82	0.85	0.82	0.78	0.79	0.83	0.82	0.80	0.77	0.79			
Associate Professor	0.86	0.92	0.90	0.88	0.87	0.85	0.86	0.89	0.94	0.94	0.91	0.95			
Assistant Professor	0.97	0.98	0.95	0.95	0.95	0.93	0.93	0.96	0.95	0.93	0.91	0.87			
Instructor															
All	0.83	0.87	0.85	0.86	0.83	0.81	0.82	0.85	0.86	0.85	0.82	0.83			

Iowa State University
Peer Land Grant Universities Faculty Salary Comparisons
2007-2008 through 2017-2018

COLLEGE/DEPARTMENT	2007-2008	2008-2009	2009-2010	2010-2011	2011-2012	2012-2013	2013-2014	2014-2015	2015-2016	2016-2017	2017-2018			PEER	
											AVERAGE SALARY & INDEX	MEDIAN SALARY & INDEX	COUNT	AVERAGE SALARY	MEDIAN SALARY
COLLEGE OF LIBERAL ARTS AND SCIENCES - SCIENCE AND MATHEMATICS, continued															
MATHEMATICS															
Average Salaries															
Professor	\$96,151	\$94,420	\$91,283	\$94,037	\$91,693	\$95,361	\$98,148	\$106,129	\$107,882	\$112,162	\$112,903	\$116,839	15	\$140,254	\$134,668
Associate Professor	\$69,162	\$69,605	\$67,063	\$70,709	\$70,605	\$71,802	\$73,359	\$76,418	\$77,764	\$81,254	\$84,653	\$82,410	8	\$99,575	\$100,680
Assistant Professor	\$61,097	\$61,286	\$63,876	\$63,978	\$64,958	\$67,871	\$70,019	\$71,848	\$73,673	\$75,201	\$77,030	\$76,225	10	\$92,096	\$92,450
Instructor															
All	\$80,842	\$81,628	\$81,421	\$82,921	\$80,793	\$82,413	\$85,457	\$89,325	\$89,848	\$92,716	\$95,184	\$96,185	33	\$115,799	\$113,635
Index															
Professor	0.84	0.82	0.78	0.82	0.77	0.77	0.77	0.82	0.82	0.82	0.80	0.87			
Associate Professor	0.88	0.88	0.83	0.88	0.86	0.84	0.84	0.84	0.83	0.85	0.85	0.82			
Assistant Professor	0.95	0.92	0.88	0.86	0.85	0.84	0.87	0.84	0.84	0.84	0.84	0.82			
Instructor															
All	0.87	0.85	0.80	0.84	0.81	0.80	0.80	0.83	0.83	0.83	0.82	0.85			
PHYSICS AND ASTRONOMY															
Average Salaries															
Professor	\$109,210	\$120,032	\$118,004	\$118,428	\$120,439	\$120,990	\$120,544	\$119,595	\$122,498	\$125,599	\$123,689	\$118,566	25	\$143,710	\$137,532
Associate Professor	\$72,683	\$77,573	\$76,548	\$77,351	\$78,999	\$77,842	\$77,068	\$78,389	\$79,402	\$88,591	\$89,686	\$91,555	6	\$102,306	\$100,179
Assistant Professor	\$65,868	\$69,010	\$67,708	\$68,000	\$69,020	\$71,665	\$72,460	\$73,208	\$79,407	\$84,458	\$84,350	\$84,250	5	\$90,861	\$90,060
Instructor															
All	\$94,318	\$103,673	\$101,544	\$102,032	\$104,028	\$106,763	\$108,618	\$107,018	\$108,133	\$112,286	\$112,558	\$109,298	36	\$129,469	\$124,713
Index															
Professor	0.93	1.01	0.99	1.00	1.01	0.96	0.94	0.92	0.94	0.90	0.86	0.86			
Associate Professor	0.86	0.94	0.93	0.94	0.94	0.88	0.84	0.84	0.83	0.88	0.88	0.91			
Assistant Professor	0.93	0.94	0.92	0.91	0.94	0.89	0.92	0.89	0.95	0.96	0.93	0.94			
Instructor															
All	0.92	0.99	0.97	0.98	0.99	0.94	0.92	0.90	0.92	0.90	0.87	0.88			
STATISTICS															
Average Salaries															
Professor	\$122,777	\$123,712	\$124,303	\$131,507	\$132,041	\$134,782	\$135,715	\$142,645	\$142,780	\$148,800	\$148,942	\$142,687	14	\$148,902	\$142,023
Associate Professor	\$83,789	\$90,254	\$87,223	\$87,740	\$87,364	\$89,349	\$91,681	\$94,872	\$93,938	\$97,575	\$99,210	\$98,362	11	\$109,294	\$110,019
Assistant Professor	\$73,560	\$79,666	\$81,142	\$82,314	\$82,143	\$84,539	\$86,235	\$88,720	\$90,372	\$92,990	\$92,025	\$92,700	5	\$96,279	\$94,097
Instructor															
All	\$102,537	\$104,998	\$103,792	\$107,080	\$108,832	\$110,619	\$114,393	\$116,304	\$115,382	\$120,026	\$121,221	\$118,103	30	\$125,609	\$122,300
Index															
Professor	0.99	0.96	0.94	1.03	1.02	0.96	0.97	1.01	0.99	1.01	1.00	1.00			
Associate Professor	0.97	1.01	0.99	1.00	0.99	0.97	0.95	0.95	0.92	0.94	0.91	0.89			
Assistant Professor	1.01	1.05	1.04	1.05	1.08	1.00	1.02	1.02	1.00	1.00	0.96	0.99			
Instructor															
All	0.99	0.98	0.97	1.02	1.02	0.97	0.97	0.99	0.97	0.99	0.97	0.97			

**Iowa State University
Peer Land Grant Universities Faculty Salary Comparisons
2007-2008 through 2017-2018**

COLLEGE/DEPARTMENT	2007-2008	2008-2009	2009-2010	2010-2011	2011-2012	2012-2013	2013-2014	2014-2015	2015-2016	2016-2017	2017-2018			PEER	
											AVERAGE SALARY & INDEX	MEDIAN SALARY & INDEX	COUNT	AVERAGE SALARY	MEDIAN SALARY
COLLEGE OF LIBERAL ARTS AND SCIENCES - SCIENCE AND MATHEMATICS, continued															
SCIENCE AND MATHEMATICS SUMMARY															
Average Salaries															
Professor	\$108,734	\$112,876	\$111,080	\$112,959	\$113,549	\$116,076	\$117,180	\$121,879	\$122,841	\$126,524	\$126,238	\$124,747	119	\$148,290	\$142,764
Associate Professor	\$76,248	\$81,504	\$79,532	\$79,952	\$81,925	\$83,606	\$85,483	\$88,443	\$89,266	\$91,713	\$92,870	\$91,768	51	\$105,500	\$104,859
Assistant Professor	\$68,039	\$70,896	\$71,900	\$71,973	\$71,364	\$72,632	\$75,050	\$77,751	\$79,146	\$81,786	\$82,567	\$81,832	50	\$91,897	\$90,687
Instructor															
All	\$91,017	\$95,633	\$95,463	\$96,729	\$97,272	\$99,410	\$101,672	\$104,801	\$104,418	\$107,875	\$108,578	\$107,349	220	\$125,554	\$122,141
Index															
Professor	0.92	0.93	0.91	0.94	0.92	0.89	0.88	0.89	0.88	0.86	0.85	0.87			
Associate Professor	0.92	0.96	0.92	0.93	0.93	0.90	0.90	0.92	0.90	0.90	0.88	0.88			
Assistant Professor	0.96	0.97	0.97	0.97	0.96	0.93	0.96	0.93	0.92	0.93	0.90	0.90			
Instructor															
All	0.93	0.95	0.92	0.94	0.93	0.90	0.89	0.90	0.89	0.88	0.86	0.88			

Iowa State University
Peer Land Grant Universities Faculty Salary Comparisons
2007-2008 through 2017-2018

COLLEGE/DEPARTMENT	2007-2008	2008-2009	2009-2010	2010-2011	2011-2012	2012-2013	2013-2014	2014-2015	2015-2016	2016-2017	2017-2018			PEER	
											AVERAGE SALARY & INDEX	MEDIAN SALARY & INDEX	COUNT	AVERAGE SALARY	MEDIAN SALARY
-COLLEGE OF LIBERAL ARTS AND SCIENCES- SOCIAL SCIENCES															
ANTHROPOLOGY															
Average Salaries															
Professor					\$91,402	\$100,542	\$105,555	\$125,000	\$126,250	\$129,050					
Associate Professor	\$61,169	\$72,937	\$69,540	\$72,340	\$60,349	\$63,933	\$66,532	\$68,805	\$71,380	\$74,565					
Assistant Professor	\$50,909	\$51,790	\$50,973	\$51,973	\$53,402	\$55,169	\$57,022	\$61,292	\$64,691	\$66,288					
Instructor															
All	\$56,039	\$59,720	\$58,930	\$58,762	\$59,823	\$62,158	\$66,672	\$74,414	\$77,307	\$79,984					
Index															
Professor					0.86	0.92	0.95	1.08	1.04	1.04					
Associate Professor	0.87	1.03	0.97	1.01	0.82	0.83	0.84	0.85	0.87	0.86					
Assistant Professor	0.86	0.85	0.82	0.85	0.86	0.85	0.85	0.90	0.92	0.89					
Instructor															
All	0.86	0.92	0.89	0.91	0.86	0.86	0.87	0.93	0.92	0.90					
ECONOMICS															
Average Salaries															
Professor	\$132,382	\$143,793	\$143,367	\$142,446	\$147,779	\$171,016	\$163,627	\$169,262	\$169,235	\$176,028	\$174,327	\$165,113	7	\$229,267	\$217,352
Associate Professor	\$111,584	\$109,643	\$114,018	\$116,160	\$114,715	\$119,032	\$116,088	\$118,027	\$119,207	\$123,643	\$116,282	\$119,122	4	\$170,266	\$160,991
Assistant Professor	\$76,539	\$88,221	\$97,500	\$99,875	\$101,373	\$105,225	\$107,704	\$108,457	\$109,694	\$112,710	\$113,034	\$113,302	3	\$131,951	\$135,046
Instructor															
All	\$112,740	\$118,170	\$118,250	\$124,503	\$126,979	\$141,450	\$138,660	\$140,661	\$139,310	\$142,410	\$144,608	\$140,870	14	\$191,556	\$183,612
Index															
Professor	0.80	0.87	0.87	0.85	0.84	0.90	0.84	0.84	0.79	0.79	0.76	0.76			
Associate Professor	0.92	0.92	0.92	0.96	0.93	0.89	0.83	0.81	0.81	0.72	0.68	0.74			
Assistant Professor	0.81	0.86	0.96	0.96	0.96	0.92	0.92	0.90	0.88	0.89	0.86	0.84			
Instructor															
All	0.85	0.89	0.91	0.90	0.88	0.90	0.85	0.84	0.81	0.78	0.75	0.77			
POLITICAL SCIENCE															
Average Salaries															
Professor	\$100,532	\$115,620	\$115,620	\$106,319	\$108,249	\$107,239	\$110,097	\$118,874	\$120,063	\$123,716	\$123,555	\$130,669	5	\$157,001	\$152,935
Associate Professor	\$68,084	\$58,326	\$63,744	\$63,889	\$83,244	\$65,497	\$67,227	\$77,907	\$78,686	\$81,082	\$83,248	\$83,248	1	\$109,611	\$101,348
Assistant Professor	\$54,913	\$57,345	\$56,375	\$61,575	\$58,998	\$59,775	\$61,393	\$68,391	\$69,711	\$72,249	\$72,156	\$71,265	8	\$88,437	\$87,353
Instructor															
All	\$73,412	\$73,506	\$77,096	\$80,167	\$90,605	\$90,155	\$89,099	\$96,792	\$91,932	\$94,937	\$91,305	\$93,337	14	\$114,436	\$111,775
Index															
Professor	0.81	0.91	0.88	0.82	0.81	0.76	0.77	0.82	0.80	0.80	0.79	0.85			
Associate Professor	0.84	0.71	0.74	0.74	0.93	0.70	0.71	0.79	0.78	0.78	0.76	0.82			
Assistant Professor	0.78	0.82	0.78	0.85	0.80	0.76	0.78	0.86	0.84	0.85	0.82	0.82			
Instructor															
All	0.81	0.82	0.81	0.80	0.82	0.76	0.77	0.83	0.82	0.82	0.80	0.84			

Iowa State University
Peer Land Grant Universities Faculty Salary Comparisons
2007-2008 through 2017-2018

COLLEGE/DEPARTMENT	2007-2008	2008-2009	2009-2010	2010-2011	2011-2012	2012-2013	2013-2014	2014-2015	2015-2016	2016-2017	2017-2018			PEER	
											AVERAGE SALARY & INDEX	MEDIAN SALARY & INDEX	COUNT	AVERAGE SALARY	MEDIAN SALARY
COLLEGE OF LIBERAL ARTS AND SCIENCES- SOCIAL SCIENCES, continued															
PSYCHOLOGY															
Average Salaries															
Professor	\$121,853	\$118,744	\$118,744	\$119,458	\$116,806	\$117,632	\$118,000	\$116,278	\$118,543	\$120,915	\$123,810	\$105,516	12	\$152,858	\$147,665
Associate Professor	\$68,975	\$72,914	\$72,193	\$72,748	\$72,352	\$74,043	\$75,442	\$74,310	\$75,182	\$75,268	\$77,019	\$75,663	10	\$97,540	\$96,196
Assistant Professor	\$55,741	\$59,621	\$59,944	\$60,187	\$61,117	\$63,168	\$64,971	\$69,368	\$71,236	\$72,663	\$72,663	\$74,902	3	\$85,141	\$84,953
Instructor															
All	\$85,638	\$80,429	\$79,271	\$81,459	\$84,715	\$86,965	\$90,066	\$93,785	\$94,588	\$97,791	\$98,956	\$89,901	25	\$122,605	\$119,552
Index															
Professor	1.00	0.95	0.95	0.95	0.92	0.87	0.88	0.86	0.83	0.81	0.81	0.71			
Associate Professor	0.93	0.95	0.91	0.90	0.88	0.88	0.88	0.85	0.79	0.79	0.79	0.79			
Assistant Professor	0.83	0.88	0.86	0.86	0.86	0.86	0.87	0.89	0.88	0.89	0.85	0.88			
Instructor															
All	0.94	0.93	0.91	0.91	0.89	0.87	0.88	0.86	0.82	0.81	0.81	0.75			
SOCIOLOGY¹															
Average Salaries															
Professor	\$84,829	\$86,717	\$86,717	\$75,909	\$81,667	\$86,231	\$88,906	\$96,660	\$101,764	\$101,273	\$98,002	\$92,525	9	\$140,506	\$131,466
Associate Professor	\$62,894	\$70,585	\$68,993	\$68,203	\$68,708	\$67,141	\$68,932	\$75,105	\$77,569	\$80,617	\$69,558	\$69,558	2	\$99,980	\$97,959
Assistant Professor	\$54,532	\$55,872	\$55,551	\$57,051	\$56,672	\$56,276	\$59,160	\$63,429	\$66,042	\$71,474	\$72,392	\$72,392	2	\$80,519	\$81,999
Instructor															
All	\$65,311	\$70,109	\$69,945	\$66,939	\$69,757	\$73,328	\$76,794	\$84,821	\$89,194	\$90,131	\$89,686	\$85,894	13	\$125,042	\$118,700
Index															
Professor	0.74	0.75	0.71	0.63	0.67	0.66	0.69	0.76	0.74	0.72	0.70	0.70			
Associate Professor	0.82	0.91	0.88	0.85	0.84	0.79	0.79	0.85	0.83	0.84	0.70	0.71			
Assistant Professor	0.85	0.85	0.83	0.86	0.83	0.80	0.81	0.86	0.85	0.92	0.90	0.88			
Instructor															
All	0.80	0.85	0.82	0.80	0.78	0.73	0.73	0.79	0.77	0.77	0.72	0.72			
SOCIAL SCIENCES SUMMARY															
Average Salaries															
Professor	\$114,453	\$118,100	\$115,002	\$117,194	\$116,208	\$121,640	\$121,096	\$120,999	\$123,025	\$124,687	\$127,449	\$118,426	33	\$166,325	\$158,828
Associate Professor	\$77,167	\$80,003	\$79,865	\$79,749	\$80,964	\$81,757	\$80,926	\$83,669	\$84,795	\$87,079	\$85,746	\$85,617	17	\$115,649	\$111,952
Assistant Professor	\$57,381	\$59,174	\$60,400	\$62,003	\$62,399	\$63,946	\$67,155	\$71,912	\$75,237	\$78,270	\$79,945	\$79,970	16	\$94,988	\$95,176
Instructor															
All	\$82,394	\$83,015	\$81,601	\$84,833	\$88,111	\$92,573	\$94,602	\$99,004	\$99,750	\$101,933	\$105,191	\$100,652	66	\$135,978	\$131,323
Index															
Professor	0.86	0.88	0.87	0.85	0.84	0.83	0.82	0.83	0.79	0.78	0.77	0.75			
Associate Professor	0.88	0.91	0.89	0.89	0.88	0.85	0.83	0.84	0.81	0.79	0.74	0.76			
Assistant Professor	0.82	0.85	0.85	0.87	0.87	0.85	0.85	0.88	0.87	0.88	0.84	0.84			
Instructor															
All	0.86	0.90	0.87	0.87	0.86	0.84	0.83	0.84	0.81	0.80	0.77	0.77			

**Iowa State University
Peer Land Grant Universities Faculty Salary Comparisons
2007-2008 through 2017-2018**

COLLEGE/DEPARTMENT	2007-2008	2008-2009	2009-2010	2010-2011	2011-2012	2012-2013	2013-2014	2014-2015	2015-2016	2016-2017	2017-2018			PEER	
											AVERAGE SALARY & INDEX	MEDIAN SALARY & INDEX	COUNT	AVERAGE SALARY	MEDIAN SALARY
											LIBERAL ARTS AND SCIENCES SUMMARY				
Average Salaries															
Professor	\$101,425	\$104,831	\$103,687	\$105,720	\$107,218	\$111,137	\$113,119	\$117,556	\$118,230	\$121,261	\$120,978	\$119,162	191	\$146,766	\$140,717
Associate Professor	\$70,960	\$73,819	\$72,702	\$73,073	\$74,076	\$76,165	\$78,652	\$81,840	\$82,226	\$84,623	\$83,253	\$82,808	129	\$97,552	\$96,712
Assistant Professor	\$59,473	\$61,946	\$61,607	\$62,460	\$62,523	\$63,374	\$66,053	\$69,333	\$71,352	\$74,365	\$74,711	\$74,193	110	\$85,214	\$84,344
Instructor															
All	\$81,085	\$83,723	\$82,804	\$84,579	\$85,727	\$88,046	\$91,057	\$95,041	\$94,718	\$98,085	\$97,825	\$96,752	430	\$116,256	\$113,094
Index															
Professor	0.89	0.89	0.87	0.89	0.88	0.86	0.86	0.88	0.86	0.84	0.82	0.85			
Associate Professor	0.89	0.92	0.89	0.90	0.89	0.87	0.89	0.90	0.88	0.87	0.85	0.86			
Assistant Professor	0.90	0.92	0.91	0.92	0.91	0.89	0.91	0.91	0.90	0.91	0.88	0.88			
Instructor															
All	0.89	0.91	0.88	0.90	0.89	0.87	0.88	0.89	0.87	0.86	0.84	0.86			

**Iowa State University
Peer Land Grant Universities Faculty Salary Comparisons
2007-2008 through 2017-2018**

COLLEGE/DEPARTMENT	2007-2008	2008-2009	2009-2010	2010-2011	2011-2012	2012-2013	2013-2014	2014-2015	2015-2016	2016-2017	2017-2018			PEER	
											AVERAGE SALARY & INDEX	MEDIAN SALARY & INDEX	COUNT	AVERAGE SALARY	MEDIAN SALARY
											-COLLEGE OF VETERINARY MEDICINE-				
Average Salaries															
Professor	\$ 109,606	\$ 118,604	\$ 120,425	\$ 122,756	\$ 121,724	\$ 126,092	\$ 127,321	\$ 128,753	\$ 132,319	\$ 136,497	\$ 136,506	\$ 128,600	40	\$ 145,671	\$ 133,761
Associate Professor	\$ 87,263	\$ 90,610	\$ 93,538	\$ 93,976	\$ 94,363	\$ 95,374	\$ 96,985	\$ 99,127	\$ 100,499	\$ 106,573	\$ 107,530	\$ 104,575	27	\$ 112,413	\$ 109,836
Assistant Professor	\$ 75,331	\$ 81,476	\$ 81,890	\$ 84,321	\$ 85,450	\$ 89,904	\$ 91,762	\$ 94,080	\$ 95,704	\$ 97,744	\$ 97,743	\$ 92,431	30	\$ 95,436	\$ 92,668
Instructor															
All	\$ 93,744	\$ 99,994	\$ 101,303	\$ 103,553	\$ 103,440	\$ 107,182	\$ 108,296	\$ 109,670	\$ 112,144	\$ 115,941	\$ 116,452	\$ 110,727	97	\$ 120,877	\$ 114,392
Index															
Professor	1.02	1.05	1.05	1.11	1.09	1.04	1.05	1.00	1.01	1.01	0.94	0.96			
Associate Professor	1.03	1.01	1.04	1.07	1.07	0.97	0.99	0.96	0.95	0.98	0.96	0.95			
Assistant Professor	1.00	1.04	1.02	1.09	1.07	1.06	1.10	1.06	1.09	1.07	1.02	1.00			
Instructor															
All	1.02	1.04	1.04	1.09	1.08	1.02	1.04	1.00	1.01	1.02	0.96	0.97			

**Iowa State University
Peer Land Grant Universities Faculty Salary Comparisons
2007-2008 through 2017-2018**

COLLEGE/DEPARTMENT	2007-2008	2008-2009	2009-2010	2010-2011	2011-2012	2012-2013	2013-2014	2014-2015	2015-2016	2016-2017	2017-2018			PEER	
											AVERAGE SALARY & INDEX	MEDIAN SALARY & INDEX	COUNT	AVERAGE SALARY	MEDIAN SALARY
											-UNIVERSITY SUMMARY-				
Average Salaries															
Professor	\$107,212	\$112,250	\$111,444	\$113,945	\$115,564	\$119,829	\$122,850	\$125,475	\$125,963	\$129,753	\$131,417	\$128,747	503	\$145,460	\$141,426
Associate Professor	\$78,355	\$82,264	\$82,058	\$82,575	\$83,273	\$85,918	\$88,880	\$91,462	\$92,629	\$96,870	\$98,853	\$98,134	387	\$108,162	\$109,078
Assistant Professor	\$67,359	\$71,057	\$72,086	\$74,943	\$76,761	\$77,801	\$80,302	\$82,819	\$82,865	\$84,437	\$85,588	\$84,558	371	\$93,246	\$92,038
Instructor															
All	\$87,981	\$92,009	\$92,016	\$94,376	\$95,708	\$98,673	\$101,644	\$103,863	\$103,738	\$107,060	\$107,940	\$106,351	1,261	\$118,651	\$116,968
Index															
Professor	0.95	0.96	0.95	0.98	0.97	0.94	0.95	0.94	0.92	0.92	0.90	0.91			
Associate Professor	0.96	0.98	0.95	0.97	0.97	0.94	0.94	0.95	0.93	0.92	0.91	0.90			
Assistant Professor	0.94	0.96	0.95	0.97	0.95	0.93	0.94	0.94	0.93	0.94	0.92	0.92			
Instructor															
All	0.95	0.97	0.95	0.98	0.97	0.94	0.94	0.94	0.93	0.92	0.91	0.91			

Footnotes

Iowa State University
Peer Land Grant Universities Faculty Salary Comparisons
2007-2008 through 2017-2018

Footnotes

- ¹ Beginning with the 2014-15 report, departments that are administered by two colleges include the salary average and headcount for the entire department reported the same way in both colleges. In previous years, ISU faculty were divided into the college where they held rank. Because we use the CIP code to determine departments, we no longer separate faculty by college. This may affect the indices for some colleges. The following departments are reported in two colleges: Ag & Biosystems Engineering, Biochemistry, Biophysics and Molecular Biology, Ecology, Evolution, and Organismal Biology, Food Science and Human Nutrition, Genetics, Development, and Cell Biology, and Sociology. Economics appears in two colleges but there are two CIP codes used and therefore, they are not the same in the two colleges.
- ² Beginning 2004-2005, the department of Industrial Education and Technology was discontinued; faculty were moved to the department of Agricultural and Biosystems Engineering in the College of Agriculture.
- ⁴ Beginning July 1, 2007, the department of Health and Human Performance was changed to Kinesiology.
- ⁵ Beginning July 1, 2010, the department of Logistics Operations and Management Information Systems was changed to Supply Chain and Information Management.
- ⁶ Beginning July 1, 2010, the department of Music was changed to Music and Theatre.
- ⁷ Beginning July 1, 2011, the department of Plant Pathology was changed to Plant Pathology and Microbiology.
- ⁸ Beginning July 1, 2012, the department of Art and Design was divided into four departments – Integrated Studio Arts, Industrial Design, Interior Design and Graphic Design. There was not sufficient peer data available to separate these departments so they are combined in this report.
- ⁹ Beginning 2001-2002, the departments of Family and Consumer Sciences Education and Studies, Hotel Restaurant and Institution Management, and Textiles and Clothing are combined into the Department of Apparel, Educational Studies and Hospitality Management. In 2012, the name of the department was changed to Apparel, Events, and Hospitality Management.
- ¹⁰ Beginning July 1, 2012, the departments of Curriculum and Instruction and Educational Leadership and Policy Studies were combined into the School of Education.
- ¹¹ Beginning July 1, 2006, the department of Foreign Languages and Literature was changed to World Languages and Cultures.