

Expenditures and Transfers by Function (in thousands)

Fiscal Year

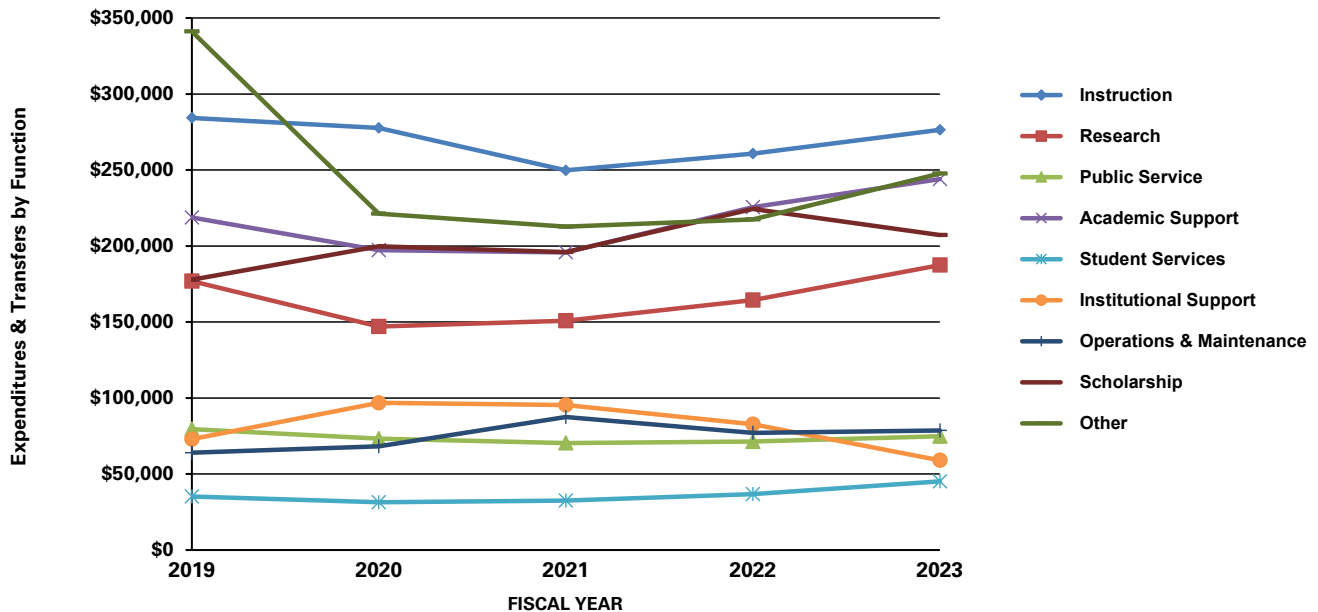
	2018-2019		2019-2020 ²		2020-2021		2021-2022		2022-2023	
	DOLLARS	%	DOLLARS	%	DOLLARS	%	DOLLARS	%	DOLLARS	%
Expenditures and Transfers										
Instruction	\$284,225	19.6%	\$277,672	21.2%	\$249,774	19.3%	\$260,761	19.2%	\$276,328	19.5%
Research	176,924	12.2%	147,031	11.2%	150,892	11.7%	164,348	12.1%	187,420	13.2%
Public Service	79,518	5.5%	73,248	5.6%	70,362	5.5%	71,358	5.2%	74,914	5.3%
Academic Support	218,697	15.1%	197,224	15.0%	195,785	15.2%	225,552	16.6%	243,996	17.2%
Student Services	35,240	2.4%	31,438	2.4%	32,456	2.5%	36,743	2.7%	45,157	3.2%
Institutional Support	72,961	5.0%	96,854	7.4%	95,426	7.4%	82,794	6.1%	59,007	4.2%
Operations and Maintenance	64,031	4.4%	68,164	5.2%	87,511	6.8%	77,137	5.7%	78,660	5.5%
Scholarship	177,815	12.3%	199,854	15.2%	196,059	15.2%	224,362	16.5%	207,140	14.6%
Other ¹	341,098	23.5%	221,299	16.9%	212,718	16.5%	217,523	16.0%	247,597	17.4%
Total	\$1,450,509		\$1,312,784		\$1,290,983		\$1,360,578		\$1,420,219	

¹Other includes the following:

Auxiliary Enterprises	211,174	172,912	160,650	164,028	189,918
Independent Operations	46,686	48,387	52,068	53,495	57,679
Mandatory Transfers Out (Educ. & Gen.) ²	17,366				
Non-Mandatory Transfers Out ²	65,872				

² Beginning with FY20, data has been restated to better align with annual audited financial statements. This includes the removal of mandatory and non-mandatory transfers from this chart. For more detailed financial data, please consult the university's annual financial report on the Controller's website (link below).

Expenditures and Transfers by Function



Office of Institutional Research (Source: Office of Controller)

[Annual Financial Reports](#)

Last Updated 1/26/2024