

Tenure-Track Faculty Salaries: Average by Rank¹

Based on Headcount for October Payroll

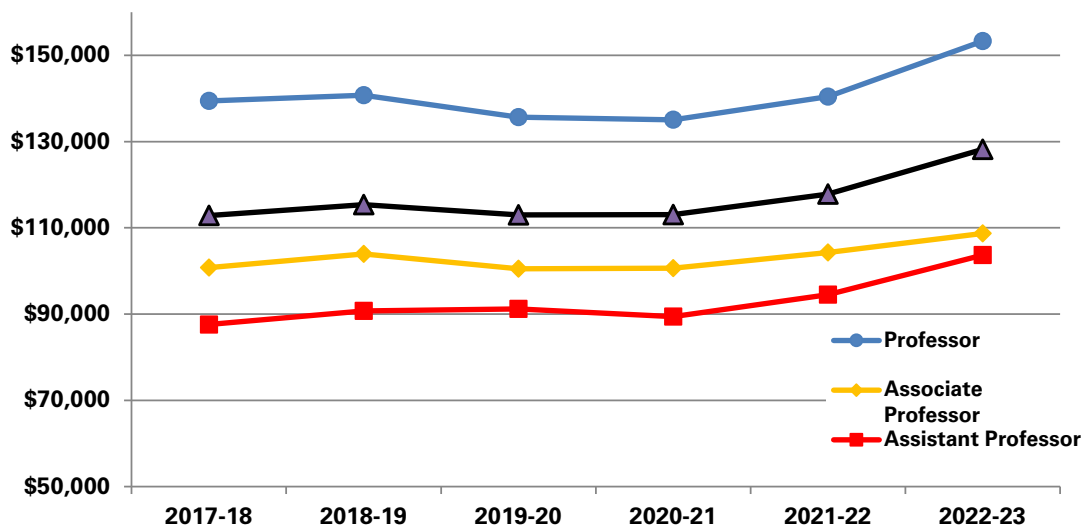
TOTAL UNIVERSITY	2018-2019	2019-2020	2020-2021	2021-2022	2022-2023
Nine-Month²					
Professor	\$136,541	\$138,317	\$138,623	\$142,191	\$148,787
Associate Professor	\$100,952	\$100,287	\$100,103	\$103,606	\$107,420
Assistant Professor	\$88,049	\$90,873	\$89,185	\$94,536	\$104,006
Nine-Month Rank Total	\$110,234	\$112,538	\$112,917	\$117,308	\$124,010
Twelve-Month²					
Professor	\$153,029	\$157,074	\$161,062	\$163,028	\$169,201
Associate Professor	\$129,182	\$126,157	\$128,558	\$134,580	\$135,494
Assistant Professor	\$110,015	\$115,101	\$111,336	\$115,404	\$124,067
Twelve-Month Rank Total	\$140,002	\$142,529	\$146,078	\$147,629	\$153,560
Nine-Month & Twelve-Month³					
Professor	\$140,779	\$135,651	\$135,043	\$140,403	\$146,737
Associate Professor	\$103,913	\$100,503	\$100,655	\$104,298	\$107,750
Assistant Professor	\$90,733	\$91,162	\$89,382	\$94,521	\$103,676
Ranked Tenure-Track Faculty Total	\$115,352	\$112,968	\$113,062	\$117,838	\$124,251

¹Due to recent changes in Faculty classification, in addition to ensuring reporting consistency across historical data, beginning 2019, this Fact Book page was modified to reflect Tenure-Track Faculty only.

²Salaries are adjusted to full time equivalent but 12-month salaries are not converted to nine-month equivalents.

³Twelve-month salaries are converted to nine-month equivalents using a 9/11 conversion factor.

Average Tenure-Track Faculty Salaries by Rank



Note: salaries are 9-month full-time equivalent salaries.

Office of Institutional Research (Data Source: e-Data Warehouse and Workday HCM & Finance)

Last updated 1/4/2023