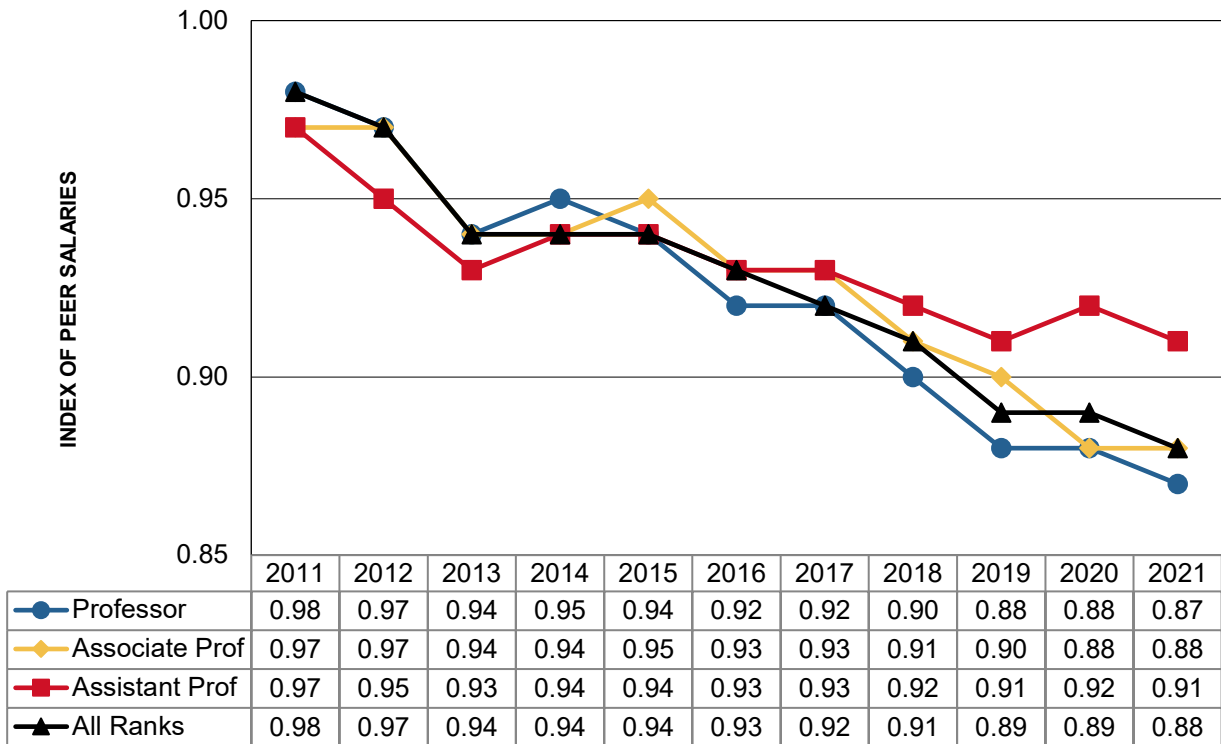


Tenure-Track Faculty Salaries: Peer Comparisons^{1,2}



¹ The index compares ISU tenure-track faculty salaries with peer institutions. A value of 1.00 means ISU faculty pay is equivalent to our peer institutions. Appointments with titles equivalent to Assistant Dean, Associate Dean, Dean or higher are excluded.

² Salaries on this page are reported by fiscal year, not academic year.

Index by College	FY2017	FY2018	FY2019	FY2020	FY2021
Agriculture and Life Sciences	0.96	0.97	0.91	0.91	0.90
Business	0.85	0.87	0.88	0.86	0.86
Design	0.92	0.92	0.89	0.90	0.87
Engineering	1.00	0.98	0.95	0.95	0.95
Human Sciences	0.93	0.91	0.89	0.87	0.85
Liberal Arts and Sciences	0.86	0.84	0.84	0.84	0.83
Veterinary Medicine	1.02	0.96	0.96	0.95	0.96

For a more detailed report of peer salaries, visit this site:

<https://www.ir.iastate.edu/reports/faculty>

For a list of our peer institutions, visit this site:

<https://www.ir.iastate.edu/resources/peer-universities>

Office of Institutional Research

Last updated: 12/7/2021