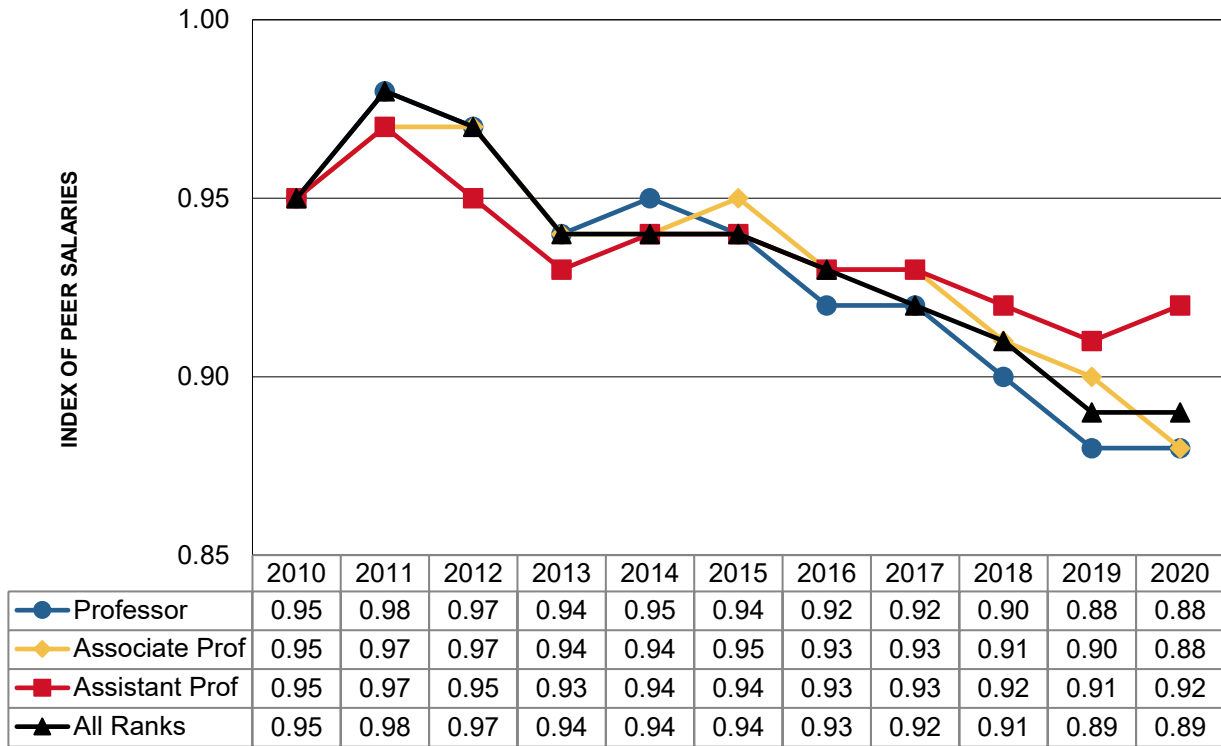


## Tenure-Track Faculty Salaries: Peer Comparisons<sup>1,2</sup>



<sup>1</sup> The index compares ISU tenure-track faculty salaries with peer institutions. A value of 1.00 means ISU faculty pay is equivalent to our peer institutions. Appointments with titles equivalent to Assistant Dean, Associate Dean, Dean or higher are excluded.

<sup>2</sup> Salaries on this page are reported by fiscal year, not academic year.

Index by College	FY2016	FY2017	FY2018	FY2019	FY2020
<b>Agriculture and Life Sciences</b>	0.95	0.96	0.97	0.91	0.91
<b>Business</b>	0.83	0.85	0.87	0.88	0.86
<b>Design</b>	0.95	0.92	0.92	0.89	0.90
<b>Engineering</b>	1.00	1.00	0.98	0.95	0.95
<b>Human Sciences</b>	0.96	0.93	0.91	0.89	0.87
<b>Liberal Arts and Sciences</b>	0.87	0.86	0.84	0.84	0.84
<b>Veterinary Medicine</b>	1.01	1.02	0.96	0.96	0.95

For a more detailed report of peer salaries, visit this site:  
<https://www.ir.iastate.edu/reports/faculty>

For a list of our peer institutions, visit this site:  
<https://www.ir.iastate.edu/resources/peer-universities>