

IOWA STATE UNIVERSITY

OF SCIENCE AND TECHNOLOGY

Peer Land Grant Universities Faculty Salary Comparisons 2009-2010 through 2019-2020

Institutional Research Report 2020

April 1, 2020

Office of Institutional Research

2420 Lincoln Way, Suite 203 Ames, IA

50014-8340

Phone 515 294-1181

Fax 515 294-4835

E-mail ir@iastate.edu

**Iowa State University
Peer Land Grant Universities Faculty Salary Comparisons
2009-2010 through 2019-2020**

Table of Contents

| | |
|---|----|
| Introduction..... | i |
| College Summary Data..... | 1 |
| Department Data within College | |
| College of Agriculture and Life Sciences..... | 6 |
| College of Business..... | 11 |
| College of Design..... | 14 |
| College of Engineering..... | 16 |
| College of Human Sciences..... | 19 |
| College of Liberal Arts and Sciences | |
| Humanities..... | 22 |
| Science and Mathematics..... | 25 |
| Social Sciences..... | 29 |
| College Total..... | 31 |
| College of Veterinary Medicine..... | 32 |
| University Summary..... | 33 |
| Footnotes | 34 |

Introduction

Iowa State University Peer Land Grant Universities Faculty Salary Comparisons 2009-2010 through 2019-2020

INTRODUCTION

This report compares Iowa State University's average nine-month tenure-track faculty salaries to those of the peer land grant universities for the academic years 2009-2010 through 2019-2020. The report is organized into three sections: summary data for the colleges with the College of Liberal Arts and Sciences broken down into three divisions; departmental data within each college; and footnotes.

All twelve-month salaries have been converted to nine-month equivalents for comparison purposes. The complete methodology used in the comparisons is described on page iii.

DISCUSSION

The 2019-2020 average nine-month salaries and comparative indices by faculty rank for the total university are:

| Faculty Rank | Average Salary | Comparative Index |
|---------------------|----------------|-------------------|
| Professor | \$133,592 | 0.88 |
| Associate Professor | \$100,345 | 0.88 |
| Assistant Professor | \$91,089 | 0.92 |
| All Ranks | \$111,886 | 0.89 |

Figure 1 and Figure 2 display the total university average salaries and indices by rank from 2009-2010 through 2019-2020.

Figure 1. Iowa State University Average Faculty Salaries by Rank

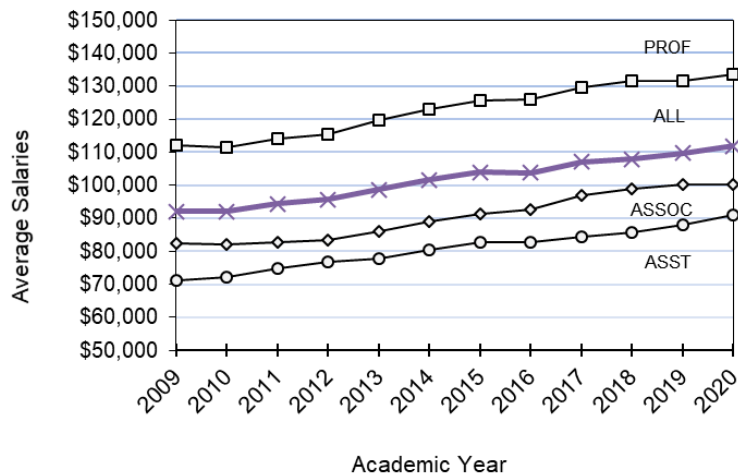
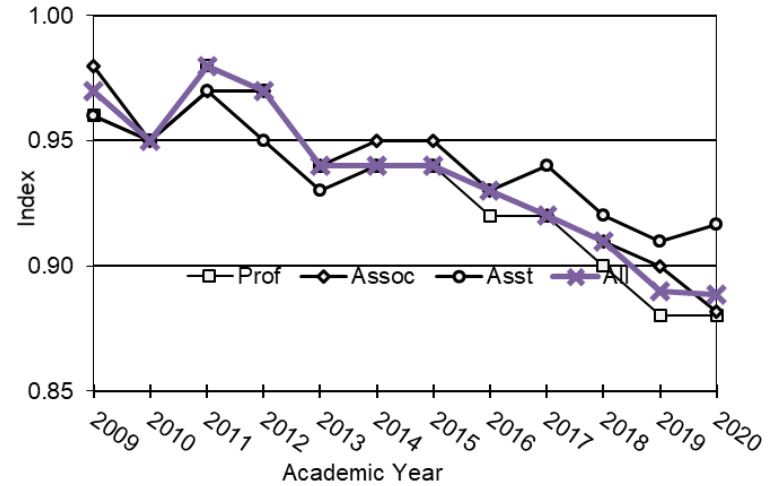


Figure 2. Index of Iowa State University Average Faculty Salaries Compared With Those of the Peers



From 2009-2010 through 2019-2020 the indices for *all ranks combined* range from 0.98 in 2010-2011 to 0.89 in 2018-2019 and 2019-2020. During this time the average percent increases in salaries for continuing faculty range from 0.0% in 2009 and 2017 to 3.8% in 2016-2017. The following table presents for each year the comparative index and the average percent increase in salaries for continuing faculty at Iowa State University.

| Academic Year | Comparative Index | Average % Increase for Continuing Faculty |
|---------------|-------------------|---|
| 2009-2010 | 0.95 | 0.0% |
| 2010-2011 | 0.98 | 1.9% |
| 2011-2012 | 0.97 | 2.3% |
| 2012-2013 | 0.94 | 2.4% |
| 2013-2014 | 0.94 | 3.2% |
| 2014-2015 | 0.94 | 3.5% |
| 2015-2016 | 0.93 | 1.4% |
| 2016-2017 | 0.92 | 3.8% |
| 2017-2018 | 0.91 | 0.0% |
| 2018-2019 | 0.89 | 1.0% |
| 2019-2020 | 0.89 | 3.3% |

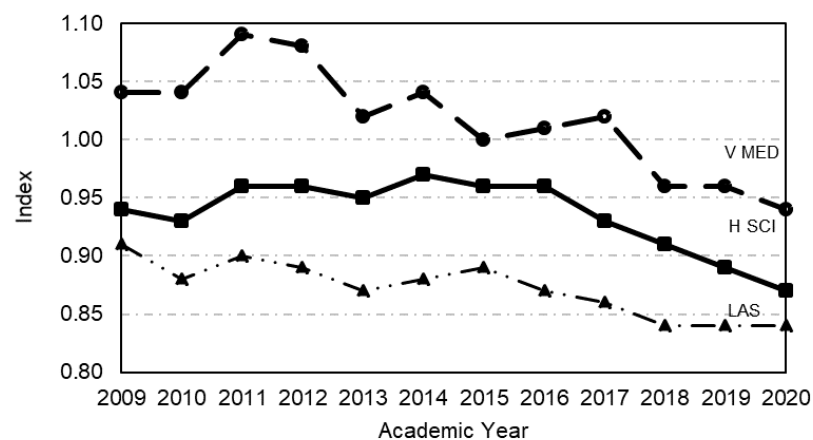
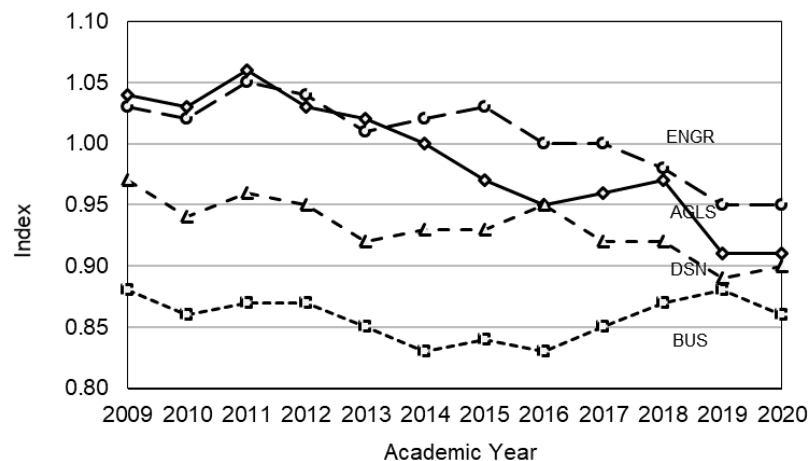
Iowa State University Peer Land Grant Universities Faculty Salary Comparisons 2009-2010 through 2019-2020

By college, the 2019-2020 indices for the Professor rank range from 0.73 in the College of Liberal Arts and Sciences (Social Sciences) to 0.98 in the College Engineering. Indices for Associate Professors range from 0.77 in the College of Liberal Arts and Sciences (Social Sciences) to 0.94 in the College of Design. Assistant Professor indices range from 0.86 in the College of Liberal Arts and Sciences (Social Sciences) to 0.99 in the College of Veterinary Medicine. The 2019-2020 average nine-month salaries and indices for each college and the three divisions within Liberal Arts and Sciences are as follows:

| | Professor | Associate Professor | Assistant Professor |
|--|------------------|----------------------------|----------------------------|
| Agriculture & Life Sciences | | | |
| Average Salary | \$125,912 | \$95,113 | \$85,675 |
| Comparative Index | 0.90 | 0.92 | 0.94 |
| Business | | | |
| Average Salary | \$198,379 | \$168,381 | \$162,314 |
| Comparative Index | 0.79 | 0.84 | 0.92 |
| Design | | | |
| Average Salary | \$106,306 | \$85,212 | \$67,566 |
| Comparative Index | 0.86 | 0.94 | 0.88 |
| Engineering | | | |
| Average Salary | \$163,718 | \$109,684 | \$94,225 |
| Comparative Index | 0.98 | 0.92 | 0.93 |
| Human Sciences | | | |
| Average Salary | \$117,314 | \$88,641 | \$75,594 |
| Comparative Index | 0.84 | 0.87 | 0.91 |
| Liberal Arts and Sciences | | | |
| Humanities | | | |
| Average Salary | \$104,881 | \$76,927 | \$67,598 |
| Comparative Index | 0.81 | 0.84 | 0.88 |
| Science and Mathematics | | | |
| Average Salary | \$131,372 | \$96,020 | \$87,753 |
| Comparative Index | 0.85 | 0.87 | 0.89 |
| Social Sciences | | | |
| Average Salary | \$125,863 | \$89,794 | \$90,378 |
| Comparative Index | 0.73 | 0.77 | 0.86 |
| All Divisions | | | |
| Average Salary | \$125,455 | \$86,331 | \$81,722 |
| Comparative Index | 0.82 | 0.84 | 0.88 |
| Veterinary Medicine | | | |
| Average Salary | \$141,627 | \$111,613 | \$103,468 |
| Comparative Index | 0.94 | 0.92 | 0.99 |
| All Colleges | | | |
| Average Salary | \$133,592 | \$100,345 | \$91,089 |
| Comparative Index | 0.88 | 0.88 | 0.92 |

The college indices for all ranks combined are shown below.

Figures 3 and 4. Index by College of Iowa State University Average Faculty Salaries Compared with Those of Peers.



Iowa State University Peer Land Grant Universities Faculty Salary Comparisons 2009-2010 through 2019-2020

METHODOLOGY

The data used for the salary comparisons are collected through the Association of American Universities Data Exchange (AAUDE) and the Oklahoma State University *Faculty Salary Survey by Discipline*.

The peer land grant universities are:

| | |
|---------------------------------|---------------------------------|
| University of California–Davis | Ohio State University |
| University of Illinois–Urbana | Pennsylvania State University |
| Michigan State University | Purdue University |
| University of Minnesota | Texas A&M University |
| North Carolina State University | University of Wisconsin–Madison |

Disciplines are identified by a set of codes (Classification of Instruction - CIP codes) developed by the National Center for Education Statistics to provide a standard means of describing instructional programs. The university providing the data assigns a code to each discipline. In some cases an institution may use a slightly different CIP code to describe a similar program. In those cases the CIP most closely aligned to the Iowa State codes may be used. In other cases an institution may use more than one code to align with our code. For example, the peer data for Music and Theater may be reported separately by some institutions. In those cases the data for the two CIP codes are averaged to create comparison data for Iowa State's Department of Music and Theater.

Faculty included are full-time equivalent, tenured and tenure-eligible faculty, holding the traditional three faculty ranks. Excluded are faculty on leave-without-pay and term faculty members. Faculty with appointments of Assistant Dean, Associate Dean, Dean or higher are also excluded. Department chairs are included. Twelve-month salaries for Iowa State University and the peers have been converted to nine-month equivalents using a 9/11 conversion factor. Prior to 2019-2020, the salary reported included all salary components included in the Iowa State University Budget Book. Starting in 2019-2020, to align with AAUDE definitions, the salary reported includes annual base salary and administrative increments as provided in Workday HCM; additional pay for named professorships or other non-base salary increments are excluded from the base salary comparisons.

The first department of rank determines where the salary is counted even though some faculty may have appointments in more than one department. The total full-time salary dollars are summed and divided by the headcount to calculate the average. Salaries are not reported for non-academic departments since these are not departments *of rank*.

The Iowa State University *All Ranks* salary average is the sum of the Iowa State University dollars for all ranks divided by the sum of the headcount for all ranks. For the peers, the average salary for each rank is multiplied by Iowa State's headcount for that rank. These dollars are then accumulated and divided by Iowa State's total headcount. This yields an All Ranks average for the peer universities that is based on Iowa State's mix of ranks. Similarly, the college peer averages for each rank are weighted by the headcount in each department at Iowa State to yield a college average that reflects the composition of departments within each college.

The index for each rank compares the average for Iowa State University to the average of the peer universities. For example, an average salary of \$75,000 for Iowa State University compared to a \$78,000 average for the peer universities yields an index of 0.96.

In 2016-2017 Penn State replaced Arizona as a peer institution.

Two institutions did not report their data by the time this report was prepared, so their average salary data were imputed from 2018-2019 data using a 2.0% salary increase. These institutions included Pennsylvania State University and University of California – Davis.

Data about median salaries was added to the report beginning in 2008, although some universities did not report median data. Beginning in 2013-14, all AAU institutions began providing median data. No median data is available from North Carolina State. Median salaries are weighted using the same methodology as the average salaries. For the peers, the median salary for each rank and department is multiplied by Iowa State's headcount for that rank and department. These dollars are then accumulated and divided by Iowa State's total headcount. No median data were imputed for universities with missing data.

The footnotes at the end of the report provide additional details particular to individual departments.

* * *

Questions regarding this report may be directed to the Director, Office of Institutional Research, 515-294-1181.

College Summary Data

Iowa State University
Peer Land Grant Universities Faculty Salary Comparisons
2009-2010 through 2019-2020

| COLLEGE/DEPARTMENT | 2009-2010 | 2010-2011 | 2011-2012 | 2012-2013 | 2013-2014 | 2014-2015 | 2015-2016 | 2016-2017 | 2017-2018 | 2018-2019 | 2019-2020 | | | PEER | |
|--------------------------------------|-----------|-----------|-----------|-----------|-----------|-----------|-----------|-----------|-----------|-----------|------------------------|-----------------------|-------|----------------|---------------|
| | | | | | | | | | | | ISU | | | PEER | |
| | | | | | | | | | | | AVERAGE SALARY & INDEX | MEDIAN SALARY & INDEX | COUNT | AVERAGE SALARY | MEDIAN SALARY |
| COLLEGE SUMMARIES | | | | | | | | | | | | | | | |
| AGRICULTURE AND LIFE SCIENCES | | | | | | | | | | | | | | | |
| Average Salaries | | | | | | | | | | | | | | | |
| Professor | \$106,782 | \$107,576 | \$108,040 | \$112,239 | \$116,012 | \$118,794 | \$119,360 | \$123,875 | \$125,354 | \$123,228 | \$125,912 | \$122,179 | 162 | \$139,205 | \$133,463 |
| Associate Professor | \$80,520 | \$81,565 | \$80,468 | \$83,626 | \$86,293 | \$87,010 | \$88,895 | \$90,978 | \$93,458 | \$94,104 | \$95,113 | \$95,694 | 75 | \$103,672 | \$100,869 |
| Assistant Professor | \$70,545 | \$72,899 | \$74,854 | \$77,262 | \$80,228 | \$82,229 | \$81,577 | \$83,223 | \$85,200 | \$83,834 | \$85,675 | \$84,338 | 63 | \$91,464 | \$88,508 |
| All | \$94,169 | \$96,129 | \$96,628 | \$100,117 | \$103,038 | \$104,219 | \$104,254 | \$107,079 | \$108,950 | \$107,607 | \$109,762 | \$107,611 | 300 | \$120,296 | \$115,874 |
| Index | | | | | | | | | | | | | | | |
| Professor | 1.01 | 1.05 | 1.02 | 1.00 | 0.99 | 0.96 | 0.94 | 0.95 | 0.97 | 0.90 | 0.90 | 0.92 | | | |
| Associate Professor | 1.06 | 1.09 | 1.07 | 1.07 | 1.02 | 0.99 | 0.99 | 0.95 | 0.96 | 0.91 | 0.92 | 0.95 | | | |
| Assistant Professor | 1.09 | 1.10 | 1.06 | 1.04 | 1.04 | 1.02 | 0.98 | 0.98 | 0.97 | 0.93 | 0.94 | 0.95 | | | |
| All | 1.03 | 1.06 | 1.03 | 1.02 | 1.00 | 0.97 | 0.95 | 0.96 | 0.97 | 0.91 | 0.91 | 0.93 | | | |
| BUSINESS | | | | | | | | | | | | | | | |
| Average Salaries | | | | | | | | | | | | | | | |
| Professor | \$156,476 | \$159,876 | \$163,565 | \$171,832 | \$174,570 | \$170,611 | \$174,160 | \$183,772 | \$192,670 | \$207,993 | \$198,379 | \$196,151 | 14 | \$250,729 | \$255,339 |
| Associate Professor | \$124,887 | \$127,536 | \$130,740 | \$137,047 | \$141,728 | \$145,892 | \$149,744 | \$157,085 | \$161,387 | \$167,725 | \$168,381 | \$167,414 | 36 | \$200,575 | \$205,465 |
| Assistant Professor | \$121,544 | \$123,711 | \$128,803 | \$132,787 | \$136,943 | \$144,912 | \$147,268 | \$154,718 | \$152,121 | \$155,677 | \$162,314 | \$161,401 | 31 | \$175,956 | \$178,070 |
| All | \$132,226 | \$134,626 | \$137,349 | \$144,126 | \$147,389 | \$150,190 | \$153,424 | \$161,459 | \$163,915 | \$170,768 | \$171,244 | \$170,079 | 81 | \$199,822 | \$203,601 |
| Index | | | | | | | | | | | | | | | |
| Professor | 0.85 | 0.87 | 0.86 | 0.81 | 0.82 | 0.79 | 0.75 | 0.80 | 0.82 | 0.86 | 0.79 | 0.77 | | | |
| Associate Professor | 0.88 | 0.91 | 0.93 | 0.92 | 0.87 | 0.88 | 0.87 | 0.88 | 0.89 | 0.89 | 0.84 | 0.81 | | | |
| Assistant Professor | 0.85 | 0.85 | 0.84 | 0.82 | 0.80 | 0.84 | 0.83 | 0.86 | 0.87 | 0.89 | 0.92 | 0.91 | | | |
| All | 0.86 | 0.87 | 0.87 | 0.85 | 0.83 | 0.84 | 0.83 | 0.85 | 0.87 | 0.88 | 0.86 | 0.84 | | | |
| DESIGN | | | | | | | | | | | | | | | |
| Average Salaries | | | | | | | | | | | | | | | |
| Professor | \$95,255 | \$94,991 | \$95,519 | \$98,397 | \$98,388 | \$98,696 | \$101,522 | \$97,722 | \$97,126 | \$102,369 | \$106,306 | \$108,925 | 22 | \$123,616 | \$119,317 |
| Associate Professor | \$68,795 | \$69,835 | \$69,776 | \$70,706 | \$73,764 | \$77,866 | \$78,819 | \$80,075 | \$82,572 | \$85,120 | \$85,212 | \$84,902 | 37 | \$90,623 | \$88,983 |
| Assistant Professor | \$57,176 | \$59,200 | \$59,454 | \$62,032 | \$63,712 | \$63,761 | \$63,720 | \$66,000 | \$66,605 | \$66,303 | \$67,566 | \$67,045 | 26 | \$77,029 | \$75,782 |
| All | \$71,806 | \$72,507 | \$72,962 | \$74,117 | \$76,495 | \$77,966 | \$78,998 | \$79,464 | \$79,748 | \$82,004 | \$85,274 | \$85,658 | 85 | \$95,004 | \$92,796 |
| Index | | | | | | | | | | | | | | | |
| Professor | 0.93 | 0.95 | 0.96 | 0.91 | 0.91 | 0.88 | 0.91 | 0.86 | 0.83 | 0.86 | 0.86 | 0.91 | | | |
| Associate Professor | 0.95 | 0.96 | 0.95 | 0.92 | 0.94 | 0.97 | 0.99 | 0.98 | 0.98 | 0.96 | 0.94 | 0.95 | | | |
| Assistant Professor | 0.95 | 0.98 | 0.98 | 0.94 | 0.96 | 0.93 | 0.94 | 0.93 | 0.92 | 0.87 | 0.88 | 0.88 | | | |
| All | 0.94 | 0.96 | 0.95 | 0.92 | 0.93 | 0.93 | 0.95 | 0.92 | 0.92 | 0.89 | 0.90 | 0.92 | | | |

Iowa State University
Peer Land Grant Universities Faculty Salary Comparisons
2009-2010 through 2019-2020

| COLLEGE/DEPARTMENT | 2009-2010 | 2010-2011 | 2011-2012 | 2012-2013 | 2013-2014 | 2014-2015 | 2015-2016 | 2016-2017 | 2017-2018 | 2018-2019 | 2019-2020 | | | PEER | |
|-------------------------------------|-----------|-----------|-----------|-----------|-----------|-----------|-----------|-----------|-----------|-----------|------------------------------|-----------------------------|-------|-------------------|------------------|
| | | | | | | | | | | | ISU | | | AVERAGE SALARY | MEDIAN SALARY |
| | | | | | | | | | | | AVERAGE SALARY & INDEX | MEDIAN SALARY & INDEX | COUNT | | |
| COLLEGE SUMMARIES, continued | | | | | | | | | | | | | | | |
| ENGINEERING | | | | | | | | | | | | | | | |
| Average Salaries | | | | | | | | | | | | | | | |
| Professor | \$137,806 | \$142,435 | \$145,700 | \$146,666 | \$151,319 | \$156,053 | \$153,900 | \$159,641 | \$163,176 | \$158,550 | \$163,718 | \$161,972 | 95 | \$166,987 | \$162,184 |
| Associate Professor | \$97,089 | \$98,912 | \$98,950 | \$100,191 | \$101,991 | \$103,693 | \$103,571 | \$106,442 | \$108,646 | \$108,467 | \$109,684 | \$109,308 | 69 | \$119,108 | \$118,585 |
| Assistant Professor | \$82,369 | \$84,784 | \$85,231 | \$86,748 | \$87,989 | \$88,111 | \$87,905 | \$90,714 | \$91,124 | \$91,435 | \$94,225 | \$93,580 | 51 | \$101,565 | \$99,192 |
| All | \$108,656 | \$113,424 | \$116,186 | \$118,111 | \$122,161 | \$123,663 | \$120,715 | \$124,570 | \$124,611 | \$124,007 | \$129,892 | \$128,847 | 215 | \$136,102 | \$133,250 |
| Index | | | | | | | | | | | | | | | |
| Professor | 1.03 | 1.05 | 1.06 | 1.02 | 1.04 | 1.06 | 1.04 | 1.03 | 1.00 | 0.97 | 0.98 | 1.00 | | | |
| Associate Professor | 1.02 | 1.05 | 1.01 | 0.99 | 0.98 | 0.99 | 0.97 | 0.96 | 0.96 | 0.93 | 0.92 | 0.92 | | | |
| Assistant Professor | 0.99 | 1.02 | 1.00 | 0.98 | 0.99 | 0.97 | 0.96 | 0.96 | 0.94 | 0.93 | 0.93 | 0.94 | | | |
| All | 1.02 | 1.05 | 1.04 | 1.01 | 1.02 | 1.03 | 1.00 | 1.00 | 0.98 | 0.95 | 0.95 | 0.97 | | | |
| HUMAN SCIENCES ³ | | | | | | | | | | | | | | | |
| Average Salaries | | | | | | | | | | | | | | | |
| Professor | \$99,912 | \$102,799 | \$104,783 | \$107,549 | \$112,400 | \$113,019 | \$115,951 | \$119,436 | \$123,221 | \$118,950 | \$117,314 | \$126,305 | 33 | \$139,160 | \$136,980 |
| Associate Professor | \$71,976 | \$73,615 | \$76,771 | \$77,464 | \$80,933 | \$85,149 | \$85,075 | \$86,439 | \$87,290 | \$87,678 | \$88,641 | \$85,723 | 43 | \$101,542 | \$99,144 |
| Assistant Professor | \$61,712 | \$62,005 | \$64,033 | \$66,212 | \$67,646 | \$70,096 | \$70,358 | \$73,244 | \$72,279 | \$74,355 | \$75,594 | \$75,537 | 52 | \$83,394 | \$81,973 |
| All | \$79,023 | \$79,648 | \$79,885 | \$82,381 | \$84,799 | \$86,236 | \$87,701 | \$89,331 | \$88,503 | \$89,927 | \$90,733 | \$92,047 | 128 | \$103,868 | \$101,923 |
| Index | | | | | | | | | | | | | | | |
| Professor | 0.91 | 0.95 | 0.96 | 0.96 | 0.99 | 0.93 | 0.94 | 0.91 | 0.91 | 0.86 | 0.84 | 0.92 | | | |
| Associate Professor | 0.94 | 0.97 | 0.97 | 0.95 | 0.98 | 1.00 | 0.99 | 0.95 | 0.94 | 0.90 | 0.87 | 0.86 | | | |
| Assistant Professor | 0.94 | 0.94 | 0.95 | 0.95 | 0.93 | 0.97 | 0.95 | 0.93 | 0.90 | 0.90 | 0.91 | 0.92 | | | |
| All | 0.93 | 0.96 | 0.96 | 0.95 | 0.97 | 0.96 | 0.96 | 0.93 | 0.91 | 0.89 | 0.87 | 0.90 | | | |
| LIBERAL ARTS AND SCIENCES | | | | | | | | | | | | | | | |
| HUMANITIES | | | | | | | | | | | | | | | |
| Average Salaries | | | | | | | | | | | | | | | |
| Professor | \$79,039 | \$78,582 | \$81,198 | \$84,396 | \$90,284 | \$97,514 | \$95,241 | \$99,201 | \$99,454 | \$100,994 | \$104,881 | \$107,701 | 39 | \$129,422 | \$126,080 |
| Associate Professor | \$60,318 | \$61,033 | \$61,893 | \$64,590 | \$69,721 | \$72,153 | \$72,395 | \$74,763 | \$74,519 | \$75,381 | \$76,927 | \$76,302 | 63 | \$91,059 | \$87,039 |
| Assistant Professor | \$52,559 | \$52,950 | \$53,744 | \$55,302 | \$58,503 | \$60,990 | \$61,257 | \$64,124 | \$63,882 | \$65,249 | \$67,598 | \$67,163 | 35 | \$76,973 | \$75,119 |
| All | \$63,605 | \$64,096 | \$65,030 | \$66,431 | \$71,104 | \$74,945 | \$74,057 | \$77,813 | \$78,022 | \$79,195 | \$82,502 | \$82,906 | 137 | \$98,381 | \$95,107 |
| Index | | | | | | | | | | | | | | | |
| Professor | 0.77 | 0.77 | 0.78 | 0.77 | 0.82 | 0.87 | 0.82 | 0.82 | 0.79 | 0.82 | 0.81 | 0.85 | | | |
| Associate Professor | 0.84 | 0.86 | 0.85 | 0.85 | 0.91 | 0.92 | 0.89 | 0.89 | 0.87 | 0.86 | 0.84 | 0.88 | | | |
| Assistant Professor | 0.86 | 0.89 | 0.89 | 0.87 | 0.90 | 0.90 | 0.88 | 0.89 | 0.86 | 0.88 | 0.88 | 0.89 | | | |
| All | 0.82 | 0.83 | 0.83 | 0.83 | 0.88 | 0.90 | 0.87 | 0.87 | 0.84 | 0.85 | 0.84 | 0.87 | | | |

Iowa State University
Peer Land Grant Universities Faculty Salary Comparisons
2009-2010 through 2019-2020

| COLLEGE/DEPARTMENT | 2009-2010 | 2010-2011 | 2011-2012 | 2012-2013 | 2013-2014 | 2014-2015 | 2015-2016 | 2016-2017 | 2017-2018 | 2018-2019 | 2019-2020 | | | PEER | | |
|-------------------------------------|-----------|-----------|-----------|-----------|-----------|-----------|-----------|-----------|-----------|-----------|------------------------|-----------------------|-----|-----------|----------------|---------------|
| | | | | | | | | | | | ISU | | | COUNT | AVERAGE SALARY | MEDIAN SALARY |
| | | | | | | | | | | | AVERAGE SALARY & INDEX | MEDIAN SALARY & INDEX | | | | |
| COLLEGE SUMMARIES, continued | | | | | | | | | | | | | | | | |
| SCIENCE AND MATHEMATICS | | | | | | | | | | | | | | | | |
| Average Salaries | | | | | | | | | | | | | | | | |
| Professor | \$111,080 | \$112,959 | \$113,549 | \$116,076 | \$117,180 | \$121,879 | \$122,841 | \$126,524 | \$126,238 | \$128,617 | \$131,372 | \$129,662 | 133 | \$154,442 | \$150,009 | |
| Associate Professor | \$79,532 | \$79,952 | \$81,925 | \$83,606 | \$85,483 | \$88,443 | \$89,266 | \$91,713 | \$92,870 | \$94,329 | \$96,020 | \$94,908 | 54 | \$110,909 | \$109,652 | |
| Assistant Professor | \$71,900 | \$71,973 | \$71,364 | \$72,632 | \$75,050 | \$77,751 | \$79,146 | \$81,786 | \$82,567 | \$85,789 | \$87,753 | \$87,155 | 59 | \$98,427 | \$95,798 | |
| All | \$95,463 | \$96,729 | \$97,272 | \$99,410 | \$101,672 | \$104,801 | \$104,418 | \$107,875 | \$108,578 | \$110,891 | \$113,150 | \$111,838 | 246 | \$131,451 | \$128,148 | |
| Index | | | | | | | | | | | | | | | | |
| Professor | 0.91 | 0.94 | 0.92 | 0.89 | 0.88 | 0.89 | 0.88 | 0.86 | 0.85 | 0.84 | 0.85 | 0.86 | | | | |
| Associate Professor | 0.92 | 0.93 | 0.93 | 0.90 | 0.90 | 0.92 | 0.90 | 0.90 | 0.88 | 0.89 | 0.87 | 0.87 | | | | |
| Assistant Professor | 0.97 | 0.97 | 0.96 | 0.93 | 0.96 | 0.93 | 0.92 | 0.93 | 0.90 | 0.90 | 0.89 | 0.91 | | | | |
| All | 0.92 | 0.94 | 0.93 | 0.90 | 0.89 | 0.90 | 0.89 | 0.88 | 0.86 | 0.86 | 0.86 | 0.87 | | | | |
| SOCIAL SCIENCES | | | | | | | | | | | | | | | | |
| Average Salaries | | | | | | | | | | | | | | | | |
| Professor | \$115,002 | \$117,194 | \$116,208 | \$121,640 | \$121,096 | \$120,999 | \$123,025 | \$124,687 | \$127,449 | \$125,495 | \$125,863 | \$117,399 | 38 | \$172,363 | \$172,769 | |
| Associate Professor | \$79,865 | \$79,749 | \$80,964 | \$81,757 | \$80,926 | \$83,669 | \$84,795 | \$87,079 | \$85,746 | \$87,481 | \$89,794 | \$88,067 | 20 | \$116,185 | \$114,497 | |
| Assistant Professor | \$60,400 | \$62,003 | \$62,399 | \$63,946 | \$67,155 | \$71,912 | \$75,237 | \$78,270 | \$79,945 | \$82,460 | \$90,378 | \$89,300 | 16 | \$104,899 | \$103,657 | |
| All | \$81,601 | \$84,833 | \$88,111 | \$92,573 | \$94,602 | \$99,004 | \$99,750 | \$101,933 | \$105,191 | \$106,169 | \$108,442 | \$103,396 | 74 | \$142,593 | \$142,077 | |
| Index | | | | | | | | | | | | | | | | |
| Professor | 0.87 | 0.85 | 0.84 | 0.83 | 0.82 | 0.83 | 0.79 | 0.78 | 0.77 | 0.76 | 0.73 | 0.68 | | | | |
| Associate Professor | 0.89 | 0.89 | 0.88 | 0.85 | 0.83 | 0.84 | 0.81 | 0.79 | 0.74 | 0.77 | 0.77 | 0.77 | | | | |
| Assistant Professor | 0.85 | 0.87 | 0.87 | 0.85 | 0.85 | 0.88 | 0.87 | 0.88 | 0.84 | 0.86 | 0.86 | 0.86 | | | | |
| All | 0.87 | 0.87 | 0.86 | 0.84 | 0.83 | 0.84 | 0.81 | 0.80 | 0.77 | 0.78 | 0.76 | 0.73 | | | | |
| LIBERAL ARTS AND SCIENCES | | | | | | | | | | | | | | | | |
| Average Salaries | | | | | | | | | | | | | | | | |
| Professor | \$103,687 | \$105,720 | \$107,218 | \$111,137 | \$113,119 | \$117,556 | \$118,230 | \$121,261 | \$120,978 | \$123,482 | \$125,455 | \$123,365 | 210 | \$153,038 | \$149,683 | |
| Associate Professor | \$72,702 | \$73,073 | \$74,076 | \$76,165 | \$78,652 | \$81,840 | \$82,226 | \$84,623 | \$83,253 | \$84,144 | \$86,331 | \$85,353 | 137 | \$102,551 | \$99,961 | |
| Assistant Professor | \$61,607 | \$62,460 | \$62,523 | \$63,374 | \$66,053 | \$69,333 | \$71,352 | \$74,365 | \$74,711 | \$78,893 | \$81,722 | \$81,106 | 110 | \$92,542 | \$90,361 | |
| All | \$82,804 | \$84,579 | \$85,727 | \$88,046 | \$91,057 | \$95,041 | \$94,718 | \$98,085 | \$97,825 | \$100,588 | \$103,200 | \$101,798 | 457 | \$123,342 | \$120,499 | |
| Index | | | | | | | | | | | | | | | | |
| Professor | 0.87 | 0.89 | 0.88 | 0.86 | 0.86 | 0.88 | 0.86 | 0.84 | 0.82 | 0.82 | 0.82 | 0.82 | | | | |
| Associate Professor | 0.89 | 0.90 | 0.89 | 0.87 | 0.89 | 0.90 | 0.88 | 0.87 | 0.85 | 0.86 | 0.84 | 0.85 | | | | |
| Assistant Professor | 0.91 | 0.92 | 0.91 | 0.89 | 0.91 | 0.91 | 0.90 | 0.91 | 0.88 | 0.89 | 0.88 | 0.90 | | | | |
| All | 0.88 | 0.90 | 0.89 | 0.87 | 0.88 | 0.89 | 0.87 | 0.86 | 0.84 | 0.84 | 0.84 | 0.84 | | | | |

Iowa State University
Peer Land Grant Universities Faculty Salary Comparisons
2009-2010 through 2019-2020

| COLLEGE/DEPARTMENT | 2009-2010 | 2010-2011 | 2011-2012 | 2012-2013 | 2013-2014 | 2014-2015 | 2015-2016 | 2016-2017 | 2017-2018 | 2018-2019 | 2019-2020 | | | PEER | | |
|-------------------------------------|-----------|-----------|-----------|-----------|-----------|-----------|-----------|-----------|-----------|-----------|------------------------|-----------------------|----|-----------|----------------|---------------|
| | | | | | | | | | | | ISU | | | COUNT | AVERAGE SALARY | MEDIAN SALARY |
| | | | | | | | | | | | AVERAGE SALARY & INDEX | MEDIAN SALARY & INDEX | | | | |
| COLLEGE SUMMARIES, continued | | | | | | | | | | | | | | | | |
| VETERINARY MEDICINE | | | | | | | | | | | | | | | | |
| Average Salaries | | | | | | | | | | | | | | | | |
| Professor | \$120,425 | \$122,756 | \$121,724 | \$126,092 | \$127,321 | \$128,753 | \$132,319 | \$136,497 | \$136,506 | \$140,661 | \$141,627 | \$133,477 | 40 | \$151,112 | \$141,889 | |
| Associate Professor | \$93,538 | \$93,976 | \$94,363 | \$95,374 | \$96,985 | \$99,127 | \$100,499 | \$106,573 | \$107,530 | \$110,797 | \$111,613 | \$110,042 | 25 | \$121,457 | \$117,621 | |
| Assistant Professor | \$81,890 | \$84,321 | \$85,450 | \$89,904 | \$91,762 | \$94,080 | \$95,704 | \$97,744 | \$97,743 | \$99,008 | \$103,468 | \$98,019 | 34 | \$104,799 | \$103,209 | |
| All | \$101,303 | \$103,553 | \$103,440 | \$107,182 | \$108,296 | \$109,670 | \$112,144 | \$115,941 | \$116,452 | \$119,033 | \$120,943 | \$115,382 | 99 | \$127,718 | \$122,477 | |
| Index | | | | | | | | | | | | | | | | |
| Professor | 1.05 | 1.11 | 1.09 | 1.04 | 1.05 | 1.00 | 1.01 | 1.01 | 0.94 | 0.94 | 0.94 | 0.94 | | | | |
| Associate Professor | 1.04 | 1.07 | 1.07 | 0.97 | 0.99 | 0.96 | 0.95 | 0.98 | 0.96 | 0.96 | 0.92 | 0.94 | | | | |
| Assistant Professor | 1.02 | 1.09 | 1.07 | 1.06 | 1.10 | 1.06 | 1.09 | 1.07 | 1.02 | 1.00 | 0.99 | 0.95 | | | | |
| All | 1.04 | 1.09 | 1.08 | 1.02 | 1.04 | 1.00 | 1.01 | 1.02 | 0.96 | 0.96 | 0.95 | 0.94 | | | | |

Iowa State University
Peer Land Grant Universities Faculty Salary Comparisons
2009-2010 through 2019-2020

| COLLEGE/DEPARTMENT | 2009-2010 | 2010-2011 | 2011-2012 | 2012-2013 | 2013-2014 | 2014-2015 | 2015-2016 | 2016-2017 | 2017-2018 | 2018-2019 | 2019-2020 | | | PEER | |
|---------------------------|-----------|-----------|-----------|-----------|-----------|-----------|-----------|-----------|-----------|-----------|------------------------------|-----------------------------|-------|-------------------|------------------|
| | | | | | | | | | | | ISU | | | AVERAGE SALARY | MEDIAN SALARY |
| | | | | | | | | | | | AVERAGE SALARY & INDEX | MEDIAN SALARY & INDEX | COUNT | | |
| UNIVERSITY SUMMARY | | | | | | | | | | | | | | | |
| Average Salaries | | | | | | | | | | | | | | | |
| Professor | \$111,444 | \$113,945 | \$115,564 | \$119,829 | \$122,850 | \$125,475 | \$125,963 | \$129,753 | \$131,417 | \$131,478 | \$133,592 | \$131,487 | 576 | \$151,770 | \$147,322 |
| Associate Professor | \$82,058 | \$82,575 | \$83,273 | \$85,918 | \$88,880 | \$91,462 | \$92,629 | \$96,870 | \$98,853 | \$100,105 | \$100,345 | \$99,569 | 422 | \$113,791 | \$112,168 |
| Assistant Professor | \$72,086 | \$74,943 | \$76,761 | \$77,801 | \$80,302 | \$82,819 | \$82,865 | \$84,437 | \$85,588 | \$88,009 | \$91,089 | \$89,958 | 367 | \$99,397 | \$97,648 |
| All | \$92,016 | \$94,376 | \$95,708 | \$98,673 | \$101,644 | \$103,863 | \$103,738 | \$107,060 | \$107,940 | \$109,689 | \$111,886 | \$110,454 | 1,365 | \$125,947 | \$123,098 |
| Index | | | | | | | | | | | | | | | |
| Professor | 0.95 | 0.98 | 0.97 | 0.94 | 0.95 | 0.94 | 0.92 | 0.92 | 0.90 | 0.88 | 0.88 | 0.89 | | | |
| Associate Professor | 0.95 | 0.97 | 0.97 | 0.94 | 0.94 | 0.95 | 0.93 | 0.92 | 0.91 | 0.90 | 0.88 | 0.89 | | | |
| Assistant Professor | 0.95 | 0.97 | 0.95 | 0.93 | 0.94 | 0.94 | 0.93 | 0.94 | 0.92 | 0.91 | 0.92 | 0.92 | | | |
| All | 0.95 | 0.98 | 0.97 | 0.94 | 0.94 | 0.94 | 0.93 | 0.92 | 0.91 | 0.89 | 0.89 | 0.90 | | | |

Department Data within College

Iowa State University
Peer Land Grant Universities Faculty Salary Comparisons
2009-2010 through 2019-2020

| COLLEGE/DEPARTMENT | 2009-2010 | 2010-2011 | 2011-2012 | 2012-2013 | 2013-2014 | 2014-2015 | 2015-2016 | 2016-2017 | 2017-2018 | 2018-2019 | 2019-2020 | | | PEER | | |
|---|-----------|-----------|-----------|-----------|-----------|-----------|-----------|-----------|-----------|-----------|------------------------|-----------------------|----|-----------|----------------|---------------|
| | | | | | | | | | | | ISU | | | COUNT | AVERAGE SALARY | MEDIAN SALARY |
| | | | | | | | | | | | AVERAGE SALARY & INDEX | MEDIAN SALARY & INDEX | | | | |
| COLLEGE OF AGRICULTURE AND LIFE SCIENCE | | | | | | | | | | | | | | | | |
| AGRICULTURAL AND BIOSYSTEMS ENGINEERING ^{1,2} | | | | | | | | | | | | | | | | |
| Average Salaries | | | | | | | | | | | | | | | | |
| Professor | \$115,797 | \$121,862 | \$114,768 | \$122,108 | \$124,379 | \$136,185 | \$136,513 | \$142,246 | \$133,366 | \$139,583 | \$151,981 | \$160,024 | 15 | \$146,753 | \$139,537 | |
| Associate Professor | \$ 87,757 | \$87,829 | \$88,756 | \$90,780 | \$95,180 | \$95,349 | \$96,570 | \$99,846 | \$97,809 | \$96,950 | \$99,489 | \$108,906 | 9 | \$110,081 | \$105,684 | |
| Assistant Professor | \$ 77,232 | \$78,340 | \$82,421 | \$84,233 | \$83,092 | \$84,334 | \$83,418 | \$85,696 | \$84,104 | \$86,024 | \$88,737 | \$88,737 | 4 | \$94,613 | \$89,792 | |
| All | \$96,842 | \$99,496 | \$97,833 | \$101,616 | \$104,503 | \$113,379 | \$112,208 | \$117,875 | \$114,573 | \$116,316 | \$126,074 | \$133,409 | 28 | \$127,517 | \$121,549 | |
| Index | | | | | | | | | | | | | | | | |
| Professor | 1.05 | 1.13 | 1.01 | 1.01 | 0.99 | 1.04 | 1.05 | 1.02 | 0.94 | 0.96 | 1.04 | 1.15 | | | | |
| Associate Professor | 1.07 | 1.04 | 1.03 | 1.01 | 1.05 | 1.01 | 1.00 | 0.96 | 0.91 | 0.90 | 0.90 | 1.03 | | | | |
| Assistant Professor | 1.03 | 1.09 | 1.11 | 1.08 | 1.00 | 0.99 | 0.97 | 1.00 | 0.94 | 0.95 | 0.94 | 0.99 | | | | |
| All | 1.05 | 1.09 | 1.03 | 1.02 | 1.02 | 1.02 | 1.02 | 1.00 | 0.93 | 0.94 | 0.99 | 1.10 | | | | |
| AGRICULTURAL EDUCATION AND STUDIES | | | | | | | | | | | | | | | | |
| Average Salaries | | | | | | | | | | | | | | | | |
| Professor | \$97,756 | \$99,214 | \$100,671 | \$103,928 | \$106,587 | \$109,238 | \$110,310 | \$118,469 | \$122,623 | \$123,850 | \$126,327 | \$130,803 | 3 | \$125,641 | \$127,322 | |
| Associate Professor | \$87,256 | \$84,928 | \$88,734 | \$90,445 | \$91,824 | \$103,282 | \$102,692 | | \$85,000 | \$85,850 | \$85,349 | \$85,349 | 2 | \$91,598 | \$90,295 | |
| Assistant Professor | \$73,825 | \$75,718 | \$75,831 | \$81,174 | \$78,016 | \$81,302 | \$77,836 | \$73,275 | \$69,688 | \$70,572 | \$69,796 | \$69,796 | 2 | \$80,841 | \$79,173 | |
| All | \$84,787 | \$84,609 | \$84,951 | \$90,782 | \$92,142 | \$97,273 | \$94,184 | \$99,100 | \$91,453 | \$92,461 | \$98,467 | \$100,385 | 7 | \$103,115 | \$102,986 | |
| Index | | | | | | | | | | | | | | | | |
| Professor | 0.95 | 0.99 | 1.01 | 0.96 | 1.00 | 0.94 | 0.96 | 1.00 | 1.01 | 0.98 | 1.01 | 1.03 | | | | |
| Associate Professor | 1.13 | 1.11 | 1.20 | 1.19 | 1.19 | 1.26 | 1.30 | | 0.98 | 0.97 | 0.93 | 0.95 | | | | |
| Assistant Professor | 1.17 | 1.30 | 1.28 | 1.25 | 1.12 | 1.18 | 1.08 | 0.96 | 0.89 | 0.88 | 0.86 | 0.88 | | | | |
| All | 1.07 | 1.14 | 1.16 | 1.12 | 1.09 | 1.08 | 1.07 | 0.98 | 0.96 | 0.94 | 0.95 | 0.97 | | | | |
| AGRONOMY | | | | | | | | | | | | | | | | |
| Average Salaries | | | | | | | | | | | | | | | | |
| Professor | \$102,214 | \$104,656 | \$103,667 | \$104,648 | \$108,605 | \$113,637 | \$113,807 | \$118,806 | \$118,363 | \$118,363 | \$120,081 | \$112,891 | 25 | \$128,607 | \$127,755 | |
| Associate Professor | \$74,079 | \$73,349 | \$75,379 | \$79,279 | \$87,346 | \$96,530 | \$100,120 | \$103,448 | \$109,021 | \$109,021 | \$111,204 | \$109,455 | 6 | \$99,171 | \$99,180 | |
| Assistant Professor | \$75,987 | \$83,250 | \$85,217 | \$88,836 | \$95,259 | \$93,000 | \$89,749 | \$89,439 | \$91,510 | \$91,510 | \$90,684 | \$87,990 | 4 | \$87,000 | \$88,677 | |
| All | \$94,671 | \$97,883 | \$98,132 | \$100,122 | \$103,979 | \$108,444 | \$108,536 | \$112,208 | \$112,881 | \$113,472 | \$115,200 | \$109,456 | 35 | \$118,806 | \$118,390 | |
| Index | | | | | | | | | | | | | | | | |
| Professor | 1.00 | 1.05 | 1.00 | 0.95 | 0.98 | 0.96 | 0.97 | 1.05 | 1.02 | 0.97 | 0.93 | 0.88 | | | | |
| Associate Professor | 0.99 | 0.96 | 0.95 | 0.97 | 1.04 | 1.10 | 1.13 | 1.13 | 1.16 | 1.14 | 1.12 | 1.10 | | | | |
| Assistant Professor | 1.17 | 1.20 | 1.21 | 1.20 | 1.23 | 1.19 | 1.13 | 1.09 | 1.05 | 1.10 | 1.04 | 0.99 | | | | |
| All | 1.01 | 1.05 | 1.01 | 0.97 | 1.01 | 1.00 | 1.01 | 1.06 | 1.04 | 1.00 | 0.97 | 0.92 | | | | |

Iowa State University
Peer Land Grant Universities Faculty Salary Comparisons
2009-2010 through 2019-2020

| COLLEGE/DEPARTMENT | 2009-2010 | 2010-2011 | 2011-2012 | 2012-2013 | 2013-2014 | 2014-2015 | 2015-2016 | 2016-2017 | 2017-2018 | 2018-2019 | 2019-2020 | | | PEER | |
|---|-----------|-----------|-----------|-----------|-----------|-----------|-----------|-----------|-----------|-----------|------------------------------|-----------------------------|-------|-------------------|------------------|
| | | | | | | | | | | | ISU | | | AVERAGE SALARY | MEDIAN SALARY |
| | | | | | | | | | | | AVERAGE SALARY & INDEX | MEDIAN SALARY & INDEX | COUNT | | |
| COLLEGE OF AGRICULTURE & LIFE SCIENCES, continued | | | | | | | | | | | | | | | |
| ANIMAL SCIENCE | | | | | | | | | | | | | | | |
| Average Salaries | | | | | | | | | | | | | | | |
| Professor | \$102,549 | \$104,603 | \$105,270 | \$111,631 | \$112,009 | \$116,091 | \$116,307 | \$122,025 | \$118,075 | \$117,893 | \$121,332 | \$123,662 | 23 | \$129,744 | \$117,310 |
| Associate Professor | \$79,187 | \$75,336 | \$76,354 | \$78,580 | \$82,550 | \$83,009 | \$87,457 | \$89,579 | \$89,579 | \$92,240 | \$87,831 | \$90,861 | 7 | \$98,147 | \$96,348 |
| Assistant Professor | \$69,703 | \$72,099 | \$75,030 | \$78,286 | \$78,696 | \$80,068 | \$81,597 | \$83,471 | \$85,896 | \$85,427 | \$86,856 | \$84,615 | 10 | \$89,461 | \$87,056 |
| All | \$93,278 | \$94,584 | \$95,466 | \$99,633 | \$101,092 | \$105,298 | \$105,268 | \$109,242 | \$103,437 | \$103,453 | \$106,850 | \$108,160 | 40 | \$114,144 | \$106,078 |
| Index | | | | | | | | | | | | | | | |
| Professor | 0.99 | 1.04 | 1.02 | 1.04 | 1.01 | 1.02 | 0.98 | 1.02 | 1.00 | 0.97 | 0.94 | 1.05 | | | |
| Associate Professor | 1.02 | 0.97 | 0.99 | 0.99 | 1.04 | 1.01 | 1.00 | 1.01 | 0.97 | 0.89 | 0.89 | 0.94 | | | |
| Assistant Professor | 1.08 | 1.06 | 1.08 | 1.05 | 1.03 | 1.03 | 1.04 | 1.02 | 1.02 | 0.92 | 0.97 | 0.97 | | | |
| All | 1.00 | 1.03 | 1.02 | 1.03 | 1.01 | 1.02 | 0.99 | 1.02 | 1.00 | 0.94 | 0.94 | 1.02 | | | |
| BIOCHEMISTRY, BIOPHYSICS, AND MOLECULAR BIOLOGY ¹ | | | | | | | | | | | | | | | |
| Average Salaries | | | | | | | | | | | | | | | |
| Professor | \$113,629 | \$115,670 | \$117,372 | \$122,444 | \$126,957 | \$129,393 | \$130,684 | \$137,825 | \$145,026 | \$138,402 | \$141,718 | \$134,654 | 16 | \$146,990 | \$143,501 |
| Associate Professor | \$79,749 | \$79,749 | \$80,945 | \$82,766 | \$83,759 | \$82,082 | \$82,902 | \$85,257 | \$86,897 | \$87,771 | \$89,703 | \$89,359 | 5 | \$101,451 | \$102,041 |
| Assistant Professor | \$69,850 | \$69,850 | \$70,898 | \$72,670 | \$74,470 | \$73,433 | \$75,343 | \$77,177 | \$78,595 | \$77,379 | \$78,461 | \$78,461 | 4 | \$91,155 | \$90,488 |
| All | \$102,589 | \$104,074 | \$105,611 | \$109,787 | \$113,487 | \$112,869 | \$114,184 | \$113,720 | \$119,422 | \$116,930 | \$121,194 | \$116,604 | 25 | \$128,949 | \$126,727 |
| Index | | | | | | | | | | | | | | | |
| Professor | 0.89 | 0.95 | 0.94 | 0.90 | 0.91 | 0.91 | 0.85 | 0.89 | 0.98 | 0.86 | 0.96 | 0.94 | | | |
| Associate Professor | 0.98 | 1.03 | 0.97 | 0.94 | 0.92 | 0.92 | 0.87 | 0.83 | 0.89 | 0.90 | 0.88 | 0.88 | | | |
| Assistant Professor | 1.01 | | 0.99 | 1.00 | 0.99 | 0.92 | 0.88 | 0.87 | 0.90 | 0.89 | 0.86 | 0.87 | | | |
| All | 0.91 | 0.96 | 0.95 | 0.91 | 0.92 | 0.91 | 0.85 | 0.88 | 0.95 | 0.87 | 0.94 | 0.92 | | | |
| ECOLOGY, EVOLUTION, AND ORGANISMAL BIOLOGY ¹ | | | | | | | | | | | | | | | |
| Average Salaries | | | | | | | | | | | | | | | |
| Professor | \$89,113 | \$89,113 | \$90,450 | \$92,614 | \$94,592 | \$102,214 | \$102,380 | \$106,141 | \$109,184 | \$112,833 | \$116,913 | \$116,737 | 11 | \$146,990 | \$131,061 |
| Associate Professor | | | \$76,834 | \$79,139 | \$82,496 | \$85,532 | \$85,742 | \$88,369 | \$90,480 | \$91,097 | \$92,588 | \$94,515 | 7 | \$99,073 | \$98,121 |
| Assistant Professor | \$71,660 | \$71,660 | | \$71,723 | \$74,144 | \$76,708 | \$76,782 | \$79,671 | \$75,000 | \$80,604 | \$83,953 | \$81,652 | 5 | \$90,812 | \$87,201 |
| All | \$86,204 | \$86,204 | \$88,181 | \$87,705 | \$89,943 | \$93,833 | \$92,378 | \$96,266 | \$94,866 | \$99,342 | \$102,344 | \$102,346 | 23 | \$120,194 | \$111,501 |
| Index | | | | | | | | | | | | | | | |
| Professor | 0.78 | 0.80 | 0.77 | 0.75 | 0.75 | 0.81 | 0.80 | 0.74 | 0.81 | 0.81 | 0.80 | 0.89 | | | |
| Associate Professor | | | 0.98 | 0.96 | 0.97 | 0.98 | 0.96 | 0.83 | 0.94 | 1.00 | 0.93 | 0.96 | | | |
| Assistant Professor | 1.09 | 1.04 | | 0.98 | 1.01 | 1.01 | 0.96 | 0.90 | 0.86 | 0.81 | 0.92 | 0.94 | | | |
| All | 0.81 | 0.82 | 0.79 | 0.79 | 0.80 | 0.88 | 0.86 | 0.78 | 0.87 | 0.85 | 0.85 | 0.92 | | | |

Iowa State University
Peer Land Grant Universities Faculty Salary Comparisons
2009-2010 through 2019-2020

| COLLEGE/DEPARTMENT | 2009-2010 | 2010-2011 | 2011-2012 | 2012-2013 | 2013-2014 | 2014-2015 | 2015-2016 | 2016-2017 | 2017-2018 | 2018-2019 | 2019-2020 | | | PEER | |
|--|-----------|-----------|-----------|-----------|-----------|-----------|-----------|-----------|-----------|-----------|------------------------|-----------------------|-------|-----------|---------------|
| | | | | | | | | | | | ISU | | | AVERAGE | |
| | | | | | | | | | | | AVERAGE SALARY & INDEX | MEDIAN SALARY & INDEX | COUNT | SALARY | MEDIAN SALARY |
| COLLEGE OF AGRICULTURE & LIFE SCIENCES, continued | | | | | | | | | | | | | | | |
| ECONOMICS | | | | | | | | | | | | | | | |
| Average Salaries | | | | | | | | | | | | | | | |
| Professor | \$131,624 | \$135,221 | \$137,934 | \$145,107 | \$155,683 | \$164,484 | \$164,719 | \$170,033 | \$165,685 | \$168,712 | \$162,443 | \$147,927 | 8 | \$161,314 | \$156,439 |
| Associate Professor | \$121,358 | \$122,691 | \$110,673 | \$113,254 | \$116,149 | \$119,010 | \$112,575 | \$116,385 | \$120,745 | \$122,700 | \$126,544 | \$127,893 | 6 | \$119,256 | \$117,679 |
| Assistant Professor | \$97,500 | \$99,916 | \$101,415 | \$98,062 | \$103,847 | \$108,626 | \$109,542 | \$112,941 | \$113,019 | \$120,191 | \$116,404 | \$115,382 | 5 | \$106,891 | \$96,660 |
| All | \$127,815 | \$129,242 | \$130,800 | \$134,816 | \$141,511 | \$143,049 | \$141,125 | \$143,338 | \$138,363 | \$143,044 | \$138,991 | \$133,036 | 19 | \$133,711 | \$128,467 |
| Index | | | | | | | | | | | | | | | |
| Professor | 1.11 | 1.17 | 1.15 | 1.14 | 1.21 | 1.24 | 1.16 | 1.19 | 1.10 | 1.09 | 1.01 | 0.95 | | | |
| Associate Professor | 1.38 | 1.38 | 1.19 | 1.14 | 1.17 | 1.13 | 1.04 | 1.02 | 1.03 | 0.91 | 1.06 | 1.09 | | | |
| Assistant Professor | 1.25 | 1.25 | 1.21 | 1.10 | 1.15 | 1.15 | 1.08 | 1.12 | 1.08 | 1.14 | 1.09 | 1.19 | | | |
| All | 1.14 | 1.20 | 1.16 | 1.13 | 1.20 | 1.21 | 1.13 | 1.15 | 1.08 | 1.04 | 1.04 | 1.04 | | | |
| ENTOMOLOGY | | | | | | | | | | | | | | | |
| Average Salaries | | | | | | | | | | | | | | | |
| Professor | \$92,771 | \$88,157 | \$95,920 | \$97,584 | \$101,471 | \$99,213 | \$101,031 | \$113,985 | \$99,527 | \$100,523 | \$86,677 | \$86,064 | 4 | \$135,464 | \$130,781 |
| Associate Professor | \$72,038 | \$67,314 | \$71,490 | \$78,629 | \$79,152 | \$74,547 | \$75,292 | \$77,815 | \$77,140 | \$77,912 | \$83,852 | \$83,852 | 2 | \$100,584 | \$95,677 |
| Assistant Professor | \$60,605 | \$63,765 | \$60,700 | \$65,345 | \$67,843 | | \$70,000 | \$71,609 | \$71,609 | \$72,325 | \$73,771 | \$73,771 | 1 | \$87,996 | \$86,029 |
| All | \$80,321 | \$77,715 | \$82,854 | \$87,472 | \$90,298 | \$88,250 | \$87,633 | \$95,279 | \$87,642 | \$88,519 | \$84,026 | \$83,676 | 7 | \$118,717 | \$114,358 |
| Index | | | | | | | | | | | | | | | |
| Professor | 0.85 | 0.85 | 0.88 | 0.87 | 0.90 | 0.85 | 0.84 | 0.94 | 0.79 | 0.77 | 0.64 | 0.66 | | | |
| Associate Professor | 1.00 | 0.94 | 0.95 | 0.98 | 0.95 | 0.86 | 0.86 | 0.83 | 0.79 | 0.80 | 0.83 | 0.88 | | | |
| Assistant Professor | 0.91 | 0.97 | 0.89 | 0.88 | 0.88 | | 0.86 | 0.85 | 0.83 | 0.83 | 0.84 | 0.86 | | | |
| All | 0.88 | 0.89 | 0.89 | 0.90 | 0.91 | 0.86 | 0.85 | 0.89 | 0.79 | 0.79 | 0.71 | 0.73 | | | |
| FOOD SCIENCE AND HUMAN NUTRITION - AG ¹ | | | | | | | | | | | | | | | |
| Average Salaries | | | | | | | | | | | | | | | |
| Professor | \$123,380 | \$116,524 | \$118,749 | \$122,501 | \$125,213 | \$109,875 | \$111,659 | \$115,663 | \$142,652 | \$109,759 | \$101,436 | \$101,436 | 6 | \$140,019 | \$142,825 |
| Associate Professor | \$78,843 | \$81,517 | \$82,739 | \$84,926 | \$87,012 | \$89,129 | \$88,253 | \$90,284 | \$92,357 | \$92,204 | \$94,898 | \$88,641 | 12 | \$107,076 | \$101,747 |
| Assistant Professor | \$74,523 | \$73,000 | \$73,422 | \$72,446 | \$75,052 | \$77,151 | \$77,313 | \$81,470 | \$86,731 | \$83,196 | \$84,146 | \$81,113 | 10 | \$90,672 | \$88,383 |
| All | \$98,402 | \$100,304 | \$97,059 | \$101,039 | \$101,650 | \$92,170 | \$92,446 | \$97,015 | \$111,350 | \$94,768 | \$92,459 | \$88,694 | 28 | \$108,277 | \$105,777 |
| Index | | | | | | | | | | | | | | | |
| Professor | 1.16 | 1.10 | 1.06 | 1.05 | 1.05 | 0.93 | 0.90 | 0.91 | 1.08 | 0.78 | 0.72 | 0.71 | | | |
| Associate Professor | 1.05 | 1.04 | 1.01 | 1.02 | 1.05 | 1.04 | 1.06 | 0.99 | 0.98 | 0.95 | 0.89 | 0.87 | | | |
| Assistant Professor | 1.08 | 1.02 | 1.01 | 0.95 | 1.02 | 0.97 | 0.96 | 0.97 | 0.99 | 0.94 | 0.93 | 0.92 | | | |
| All | 1.11 | 1.08 | 1.04 | 1.03 | 1.05 | 0.98 | 0.99 | 0.95 | 1.03 | 0.88 | 0.85 | 0.84 | | | |

Iowa State University
Peer Land Grant Universities Faculty Salary Comparisons
2009-2010 through 2019-2020

| COLLEGE/DEPARTMENT | 2009-2010 | 2010-2011 | 2011-2012 | 2012-2013 | 2013-2014 | 2014-2015 | 2015-2016 | 2016-2017 | 2017-2018 | 2018-2019 | 2019-2020 | | | PEER | | |
|--|-----------|-----------|-----------|-----------|-----------|-----------|-----------|-----------|-----------|-----------|------------------------|-----------------------|----|-----------|----------------|---------------|
| | | | | | | | | | | | ISU | | | COUNT | AVERAGE SALARY | MEDIAN SALARY |
| | | | | | | | | | | | AVERAGE SALARY & INDEX | MEDIAN SALARY & INDEX | | | | |
| COLLEGE OF AGRICULTURE & LIFE SCIENCES, continued | | | | | | | | | | | | | | | | |
| GENETICS, DEVELOPMENT, AND CELL BIOLOGY ¹ | | | | | | | | | | | | | | | | |
| Average Salaries | | | | | | | | | | | | | | | | |
| Professor | \$124,984 | \$125,484 | \$121,717 | \$126,329 | \$134,607 | \$128,741 | \$127,861 | \$132,267 | \$134,195 | \$133,903 | \$135,835 | \$131,087 | 13 | \$147,342 | \$136,806 | |
| Associate Professor | \$88,097 | \$86,355 | \$83,274 | \$85,422 | \$87,486 | \$93,027 | \$94,312 | \$97,926 | \$102,542 | \$94,147 | \$87,333 | \$85,283 | 3 | \$107,920 | \$103,416 | |
| Assistant Professor | \$74,247 | \$74,637 | | \$71,750 | \$73,475 | \$75,201 | \$78,045 | \$80,544 | \$81,900 | \$84,458 | \$87,452 | \$87,115 | 7 | \$95,380 | \$91,221 | |
| All | \$99,875 | \$101,142 | \$104,631 | \$104,508 | \$109,645 | \$106,262 | \$106,248 | \$108,038 | \$118,932 | \$116,240 | \$114,783 | \$111,730 | 23 | \$126,385 | \$118,577 | |
| Index | | | | | | | | | | | | | | | | |
| Professor | 1.12 | 1.10 | 1.04 | 1.04 | 1.06 | 0.93 | 1.01 | 0.93 | 0.91 | 0.89 | 0.92 | 0.96 | | | | |
| Associate Professor | 1.11 | 1.08 | 1.05 | 1.04 | 1.04 | 1.07 | 1.00 | 1.06 | 1.02 | 0.89 | 0.81 | 0.82 | | | | |
| Assistant Professor | 1.10 | | | 0.95 | 0.93 | 0.90 | 0.90 | 0.97 | 0.90 | 0.91 | 0.92 | 0.95 | | | | |
| All | 1.11 | 1.09 | 1.05 | 1.03 | 1.04 | 0.96 | 0.98 | 0.96 | 0.93 | 0.89 | 0.91 | 0.94 | | | | |
| HORTICULTURE | | | | | | | | | | | | | | | | |
| Average Salaries | | | | | | | | | | | | | | | | |
| Professor | \$90,667 | \$89,279 | \$93,078 | \$95,676 | \$98,642 | \$104,828 | \$105,876 | \$112,161 | \$109,775 | \$107,190 | \$109,334 | \$102,043 | 8 | \$123,162 | \$126,518 | |
| Associate Professor | \$66,453 | \$67,583 | \$68,843 | \$73,258 | \$71,586 | \$73,019 | \$73,748 | \$75,592 | \$75,626 | \$77,104 | \$80,206 | \$80,986 | 3 | \$96,486 | \$96,802 | |
| Assistant Professor | \$57,273 | \$60,136 | \$61,364 | \$63,320 | \$67,619 | \$67,321 | \$67,995 | \$68,023 | \$66,829 | \$69,561 | \$69,859 | \$69,859 | 2 | \$89,283 | \$88,035 | |
| All | \$81,013 | \$80,999 | \$83,889 | \$88,014 | \$89,707 | \$91,279 | \$92,192 | \$94,326 | \$91,984 | \$92,141 | \$96,539 | \$92,232 | 13 | \$111,794 | \$113,740 | |
| Index | | | | | | | | | | | | | | | | |
| Professor | 0.90 | 0.89 | 0.88 | 0.89 | 0.89 | 0.94 | 0.94 | 0.97 | 0.93 | 0.89 | 0.89 | 0.81 | | | | |
| Associate Professor | 0.89 | 0.90 | 0.90 | 0.94 | 0.88 | 0.90 | 0.85 | 0.87 | 0.86 | 0.85 | 0.83 | 0.84 | | | | |
| Assistant Professor | 0.87 | 0.92 | 0.90 | 0.93 | 0.90 | 0.90 | 0.85 | 0.85 | 0.81 | 0.80 | 0.78 | 0.79 | | | | |
| All | 0.90 | 0.90 | 0.89 | 0.90 | 0.89 | 0.92 | 0.91 | 0.93 | 0.89 | 0.87 | 0.86 | 0.81 | | | | |
| NATURAL RESOURCE ECOLOGY AND MANAGEMENT | | | | | | | | | | | | | | | | |
| Average Salaries | | | | | | | | | | | | | | | | |
| Professor | \$94,967 | \$90,870 | \$91,905 | \$95,265 | \$96,342 | \$99,469 | \$104,077 | \$108,571 | \$109,385 | \$110,886 | \$123,859 | \$112,253 | 7 | \$132,829 | \$130,614 | |
| Associate Professor | \$75,052 | \$79,082 | \$77,300 | \$78,158 | \$77,345 | \$80,528 | \$80,468 | \$78,540 | \$78,539 | \$83,338 | \$83,974 | \$84,279 | 6 | \$97,528 | \$93,123 | |
| Assistant Professor | \$64,560 | \$61,577 | \$64,554 | \$65,788 | \$68,338 | \$73,251 | \$72,047 | \$72,359 | \$71,687 | \$69,662 | \$62,953 | \$64,985 | 3 | \$87,328 | \$85,406 | |
| All | \$74,874 | \$76,390 | \$76,097 | \$78,597 | \$80,009 | \$86,694 | \$89,801 | \$90,133 | \$89,225 | \$91,971 | \$97,482 | \$92,900 | 16 | \$111,060 | \$108,078 | |
| Index | | | | | | | | | | | | | | | | |
| Professor | 0.89 | 0.89 | 0.88 | 0.85 | 0.87 | 0.87 | 0.86 | 0.87 | 0.86 | 0.85 | 0.93 | 0.86 | | | | |
| Associate Professor | 1.00 | 1.10 | 1.05 | 1.00 | 0.96 | 0.95 | 0.92 | 0.86 | 0.81 | 0.78 | 0.86 | 0.91 | | | | |
| Assistant Professor | 1.01 | 0.95 | 0.87 | 0.93 | 0.94 | 0.96 | 0.91 | 0.87 | 0.85 | 0.81 | 0.72 | 0.76 | | | | |
| All | 0.97 | 0.99 | 0.93 | 0.93 | 0.93 | 0.91 | 0.88 | 0.87 | 0.84 | 0.82 | 0.88 | 0.86 | | | | |

Iowa State University
Peer Land Grant Universities Faculty Salary Comparisons
2009-2010 through 2019-2020

| COLLEGE/DEPARTMENT | 2009-2010 | 2010-2011 | 2011-2012 | 2012-2013 | 2013-2014 | 2014-2015 | 2015-2016 | 2016-2017 | 2017-2018 | 2018-2019 | 2019-2020 | | | PEER | | |
|--|-----------|-----------|-----------|-----------|-----------|-----------|-----------|-----------|-----------|-----------|------------------------|-----------------------|-----|-----------|----------------|---------------|
| | | | | | | | | | | | ISU | | | COUNT | AVERAGE SALARY | MEDIAN SALARY |
| | | | | | | | | | | | AVERAGE SALARY & INDEX | MEDIAN SALARY & INDEX | | | | |
| COLLEGE OF AGRICULTURE AND LIFE SCIENCES, continued | | | | | | | | | | | | | | | | |
| PLANT PATHOLOGY AND MICROBIOLOGY⁷ | | | | | | | | | | | | | | | | |
| Average Salaries | | | | | | | | | | | | | | | | |
| Professor | \$97,684 | \$99,311 | \$100,887 | \$105,113 | \$110,649 | \$116,203 | \$117,365 | \$122,500 | \$121,434 | \$124,115 | \$129,781 | \$124,052 | 10 | \$139,846 | \$130,332 | |
| Associate Professor | \$83,830 | \$84,171 | \$75,131 | \$73,744 | \$75,588 | \$78,125 | \$77,227 | \$86,938 | \$96,637 | \$98,949 | \$100,928 | \$102,717 | 3 | \$102,488 | \$96,902 | |
| Assistant Professor | \$64,662 | \$62,846 | \$63,248 | \$71,284 | \$73,066 | \$78,947 | \$81,775 | \$85,527 | \$86,438 | \$89,597 | \$90,283 | \$88,072 | 3 | \$89,078 | \$86,299 | |
| All | \$88,029 | \$91,914 | \$93,705 | \$97,117 | \$101,726 | \$104,406 | \$105,675 | \$106,302 | \$109,525 | \$115,082 | \$116,965 | \$113,305 | 16 | \$123,322 | \$115,808 | |
| Index | | | | | | | | | | | | | | | | |
| Professor | 0.96 | 1.03 | 0.98 | 0.95 | 0.97 | 0.94 | 0.95 | 0.97 | 0.93 | 0.95 | 0.93 | 0.95 | | | | |
| Associate Professor | 1.17 | 1.20 | 1.03 | 0.96 | 0.92 | 0.91 | 0.89 | 0.96 | 1.00 | 1.04 | 0.98 | 1.06 | | | | |
| Assistant Professor | 0.98 | 0.98 | 0.97 | 1.00 | 0.96 | 1.00 | 1.04 | 1.05 | 1.03 | 1.04 | 1.01 | 1.02 | | | | |
| All | 1.01 | 1.05 | 0.99 | 0.96 | 0.96 | 0.94 | 0.96 | 0.99 | 0.95 | 0.97 | 0.95 | 0.98 | | | | |
| SOCIOLOGY¹ | | | | | | | | | | | | | | | | |
| Average Salaries | | | | | | | | | | | | | | | | |
| Professor | \$92,738 | \$94,175 | \$89,466 | \$97,318 | \$99,348 | \$96,660 | \$101,764 | \$101,273 | \$114,365 | \$99,882 | \$102,512 | \$93,235 | 13 | \$146,425 | \$144,339 | |
| Associate Professor | \$65,533 | | | \$79,625 | \$75,105 | \$77,569 | \$80,617 | \$96,847 | \$78,252 | \$78,423 | \$78,423 | \$78,423 | 4 | \$102,795 | \$99,592 | |
| Assistant Professor | \$59,296 | \$62,174 | \$65,033 | \$67,080 | \$67,823 | \$63,429 | \$66,042 | \$71,474 | \$69,637 | \$71,670 | \$76,410 | \$76,000 | 3 | \$85,396 | \$84,132 | |
| All | \$77,264 | \$83,508 | \$81,322 | \$85,979 | \$87,126 | \$84,821 | \$89,194 | \$90,131 | \$100,015 | \$91,653 | \$93,779 | \$87,687 | 20 | \$128,545 | \$126,359 | |
| Index | | | | | | | | | | | | | | | | |
| Professor | 0.76 | 0.78 | 0.73 | 0.75 | 0.77 | 0.76 | 0.74 | 0.72 | 0.81 | 0.69 | 0.70 | 0.65 | | | | |
| Associate Professor | 0.83 | | | | 0.91 | 0.85 | 0.83 | 0.84 | 0.97 | 0.77 | 0.76 | 0.79 | | | | |
| Assistant Professor | 0.89 | 0.93 | 0.95 | 0.95 | 0.93 | 0.86 | 0.85 | 0.92 | 0.86 | 0.87 | 0.89 | 0.90 | | | | |
| All | 0.80 | 0.81 | 0.78 | 0.80 | 0.82 | 0.79 | 0.77 | 0.77 | 0.89 | 0.72 | 0.73 | 0.69 | | | | |
| AGRICULTURE AND LIFE SCIENCES SUMMARY | | | | | | | | | | | | | | | | |
| Average Salaries | | | | | | | | | | | | | | | | |
| Professor | \$106,782 | \$107,576 | \$108,040 | \$112,239 | \$116,012 | \$118,794 | \$119,360 | \$123,875 | \$125,354 | \$123,228 | \$125,912 | \$122,179 | 162 | \$139,205 | \$133,463 | |
| Associate Professor | \$80,520 | \$81,565 | \$80,468 | \$83,626 | \$86,293 | \$87,010 | \$88,895 | \$90,978 | \$93,458 | \$94,104 | \$95,113 | \$95,694 | 75 | \$103,672 | \$100,869 | |
| Assistant Professor | \$70,545 | \$72,899 | \$74,854 | \$77,262 | \$80,228 | \$82,229 | \$81,577 | \$83,223 | \$85,200 | \$83,834 | \$85,675 | \$84,338 | 63 | \$91,464 | \$88,508 | |
| All | \$94,169 | \$96,129 | \$96,628 | \$100,117 | \$103,038 | \$104,219 | \$104,254 | \$107,079 | \$108,950 | \$107,607 | \$109,762 | \$107,611 | 300 | \$120,296 | \$115,874 | |
| Index | | | | | | | | | | | | | | | | |
| Professor | 1.01 | 1.05 | 1.02 | 1.00 | 0.99 | 0.96 | 0.94 | 0.95 | 0.97 | 0.90 | 0.90 | 0.92 | | | | |
| Associate Professor | 1.06 | 1.09 | 1.07 | 1.07 | 1.02 | 0.99 | 0.99 | 0.95 | 0.96 | 0.91 | 0.92 | 0.95 | | | | |
| Assistant Professor | 1.09 | 1.10 | 1.06 | 1.04 | 1.04 | 1.02 | 0.98 | 0.98 | 0.97 | 0.93 | 0.94 | 0.95 | | | | |
| All | 1.03 | 1.06 | 1.03 | 1.02 | 1.00 | 0.97 | 0.95 | 0.96 | 0.97 | 0.91 | 0.91 | 0.93 | | | | |

Iowa State University
Peer Land Grant Universities Faculty Salary Comparisons
2009-2010 through 2019-2020

| COLLEGE/DEPARTMENT | 2009-2010 | 2010-2011 | 2011-2012 | 2012-2013 | 2013-2014 | 2014-2015 | 2015-2016 | 2016-2017 | 2017-2018 | 2018-2019 | 2019-2020 | | | PEER | |
|--|-----------|-----------|-----------|-----------|-----------|-----------|-----------|-----------|-----------|-----------|------------------------|-----------------------|-------|----------------|---------------|
| | | | | | | | | | | | ISU | | | PEER | |
| | | | | | | | | | | | AVERAGE SALARY & INDEX | MEDIAN SALARY & INDEX | COUNT | AVERAGE SALARY | MEDIAN SALARY |
| -COLLEGE OF BUSINESS- | | | | | | | | | | | | | | | |
| ACCOUNTING | | | | | | | | | | | | | | | |
| Average Salaries | | | | | | | | | | | | | | | |
| Professor | \$157,936 | \$161,686 | \$164,000 | \$211,763 | \$210,675 | \$177,100 | \$173,780 | \$183,825 | \$181,650 | \$197,287 | \$189,548 | \$189,548 | 1 | \$269,301 | \$279,324 |
| Associate Professor | \$131,803 | \$137,295 | \$147,823 | \$150,916 | \$156,612 | \$160,842 | \$162,263 | \$166,646 | \$171,762 | \$176,794 | \$177,217 | \$170,203 | 7 | \$219,575 | \$240,075 |
| Assistant Professor | \$129,125 | \$131,250 | \$138,068 | \$143,953 | \$147,838 | \$155,694 | \$157,251 | \$170,186 | \$165,238 | \$172,877 | \$179,109 | \$178,108 | 4 | \$217,389 | \$221,946 |
| All | \$133,205 | \$137,318 | \$143,588 | \$155,132 | \$159,322 | \$158,925 | \$160,951 | \$170,870 | \$72,800 | \$176,859 | \$178,875 | \$174,450 | 12 | \$222,990 | \$237,303 |
| Index | | | | | | | | | | | | | | | |
| Professor | 0.84 | 0.89 | 0.89 | 1.00 | 0.98 | 0.80 | 0.65 | 0.75 | 0.72 | 0.78 | 0.70 | 0.68 | | | |
| Associate Professor | 0.88 | 0.90 | 0.95 | 0.89 | 0.91 | 0.88 | 0.82 | 0.85 | 0.84 | 0.83 | 0.81 | 0.71 | | | |
| Assistant Professor | 0.79 | 0.77 | 0.79 | 0.79 | 0.77 | 0.81 | 0.78 | 0.83 | 0.80 | 0.80 | 0.82 | 0.80 | | | |
| All | 0.84 | 0.84 | 0.84 | 0.84 | 0.84 | 0.83 | 0.76 | 0.82 | 0.81 | 0.81 | 0.80 | 0.74 | | | |
| FINANCE | | | | | | | | | | | | | | | |
| Average Salaries | | | | | | | | | | | | | | | |
| Professor | \$159,962 | \$162,712 | \$157,637 | \$168,932 | \$171,556 | \$168,650 | \$170,337 | \$176,146 | \$176,070 | \$225,774 | \$221,442 | \$218,198 | 4 | \$290,147 | \$297,501 |
| Associate Professor | \$135,020 | \$141,396 | \$145,075 | \$153,983 | \$160,890 | \$165,060 | \$168,085 | \$172,145 | \$175,035 | \$180,225 | \$170,900 | \$175,357 | 7 | \$229,984 | \$228,926 |
| Assistant Professor | \$136,240 | \$138,457 | \$141,496 | \$143,672 | \$147,800 | \$158,183 | \$159,896 | \$167,296 | \$171,325 | \$187,143 | \$194,286 | \$181,933 | 3 | \$229,370 | \$228,749 |
| All | \$143,842 | \$146,017 | \$146,047 | \$153,835 | \$157,310 | \$161,413 | \$164,272 | \$171,130 | \$174,302 | \$190,063 | \$190,352 | \$189,006 | 14 | \$247,042 | \$248,481 |
| Index | | | | | | | | | | | | | | | |
| Professor | 0.80 | 0.77 | 0.71 | 0.69 | 0.73 | 0.69 | 0.68 | 0.68 | 0.67 | 0.79 | 0.76 | 0.73 | | | |
| Associate Professor | 0.78 | 0.79 | 0.82 | 0.82 | 0.81 | 0.79 | 0.76 | 0.78 | 0.85 | 0.87 | 0.74 | 0.77 | | | |
| Assistant Professor | 0.83 | 0.78 | 0.78 | 0.76 | 0.78 | 0.79 | 0.78 | 0.79 | 0.79 | 0.85 | 0.85 | 0.80 | | | |
| All | 0.80 | 0.78 | 0.77 | 0.75 | 0.77 | 0.78 | 0.76 | 0.77 | 0.79 | 0.85 | 0.77 | 0.76 | | | |
| INFORMATION SYSTEMS AND BUSINESS ANALYTICS¹³ | | | | | | | | | | | | | | | |
| Average Salaries | | | | | | | | | | | | | | | |
| Professor | | | | | | | | | | | \$166,820 | \$166,820 | 2 | \$189,190 | \$174,146 |
| Associate Professor | | | | | | | | | | | \$154,482 | \$148,403 | 5 | \$139,996 | \$148,028 |
| Assistant Professor | | | | | | | | | | | \$144,904 | \$145,000 | 5 | \$123,425 | \$132,331 |
| All | | | | | | | | | | | \$152,548 | \$150,055 | 12 | \$141,291 | \$145,841 |
| Index | | | | | | | | | | | | | | | |
| Professor | | | | | | | | | | | 0.88 | 0.96 | | | |
| Associate Professor | | | | | | | | | | | 1.10 | 1.00 | | | |
| Assistant Professor | | | | | | | | | | | 1.17 | 1.10 | | | |
| All | | | | | | | | | | | 1.08 | 1.03 | | | |

Iowa State University
Peer Land Grant Universities Faculty Salary Comparisons
2009-2010 through 2019-2020

| COLLEGE/DEPARTMENT | 2009-2010 | 2010-2011 | 2011-2012 | 2012-2013 | 2013-2014 | 2014-2015 | 2015-2016 | 2016-2017 | 2017-2018 | 2018-2019 | 2019-2020 | | | PEER | |
|--|-----------|-----------|-----------|-----------|-----------|-----------|-----------|-----------|-----------|-----------|------------------------------|-----------------------------|-------|-------------------|------------------|
| | | | | | | | | | | | ISU | | | AVERAGE SALARY | MEDIAN SALARY |
| | | | | | | | | | | | AVERAGE SALARY & INDEX | MEDIAN SALARY & INDEX | COUNT | | |
| COLLEGE OF BUSINESS, continued | | | | | | | | | | | | | | | |
| MANAGEMENT | | | | | | | | | | | | | | | |
| Average Salaries | | | | | | | | | | | | | | | |
| Professor | \$156,685 | \$159,714 | \$162,325 | \$163,055 | \$159,152 | \$166,974 | \$173,978 | \$182,739 | \$185,349 | \$193,812 | \$194,316 | \$194,316 | 2 | \$250,335 | \$256,101 |
| Associate Professor | \$108,634 | \$112,547 | \$118,239 | \$123,463 | \$129,104 | \$139,786 | \$140,739 | \$146,717 | \$153,977 | \$157,127 | \$154,226 | \$152,591 | 6 | \$192,360 | \$197,659 |
| Assistant Professor | \$114,439 | \$117,464 | \$121,547 | \$122,643 | \$126,312 | \$130,094 | \$133,344 | \$138,529 | \$146,036 | \$150,895 | \$154,491 | \$154,530 | 9 | \$173,072 | \$167,878 |
| All | \$130,886 | \$134,166 | \$137,842 | \$143,142 | \$137,705 | \$143,078 | \$145,749 | \$151,738 | \$156,385 | \$160,889 | \$159,083 | \$158,526 | 17 | \$188,969 | \$188,768 |
| Index | | | | | | | | | | | | | | | |
| Professor | 0.87 | 0.92 | 0.88 | 0.80 | 0.77 | 0.77 | 0.74 | 0.77 | 0.76 | 0.78 | 0.78 | 0.76 | | | |
| Associate Professor | 0.79 | 0.84 | 0.87 | 0.81 | 0.81 | 0.81 | 0.80 | 0.82 | 0.82 | 0.83 | 0.80 | 0.77 | | | |
| Assistant Professor | 0.90 | 0.92 | 0.92 | 0.87 | 0.88 | 0.87 | 0.85 | 0.87 | 0.88 | 0.90 | 0.89 | 0.92 | | | |
| All | 0.86 | 0.90 | 0.88 | 0.81 | 0.81 | 0.82 | 0.80 | 0.82 | 0.83 | 0.85 | 0.84 | 0.84 | | | |
| MARKETING | | | | | | | | | | | | | | | |
| Average Salaries | | | | | | | | | | | | | | | |
| Professor | \$159,368 | \$161,793 | \$155,524 | \$163,287 | \$167,853 | \$172,513 | \$175,321 | \$181,936 | \$196,152 | \$207,460 | \$195,944 | \$192,300 | 5 | \$240,254 | \$248,986 |
| Associate Professor | \$128,029 | \$129,729 | \$133,679 | \$136,218 | \$139,769 | \$143,937 | \$145,376 | \$158,712 | \$157,387 | \$169,505 | \$162,315 | \$167,571 | 6 | \$186,981 | \$183,268 |
| Assistant Professor | \$117,476 | \$119,192 | \$123,671 | \$123,020 | \$128,683 | \$136,473 | \$140,808 | \$149,726 | \$153,703 | \$158,576 | \$161,314 | \$161,600 | 4 | \$173,286 | \$178,356 |
| All | \$133,199 | \$135,149 | \$134,178 | \$140,062 | \$144,942 | \$148,710 | \$152,130 | \$162,709 | \$164,632 | \$173,735 | \$173,258 | \$174,222 | 15 | \$201,087 | \$203,864 |
| Index | | | | | | | | | | | | | | | |
| Professor | 0.86 | 0.93 | 0.85 | 0.83 | 0.84 | 0.81 | 0.78 | 0.83 | 0.86 | 0.87 | 0.82 | 0.77 | | | |
| Associate Professor | 0.99 | 1.07 | 1.09 | 0.97 | 0.90 | 0.82 | 0.83 | 0.93 | 0.86 | 0.91 | 0.87 | 0.91 | | | |
| Assistant Professor | 0.91 | 0.94 | 0.93 | 0.86 | 0.84 | 0.90 | 0.88 | 0.95 | 0.94 | 0.95 | 0.93 | 0.91 | | | |
| All | 0.90 | 0.96 | 0.93 | 0.87 | 0.85 | 0.85 | 0.84 | 0.90 | 0.89 | 0.91 | 0.86 | 0.85 | | | |
| SUPPLY CHAIN MANAGEMENT^{5, 13} | | | | | | | | | | | | | | | |
| Average Salaries | | | | | | | | | | | | | | | |
| Professor | | | | | | | | | | | \$190,647 | \$189,000 | 5 | \$219,552 | \$217,605 |
| Associate Professor | | | | | | | | | | | \$162,038 | \$163,836 | 6 | \$171,509 | \$176,691 |
| Assistant Professor | | | | | | | | | | | \$147,204 | \$146,880 | 5 | \$149,542 | \$148,430 |
| All | | | | | | | | | | | \$166,343 | \$166,401 | 16 | \$179,658 | \$180,645 |
| Index | | | | | | | | | | | | | | | |
| Professor | | | | | | | | | | | 0.87 | 0.87 | | | |
| Associate Professor | | | | | | | | | | | 0.94 | 0.93 | | | |
| Assistant Professor | | | | | | | | | | | 0.98 | 0.99 | | | |
| All | | | | | | | | | | | 0.93 | 0.92 | | | |

Iowa State University
Peer Land Grant Universities Faculty Salary Comparisons
2009-2010 through 2019-2020

| COLLEGE/DEPARTMENT | 2009-2010 | 2010-2011 | 2011-2012 | 2012-2013 | 2013-2014 | 2014-2015 | 2015-2016 | 2016-2017 | 2017-2018 | 2018-2019 | 2019-2020 | | | PEER | |
|---|-----------|-----------|-----------|-----------|-----------|-----------|-----------|-----------|-----------|-----------|------------------------|-----------------------|-------|----------------|---------------|
| | | | | | | | | | | | ISU | | | PEER | |
| | | | | | | | | | | | AVERAGE SALARY & INDEX | MEDIAN SALARY & INDEX | COUNT | AVERAGE SALARY | MEDIAN SALARY |
| COLLEGE OF BUSINESS, continued | | | | | | | | | | | | | | | |
| SUPPLY CHAIN & INFORMATION MANAGEMENT^{5,13} | | | | | | | | | | | | | | | |
| Average Salaries | | | | | | | | | | | | | | | |
| Professor | \$147,068 | \$153,257 | \$188,024 | \$199,188 | \$183,028 | \$170,794 | \$175,238 | \$190,171 | \$207,136 | \$208,245 | | | | | |
| Associate Professor | \$123,690 | \$124,406 | \$126,560 | \$133,070 | \$136,589 | \$136,299 | \$143,911 | \$148,987 | \$153,080 | \$155,784 | | | | | |
| Assistant Professor | \$108,800 | \$112,100 | \$115,677 | \$118,975 | \$121,123 | \$127,444 | \$131,272 | \$134,356 | \$133,904 | \$140,014 | | | | | |
| All | \$124,277 | \$124,429 | \$129,157 | \$131,262 | \$139,851 | \$141,231 | \$146,734 | \$154,045 | \$159,050 | \$161,200 | | | | | |
| Index | | | | | | | | | | | | | | | |
| Professor | 0.87 | 0.89 | 1.07 | 1.04 | 0.86 | 0.85 | 0.84 | 0.90 | 0.97 | 0.96 | | | | | |
| Associate Professor | 0.92 | 0.97 | 0.96 | 1.04 | 0.92 | 1.00 | 1.02 | 1.02 | 1.00 | 0.97 | | | | | |
| Assistant Professor | 0.84 | 0.88 | 0.89 | 0.94 | 0.83 | 0.94 | 0.95 | 0.93 | 0.92 | 0.93 | | | | | |
| All | 0.90 | 0.92 | 0.95 | 1.00 | 0.89 | 0.94 | 0.96 | 0.97 | 0.98 | 0.96 | | | | | |
| BUSINESS SUMMARY | | | | | | | | | | | | | | | |
| Average Salaries | | | | | | | | | | | | | | | |
| Professor | \$156,476 | \$159,876 | \$163,565 | \$171,832 | \$174,570 | \$170,611 | \$174,160 | \$183,772 | \$192,670 | \$207,993 | \$198,379 | \$196,151 | 14 | \$250,729 | \$255,339 |
| Associate Professor | \$124,887 | \$127,536 | \$130,740 | \$137,047 | \$141,728 | \$145,892 | \$149,744 | \$157,085 | \$161,387 | \$167,725 | \$168,381 | \$167,414 | 36 | \$200,575 | \$205,465 |
| Assistant Professor | \$121,544 | \$123,711 | \$128,803 | \$132,787 | \$136,943 | \$144,912 | \$147,268 | \$154,718 | \$152,121 | \$155,677 | \$162,314 | \$161,401 | 31 | \$175,956 | \$178,070 |
| All | \$132,226 | \$134,626 | \$137,349 | \$144,126 | \$147,389 | \$150,190 | \$153,424 | \$161,459 | \$163,915 | \$170,768 | \$171,244 | \$170,079 | 81 | \$199,822 | \$203,601 |
| Index | | | | | | | | | | | | | | | |
| Professor | 0.85 | 0.87 | 0.86 | 0.81 | 0.82 | 0.79 | 0.75 | 0.80 | 0.82 | 0.86 | 0.79 | 0.77 | | | |
| Associate Professor | 0.88 | 0.91 | 0.93 | 0.92 | 0.87 | 0.88 | 0.87 | 0.88 | 0.89 | 0.89 | 0.84 | 0.81 | | | |
| Assistant Professor | 0.85 | 0.85 | 0.84 | 0.82 | 0.80 | 0.84 | 0.83 | 0.86 | 0.87 | 0.89 | 0.92 | 0.91 | | | |
| All | 0.86 | 0.87 | 0.87 | 0.85 | 0.83 | 0.84 | 0.83 | 0.85 | 0.87 | 0.88 | 0.86 | 0.84 | | | |

Iowa State University
Peer Land Grant Universities Faculty Salary Comparisons
2009-2010 through 2019-2020

| COLLEGE/DEPARTMENT | 2009-2010 | 2010-2011 | 2011-2012 | 2012-2013 | 2013-2014 | 2014-2015 | 2015-2016 | 2016-2017 | 2017-2018 | 2018-2019 | 2019-2020 | | | PEER | |
|--|-----------|-----------|-----------|-----------|-----------|-----------|-----------|-----------|-----------|-----------|------------------------|-----------------------|-------|----------------|---------------|
| | | | | | | | | | | | ISU | | | AVERAGE | |
| | | | | | | | | | | | AVERAGE SALARY & INDEX | MEDIAN SALARY & INDEX | COUNT | AVERAGE SALARY | MEDIAN SALARY |
| -COLLEGE OF DESIGN- | | | | | | | | | | | | | | | |
| ARCHITECTURE | | | | | | | | | | | | | | | |
| Average Salaries | | | | | | | | | | | | | | | |
| Professor | \$95,371 | \$96,896 | \$96,476 | \$99,031 | \$103,488 | \$107,593 | \$107,450 | \$108,808 | \$107,000 | \$107,884 | \$108,371 | \$118,769 | 6 | \$129,786 | \$126,309 |
| Associate Professor | \$77,550 | \$79,090 | \$77,451 | \$79,533 | \$83,540 | \$84,550 | \$84,088 | \$86,112 | \$87,264 | \$85,857 | \$86,568 | \$86,700 | 7 | \$93,474 | \$94,593 |
| Assistant Professor | \$60,724 | \$61,951 | \$65,305 | \$67,016 | \$67,008 | \$67,510 | \$68,126 | \$70,266 | \$70,170 | \$70,778 | \$72,510 | \$72,506 | 5 | \$78,537 | \$79,346 |
| All | \$79,396 | \$79,272 | \$83,182 | \$83,648 | \$87,040 | \$88,655 | \$88,372 | \$89,634 | \$84,199 | \$85,304 | \$89,931 | \$93,447 | 18 | \$101,429 | \$100,930 |
| Index | | | | | | | | | | | | | | | |
| Professor | 0.87 | 0.94 | 0.93 | 0.86 | 0.90 | 0.92 | 0.87 | 0.88 | 0.87 | 0.85 | 0.83 | 0.94 | | | |
| Associate Professor | 0.97 | 1.03 | 1.01 | 0.99 | 1.00 | 1.01 | 1.00 | 0.99 | 1.00 | 0.94 | 0.93 | 0.92 | | | |
| Assistant Professor | 0.98 | 1.01 | 1.02 | 0.97 | 0.97 | 0.98 | 0.94 | 0.96 | 0.98 | 0.94 | 0.92 | 0.91 | | | |
| All | 0.93 | 1.00 | 0.97 | 0.93 | 0.96 | 0.96 | 0.92 | 0.92 | 0.94 | 0.91 | 0.89 | 0.93 | | | |
| COMMUNITY AND REGIONAL PLANNING | | | | | | | | | | | | | | | |
| Average Salaries | | | | | | | | | | | | | | | |
| Professor | \$118,778 | \$118,778 | \$118,778 | \$91,088 | \$97,588 | \$101,053 | \$109,552 | \$113,538 | \$113,538 | \$116,193 | \$123,768 | \$124,482 | 3 | \$129,671 | \$132,392 |
| Associate Professor | \$74,083 | \$74,640 | \$76,946 | \$76,346 | \$81,787 | \$85,765 | \$88,743 | \$91,546 | \$94,772 | \$87,369 | \$87,840 | \$88,861 | 5 | \$93,823 | \$92,938 |
| Assistant Professor | \$58,366 | \$63,179 | \$60,149 | \$62,268 | \$65,799 | \$65,283 | \$65,080 | \$67,308 | \$66,433 | \$66,545 | \$68,995 | \$69,480 | 3 | \$77,848 | \$77,913 |
| All | \$70,694 | \$74,450 | \$74,410 | \$71,801 | \$77,743 | \$81,906 | \$79,619 | \$82,324 | \$84,356 | \$83,144 | \$92,499 | \$93,290 | 11 | \$99,243 | \$99,600 |
| Index | | | | | | | | | | | | | | | |
| Professor | 1.10 | 1.16 | 1.16 | 0.81 | 0.84 | 0.88 | 0.87 | 0.94 | 0.95 | 0.94 | 0.95 | 0.94 | | | |
| Associate Professor | 0.95 | 1.05 | 1.06 | 0.96 | 1.01 | 1.06 | 1.06 | 1.04 | 1.10 | 0.96 | 0.94 | 0.96 | | | |
| Assistant Professor | 0.89 | 1.00 | 0.99 | 0.95 | 0.98 | 0.95 | 0.93 | 0.91 | 0.88 | 0.88 | 0.89 | 0.89 | | | |
| All | 0.95 | 1.05 | 1.05 | 0.91 | 0.94 | 0.97 | 0.95 | 0.95 | 0.97 | 0.93 | 0.93 | 0.94 | | | |
| GRAPHIC DESIGN, INDUSTRIAL DESIGN, INTERIOR DESIGN & ART AND VISUAL CULTURE⁸ | | | | | | | | | | | | | | | |
| Average Salaries | | | | | | | | | | | | | | | |
| Professor | \$86,444 | \$83,607 | \$84,792 | \$93,271 | \$89,949 | \$88,578 | \$92,684 | \$84,553 | \$86,971 | \$97,670 | \$100,756 | \$100,156 | 10 | \$117,985 | \$110,467 |
| Associate Professor | \$61,886 | \$62,707 | \$63,279 | \$65,040 | \$67,765 | \$73,156 | \$73,670 | \$74,008 | \$77,245 | \$78,843 | \$81,527 | \$80,143 | 19 | \$89,521 | \$85,979 |
| Assistant Professor | \$53,792 | \$55,298 | \$55,934 | \$57,739 | \$59,660 | \$61,229 | \$60,852 | \$63,106 | \$64,504 | \$63,841 | \$65,618 | \$64,865 | 14 | \$76,914 | \$74,266 |
| All | \$63,185 | \$63,444 | \$64,774 | \$67,223 | \$69,404 | \$72,338 | \$72,778 | \$72,508 | \$74,891 | \$78,331 | \$80,819 | \$79,823 | 43 | \$92,036 | \$87,860 |
| Index | | | | | | | | | | | | | | | |
| Professor | 0.98 | 0.93 | 0.94 | 0.99 | 0.93 | 0.84 | 0.96 | 0.81 | 0.77 | 0.85 | 0.85 | 0.91 | | | |
| Associate Professor | 0.90 | 0.89 | 0.87 | 0.87 | 0.89 | 0.92 | 0.96 | 0.93 | 0.93 | 0.91 | 0.91 | 0.93 | | | |
| Assistant Professor | 0.97 | 0.96 | 0.92 | 0.94 | 0.96 | 0.91 | 0.95 | 0.92 | 0.90 | 0.87 | 0.85 | 0.87 | | | |
| All | 0.93 | 0.91 | 0.89 | 0.89 | 0.91 | 0.90 | 0.96 | 0.89 | 0.88 | 0.87 | 0.88 | 0.91 | | | |

Iowa State University
Peer Land Grant Universities Faculty Salary Comparisons
2009-2010 through 2019-2020

| COLLEGE/DEPARTMENT | 2009-2010 | 2010-2011 | 2011-2012 | 2012-2013 | 2013-2014 | 2014-2015 | 2015-2016 | 2016-2017 | 2017-2018 | 2018-2019 | 2019-2020 | | | PEER | | |
|-------------------------------------|-----------|-----------|-----------|-----------|-----------|-----------|-----------|-----------|-----------|-----------|------------------------|-----------------------|----|-----------|----------------|---------------|
| | | | | | | | | | | | ISU | | | COUNT | AVERAGE SALARY | MEDIAN SALARY |
| | | | | | | | | | | | AVERAGE SALARY & INDEX | MEDIAN SALARY & INDEX | | | | |
| COLLEGE OF DESIGN, continued | | | | | | | | | | | | | | | | |
| LANDSCAPE ARCHITECTURE | | | | | | | | | | | | | | | | |
| Average Salaries | | | | | | | | | | | | | | | | |
| Professor | \$97,983 | \$97,056 | \$101,993 | \$113,739 | \$102,438 | \$93,638 | \$101,954 | \$97,819 | \$100,193 | \$101,195 | \$103,219 | \$102,912 | 3 | \$123,991 | \$121,761 | |
| Associate Professor | \$73,991 | \$77,415 | \$78,438 | \$80,255 | \$83,394 | \$87,715 | \$88,142 | \$94,258 | \$92,807 | \$93,735 | \$93,106 | \$94,577 | 6 | \$88,118 | \$88,657 | |
| Assistant Professor | | \$58,000 | \$61,015 | \$62,117 | \$64,407 | \$64,425 | \$64,726 | \$67,086 | \$66,706 | \$66,280 | \$67,135 | \$66,025 | 4 | \$74,933 | \$75,036 | |
| All | \$82,715 | \$84,578 | \$79,801 | \$79,747 | \$79,952 | \$77,667 | \$83,790 | \$85,348 | \$87,703 | \$86,448 | \$87,449 | \$87,715 | 13 | \$92,339 | \$92,105 | |
| Index | | | | | | | | | | | | | | | | |
| Professor | 0.97 | 0.92 | 0.99 | 1.06 | 0.92 | 0.87 | 0.96 | 0.91 | 0.89 | 0.86 | 0.83 | 0.85 | | | | |
| Associate Professor | 1.03 | 1.03 | 1.08 | 1.00 | 1.01 | 1.10 | 1.09 | 1.14 | 1.07 | 1.07 | 1.06 | 1.07 | | | | |
| Assistant Professor | | 0.95 | 1.02 | 0.91 | 0.94 | 0.89 | 0.92 | 0.93 | 0.92 | 0.76 | 0.90 | 0.88 | | | | |
| All | 1.00 | 0.96 | 1.04 | 0.99 | 0.97 | 0.99 | 1.00 | 1.00 | 0.97 | 0.91 | 0.95 | 0.95 | | | | |
| DESIGN SUMMARY | | | | | | | | | | | | | | | | |
| Average Salaries | | | | | | | | | | | | | | | | |
| Professor | \$95,255 | \$94,991 | \$95,519 | \$98,397 | \$98,388 | \$98,696 | \$101,522 | \$97,722 | \$97,126 | \$102,369 | \$106,306 | \$108,925 | 22 | \$123,616 | \$119,317 | |
| Associate Professor | \$68,795 | \$69,835 | \$69,776 | \$70,706 | \$73,764 | \$77,866 | \$78,819 | \$80,075 | \$82,572 | \$85,120 | \$85,212 | \$84,902 | 37 | \$90,623 | \$88,983 | |
| Assistant Professor | \$57,176 | \$59,200 | \$59,454 | \$62,032 | \$63,712 | \$63,761 | \$63,720 | \$66,000 | \$66,605 | \$66,303 | \$67,566 | \$67,045 | 26 | \$77,029 | \$75,782 | |
| All | \$71,806 | \$72,507 | \$72,962 | \$74,117 | \$76,495 | \$77,966 | \$78,998 | \$79,464 | \$79,748 | \$82,004 | \$85,274 | \$85,658 | 85 | \$95,004 | \$92,796 | |
| Index | | | | | | | | | | | | | | | | |
| Professor | 0.93 | 0.95 | 0.96 | 0.91 | 0.91 | 0.88 | 0.91 | 0.86 | 0.83 | 0.86 | 0.86 | 0.91 | | | | |
| Associate Professor | 0.95 | 0.96 | 0.95 | 0.92 | 0.94 | 0.97 | 0.99 | 0.98 | 0.98 | 0.96 | 0.94 | 0.95 | | | | |
| Assistant Professor | 0.95 | 0.98 | 0.98 | 0.94 | 0.96 | 0.93 | 0.94 | 0.93 | 0.92 | 0.87 | 0.88 | 0.88 | | | | |
| All | 0.94 | 0.96 | 0.95 | 0.92 | 0.93 | 0.93 | 0.95 | 0.92 | 0.92 | 0.89 | 0.90 | 0.92 | | | | |

Iowa State University
Peer Land Grant Universities Faculty Salary Comparisons
2009-2010 through 2019-2020

| COLLEGE/DEPARTMENT | 2009-2010 | 2010-2011 | 2011-2012 | 2012-2013 | 2013-2014 | 2014-2015 | 2015-2016 | 2016-2017 | 2017-2018 | 2018-2019 | 2019-2020 | | | PEER | |
|---|-----------|-----------|-----------|-----------|-----------|-----------|-----------|-----------|-----------|-----------|------------------------------|-----------------------------|-------|-------------------|------------------|
| | | | | | | | | | | | ISU | | | AVERAGE SALARY | MEDIAN SALARY |
| | | | | | | | | | | | AVERAGE SALARY & INDEX | MEDIAN SALARY & INDEX | COUNT | | |
| -COLLEGE OF ENGINEERING- | | | | | | | | | | | | | | | |
| AEROSPACE ENGINEERING | | | | | | | | | | | | | | | |
| Average Salaries | | | | | | | | | | | | | | | |
| Professor | \$128,372 | \$130,545 | \$136,308 | \$143,329 | \$145,075 | \$155,837 | \$153,369 | \$161,220 | \$156,392 | \$158,782 | \$161,466 | \$171,085 | 10 | \$175,062 | \$167,793 |
| Associate Professor | \$91,792 | \$96,090 | \$92,113 | \$95,361 | \$95,415 | \$97,552 | \$98,370 | \$103,490 | \$103,490 | \$105,803 | \$108,998 | \$103,255 | 6 | \$121,462 | \$116,884 |
| Assistant Professor | \$80,704 | \$81,704 | \$85,019 | \$85,657 | \$87,522 | \$89,611 | \$89,113 | \$93,075 | \$93,563 | \$92,195 | \$96,662 | \$93,950 | 8 | \$101,966 | \$100,996 |
| All | \$107,627 | \$112,083 | \$119,270 | \$119,853 | \$123,089 | \$127,104 | \$123,021 | \$125,676 | \$124,841 | \$123,342 | \$126,748 | \$128,416 | 24 | \$137,296 | \$132,800 |
| Index | | | | | | | | | | | | | | | |
| Professor | 0.98 | 1.00 | 1.02 | 1.01 | 0.99 | 1.00 | 1.00 | 1.01 | 0.95 | 0.95 | 0.92 | 1.02 | | | |
| Associate Professor | 0.96 | 1.07 | 0.98 | 0.98 | 0.94 | 0.93 | 0.91 | 0.92 | 0.89 | 0.89 | 0.90 | 0.88 | | | |
| Assistant Professor | 0.99 | 1.00 | 1.03 | 0.98 | 1.01 | 0.95 | 0.97 | 0.98 | 0.95 | 0.92 | 0.95 | 0.93 | | | |
| All | 0.98 | 1.02 | 1.02 | 1.00 | 0.99 | 0.98 | 0.98 | 0.99 | 0.94 | 0.93 | 0.92 | 0.97 | | | |
| AGRICULTURAL AND BIOSYSTEMS ENGINEERING ¹ | | | | | | | | | | | | | | | |
| Average Salaries | | | | | | | | | | | | | | | |
| Professor | \$113,927 | \$113,927 | \$150,000 | \$153,750 | \$168,364 | \$136,185 | \$136,513 | \$142,246 | \$200,000 | \$139,583 | \$151,981 | \$160,024 | 15 | \$146,753 | \$139,537 |
| Associate Professor | | | | | | \$95,349 | \$96,570 | \$99,846 | \$105,330 | \$96,950 | \$99,489 | \$108,906 | 9 | \$110,081 | \$105,684 |
| Assistant Professor | \$76,660 | \$85,000 | \$88,000 | \$90,640 | \$93,586 | \$84,334 | \$83,418 | \$85,696 | \$87,055 | \$86,024 | \$88,737 | \$88,737 | 4 | \$94,613 | \$89,792 |
| All | \$95,294 | \$99,464 | \$119,000 | \$122,195 | \$130,975 | \$113,379 | \$112,208 | \$117,875 | \$113,299 | \$116,316 | \$126,074 | \$133,409 | 28 | \$127,517 | \$121,549 |
| Index | | | | | | | | | | | | | | | |
| Professor | 1.03 | 1.06 | 1.31 | 1.27 | 1.35 | 1.04 | 1.05 | 1.02 | 1.41 | 0.96 | 1.04 | 1.15 | | | |
| Associate Professor | | | | | | 1.01 | 1.00 | 0.96 | 0.98 | 0.90 | 0.90 | 1.03 | | | |
| Assistant Professor | 1.03 | 1.18 | 1.18 | 1.16 | 1.13 | 0.99 | 0.97 | 1.00 | 0.98 | 0.95 | 0.94 | 0.99 | | | |
| All | 1.03 | 1.11 | 1.26 | 1.22 | 1.26 | 1.02 | 1.02 | 1.00 | 1.10 | 0.94 | 0.99 | 1.10 | | | |
| CHEMICAL & BIOLOGICAL ENGINEERING | | | | | | | | | | | | | | | |
| Average Salaries | | | | | | | | | | | | | | | |
| Professor | \$142,195 | \$151,916 | \$151,873 | \$152,315 | \$165,773 | \$175,583 | \$172,591 | \$179,318 | \$180,339 | \$171,942 | \$178,162 | \$181,955 | 8 | \$180,541 | \$180,978 |
| Associate Professor | \$104,684 | \$99,735 | \$101,235 | \$103,256 | \$104,996 | \$109,493 | \$110,516 | \$112,493 | \$111,195 | \$111,582 | \$113,916 | \$111,376 | 8 | \$120,603 | \$122,666 |
| Assistant Professor | \$ 85,220 | \$86,715 | \$88,295 | \$90,401 | \$90,720 | \$91,834 | \$92,202 | \$94,002 | \$94,002 | \$93,623 | \$98,092 | \$98,574 | 4 | \$102,461 | \$100,523 |
| All | \$116,141 | \$125,018 | \$127,216 | \$126,835 | \$137,388 | \$134,942 | \$135,100 | \$137,942 | \$134,555 | \$131,236 | \$136,449 | \$137,047 | 20 | \$140,950 | \$141,562 |
| Index | | | | | | | | | | | | | | | |
| Professor | 1.00 | 1.05 | 1.04 | 1.01 | 1.09 | 1.10 | 1.05 | 1.05 | 1.03 | 0.97 | 0.99 | 1.01 | | | |
| Associate Professor | 1.12 | 1.05 | 1.03 | 1.03 | 1.05 | 1.06 | 1.04 | 1.03 | 0.99 | 0.95 | 0.94 | 0.91 | | | |
| Assistant Professor | 1.05 | 1.08 | 1.07 | 1.04 | 1.03 | 1.01 | 0.98 | 0.96 | 0.96 | 0.94 | 0.96 | 0.98 | | | |
| All | 1.03 | 1.06 | 1.05 | 1.02 | 1.07 | 1.07 | 1.03 | 1.03 | 1.01 | 0.96 | 0.97 | 0.97 | | | |

Iowa State University
Peer Land Grant Universities Faculty Salary Comparisons
2009-2010 through 2019-2020

| COLLEGE/DEPARTMENT | 2009-2010 | 2010-2011 | 2011-2012 | 2012-2013 | 2013-2014 | 2014-2015 | 2015-2016 | 2016-2017 | 2017-2018 | 2018-2019 | 2019-2020 | | | PEER | |
|---|-----------|-----------|-----------|-----------|-----------|-----------|-----------|-----------|-----------|-----------|------------------------|-----------------------|-------|----------------|---------------|
| | | | | | | | | | | | ISU | | | AVERAGE SALARY | MEDIAN SALARY |
| | | | | | | | | | | | AVERAGE SALARY & INDEX | MEDIAN SALARY & INDEX | COUNT | | |
| COLLEGE OF ENGINEERING, continued | | | | | | | | | | | | | | | |
| CIVIL, CONSTRUCTION, AND ENVIRONMENTAL ENGINEERING | | | | | | | | | | | | | | | |
| Average Salaries | | | | | | | | | | | | | | | |
| Professor | \$127,681 | \$128,931 | \$133,183 | \$132,312 | \$137,645 | \$144,367 | \$142,072 | \$152,861 | \$154,802 | \$160,766 | \$165,764 | \$150,185 | 10 | \$153,910 | \$149,036 |
| Associate Professor | \$94,421 | \$94,760 | \$97,779 | \$95,554 | \$98,780 | \$102,652 | \$103,751 | \$106,768 | \$108,768 | \$109,648 | \$114,846 | \$114,491 | 9 | \$116,128 | \$115,083 |
| Assistant Professor | \$79,415 | \$85,325 | \$85,411 | \$86,220 | \$87,202 | \$89,270 | \$89,727 | \$91,991 | \$91,923 | \$94,800 | \$97,890 | \$96,973 | 10 | \$99,822 | \$97,452 |
| All | \$104,808 | \$108,057 | \$113,103 | \$114,247 | \$118,656 | \$119,443 | \$115,759 | \$118,833 | \$115,182 | \$119,289 | \$126,557 | \$120,759 | 29 | \$123,534 | \$120,711 |
| Index | | | | | | | | | | | | | | | |
| Professor | 1.03 | 1.04 | 1.04 | 0.99 | 1.03 | 1.07 | 1.04 | 1.08 | 1.07 | 1.08 | 1.08 | 1.01 | | | |
| Associate Professor | 1.03 | 1.05 | 1.03 | 0.98 | 1.00 | 1.01 | 1.01 | 1.01 | 1.00 | 0.97 | 0.99 | 0.99 | | | |
| Assistant Professor | 1.00 | 1.08 | 1.01 | 1.00 | 0.99 | 1.00 | 1.00 | 1.00 | 0.97 | 0.98 | 0.98 | 1.00 | | | |
| All | 1.03 | 1.05 | 1.03 | 0.99 | 1.01 | 1.04 | 1.02 | 1.04 | 1.02 | 1.02 | 1.02 | 1.00 | | | |
| ELECTRICAL AND COMPUTER ENGINEERING | | | | | | | | | | | | | | | |
| Average Salaries | | | | | | | | | | | | | | | |
| Professor | \$141,114 | \$146,026 | \$145,807 | \$148,645 | \$146,477 | \$149,300 | \$147,195 | \$149,134 | \$150,551 | \$153,445 | \$155,048 | \$151,852 | 26 | \$171,726 | \$169,168 |
| Associate Professor | \$102,248 | \$102,931 | \$102,149 | \$100,862 | \$102,491 | \$106,321 | \$103,723 | \$104,927 | \$106,361 | \$109,146 | \$108,110 | \$104,464 | 14 | \$122,509 | \$121,470 |
| Assistant Professor | \$84,187 | \$86,400 | \$86,065 | \$87,057 | \$87,211 | \$83,870 | \$83,383 | \$85,837 | \$91,000 | \$94,140 | \$98,052 | \$97,920 | 6 | \$105,856 | \$102,554 |
| All | \$104,630 | \$109,652 | \$110,370 | \$115,091 | \$116,726 | \$121,906 | \$119,468 | \$124,629 | \$126,965 | \$129,012 | \$133,328 | \$130,395 | 46 | \$148,155 | \$145,962 |
| Index | | | | | | | | | | | | | | | |
| Professor | 1.05 | 1.06 | 1.04 | 1.02 | 0.99 | 1.01 | 0.94 | 0.93 | 0.92 | 0.92 | 0.90 | 0.90 | | | |
| Associate Professor | 1.05 | 1.05 | 1.02 | 0.98 | 0.97 | 0.97 | 0.93 | 0.92 | 0.92 | 0.94 | 0.88 | 0.86 | | | |
| Assistant Professor | 0.96 | 1.00 | 0.98 | 0.94 | 0.96 | 0.90 | 0.89 | 0.88 | 0.92 | 0.94 | 0.93 | 0.95 | | | |
| All | 1.02 | 1.04 | 1.01 | 0.99 | 0.97 | 0.99 | 0.93 | 0.93 | 0.92 | 0.93 | 0.90 | 0.89 | | | |
| INDUSTRIAL AND MANUFACTURING SYSTEMS ENGINEERING | | | | | | | | | | | | | | | |
| Average Salaries | | | | | | | | | | | | | | | |
| Professor | \$120,927 | \$124,027 | \$132,242 | \$130,276 | \$133,364 | \$141,836 | \$137,340 | \$171,295 | \$181,763 | \$184,581 | \$181,637 | \$186,010 | 4 | \$173,483 | \$176,530 |
| Associate Professor | \$93,676 | \$95,434 | \$97,209 | \$104,403 | \$104,767 | \$106,062 | \$108,167 | \$112,003 | \$113,101 | \$116,673 | \$119,708 | \$119,844 | 9 | \$121,297 | \$127,514 |
| Assistant Professor | \$71,799 | \$73,602 | \$74,468 | \$84,797 | \$89,229 | \$91,727 | \$91,035 | \$96,550 | \$97,853 | \$85,645 | \$87,357 | \$86,108 | 4 | \$101,731 | \$102,542 |
| All | \$96,843 | \$98,944 | \$100,046 | \$105,970 | \$109,003 | \$109,186 | \$104,401 | \$115,551 | \$123,116 | \$121,356 | \$126,668 | \$127,475 | 17 | \$128,972 | \$133,171 |
| Index | | | | | | | | | | | | | | | |
| Professor | 0.87 | 0.91 | 0.94 | 0.89 | 0.91 | 0.93 | 0.91 | 1.07 | 1.10 | 1.09 | 1.05 | 1.05 | | | |
| Associate Professor | 0.93 | 0.96 | 0.96 | 0.97 | 0.95 | 0.97 | 0.96 | 0.96 | 0.98 | 0.95 | 0.99 | 0.94 | | | |
| Assistant Professor | 0.85 | 0.90 | 0.90 | 0.96 | 1.00 | 1.03 | 1.00 | 1.01 | 0.99 | 0.85 | 0.86 | 0.84 | | | |
| All | 0.90 | 0.93 | 0.94 | 0.94 | 0.94 | 0.97 | 0.96 | 0.99 | 1.01 | 0.96 | 0.98 | 0.96 | | | |

Iowa State University
Peer Land Grant Universities Faculty Salary Comparisons
2009-2010 through 2019-2020

| COLLEGE/DEPARTMENT | 2009-2010 | 2010-2011 | 2011-2012 | 2012-2013 | 2013-2014 | 2014-2015 | 2015-2016 | 2016-2017 | 2017-2018 | 2018-2019 | 2019-2020 | | | PEER | |
|--|-----------|-----------|-----------|-----------|-----------|-----------|-----------|-----------|-----------|-----------|------------------------------|-----------------------------|-------|-------------------|------------------|
| | | | | | | | | | | | ISU | | | AVERAGE SALARY | MEDIAN SALARY |
| | | | | | | | | | | | AVERAGE SALARY & INDEX | MEDIAN SALARY & INDEX | COUNT | | |
| COLLEGE OF ENGINEERING, continued | | | | | | | | | | | | | | | |
| MATERIALS SCIENCE AND ENGINEERING | | | | | | | | | | | | | | | |
| Average Salaries | | | | | | | | | | | | | | | |
| Professor | \$152,402 | \$158,391 | \$161,125 | \$158,689 | \$161,430 | \$170,822 | \$177,216 | \$184,654 | \$195,047 | \$184,264 | \$187,017 | \$186,557 | 9 | \$178,773 | \$162,258 |
| Associate Professor | \$97,461 | \$101,041 | \$96,289 | \$99,424 | | \$97,556 | \$119,850 | \$124,289 | \$125,761 | \$139,337 | \$154,655 | \$154,655 | 1 | \$123,042 | \$120,216 |
| Assistant Professor | \$82,121 | \$80,000 | \$84,325 | \$86,708 | \$88,918 | \$92,975 | \$93,905 | \$94,448 | \$93,655 | \$95,843 | \$99,167 | \$98,856 | 4 | \$101,722 | \$99,964 |
| All | \$126,847 | \$134,399 | \$138,183 | \$136,815 | \$149,345 | \$155,481 | \$158,023 | \$154,565 | \$157,075 | \$152,583 | \$159,605 | \$159,221 | 14 | \$152,778 | \$141,457 |
| Index | | | | | | | | | | | | | | | |
| Professor | 1.07 | 1.10 | 1.10 | 1.04 | 1.06 | 1.12 | 1.19 | 1.12 | 1.12 | 1.04 | 1.05 | 1.15 | | | |
| Associate Professor | 1.01 | 1.05 | 0.96 | 0.98 | #DIV/0! | 0.93 | 1.10 | 1.11 | 1.09 | 1.18 | 1.26 | 1.29 | | | |
| Assistant Professor | 1.00 | 0.99 | 1.01 | 0.97 | 1.00 | 1.01 | 1.03 | 1.01 | 0.99 | 0.99 | 0.97 | 0.99 | | | |
| All | 1.05 | 1.08 | 1.07 | 1.02 | 1.05 | 1.10 | 1.16 | 1.10 | 1.09 | 1.05 | 1.04 | 1.13 | | | |
| MECHANICAL ENGINEERING | | | | | | | | | | | | | | | |
| Average Salaries | | | | | | | | | | | | | | | |
| Professor | \$142,622 | \$149,068 | \$155,945 | \$155,491 | \$165,427 | \$171,872 | \$157,583 | \$156,464 | \$156,464 | \$156,230 | \$164,224 | \$149,800 | 13 | \$166,202 | \$164,114 |
| Associate Professor | \$98,090 | \$100,812 | \$99,916 | \$101,144 | \$103,164 | \$104,941 | \$102,248 | \$102,808 | \$103,677 | \$99,887 | \$102,177 | \$101,955 | 13 | \$119,935 | \$118,803 |
| Assistant Professor | \$82,095 | \$84,598 | \$85,637 | \$85,965 | \$87,034 | \$85,691 | \$85,906 | \$88,196 | \$88,144 | \$88,663 | \$88,322 | \$88,603 | 11 | \$102,600 | \$99,066 |
| All | \$108,853 | \$111,065 | \$112,286 | \$115,082 | \$114,962 | \$118,131 | \$112,470 | \$113,200 | \$112,909 | \$115,220 | \$119,858 | \$114,796 | 37 | \$131,038 | \$128,856 |
| Index | | | | | | | | | | | | | | | |
| Professor | 1.08 | 1.13 | 1.16 | 1.10 | 1.14 | 1.16 | 1.03 | 1.02 | 1.00 | 0.96 | 0.99 | 0.91 | | | |
| Associate Professor | 1.04 | 1.08 | 1.06 | 1.01 | 1.03 | 1.01 | 0.95 | 0.93 | 0.91 | 0.86 | 0.85 | 0.86 | | | |
| Assistant Professor | 1.01 | 1.03 | 1.02 | 0.98 | 0.98 | 0.94 | 0.92 | 0.92 | 0.90 | 0.90 | 0.86 | 0.89 | | | |
| All | 1.05 | 1.09 | 1.09 | 1.04 | 1.06 | 1.05 | 0.97 | 0.96 | 0.95 | 0.92 | 0.91 | 0.89 | | | |
| ENGINEERING SUMMARY | | | | | | | | | | | | | | | |
| Average Salaries | | | | | | | | | | | | | | | |
| Professor | \$137,806 | \$142,435 | \$145,700 | \$146,666 | \$151,319 | \$156,053 | \$153,900 | \$159,641 | \$163,176 | \$158,550 | \$163,718 | \$161,972 | 95 | \$166,987 | \$162,184 |
| Associate Professor | \$97,089 | \$98,912 | \$98,950 | \$100,191 | \$101,991 | \$103,693 | \$103,571 | \$106,442 | \$108,646 | \$108,467 | \$109,684 | \$109,308 | 69 | \$119,108 | \$118,585 |
| Assistant Professor | \$82,369 | \$84,784 | \$85,231 | \$86,748 | \$87,989 | \$88,111 | \$87,905 | \$90,714 | \$91,124 | \$91,435 | \$94,225 | \$93,580 | 51 | \$101,565 | \$99,192 |
| All | \$108,656 | \$113,424 | \$116,186 | \$118,111 | \$122,161 | \$123,663 | \$120,715 | \$124,570 | \$124,611 | \$124,007 | \$129,892 | \$128,847 | 215 | \$136,102 | \$133,250 |
| Index | | | | | | | | | | | | | | | |
| Professor | 1.03 | 1.05 | 1.06 | 1.02 | 1.04 | 1.06 | 1.04 | 1.03 | 1.00 | 0.97 | 0.98 | 1.00 | | | |
| Associate Professor | 1.02 | 1.05 | 1.01 | 0.99 | 0.98 | 0.99 | 0.97 | 0.96 | 0.96 | 0.93 | 0.92 | 0.92 | | | |
| Assistant Professor | 0.99 | 1.02 | 1.00 | 0.98 | 0.99 | 0.97 | 0.96 | 0.96 | 0.94 | 0.93 | 0.93 | 0.94 | | | |
| All | 1.02 | 1.05 | 1.04 | 1.01 | 1.02 | 1.03 | 1.00 | 1.00 | 0.98 | 0.95 | 0.95 | 0.97 | | | |

Iowa State University
Peer Land Grant Universities Faculty Salary Comparisons
2009-2010 through 2019-2020

| COLLEGE/DEPARTMENT | 2009-2010 | 2010-2011 | 2011-2012 | 2012-2013 | 2013-2014 | 2014-2015 | 2015-2016 | 2016-2017 | 2017-2018 | 2018-2019 | 2019-2020 | | | PEER | |
|--|-----------|-----------|-----------|-----------|-----------|-----------|-----------|-----------|-----------|-----------|------------------------|-----------------------|-------|----------------|---------------|
| | | | | | | | | | | | ISU | | | PEER | |
| | | | | | | | | | | | AVERAGE SALARY & INDEX | MEDIAN SALARY & INDEX | COUNT | AVERAGE SALARY | MEDIAN SALARY |
| -COLLEGE OF HUMAN SCIENCES- | | | | | | | | | | | | | | | |
| APPAREL, EVENTS, AND HOSPITALITY MANAGEMENT⁹ | | | | | | | | | | | | | | | |
| Average Salaries | | | | | | | | | | | | | | | |
| Professor | \$99,486 | \$106,818 | \$111,256 | \$116,265 | \$120,765 | \$125,508 | \$121,506 | \$118,655 | \$135,244 | \$125,744 | \$123,318 | \$138,494 | 6 | \$151,950 | \$148,491 |
| Associate Professor | \$72,894 | \$74,991 | \$72,251 | \$74,647 | \$80,605 | \$85,672 | \$85,016 | \$83,029 | \$87,977 | \$87,478 | \$88,315 | \$85,697 | 10 | \$108,557 | \$107,969 |
| Assistant Professor | \$62,069 | \$63,028 | \$65,645 | \$66,797 | \$68,036 | \$70,872 | \$70,883 | \$73,614 | \$73,872 | \$75,722 | \$78,293 | \$78,803 | 9 | \$87,462 | \$87,063 |
| All | \$72,188 | \$75,443 | \$77,249 | \$80,444 | \$82,231 | \$86,188 | \$87,318 | \$85,535 | \$93,115 | \$91,959 | \$93,108 | \$95,886 | 25 | \$111,377 | \$110,168 |
| Index | | | | | | | | | | | | | | | |
| Professor | 0.90 | 0.94 | 0.96 | 1.01 | 1.02 | 0.98 | 0.90 | 0.84 | 0.90 | 0.85 | 0.81 | 0.93 | | | |
| Associate Professor | 0.92 | 0.95 | 0.85 | 0.85 | 0.88 | 0.96 | 0.95 | 0.84 | 0.86 | 0.81 | 0.81 | 0.79 | | | |
| Assistant Professor | 0.93 | 0.92 | 0.91 | 0.90 | 0.84 | 0.93 | 0.88 | 0.87 | 0.83 | 0.85 | 0.90 | 0.91 | | | |
| All | 0.92 | 0.93 | 0.91 | 0.92 | 0.90 | 0.95 | 0.91 | 0.85 | 0.86 | 0.84 | 0.84 | 0.87 | | | |
| CURRICULUM AND INSTRUCTION¹⁰ | | | | | | | | | | | | | | | |
| Average Salaries | | | | | | | | | | | | | | | |
| Professor | \$92,026 | \$98,057 | \$96,767 | | | | | | | | | | | | |
| Associate Professor | \$68,365 | \$68,593 | \$71,626 | | | | | | | | | | | | |
| Assistant Professor | \$58,258 | \$58,606 | \$62,773 | | | | | | | | | | | | |
| All | \$73,958 | \$74,359 | \$73,266 | | | | | | | | | | | | |
| Index | | | | | | | | | | | | | | | |
| Professor | 0.89 | 0.99 | 0.93 | | | | | | | | | | | | |
| Associate Professor | 0.90 | 0.94 | 0.96 | | | | | | | | | | | | |
| Assistant Professor | 0.94 | 0.97 | 1.00 | | | | | | | | | | | | |
| All | 0.90 | 0.96 | 0.96 | | | | | | | | | | | | |
| EDUCATIONAL LEADERSHIP AND POLICY STUDIES¹⁰ | | | | | | | | | | | | | | | |
| Average Salaries | | | | | | | | | | | | | | | |
| Professor | \$114,676 | \$107,770 | \$110,800 | | | | | | | | | | | | |
| Associate Professor | \$77,323 | \$78,611 | \$93,210 | | | | | | | | | | | | |
| Assistant Professor | \$60,496 | \$58,142 | \$65,000 | | | | | | | | | | | | |
| All | \$89,250 | \$83,452 | \$86,146 | | | | | | | | | | | | |
| Index | | | | | | | | | | | | | | | |
| Professor | 0.97 | 0.93 | 0.99 | | | | | | | | | | | | |
| Associate Professor | 0.96 | 0.99 | 1.17 | | | | | | | | | | | | |
| Assistant Professor | 0.94 | 0.91 | 1.02 | | | | | | | | | | | | |
| All | 0.96 | 0.94 | 1.05 | | | | | | | | | | | | |

Iowa State University
Peer Land Grant Universities Faculty Salary Comparisons
2009-2010 through 2019-2020

| COLLEGE/DEPARTMENT | 2009-2010 | 2010-2011 | 2011-2012 | 2012-2013 | 2013-2014 | 2014-2015 | 2015-2016 | 2016-2017 | 2017-2018 | 2018-2019 | 2019-2020 | | | PEER | | |
|---|-----------|-----------|-----------|-----------|-----------|-----------|-----------|-----------|-----------|-----------|------------------------|-----------------------|----|-----------|----------------|---------------|
| | | | | | | | | | | | ISU | | | COUNT | AVERAGE SALARY | MEDIAN SALARY |
| | | | | | | | | | | | AVERAGE SALARY & INDEX | MEDIAN SALARY & INDEX | | | | |
| COLLEGE OF HUMAN SCIENCES, continued | | | | | | | | | | | | | | | | |
| FOOD SCIENCE AND HUMAN NUTRITION --H SCI¹ | | | | | | | | | | | | | | | | |
| Average Salaries | | | | | | | | | | | | | | | | |
| Professor | \$91,501 | \$93,704 | \$95,355 | \$96,023 | \$95,650 | \$109,875 | \$111,659 | \$115,663 | \$108,103 | \$109,759 | \$101,436 | \$101,436 | 6 | \$140,019 | \$142,825 | |
| Associate Professor | \$76,241 | \$76,786 | \$80,486 | \$82,492 | \$85,833 | \$89,129 | \$88,253 | \$90,284 | \$92,740 | \$92,204 | \$94,898 | \$88,641 | 12 | \$107,076 | \$101,747 | |
| Assistant Professor | \$69,419 | \$71,956 | \$66,900 | \$73,817 | \$75,625 | \$77,151 | \$77,313 | \$81,470 | \$82,048 | \$83,196 | \$84,146 | \$81,113 | 10 | \$90,672 | \$88,383 | |
| All | \$78,036 | \$80,239 | \$81,939 | \$84,653 | \$85,735 | \$92,170 | \$92,446 | \$97,015 | \$94,868 | \$94,768 | \$92,459 | \$88,694 | 28 | \$108,277 | \$105,777 | |
| Index | | | | | | | | | | | | | | | | |
| Professor | 0.86 | 0.88 | 0.85 | 0.82 | 0.81 | 0.93 | 0.90 | 0.91 | 0.82 | 0.78 | 0.72 | 0.71 | | | | |
| Associate Professor | 1.02 | 0.97 | 0.98 | 0.99 | 1.03 | 1.04 | 1.06 | 0.99 | 0.98 | 0.95 | 0.89 | 0.87 | | | | |
| Assistant Professor | 1.00 | 1.00 | 0.92 | 0.97 | 1.03 | 0.97 | 0.96 | 0.97 | 0.93 | 0.94 | 0.93 | 0.92 | | | | |
| All | 0.96 | 0.95 | 0.93 | 0.92 | 0.96 | 0.98 | 0.99 | 0.95 | 0.91 | 0.88 | 0.85 | 0.84 | | | | |
| HUMAN DEVELOPMENT AND FAMILY STUDIES | | | | | | | | | | | | | | | | |
| Average Salaries | | | | | | | | | | | | | | | | |
| Professor | \$100,166 | \$109,786 | \$119,626 | \$118,451 | \$121,293 | \$124,848 | \$130,293 | \$131,636 | \$127,859 | \$129,138 | \$124,229 | \$117,304 | 8 | \$139,399 | \$136,964 | |
| Associate Professor | \$70,503 | \$71,306 | \$73,800 | \$75,442 | \$79,013 | \$82,802 | \$84,482 | \$85,201 | \$85,014 | \$85,959 | \$84,452 | 83310 | 7 | \$98,025 | \$96,786 | |
| Assistant Professor | \$64,329 | \$65,178 | \$65,622 | \$66,760 | \$67,884 | \$69,766 | \$70,379 | \$72,250 | \$71,330 | \$71,923 | \$73,370 | 72877.23 | 7 | \$83,455 | \$81,395 | |
| All | \$84,717 | \$86,430 | \$83,840 | \$84,977 | \$85,131 | \$87,226 | \$89,688 | \$92,269 | \$89,453 | \$91,731 | \$95,390 | \$92,352 | 22 | \$108,434 | \$106,499 | |
| Index | | | | | | | | | | | | | | | | |
| Professor | 0.89 | 0.98 | 1.03 | 1.00 | 1.05 | 1.01 | 1.05 | 0.95 | 0.93 | 0.93 | 0.89 | 0.86 | | | | |
| Associate Professor | 0.90 | 0.91 | 0.90 | 0.90 | 0.95 | 0.96 | 0.96 | 0.98 | 0.93 | 0.88 | 0.86 | 0.86 | | | | |
| Assistant Professor | 0.99 | 0.99 | 0.98 | 0.95 | 0.96 | 0.98 | 0.96 | 0.94 | 0.91 | 0.79 | 0.88 | 0.90 | | | | |
| All | 0.90 | 0.95 | 0.96 | 0.95 | 0.99 | 0.98 | 0.99 | 0.95 | 0.92 | 0.86 | 0.88 | 0.87 | | | | |
| KINESIOLOGY⁴ | | | | | | | | | | | | | | | | |
| Average Salaries | | | | | | | | | | | | | | | | |
| Professor | \$95,469 | \$96,806 | \$96,640 | \$99,019 | \$103,192 | \$107,263 | \$109,458 | \$114,439 | \$116,606 | \$112,369 | \$114,442 | \$136,851 | 8 | \$131,341 | \$125,797 | |
| Associate Professor | \$70,174 | \$78,712 | \$77,696 | \$74,801 | \$79,288 | \$81,415 | \$82,229 | \$84,696 | \$85,397 | \$87,642 | \$89,369 | \$85,435 | 4 | \$90,572 | \$89,118 | |
| Assistant Professor | \$54,753 | \$55,320 | \$58,493 | \$60,958 | \$62,718 | \$66,304 | \$67,217 | \$71,483 | \$73,225 | \$73,958 | \$75,054 | \$76,749 | 5 | \$77,567 | \$76,688 | |
| All | \$75,903 | \$80,162 | \$79,983 | \$84,026 | \$84,920 | \$84,751 | \$86,146 | \$91,502 | \$94,053 | \$94,313 | \$96,958 | \$107,076 | 17 | \$105,932 | \$102,723 | |
| Index | | | | | | | | | | | | | | | | |
| Professor | 0.95 | 0.99 | 0.96 | 0.97 | 0.94 | 0.93 | 0.92 | 0.87 | 0.89 | 0.90 | 0.87 | 1.09 | | | | |
| Associate Professor | 0.97 | 1.11 | 1.07 | 0.97 | 1.01 | 1.03 | 1.03 | 0.99 | 0.99 | 1.02 | 0.99 | 0.96 | | | | |
| Assistant Professor | 0.86 | 0.88 | 0.91 | 0.95 | 0.94 | 0.96 | 0.99 | 0.96 | 0.98 | 1.01 | 0.97 | 1.00 | | | | |
| All | 0.94 | 1.01 | 0.97 | 0.97 | 0.95 | 0.96 | 0.96 | 0.92 | 0.93 | 0.95 | 0.92 | 1.04 | | | | |

Iowa State University
Peer Land Grant Universities Faculty Salary Comparisons
2009-2010 through 2019-2020

| COLLEGE/DEPARTMENT | 2009-2010 | 2010-2011 | 2011-2012 | 2012-2013 | 2013-2014 | 2014-2015 | 2015-2016 | 2016-2017 | 2017-2018 | 2018-2019 | 2019-2020 | | | PEER | |
|---|-----------|-----------|-----------|-----------|-----------|-----------|-----------|-----------|-----------|-----------|------------------------|-----------------------|-------|----------------|---------------|
| | | | | | | | | | | | ISU | | | PEER | |
| | | | | | | | | | | | AVERAGE SALARY & INDEX | MEDIAN SALARY & INDEX | COUNT | AVERAGE SALARY | MEDIAN SALARY |
| COLLEGE OF HUMAN SCIENCES, continued | | | | | | | | | | | | | | | |
| SCHOOL OF EDUCATION ¹⁰ | | | | | | | | | | | | | | | |
| Average Salaries | | | | | | | | | | | | | | | |
| Professor | | | | \$109,355 | \$115,557 | \$108,168 | \$112,857 | \$118,602 | \$132,735 | \$138,986 | \$122,692 | \$139,047 | 5 | \$134,912 | \$134,068 |
| Associate Professor | | | | \$78,003 | \$80,210 | \$82,939 | \$82,577 | \$86,102 | \$85,742 | \$84,916 | \$84,100 | \$84,051 | 10 | \$94,734 | \$92,856 |
| Assistant Professor | | | | \$65,427 | \$67,017 | \$68,773 | \$69,225 | \$71,053 | \$70,080 | \$70,545 | \$71,235 | \$72,079 | 21 | \$79,553 | \$78,192 |
| All | | | | \$80,795 | \$86,029 | \$82,204 | \$84,381 | \$82,999 | \$79,869 | \$80,488 | \$81,956 | \$84,706 | 36 | \$91,459 | \$90,026 |
| Index | | | | | | | | | | | | | | | |
| Professor | | | | 0.97 | 1.06 | 0.87 | 0.94 | 0.96 | 1.04 | 0.98 | 0.91 | 1.04 | | | |
| Associate Professor | | | | 0.98 | 1.01 | 1.00 | 0.96 | 0.98 | 0.96 | 0.91 | 0.89 | 0.91 | | | |
| Assistant Professor | | | | 0.99 | 1.00 | 0.98 | 0.96 | 0.94 | 0.92 | 0.92 | 0.90 | 0.92 | | | |
| All | | | | 0.98 | 1.02 | 0.95 | 0.96 | 0.96 | 0.94 | 0.92 | 0.90 | 0.94 | | | |
| HUMAN SCIENCES SUMMARY | | | | | | | | | | | | | | | |
| Average Salaries | | | | | | | | | | | | | | | |
| Professor | \$99,912 | \$102,799 | \$104,783 | \$107,549 | \$112,400 | \$113,019 | \$115,951 | \$119,436 | \$123,221 | \$118,950 | \$117,314 | \$126,305 | 33 | \$139,160 | \$136,980 |
| Associate Professor | \$71,976 | \$73,615 | \$76,771 | \$77,464 | \$80,933 | \$85,149 | \$85,075 | \$86,439 | \$87,290 | \$87,678 | \$88,641 | \$85,723 | 43 | \$101,542 | \$99,144 |
| Assistant Professor | \$61,712 | \$62,005 | \$64,033 | \$66,212 | \$67,646 | \$70,096 | \$70,358 | \$73,244 | \$72,279 | \$74,355 | \$75,594 | \$75,537 | 52 | \$83,394 | \$81,973 |
| All | \$79,023 | \$79,648 | \$79,885 | \$82,381 | \$84,799 | \$86,236 | \$87,701 | \$89,331 | \$88,503 | \$89,927 | \$90,733 | \$92,047 | 128 | \$103,868 | \$101,923 |
| Index | | | | | | | | | | | | | | | |
| Professor | 0.91 | 0.95 | 0.96 | 0.96 | 0.99 | 0.93 | 0.94 | 0.91 | 0.91 | 0.86 | 0.84 | 0.92 | | | |
| Associate Professor | 0.94 | 0.97 | 0.97 | 0.95 | 0.98 | 1.00 | 0.99 | 0.95 | 0.94 | 0.90 | 0.87 | 0.86 | | | |
| Assistant Professor | 0.94 | 0.94 | 0.95 | 0.95 | 0.93 | 0.97 | 0.95 | 0.93 | 0.90 | 0.90 | 0.91 | 0.92 | | | |
| All | 0.93 | 0.96 | 0.96 | 0.95 | 0.97 | 0.96 | 0.96 | 0.93 | 0.91 | 0.89 | 0.87 | 0.90 | | | |

Iowa State University
Peer Land Grant Universities Faculty Salary Comparisons
2009-2010 through 2019-2020

| COLLEGE/DEPARTMENT | 2009-2010 | 2010-2011 | 2011-2012 | 2012-2013 | 2013-2014 | 2014-2015 | 2015-2016 | 2016-2017 | 2017-2018 | 2018-2019 | 2019-2020 | | | PEER | |
|--|-----------|-----------|-----------|-----------|-----------|-----------|-----------|-----------|-----------|-----------|------------------------------|-----------------------------|-------|-------------------|------------------|
| | | | | | | | | | | | ISU | | | AVERAGE SALARY | MEDIAN SALARY |
| | | | | | | | | | | | AVERAGE SALARY & INDEX | MEDIAN SALARY & INDEX | COUNT | | |
| -COLLEGE OF LIBERAL ARTS AND SCIENCES- HUMANITIES | | | | | | | | | | | | | | | |
| ENGLISH | | | | | | | | | | | | | | | |
| Average Salaries | | | | | | | | | | | | | | | |
| Professor | \$78,668 | \$79,365 | \$88,284 | \$90,863 | \$98,218 | \$98,471 | \$101,123 | \$103,226 | \$101,838 | \$102,830 | \$109,292 | \$102,000 | 11 | \$127,845 | \$126,002 |
| Associate Professor | \$61,910 | \$61,912 | \$63,533 | \$66,827 | \$69,804 | \$71,375 | \$71,773 | \$74,242 | \$72,895 | \$73,520 | \$75,671 | \$75,000 | 17 | \$90,538 | \$85,262 |
| Assistant Professor | \$53,958 | \$55,800 | \$56,919 | \$58,587 | \$60,483 | \$61,943 | \$62,556 | \$64,102 | \$64,264 | \$64,573 | \$66,805 | \$65,416 | 9 | \$76,854 | \$75,280 |
| All | \$65,059 | \$64,737 | \$66,829 | \$68,219 | \$71,938 | \$75,236 | \$75,784 | \$78,896 | \$78,341 | \$80,239 | \$83,510 | \$80,696 | 37 | \$98,301 | \$94,946 |
| Index | | | | | | | | | | | | | | | |
| Professor | 0.75 | 0.78 | 0.85 | 0.84 | 0.89 | 0.89 | 0.88 | 0.86 | 0.83 | 0.82 | 0.85 | 0.81 | | | |
| Associate Professor | 0.86 | 0.89 | 0.90 | 0.90 | 0.93 | 0.93 | 0.89 | 0.90 | 0.86 | 0.84 | 0.84 | 0.88 | | | |
| Assistant Professor | 0.90 | 0.95 | 0.95 | 0.93 | 0.94 | 0.93 | 0.92 | 0.91 | 0.89 | 0.86 | 0.87 | 0.87 | | | |
| All | 0.82 | 0.86 | 0.90 | 0.89 | 0.92 | 0.92 | 0.89 | 0.89 | 0.85 | 0.84 | 0.85 | 0.85 | | | |
| GREENLEE SCHOOL OF JOURNALISM AND COMMUNICATION | | | | | | | | | | | | | | | |
| Average Salaries | | | | | | | | | | | | | | | |
| Professor | \$89,127 | \$89,877 | \$87,929 | \$93,364 | \$102,389 | \$110,333 | \$111,436 | \$116,069 | \$120,470 | \$121,676 | \$113,225 | \$114,662 | 5 | \$141,911 | \$139,712 |
| Associate Professor | \$68,218 | \$66,991 | \$64,730 | \$70,236 | \$81,378 | \$82,680 | \$80,127 | \$82,490 | \$83,053 | \$85,307 | \$88,480 | \$89,760 | 5 | \$99,931 | \$96,407 |
| Assistant Professor | \$55,173 | \$53,343 | \$53,389 | \$55,334 | \$60,422 | \$64,001 | \$62,307 | \$65,033 | \$65,533 | \$69,561 | \$75,076 | \$76,460 | 5 | \$84,089 | \$81,229 |
| All | \$65,754 | \$68,448 | \$67,695 | \$71,361 | \$78,167 | \$78,313 | \$77,174 | \$79,984 | \$83,528 | \$87,332 | \$92,260 | \$93,627 | 15 | \$108,644 | \$105,783 |
| Index | | | | | | | | | | | | | | | |
| Professor | 0.78 | 0.77 | 0.75 | 0.73 | 0.83 | 0.85 | 0.88 | 0.82 | 0.82 | 0.84 | 0.80 | 0.82 | | | |
| Associate Professor | 0.87 | 0.85 | 0.79 | 0.82 | 0.98 | 0.96 | 0.88 | 0.87 | 0.82 | 0.86 | 0.89 | 0.93 | | | |
| Assistant Professor | 0.84 | 0.81 | 0.79 | 0.79 | 0.84 | 0.87 | 0.84 | 0.85 | 0.82 | 0.86 | 0.89 | 0.94 | | | |
| All | 0.83 | 0.81 | 0.78 | 0.78 | 0.89 | 0.90 | 0.86 | 0.85 | 0.82 | 0.85 | 0.85 | 0.89 | | | |
| HISTORY | | | | | | | | | | | | | | | |
| Average Salaries | | | | | | | | | | | | | | | |
| Professor | \$88,409 | \$79,439 | \$80,630 | \$82,308 | \$88,108 | \$89,214 | \$91,196 | \$100,493 | \$97,292 | \$95,576 | \$100,628 | \$113,610 | 9 | \$134,371 | \$131,157 |
| Associate Professor | \$57,908 | \$57,855 | \$59,520 | \$62,311 | \$69,711 | \$74,854 | \$75,455 | \$77,735 | \$77,114 | \$78,195 | \$79,093 | \$78,048 | 6 | \$93,236 | \$91,603 |
| Assistant Professor | \$49,203 | \$49,605 | \$51,464 | \$52,742 | \$57,070 | \$60,630 | \$62,039 | \$65,715 | \$65,270 | \$65,923 | \$67,908 | \$67,174 | 6 | \$78,488 | \$76,355 |
| All | \$63,294 | \$64,204 | \$64,596 | \$65,429 | \$72,660 | \$74,057 | \$74,811 | \$82,398 | \$81,417 | \$80,597 | \$85,127 | \$90,182 | 21 | \$106,651 | \$104,198 |
| Index | | | | | | | | | | | | | | | |
| Professor | 0.82 | 0.75 | 0.75 | 0.73 | 0.77 | 0.76 | 0.76 | 0.82 | 0.76 | 0.76 | 0.75 | 0.87 | | | |
| Associate Professor | 0.78 | 0.78 | 0.79 | 0.79 | 0.87 | 0.93 | 0.88 | 0.90 | 0.86 | 0.88 | 0.85 | 0.85 | | | |
| Assistant Professor | 0.78 | 0.82 | 0.84 | 0.82 | 0.86 | 0.90 | 0.88 | 0.93 | 0.87 | 0.89 | 0.87 | 0.88 | | | |
| All | 0.80 | 0.77 | 0.78 | 0.77 | 0.82 | 0.86 | 0.83 | 0.87 | 0.82 | 0.83 | 0.80 | 0.87 | | | |

Iowa State University
Peer Land Grant Universities Faculty Salary Comparisons
2009-2010 through 2019-2020

| COLLEGE/DEPARTMENT | 2009-2010 | 2010-2011 | 2011-2012 | 2012-2013 | 2013-2014 | 2014-2015 | 2015-2016 | 2016-2017 | 2017-2018 | 2018-2019 | 2019-2020 | | | PEER | | |
|--|-----------|-----------|-----------|-----------|-----------|-----------|-----------|-----------|-----------|-----------|------------------------|-----------------------|----|-----------|----------------|---------------|
| | | | | | | | | | | | ISU | | | COUNT | AVERAGE SALARY | MEDIAN SALARY |
| | | | | | | | | | | | AVERAGE SALARY & INDEX | MEDIAN SALARY & INDEX | | | | |
| COLLEGE OF LIBERAL ARTS AND SCIENCES- HUMANITIES, continued | | | | | | | | | | | | | | | | |
| MUSIC AND THEATRE⁶ | | | | | | | | | | | | | | | | |
| Average Salaries | | | | | | | | | | | | | | | | |
| Professor | \$68,212 | \$68,503 | \$70,532 | \$70,940 | \$75,689 | \$86,184 | \$81,996 | \$83,325 | \$84,612 | \$90,077 | \$89,758 | \$93,668 | 7 | \$117,757 | \$114,293 | |
| Associate Professor | \$54,957 | \$56,038 | \$57,439 | \$57,900 | \$61,970 | \$65,763 | \$66,406 | \$68,660 | \$68,922 | \$70,516 | \$71,358 | \$70,828 | 9 | \$88,721 | \$83,651 | |
| Assistant Professor | \$49,207 | \$51,457 | \$51,426 | \$52,234 | \$56,138 | \$59,645 | \$58,690 | \$60,520 | \$60,520 | \$61,078 | \$63,417 | \$63,137 | 6 | \$71,593 | \$70,727 | |
| All | \$59,937 | \$60,508 | \$62,003 | \$60,915 | \$65,490 | \$71,075 | \$69,262 | \$71,223 | \$71,752 | \$73,858 | \$75,047 | \$75,998 | 22 | \$93,288 | \$89,876 | |
| Index | | | | | | | | | | | | | | | | |
| Professor | 0.75 | 0.76 | 0.77 | 0.75 | 0.79 | 0.83 | 0.78 | 0.77 | 0.75 | 0.90 | 0.76 | 0.82 | | | | |
| Associate Professor | 0.81 | 0.81 | 0.83 | 0.81 | 0.84 | 0.86 | 0.88 | 0.87 | 0.85 | 0.89 | 0.80 | 0.85 | | | | |
| Assistant Professor | 0.85 | 0.90 | 0.88 | 0.84 | 0.89 | 0.91 | 0.88 | 0.84 | 0.86 | 0.91 | 0.89 | 0.89 | | | | |
| All | 0.79 | 0.80 | 0.80 | 0.79 | 0.83 | 0.86 | 0.84 | 0.82 | 0.81 | 0.90 | 0.80 | 0.85 | | | | |
| PHILOSOPHY AND RELIGIOUS STUDIES | | | | | | | | | | | | | | | | |
| Average Salaries | | | | | | | | | | | | | | | | |
| Professor | \$85,580 | \$85,278 | \$84,672 | \$93,519 | \$98,379 | \$99,980 | \$100,980 | \$104,520 | \$104,520 | \$103,066 | \$110,309 | \$118,065 | 5 | \$130,211 | \$123,695 | |
| Associate Professor | \$60,627 | \$61,853 | \$62,734 | \$64,253 | \$71,157 | \$72,161 | \$73,114 | \$75,262 | \$74,322 | \$75,496 | \$76,508 | \$76,120 | 8 | \$92,760 | \$90,290 | |
| Assistant Professor | \$54,182 | \$53,546 | \$54,196 | \$56,565 | \$58,689 | \$60,503 | \$61,158 | \$65,703 | \$65,676 | \$67,595 | \$69,203 | \$69,867 | 4 | \$76,322 | \$75,068 | |
| All | \$69,385 | \$67,354 | \$66,966 | \$69,122 | \$72,295 | \$74,856 | \$75,185 | \$79,980 | \$82,038 | \$80,124 | \$84,731 | \$86,985 | 17 | \$99,907 | \$96,534 | |
| Index | | | | | | | | | | | | | | | | |
| Professor | 0.80 | 0.80 | 0.75 | 0.81 | 0.83 | 0.85 | 0.82 | 0.82 | 0.79 | 0.76 | 0.85 | 0.95 | | | | |
| Associate Professor | 0.84 | 0.88 | 0.86 | 0.84 | 0.92 | 0.88 | 0.84 | 0.85 | 0.81 | 0.80 | 0.82 | 0.84 | | | | |
| Assistant Professor | 0.93 | 0.92 | 0.89 | 0.92 | 0.91 | 0.88 | 0.88 | 0.91 | 0.90 | 0.90 | 0.91 | 0.93 | | | | |
| All | 0.83 | 0.85 | 0.82 | 0.85 | 0.88 | 0.87 | 0.84 | 0.86 | 0.82 | 0.81 | 0.85 | 0.90 | | | | |
| WORLD LANGUAGES & CULTURES¹¹ | | | | | | | | | | | | | | | | |
| Average Salaries | | | | | | | | | | | | | | | | |
| Professor | \$74,256 | \$76,267 | \$77,411 | \$79,388 | \$81,937 | \$114,978 | \$92,350 | \$96,163 | \$99,163 | \$105,300 | \$118,265 | \$118,265 | 2 | \$123,464 | \$116,800 | |
| Associate Professor | \$57,937 | \$59,201 | \$60,066 | \$61,706 | \$68,168 | \$71,021 | \$71,088 | \$73,113 | \$74,423 | \$74,820 | \$77,152 | \$76,030 | 18 | \$88,775 | \$84,841 | |
| Assistant Professor | \$51,169 | \$51,078 | \$51,844 | \$52,195 | \$53,013 | \$57,631 | \$58,388 | \$62,667 | \$62,317 | \$63,639 | \$64,912 | \$63,666 | 5 | \$75,231 | \$72,544 | |
| All | \$57,823 | \$59,801 | \$60,688 | \$62,425 | \$67,032 | \$77,070 | \$71,104 | \$73,959 | \$74,047 | \$76,045 | \$77,993 | \$76,936 | 25 | \$88,841 | \$84,938 | |
| Index | | | | | | | | | | | | | | | | |
| Professor | 0.73 | 0.78 | 0.77 | 0.76 | 0.77 | 1.06 | 0.84 | 0.85 | 0.79 | 0.86 | 0.96 | 1.01 | | | | |
| Associate Professor | 0.85 | 0.86 | 0.85 | 0.84 | 0.91 | 0.95 | 0.95 | 0.94 | 0.94 | 0.87 | 0.87 | 0.90 | | | | |
| Assistant Professor | 0.88 | 0.90 | 0.89 | 0.85 | 0.85 | 0.90 | 0.85 | 0.88 | 0.83 | 0.86 | 0.86 | 0.88 | | | | |
| All | 0.83 | 0.85 | 0.84 | 0.82 | 0.86 | 0.97 | 0.90 | 0.91 | 0.89 | 0.87 | 0.88 | 0.91 | | | | |

**Iowa State University
Peer Land Grant Universities Faculty Salary Comparisons
2009-2010 through 2019-2020**

| COLLEGE/DEPARTMENT | 2009-2010 | 2010-2011 | 2011-2012 | 2012-2013 | 2013-2014 | 2014-2015 | 2015-2016 | 2016-2017 | 2017-2018 | 2018-2019 | 2019-2020 | | | | |
|--|-----------|-----------|-----------|-----------|-----------|-----------|-----------|-----------|-----------|-----------|------------------------|-----------------------|-------|----------------|---------------|
| | | | | | | | | | | | ISU | | | PEER | |
| | | | | | | | | | | | AVERAGE SALARY & INDEX | MEDIAN SALARY & INDEX | COUNT | AVERAGE SALARY | MEDIAN SALARY |
| COLLEGE OF LIBERAL ARTS AND SCIENCES- HUMANITIES, continued | | | | | | | | | | | | | | | |
| HUMANITIES SUMMARY | | | | | | | | | | | | | | | |
| Average Salaries | | | | | | | | | | | | | | | |
| Professor | \$79,039 | \$78,582 | \$81,198 | \$84,396 | \$90,284 | \$97,514 | \$95,241 | \$99,201 | \$99,454 | \$100,994 | \$104,881 | \$107,701 | 39 | \$129,422 | \$126,080 |
| Associate Professor | \$60,318 | \$61,033 | \$61,893 | \$64,590 | \$69,721 | \$72,153 | \$72,395 | \$74,763 | \$74,519 | \$75,381 | \$76,927 | \$76,302 | 63 | \$91,059 | \$87,039 |
| Assistant Professor | \$52,559 | \$52,950 | \$53,744 | \$55,302 | \$58,503 | \$60,990 | \$61,257 | \$64,124 | \$63,882 | \$65,249 | \$67,598 | \$67,163 | 35 | \$76,973 | \$75,119 |
| All | \$63,605 | \$64,096 | \$65,030 | \$66,431 | \$71,104 | \$74,945 | \$74,057 | \$77,813 | \$78,022 | \$79,195 | \$82,502 | \$82,906 | 137 | \$98,381 | \$95,107 |
| Index | | | | | | | | | | | | | | | |
| Professor | 0.77 | 0.77 | 0.78 | 0.77 | 0.82 | 0.87 | 0.82 | 0.82 | 0.79 | 0.82 | 0.81 | 0.85 | | | |
| Associate Professor | 0.84 | 0.86 | 0.85 | 0.85 | 0.91 | 0.92 | 0.89 | 0.89 | 0.87 | 0.86 | 0.84 | 0.88 | | | |
| Assistant Professor | 0.86 | 0.89 | 0.89 | 0.87 | 0.90 | 0.90 | 0.88 | 0.89 | 0.86 | 0.88 | 0.88 | 0.89 | | | |
| All | 0.82 | 0.83 | 0.83 | 0.83 | 0.88 | 0.90 | 0.87 | 0.87 | 0.84 | 0.85 | 0.84 | 0.87 | | | |

Iowa State University
Peer Land Grant Universities Faculty Salary Comparisons
2009-2010 through 2019-2020

| COLLEGE/DEPARTMENT | 2009-2010 | 2010-2011 | 2011-2012 | 2012-2013 | 2013-2014 | 2014-2015 | 2015-2016 | 2016-2017 | 2017-2018 | 2018-2019 | 2019-2020 | | | PEER | |
|---|-----------|-----------|-----------|-----------|-----------|-----------|-----------|-----------|-----------|-----------|------------------------------|-----------------------------|-------|-------------------|------------------|
| | | | | | | | | | | | ISU | | | AVERAGE SALARY | MEDIAN SALARY |
| | | | | | | | | | | | AVERAGE SALARY & INDEX | MEDIAN SALARY & INDEX | COUNT | | |
| -COLLEGE OF LIBERAL ARTS AND SCIENCES- SCIENCE AND MATHEMATICS | | | | | | | | | | | | | | | |
| BIOCHEMISTRY, BIOPHYSICS, AND MOLECULAR BIOLOGY¹ | | | | | | | | | | | | | | | |
| Average Salaries | | | | | | | | | | | | | | | |
| Professor | \$110,626 | \$111,801 | \$112,056 | \$117,274 | \$120,536 | \$129,393 | \$130,684 | \$137,825 | \$149,802 | \$138,402 | \$141,718 | \$134,654 | 16 | \$146,990 | \$143,501 |
| Associate Professor | \$94,361 | \$94,361 | \$75,786 | \$77,114 | \$79,157 | \$82,082 | \$82,902 | \$85,257 | \$85,032 | \$87,771 | \$89,703 | \$89,359 | 5 | \$101,451 | \$102,041 |
| Assistant Professor | \$69,156 | \$69,156 | \$67,207 | | \$71,710 | \$73,433 | \$75,343 | \$77,177 | \$75,292 | \$77,379 | \$78,461 | \$78,461 | 4 | \$91,155 | \$90,488 |
| All | \$98,903 | \$99,687 | \$102,274 | \$109,242 | \$108,574 | \$112,869 | \$114,184 | \$113,720 | \$119,956 | \$116,930 | \$121,194 | \$116,604 | 25 | \$128,949 | \$126,727 |
| Index | | | | | | | | | | | | | | | |
| Professor | 0.87 | 0.92 | 0.89 | 0.86 | 0.87 | 0.91 | 0.85 | 0.89 | 1.01 | 0.86 | 0.96 | 0.94 | | | |
| Associate Professor | 1.16 | 1.22 | 0.91 | 0.88 | 0.87 | 0.92 | 0.87 | 0.83 | 0.87 | 0.90 | 0.88 | 0.88 | | | |
| Assistant Professor | 1.00 | 0.98 | 0.94 | 0.00 | 0.95 | 0.92 | 0.88 | 0.87 | 0.86 | 0.89 | 0.86 | 0.87 | | | |
| All | 0.90 | 0.95 | 0.90 | 0.86 | 0.87 | 0.91 | 0.85 | 0.88 | 0.97 | 0.87 | 0.94 | 0.92 | | | |
| CHEMISTRY | | | | | | | | | | | | | | | |
| Average Salaries | | | | | | | | | | | | | | | |
| Professor | \$118,873 | \$117,778 | \$120,642 | \$124,904 | \$124,556 | \$122,257 | \$123,251 | \$125,094 | \$124,008 | \$126,101 | \$127,910 | \$146,728 | 17 | \$169,426 | \$171,578 |
| Associate Professor | \$80,155 | \$77,310 | \$79,682 | \$84,439 | \$87,225 | \$87,605 | \$87,651 | \$90,447 | \$94,212 | \$95,468 | \$98,244 | \$93,703 | 3 | \$106,831 | \$103,470 |
| Assistant Professor | \$70,310 | \$72,238 | \$72,307 | \$73,775 | \$77,477 | \$78,655 | \$78,769 | \$83,219 | \$82,163 | \$82,484 | \$84,600 | \$84,168 | 8 | \$94,724 | \$92,672 |
| All | \$103,415 | \$104,472 | \$102,619 | \$104,503 | \$106,158 | \$103,764 | \$103,059 | \$108,851 | \$107,641 | \$109,601 | \$112,357 | \$123,173 | 28 | \$141,376 | \$141,736 |
| Index | | | | | | | | | | | | | | | |
| Professor | 0.91 | 0.93 | 0.92 | 0.90 | 0.88 | 0.84 | 0.82 | 0.81 | 0.78 | 0.78 | 0.75 | 0.86 | | | |
| Associate Professor | 0.96 | 0.92 | 0.94 | 0.96 | 0.99 | 0.97 | 0.94 | 0.94 | 0.94 | 0.93 | 0.92 | 0.91 | | | |
| Assistant Professor | 0.99 | 1.01 | 1.01 | 0.97 | 1.05 | 0.99 | 0.94 | 0.96 | 0.92 | 0.90 | 0.89 | 0.91 | | | |
| All | 0.93 | 0.94 | 0.94 | 0.92 | 0.92 | 0.89 | 0.86 | 0.85 | 0.83 | 0.82 | 0.79 | 0.87 | | | |
| COMPUTER SCIENCE | | | | | | | | | | | | | | | |
| Average Salaries | | | | | | | | | | | | | | | |
| Professor | \$131,027 | \$132,191 | \$134,174 | \$137,233 | \$137,382 | \$140,763 | \$140,837 | \$134,612 | \$135,148 | \$139,084 | \$142,219 | \$137,971 | 14 | \$179,541 | \$182,238 |
| Associate Professor | \$91,835 | \$91,647 | \$92,922 | \$94,545 | \$96,639 | \$99,073 | \$101,280 | \$102,283 | \$102,561 | \$103,587 | \$106,206 | \$104,292 | 8 | \$138,457 | \$133,979 |
| Assistant Professor | \$83,672 | \$83,331 | \$83,389 | \$84,599 | \$90,000 | \$92,417 | \$93,341 | \$96,561 | \$97,214 | \$98,415 | \$100,393 | \$100,000 | 7 | \$122,196 | \$112,890 |
| All | \$103,518 | \$105,465 | \$107,010 | \$111,222 | \$111,041 | \$114,738 | \$115,049 | \$119,031 | \$117,900 | \$118,945 | \$122,188 | \$119,515 | 29 | \$154,365 | \$152,186 |
| Index | | | | | | | | | | | | | | | |
| Professor | 0.93 | 0.95 | 0.92 | 0.88 | 0.88 | 0.90 | 0.89 | 0.80 | 0.79 | 0.80 | 0.79 | 0.76 | | | |
| Associate Professor | 0.88 | 0.89 | 0.88 | 0.86 | 0.87 | 0.87 | 0.86 | 0.84 | 0.83 | 0.82 | 0.77 | 0.78 | | | |
| Assistant Professor | 0.93 | 0.92 | 0.90 | 0.88 | 0.92 | 0.95 | 0.94 | 0.93 | 0.90 | 0.89 | 0.82 | 0.89 | | | |
| All | 0.91 | 0.92 | 0.90 | 0.87 | 0.87 | 0.89 | 0.88 | 0.83 | 0.82 | 0.82 | 0.79 | 0.79 | | | |

Iowa State University
Peer Land Grant Universities Faculty Salary Comparisons
2009-2010 through 2019-2020

| COLLEGE/DEPARTMENT | 2009-2010 | 2010-2011 | 2011-2012 | 2012-2013 | 2013-2014 | 2014-2015 | 2015-2016 | 2016-2017 | 2017-2018 | 2018-2019 | 2019-2020 | | | PEER | | |
|--|-----------|-----------|-----------|-----------|-----------|-----------|-----------|-----------|-----------|-----------|------------------------|-----------------------|----|-----------|----------------|---------------|
| | | | | | | | | | | | ISU | | | COUNT | AVERAGE SALARY | MEDIAN SALARY |
| | | | | | | | | | | | AVERAGE SALARY & INDEX | MEDIAN SALARY & INDEX | | | | |
| COLLEGE OF LIBERAL ARTS AND SCIENCES - SCIENCE AND MATHEMATICS, continued | | | | | | | | | | | | | | | | |
| ECOLOGY, EVOLUTION, AND ORGANISMAL BIOLOGY¹ | | | | | | | | | | | | | | | | |
| Average Salaries | | | | | | | | | | | | | | | | |
| Professor | \$96,737 | \$96,971 | \$98,426 | \$100,849 | \$102,266 | \$102,214 | \$102,380 | \$106,141 | \$110,556 | \$112,833 | \$116,913 | \$116,737 | 11 | \$146,990 | \$131,061 | |
| Associate Professor | \$79,035 | \$78,095 | \$79,266 | \$81,974 | \$83,340 | \$85,532 | \$85,742 | \$88,369 | \$87,325 | \$91,097 | \$92,588 | \$94,515 | 7 | \$99,073 | \$98,121 | |
| Assistant Professor | \$66,000 | \$65,862 | \$66,850 | \$69,075 | \$73,739 | \$76,708 | \$76,782 | \$79,671 | \$80,471 | \$80,604 | \$83,953 | \$81,652 | 5 | \$90,812 | \$87,201 | |
| All | \$81,440 | \$82,057 | \$83,288 | \$86,944 | \$90,789 | \$93,833 | \$92,378 | \$96,266 | \$98,389 | \$99,342 | \$102,344 | \$102,346 | 23 | \$120,194 | \$111,501 | |
| Index | | | | | | | | | | | | | | | | |
| Professor | 0.85 | 0.87 | 0.84 | 0.81 | 0.81 | 0.81 | 0.80 | 0.74 | 0.82 | 0.81 | 0.80 | 0.89 | | | | |
| Associate Professor | 1.01 | 1.01 | 1.01 | 0.99 | 0.98 | 0.98 | 0.96 | 0.83 | 0.91 | 1.00 | 0.93 | 0.96 | | | | |
| Assistant Professor | 1.00 | 0.96 | 0.93 | 0.94 | 1.01 | 1.01 | 0.96 | 0.90 | 0.93 | 0.81 | 0.92 | 0.94 | | | | |
| All | 0.93 | 0.94 | 0.92 | 0.89 | 0.88 | 0.88 | 0.86 | 0.78 | 0.86 | 0.85 | 0.85 | 0.92 | | | | |
| GENETICS, DEVELOPMENT, AND CELL BIOLOGY¹ | | | | | | | | | | | | | | | | |
| Average Salaries | | | | | | | | | | | | | | | | |
| Professor | \$112,855 | \$117,180 | \$115,953 | \$113,715 | \$117,027 | \$128,741 | \$127,861 | \$132,267 | \$126,962 | \$133,903 | \$135,835 | \$131,087 | 13 | \$147,342 | \$136,806 | |
| Associate Professor | \$66,884 | \$64,915 | \$80,462 | \$79,757 | \$83,125 | \$93,027 | \$94,312 | \$97,926 | \$88,925 | \$94,147 | \$87,333 | \$85,283 | 3 | \$107,920 | \$103,416 | |
| Assistant Professor | \$72,362 | \$71,022 | \$72,087 | \$73,946 | \$73,755 | \$75,201 | \$78,045 | \$80,544 | \$81,304 | \$84,458 | \$87,452 | \$87,115 | 7 | \$95,380 | \$91,221 | |
| All | \$95,890 | \$97,096 | \$97,157 | \$96,254 | \$97,399 | \$106,262 | \$106,248 | \$108,038 | \$106,671 | \$116,240 | \$114,783 | \$111,730 | 23 | \$126,385 | \$118,577 | |
| Index | | | | | | | | | | | | | | | | |
| Professor | 1.01 | 1.03 | 1.00 | 0.94 | 0.92 | 0.93 | 1.01 | 0.93 | 0.86 | 0.89 | 0.92 | 0.96 | | | | |
| Associate Professor | 0.84 | 0.81 | 1.02 | 0.97 | 0.99 | 1.07 | 1.00 | 1.06 | 0.89 | 0.89 | 0.81 | 0.82 | | | | |
| Assistant Professor | 1.07 | 1.03 | 1.02 | 0.98 | 0.94 | 0.90 | 0.90 | 0.97 | 0.89 | 0.91 | 0.92 | 0.95 | | | | |
| All | 0.99 | 1.00 | 1.00 | 0.95 | 0.94 | 0.96 | 0.98 | 0.96 | 0.87 | 0.89 | 0.91 | 0.94 | | | | |
| GEOLOGICAL AND ATMOSPHERIC SCIENCES | | | | | | | | | | | | | | | | |
| Average Salaries | | | | | | | | | | | | | | | | |
| Professor | \$88,818 | \$89,728 | \$90,209 | \$92,386 | \$94,751 | \$104,013 | \$104,631 | \$107,003 | \$107,669 | \$108,688 | \$110,924 | \$107,791 | 9 | \$148,991 | \$132,976 | |
| Associate Professor | \$72,533 | \$69,794 | \$69,276 | \$73,284 | \$74,397 | \$79,924 | \$81,754 | \$84,454 | \$84,454 | \$86,039 | \$87,293 | \$90,091 | 3 | \$100,523 | \$97,288 | |
| Assistant Professor | \$63,569 | \$63,569 | \$64,523 | \$67,340 | \$68,835 | \$74,531 | \$73,542 | \$76,038 | \$76,038 | \$76,665 | \$77,139 | \$76,414 | 4 | \$88,552 | \$85,787 | |
| All | \$80,558 | \$82,637 | \$84,647 | \$84,830 | \$86,854 | \$94,905 | \$91,450 | \$93,099 | \$94,269 | \$93,389 | \$98,047 | \$96,628 | 16 | \$124,793 | \$114,487 | |
| Index | | | | | | | | | | | | | | | | |
| Professor | 0.82 | 0.85 | 0.82 | 0.78 | 0.79 | 0.83 | 0.82 | 0.80 | 0.77 | 0.75 | 0.74 | 0.81 | | | | |
| Associate Professor | 0.90 | 0.88 | 0.87 | 0.85 | 0.86 | 0.89 | 0.94 | 0.94 | 0.91 | 0.88 | 0.87 | 0.93 | | | | |
| Assistant Professor | 0.95 | 0.95 | 0.95 | 0.93 | 0.93 | 0.96 | 0.95 | 0.93 | 0.91 | 0.88 | 0.87 | 0.89 | | | | |
| All | 0.85 | 0.86 | 0.83 | 0.81 | 0.82 | 0.85 | 0.86 | 0.85 | 0.82 | 0.80 | 0.79 | 0.84 | | | | |

Iowa State University
Peer Land Grant Universities Faculty Salary Comparisons
2009-2010 through 2019-2020

| COLLEGE/DEPARTMENT | 2009-2010 | 2010-2011 | 2011-2012 | 2012-2013 | 2013-2014 | 2014-2015 | 2015-2016 | 2016-2017 | 2017-2018 | 2018-2019 | 2019-2020 | | | PEER | |
|--|-----------|-----------|-----------|-----------|-----------|-----------|-----------|-----------|-----------|-----------|------------------------------|-----------------------------|-------|-------------------|------------------|
| | | | | | | | | | | | ISU | | | AVERAGE SALARY | MEDIAN SALARY |
| | | | | | | | | | | | AVERAGE SALARY & INDEX | MEDIAN SALARY & INDEX | COUNT | | |
| COLLEGE OF LIBERAL ARTS AND SCIENCES - SCIENCE AND MATHEMATICS, continued | | | | | | | | | | | | | | | |
| MATHEMATICS | | | | | | | | | | | | | | | |
| Average Salaries | | | | | | | | | | | | | | | |
| Professor | \$91,283 | \$94,037 | \$91,693 | \$95,361 | \$98,148 | \$106,129 | \$107,882 | \$112,162 | \$112,903 | \$114,671 | \$116,838 | \$115,777 | 13 | \$146,471 | \$135,120 |
| Associate Professor | \$67,063 | \$70,709 | \$70,605 | \$71,802 | \$73,359 | \$76,418 | \$77,764 | \$81,254 | \$84,653 | \$88,273 | \$93,358 | \$91,800 | 12 | \$105,042 | \$105,183 |
| Assistant Professor | \$63,876 | \$63,978 | \$64,958 | \$67,871 | \$70,019 | \$71,848 | \$73,673 | \$75,201 | \$77,030 | \$87,602 | \$86,860 | \$85,425 | 10 | \$97,197 | \$96,182 |
| All | \$81,421 | \$82,921 | \$80,793 | \$82,413 | \$85,457 | \$89,325 | \$89,848 | \$92,716 | \$95,184 | \$98,602 | \$100,223 | \$98,884 | 35 | \$118,188 | \$113,731 |
| Index | | | | | | | | | | | | | | | |
| Professor | 0.78 | 0.82 | 0.77 | 0.77 | 0.77 | 0.82 | 0.82 | 0.82 | 0.80 | 0.80 | 0.80 | 0.86 | | | |
| Associate Professor | 0.83 | 0.88 | 0.86 | 0.84 | 0.84 | 0.84 | 0.83 | 0.85 | 0.85 | 0.87 | 0.89 | 0.87 | | | |
| Assistant Professor | 0.88 | 0.86 | 0.85 | 0.84 | 0.87 | 0.84 | 0.84 | 0.84 | 0.84 | 0.93 | 0.89 | 0.89 | | | |
| All | 0.80 | 0.84 | 0.81 | 0.80 | 0.80 | 0.83 | 0.83 | 0.83 | 0.82 | 0.85 | 0.85 | 0.87 | | | |
| PHYSICS AND ASTRONOMY | | | | | | | | | | | | | | | |
| Average Salaries | | | | | | | | | | | | | | | |
| Professor | \$118,004 | \$118,428 | \$120,439 | \$120,990 | \$120,544 | \$119,595 | \$122,498 | \$125,599 | \$123,689 | \$125,955 | \$127,359 | \$123,782 | 25 | \$146,696 | \$144,153 |
| Associate Professor | \$76,548 | \$77,351 | \$78,999 | \$77,842 | \$77,068 | \$78,389 | \$79,402 | \$88,591 | \$89,686 | \$85,481 | \$89,103 | \$90,393 | 4 | \$104,898 | \$105,867 |
| Assistant Professor | \$67,708 | \$68,000 | \$69,020 | \$71,665 | \$72,460 | \$73,208 | \$79,407 | \$84,458 | \$84,350 | \$85,194 | \$88,136 | \$87,568 | 7 | \$94,729 | \$93,667 |
| All | \$101,544 | \$102,032 | \$104,028 | \$106,763 | \$108,618 | \$107,018 | \$108,133 | \$112,286 | \$112,558 | \$116,663 | \$115,481 | \$113,031 | 36 | \$131,947 | \$130,082 |
| Index | | | | | | | | | | | | | | | |
| Professor | 0.99 | 1.00 | 1.01 | 0.96 | 0.94 | 0.92 | 0.94 | 0.90 | 0.86 | 0.86 | 0.87 | 0.86 | | | |
| Associate Professor | 0.93 | 0.94 | 0.94 | 0.88 | 0.84 | 0.84 | 0.83 | 0.88 | 0.88 | 0.83 | 0.85 | 0.85 | | | |
| Assistant Professor | 0.92 | 0.91 | 0.94 | 0.89 | 0.92 | 0.89 | 0.95 | 0.96 | 0.93 | 0.91 | 0.93 | 0.93 | | | |
| All | 0.97 | 0.98 | 0.99 | 0.94 | 0.92 | 0.90 | 0.92 | 0.90 | 0.87 | 0.86 | 0.88 | 0.87 | | | |
| STATISTICS | | | | | | | | | | | | | | | |
| Average Salaries | | | | | | | | | | | | | | | |
| Professor | \$124,303 | \$131,507 | \$132,041 | \$134,782 | \$135,715 | \$142,645 | \$142,780 | \$148,800 | \$148,942 | \$148,376 | \$152,424 | \$140,443 | 15 | \$156,688 | \$160,646 |
| Associate Professor | \$87,223 | \$87,740 | \$87,364 | \$89,349 | \$91,681 | \$94,872 | \$93,938 | \$97,575 | \$99,210 | \$101,959 | \$104,831 | \$101,319 | 9 | \$117,197 | \$117,129 |
| Assistant Professor | \$81,142 | \$82,314 | \$82,143 | \$84,539 | \$86,235 | \$88,720 | \$90,372 | \$92,990 | \$92,025 | \$92,532 | \$94,004 | \$94,860 | 7 | \$102,628 | \$103,333 |
| All | \$103,792 | \$107,080 | \$108,832 | \$110,619 | \$114,393 | \$116,304 | \$115,382 | \$120,026 | \$121,221 | \$121,421 | \$125,415 | \$118,791 | 31 | \$133,016 | \$135,071 |
| Index | | | | | | | | | | | | | | | |
| Professor | 0.94 | 1.03 | 1.02 | 0.96 | 0.97 | 1.01 | 0.99 | 1.01 | 1.00 | 0.98 | 0.97 | 0.87 | | | |
| Associate Professor | 0.99 | 1.00 | 0.99 | 0.97 | 0.95 | 0.95 | 0.92 | 0.94 | 0.91 | 0.91 | 0.89 | 0.87 | | | |
| Assistant Professor | 1.04 | 1.05 | 1.08 | 1.00 | 1.02 | 1.02 | 1.00 | 1.00 | 0.96 | 0.93 | 0.92 | 0.92 | | | |
| All | 0.97 | 1.02 | 1.02 | 0.97 | 0.97 | 0.99 | 0.97 | 0.99 | 0.97 | 0.95 | 0.94 | 0.88 | | | |

Iowa State University
Peer Land Grant Universities Faculty Salary Comparisons
2009-2010 through 2019-2020

| COLLEGE/DEPARTMENT | 2009-2010 | 2010-2011 | 2011-2012 | 2012-2013 | 2013-2014 | 2014-2015 | 2015-2016 | 2016-2017 | 2017-2018 | 2018-2019 | 2019-2020 | | | PEER | | |
|--|-----------|-----------|-----------|-----------|-----------|-----------|-----------|-----------|-----------|-----------|------------------------|-----------------------|-----|-----------|----------------|---------------|
| | | | | | | | | | | | ISU | | | COUNT | AVERAGE SALARY | MEDIAN SALARY |
| | | | | | | | | | | | AVERAGE SALARY & INDEX | MEDIAN SALARY & INDEX | | | | |
| COLLEGE OF LIBERAL ARTS AND SCIENCES - SCIENCE AND MATHEMATICS, continued | | | | | | | | | | | | | | | | |
| SCIENCE AND MATHEMATICS SUMMARY | | | | | | | | | | | | | | | | |
| Average Salaries | | | | | | | | | | | | | | | | |
| Professor | \$111,080 | \$112,959 | \$113,549 | \$116,076 | \$117,180 | \$121,879 | \$122,841 | \$126,524 | \$126,238 | \$128,617 | \$131,372 | \$129,662 | 133 | \$154,442 | \$150,009 | |
| Associate Professor | \$79,532 | \$79,952 | \$81,925 | \$83,606 | \$85,483 | \$88,443 | \$89,266 | \$91,713 | \$92,870 | \$94,329 | \$96,020 | \$94,908 | 54 | \$110,909 | \$109,652 | |
| Assistant Professor | \$71,900 | \$71,973 | \$71,364 | \$72,632 | \$75,050 | \$77,751 | \$79,146 | \$81,786 | \$82,567 | \$85,789 | \$87,753 | \$87,155 | 59 | \$98,427 | \$95,798 | |
| All | \$95,463 | \$96,729 | \$97,272 | \$99,410 | \$101,672 | \$104,801 | \$104,418 | \$107,875 | \$108,578 | \$110,891 | \$113,150 | \$111,838 | 246 | \$131,451 | \$128,148 | |
| Index | | | | | | | | | | | | | | | | |
| Professor | 0.91 | 0.94 | 0.92 | 0.89 | 0.88 | 0.89 | 0.88 | 0.86 | 0.85 | 0.84 | 0.85 | 0.86 | | | | |
| Associate Professor | 0.92 | 0.93 | 0.93 | 0.90 | 0.90 | 0.92 | 0.90 | 0.90 | 0.88 | 0.89 | 0.87 | 0.87 | | | | |
| Assistant Professor | 0.97 | 0.97 | 0.96 | 0.93 | 0.96 | 0.93 | 0.92 | 0.93 | 0.90 | 0.90 | 0.89 | 0.91 | | | | |
| All | 0.92 | 0.94 | 0.93 | 0.90 | 0.89 | 0.90 | 0.89 | 0.88 | 0.86 | 0.86 | 0.86 | 0.87 | | | | |

Iowa State University
Peer Land Grant Universities Faculty Salary Comparisons
2009-2010 through 2019-2020

| COLLEGE/DEPARTMENT | 2009-2010 | 2010-2011 | 2011-2012 | 2012-2013 | 2013-2014 | 2014-2015 | 2015-2016 | 2016-2017 | 2017-2018 | 2018-2019 | 2019-2020 | | | PEER | | |
|---|-----------|-----------|-----------|-----------|-----------|-----------|-----------|-----------|-----------|-----------|------------------------|-----------------------|----|-----------|----------------|---------------|
| | | | | | | | | | | | ISU | | | COUNT | AVERAGE SALARY | MEDIAN SALARY |
| | | | | | | | | | | | AVERAGE SALARY & INDEX | MEDIAN SALARY & INDEX | | | | |
| -COLLEGE OF LIBERAL ARTS AND SCIENCES- SOCIAL SCIENCES | | | | | | | | | | | | | | | | |
| ANTHROPOLOGY¹² | | | | | | | | | | | | | | | | |
| Average Salaries | | | | | | | | | | | | | | | | |
| Professor | | | \$91,402 | \$100,542 | \$105,555 | \$125,000 | \$126,250 | \$129,050 | | | | | | | | |
| Associate Professor | \$69,540 | \$72,340 | \$60,349 | \$63,933 | \$66,532 | \$68,805 | \$71,380 | \$74,565 | | | | | | | | |
| Assistant Professor | \$50,973 | \$51,973 | \$53,402 | \$55,169 | \$57,022 | \$61,292 | \$64,691 | \$66,288 | | | | | | | | |
| All | \$58,930 | \$58,762 | \$59,823 | \$62,158 | \$66,672 | \$74,414 | \$77,307 | \$79,984 | | | | | | | | |
| Index | | | | | | | | | | | | | | | | |
| Professor | | | 0.86 | 0.92 | 0.95 | 1.08 | 1.04 | 1.04 | | | | | | | | |
| Associate Professor | 0.97 | 1.01 | 0.82 | 0.83 | 0.84 | 0.85 | 0.87 | 0.86 | | | | | | | | |
| Assistant Professor | 0.82 | 0.85 | 0.86 | 0.85 | 0.85 | 0.90 | 0.92 | 0.89 | | | | | | | | |
| All | 0.89 | 0.91 | 0.86 | 0.86 | 0.87 | 0.93 | 0.92 | 0.90 | | | | | | | | |
| ECONOMICS | | | | | | | | | | | | | | | | |
| Average Salaries | | | | | | | | | | | | | | | | |
| Professor | \$143,367 | \$142,446 | \$147,779 | \$171,016 | \$163,627 | \$169,262 | \$169,235 | \$176,028 | \$174,327 | \$176,070 | \$179,591 | \$170,099 | 7 | \$247,388 | \$254,183 | |
| Associate Professor | \$114,018 | \$116,160 | \$114,715 | \$119,032 | \$116,088 | \$118,027 | \$119,207 | \$123,643 | \$116,282 | \$135,336 | \$138,042 | \$124,440 | 3 | \$181,279 | \$183,305 | |
| Assistant Professor | \$97,500 | \$99,875 | \$101,373 | \$105,225 | \$107,704 | \$108,457 | \$109,694 | \$112,710 | \$113,034 | \$116,707 | \$119,425 | \$120,000 | 5 | \$139,017 | \$139,941 | |
| All | \$118,250 | \$124,503 | \$126,979 | \$141,450 | \$138,660 | \$140,661 | \$139,310 | \$142,410 | \$144,608 | \$152,971 | \$151,226 | \$144,268 | 15 | \$198,043 | \$201,927 | |
| Index | | | | | | | | | | | | | | | | |
| Professor | 0.87 | 0.85 | 0.84 | 0.90 | 0.84 | 0.84 | 0.79 | 0.79 | 0.76 | 0.76 | 0.73 | 0.67 | | | | |
| Associate Professor | 0.92 | 0.96 | 0.93 | 0.89 | 0.83 | 0.81 | 0.81 | 0.72 | 0.68 | 0.79 | 0.76 | 0.68 | | | | |
| Assistant Professor | 0.96 | 0.96 | 0.96 | 0.92 | 0.92 | 0.90 | 0.88 | 0.89 | 0.86 | 0.88 | 0.86 | 0.86 | | | | |
| All | 0.91 | 0.90 | 0.88 | 0.90 | 0.85 | 0.84 | 0.81 | 0.78 | 0.75 | 0.79 | 0.76 | 0.71 | | | | |
| POLITICAL SCIENCE | | | | | | | | | | | | | | | | |
| Average Salaries | | | | | | | | | | | | | | | | |
| Professor | \$115,620 | \$106,319 | \$108,249 | \$107,239 | \$110,097 | \$118,874 | \$120,063 | \$123,716 | \$123,555 | \$124,953 | \$120,888 | \$117,717 | 7 | \$166,029 | \$170,985 | |
| Associate Professor | \$63,744 | \$63,889 | \$83,244 | \$65,497 | \$67,227 | \$77,907 | \$78,686 | \$81,082 | \$83,248 | \$81,526 | \$88,364 | \$88,364 | 2 | \$116,155 | \$113,981 | |
| Assistant Professor | \$56,375 | \$61,575 | \$58,998 | \$59,775 | \$61,393 | \$68,391 | \$69,711 | \$72,249 | \$72,156 | \$75,835 | \$79,175 | \$74,718 | 4 | \$92,690 | \$91,401 | |
| All | \$77,096 | \$80,167 | \$90,605 | \$90,155 | \$89,099 | \$96,792 | \$91,932 | \$94,937 | \$91,305 | \$96,620 | \$103,049 | \$99,970 | 13 | \$135,790 | \$137,728 | |
| Index | | | | | | | | | | | | | | | | |
| Professor | 0.88 | 0.82 | 0.81 | 0.76 | 0.77 | 0.82 | 0.80 | 0.80 | 0.79 | 0.78 | 0.73 | 0.69 | | | | |
| Associate Professor | 0.74 | 0.74 | 0.93 | 0.70 | 0.71 | 0.79 | 0.78 | 0.78 | 0.76 | 0.72 | 0.76 | 0.78 | | | | |
| Assistant Professor | 0.78 | 0.85 | 0.80 | 0.76 | 0.78 | 0.86 | 0.84 | 0.85 | 0.82 | 0.84 | 0.85 | 0.82 | | | | |
| All | 0.81 | 0.80 | 0.82 | 0.76 | 0.77 | 0.83 | 0.82 | 0.82 | 0.80 | 0.79 | 0.76 | 0.73 | | | | |

Iowa State University
Peer Land Grant Universities Faculty Salary Comparisons
2009-2010 through 2019-2020

| COLLEGE/DEPARTMENT | 2009-2010 | 2010-2011 | 2011-2012 | 2012-2013 | 2013-2014 | 2014-2015 | 2015-2016 | 2016-2017 | 2017-2018 | 2018-2019 | 2019-2020 | | | PEER | | | | |
|---|-----------|-----------|-----------|-----------|-----------|-----------|-----------|-----------|-----------|-----------|------------------------------|-----------------------------|----|-------------------|------------------|-------|-------------------|------------------|
| | | | | | | | | | | | ISU | | | AVERAGE SALARY | MEDIAN SALARY | COUNT | AVERAGE SALARY | MEDIAN SALARY |
| | | | | | | | | | | | AVERAGE SALARY & INDEX | MEDIAN SALARY & INDEX | | | | | | |
| COLLEGE OF LIBERAL ARTS AND SCIENCES- SOCIAL SCIENCES, continued | | | | | | | | | | | | | | | | | | |
| PSYCHOLOGY | | | | | | | | | | | | | | | | | | |
| Average Salaries | | | | | | | | | | | | | | | | | | |
| Professor | \$118,744 | \$119,458 | \$116,806 | \$117,632 | \$118,000 | \$116,278 | \$118,543 | \$120,915 | \$123,810 | \$124,013 | \$122,436 | \$112,218 | 11 | \$159,303 | \$155,695 | | | |
| Associate Professor | \$72,193 | \$72,748 | \$72,352 | \$74,043 | \$75,442 | \$74,310 | \$75,182 | \$75,268 | \$77,019 | \$77,536 | \$81,030 | \$81,600 | 11 | \$103,308 | \$101,245 | | | |
| Assistant Professor | \$59,944 | \$60,187 | \$61,117 | \$63,168 | \$64,971 | \$69,368 | \$71,236 | \$72,663 | \$72,663 | \$74,179 | \$75,747 | \$75,480 | 4 | \$89,088 | \$85,202 | | | |
| All | \$79,271 | \$81,459 | \$84,715 | \$86,965 | \$90,066 | \$93,785 | \$94,588 | \$97,791 | \$98,956 | \$99,174 | \$97,735 | \$93,612 | 26 | \$124,811 | \$121,813 | | | |
| Index | | | | | | | | | | | | | | | | | | |
| Professor | 0.95 | 0.95 | 0.92 | 0.87 | 0.88 | 0.86 | 0.83 | 0.81 | 0.81 | 0.82 | 0.77 | 0.72 | | | | | | |
| Associate Professor | 0.91 | 0.90 | 0.88 | 0.88 | 0.88 | 0.85 | 0.79 | 0.79 | 0.79 | 0.78 | 0.78 | 0.81 | | | | | | |
| Assistant Professor | 0.86 | 0.86 | 0.86 | 0.86 | 0.87 | 0.89 | 0.88 | 0.89 | 0.85 | 0.87 | 0.85 | 0.89 | | | | | | |
| All | 0.91 | 0.91 | 0.89 | 0.87 | 0.88 | 0.86 | 0.82 | 0.81 | 0.81 | 0.82 | 0.78 | 0.77 | | | | | | |
| SOCIOLOGY¹ | | | | | | | | | | | | | | | | | | |
| Average Salaries | | | | | | | | | | | | | | | | | | |
| Professor | \$86,717 | \$75,909 | \$81,667 | \$86,231 | \$88,906 | \$96,660 | \$101,764 | \$101,273 | \$98,002 | \$99,882 | \$102,512 | \$93,235 | 13 | \$146,425 | \$144,339 | | | |
| Associate Professor | \$68,993 | \$68,203 | \$68,708 | \$67,141 | \$68,932 | \$75,105 | \$77,569 | \$80,617 | \$69,558 | \$78,252 | \$78,423 | \$78,423 | 4 | \$102,795 | \$99,592 | | | |
| Assistant Professor | \$55,551 | \$57,051 | \$56,672 | \$56,276 | \$59,160 | \$63,429 | \$66,042 | \$71,474 | \$72,392 | \$71,670 | \$76,410 | \$76,000 | 3 | \$85,396 | \$84,132 | | | |
| All | \$69,945 | \$66,939 | \$69,757 | \$73,328 | \$76,794 | \$84,821 | \$89,194 | \$90,131 | \$89,686 | \$91,653 | \$93,779 | \$87,687 | 20 | \$128,545 | \$126,359 | | | |
| Index | | | | | | | | | | | | | | | | | | |
| Professor | 0.71 | 0.63 | 0.67 | 0.66 | 0.69 | 0.76 | 0.74 | 0.72 | 0.70 | 0.69 | 0.70 | 0.65 | | | | | | |
| Associate Professor | 0.88 | 0.85 | 0.84 | 0.79 | 0.79 | 0.85 | 0.83 | 0.84 | 0.70 | 0.77 | 0.76 | 0.79 | | | | | | |
| Assistant Professor | 0.83 | 0.86 | 0.83 | 0.80 | 0.81 | 0.86 | 0.85 | 0.92 | 0.90 | 0.87 | 0.89 | 0.90 | | | | | | |
| All | 0.82 | 0.80 | 0.78 | 0.73 | 0.73 | 0.79 | 0.77 | 0.77 | 0.72 | 0.72 | 0.73 | 0.69 | | | | | | |
| SOCIAL SCIENCES SUMMARY | | | | | | | | | | | | | | | | | | |
| Average Salaries | | | | | | | | | | | | | | | | | | |
| Professor | \$115,002 | \$117,194 | \$116,208 | \$121,640 | \$121,096 | \$120,999 | \$123,025 | \$124,687 | \$127,449 | \$125,495 | \$125,863 | \$117,399 | 38 | \$172,363 | \$172,769 | | | |
| Associate Professor | \$79,865 | \$79,749 | \$80,964 | \$81,757 | \$80,926 | \$83,669 | \$84,795 | \$87,079 | \$85,746 | \$87,481 | \$89,794 | \$88,067 | 20 | \$116,185 | \$114,497 | | | |
| Assistant Professor | \$60,400 | \$62,003 | \$62,399 | \$63,946 | \$67,155 | \$71,912 | \$75,237 | \$78,270 | \$79,945 | \$82,460 | \$90,378 | \$89,300 | 16 | \$104,899 | \$103,657 | | | |
| All | \$81,601 | \$84,833 | \$88,111 | \$92,573 | \$94,602 | \$99,004 | \$99,750 | \$101,933 | \$105,191 | \$106,169 | \$108,442 | \$103,396 | 74 | \$142,593 | \$142,077 | | | |
| Index | | | | | | | | | | | | | | | | | | |
| Professor | 0.87 | 0.85 | 0.84 | 0.83 | 0.82 | 0.83 | 0.79 | 0.78 | 0.77 | 0.76 | 0.73 | 0.68 | | | | | | |
| Associate Professor | 0.89 | 0.89 | 0.88 | 0.85 | 0.83 | 0.84 | 0.81 | 0.79 | 0.74 | 0.77 | 0.77 | 0.77 | | | | | | |
| Assistant Professor | 0.85 | 0.87 | 0.87 | 0.85 | 0.85 | 0.88 | 0.87 | 0.88 | 0.84 | 0.86 | 0.86 | 0.86 | | | | | | |
| All | 0.87 | 0.87 | 0.86 | 0.84 | 0.83 | 0.84 | 0.81 | 0.80 | 0.77 | 0.78 | 0.76 | 0.73 | | | | | | |

Iowa State University
Peer Land Grant Universities Faculty Salary Comparisons
2009-2010 through 2019-2020

| COLLEGE/DEPARTMENT | 2009-2010 | 2010-2011 | 2011-2012 | 2012-2013 | 2013-2014 | 2014-2015 | 2015-2016 | 2016-2017 | 2017-2018 | 2018-2019 | 2019-2020 | | | PEER | | |
|--|-----------|-----------|-----------|-----------|-----------|-----------|-----------|-----------|-----------|-----------|------------------------|-----------------------|-----|-----------|----------------|---------------|
| | | | | | | | | | | | ISU | | | COUNT | AVERAGE SALARY | MEDIAN SALARY |
| | | | | | | | | | | | AVERAGE SALARY & INDEX | MEDIAN SALARY & INDEX | | | | |
| LIBERAL ARTS AND SCIENCES SUMMARY | | | | | | | | | | | | | | | | |
| Average Salaries | | | | | | | | | | | | | | | | |
| Professor | \$103,687 | \$105,720 | \$107,218 | \$111,137 | \$113,119 | \$117,556 | \$118,230 | \$121,261 | \$120,978 | \$123,482 | \$125,455 | \$123,365 | 210 | \$153,038 | \$149,683 | |
| Associate Professor | \$72,702 | \$73,073 | \$74,076 | \$76,165 | \$78,652 | \$81,840 | \$82,226 | \$84,623 | \$83,253 | \$84,144 | \$86,331 | \$85,353 | 137 | \$102,551 | \$99,961 | |
| Assistant Professor | \$61,607 | \$62,460 | \$62,523 | \$63,374 | \$66,053 | \$69,333 | \$71,352 | \$74,365 | \$74,711 | \$78,893 | \$81,722 | \$81,106 | 110 | \$92,542 | \$90,361 | |
| All | \$82,804 | \$84,579 | \$85,727 | \$88,046 | \$91,057 | \$95,041 | \$94,718 | \$98,085 | \$97,825 | \$100,588 | \$103,200 | \$101,798 | 457 | \$123,342 | \$120,499 | |
| Index | | | | | | | | | | | | | | | | |
| Professor | 0.87 | 0.89 | 0.88 | 0.86 | 0.86 | 0.88 | 0.86 | 0.84 | 0.82 | 0.82 | 0.82 | 0.82 | | | | |
| Associate Professor | 0.89 | 0.90 | 0.89 | 0.87 | 0.89 | 0.90 | 0.88 | 0.87 | 0.85 | 0.86 | 0.84 | 0.85 | | | | |
| Assistant Professor | 0.91 | 0.92 | 0.91 | 0.89 | 0.91 | 0.91 | 0.90 | 0.91 | 0.88 | 0.89 | 0.88 | 0.90 | | | | |
| All | 0.88 | 0.90 | 0.89 | 0.87 | 0.88 | 0.89 | 0.87 | 0.86 | 0.84 | 0.84 | 0.84 | 0.84 | | | | |

Iowa State University
Peer Land Grant Universities Faculty Salary Comparisons
2009-2010 through 2019-2020

| COLLEGE/DEPARTMENT | 2009-2010 | 2010-2011 | 2011-2012 | 2012-2013 | 2013-2014 | 2014-2015 | 2015-2016 | 2016-2017 | 2017-2018 | 2018-2019 | 2019-2020 | | | PEER | |
|---|-----------|-----------|-----------|-----------|-----------|-----------|-----------|-----------|-----------|-----------|------------------------------|-----------------------------|-------|-------------------|------------------|
| | | | | | | | | | | | ISU | | | AVERAGE SALARY | MEDIAN SALARY |
| | | | | | | | | | | | AVERAGE SALARY & INDEX | MEDIAN SALARY & INDEX | COUNT | | |
| -COLLEGE OF VETERINARY MEDICINE- | | | | | | | | | | | | | | | |
| Average Salaries | | | | | | | | | | | | | | | |
| Professor | \$120,425 | \$122,756 | \$121,724 | \$126,092 | \$127,321 | \$128,753 | \$132,319 | \$136,497 | \$136,506 | \$140,661 | \$141,627 | \$133,477 | 40 | \$151,112 | \$141,889 |
| Associate Professor | \$93,538 | \$93,976 | \$94,363 | \$95,374 | \$96,985 | \$99,127 | \$100,499 | \$106,573 | \$107,530 | \$110,797 | \$111,613 | \$110,042 | 25 | \$121,457 | \$117,621 |
| Assistant Professor | \$81,890 | \$84,321 | \$85,450 | \$89,904 | \$91,762 | \$94,080 | \$95,704 | \$97,744 | \$97,743 | \$99,008 | \$103,468 | \$98,019 | 34 | \$104,799 | \$103,209 |
| All | \$101,303 | \$103,553 | \$103,440 | \$107,182 | \$108,296 | \$109,670 | \$112,144 | \$115,941 | \$116,452 | \$119,033 | \$120,943 | \$115,382 | 99 | \$127,718 | \$122,477 |
| Index | | | | | | | | | | | | | | | |
| Professor | 1.05 | 1.11 | 1.09 | 1.04 | 1.05 | 1.00 | 1.01 | 1.01 | 0.94 | 0.94 | 0.94 | 0.94 | | | |
| Associate Professor | 1.04 | 1.07 | 1.07 | 0.97 | 0.99 | 0.96 | 0.95 | 0.98 | 0.96 | 0.96 | 0.92 | 0.94 | | | |
| Assistant Professor | 1.02 | 1.09 | 1.07 | 1.06 | 1.10 | 1.06 | 1.09 | 1.07 | 1.02 | 1.00 | 0.99 | 0.95 | | | |
| All | 1.04 | 1.09 | 1.08 | 1.02 | 1.04 | 1.00 | 1.01 | 1.02 | 0.96 | 0.96 | 0.95 | 0.94 | | | |

**Iowa State University
Peer Land Grant Universities Faculty Salary Comparisons
2009-2010 through 2019-2020**

| COLLEGE/DEPARTMENT | 2009-2010 | 2010-2011 | 2011-2012 | 2012-2013 | 2013-2014 | 2014-2015 | 2015-2016 | 2016-2017 | 2017-2018 | 2018-2019 | 2019-2020 | | | PEER | |
|-----------------------------|-----------|-----------|-----------|-----------|-----------|-----------|-----------|-----------|-----------|-----------|------------------------------|-----------------------------|-------|-------------------|------------------|
| | | | | | | | | | | | ISU | | | AVERAGE SALARY | MEDIAN SALARY |
| | | | | | | | | | | | AVERAGE SALARY & INDEX | MEDIAN SALARY & INDEX | COUNT | | |
| -UNIVERSITY SUMMARY- | | | | | | | | | | | | | | | |
| Average Salaries | | | | | | | | | | | | | | | |
| Professor | \$111,444 | \$113,945 | \$115,564 | \$119,829 | \$122,850 | \$125,475 | \$125,963 | \$129,753 | \$131,417 | \$131,478 | \$133,592 | \$131,487 | 576 | \$151,770 | \$147,322 |
| Associate Professor | \$82,058 | \$82,575 | \$83,273 | \$85,918 | \$88,880 | \$91,462 | \$92,629 | \$96,870 | \$98,853 | \$100,105 | \$100,345 | \$99,569 | 422 | \$113,791 | \$112,168 |
| Assistant Professor | \$72,086 | \$74,943 | \$76,761 | \$77,801 | \$80,302 | \$82,819 | \$82,865 | \$84,437 | \$85,588 | \$88,009 | \$91,089 | \$89,958 | 367 | \$99,397 | \$97,648 |
| All | \$92,016 | \$94,376 | \$95,708 | \$98,673 | \$101,644 | \$103,863 | \$103,738 | \$107,060 | \$107,940 | \$109,689 | \$111,886 | \$110,454 | 1,365 | \$125,947 | \$123,098 |
| Index | | | | | | | | | | | | | | | |
| Professor | 0.95 | 0.98 | 0.97 | 0.94 | 0.95 | 0.94 | 0.92 | 0.92 | 0.90 | 0.88 | 0.88 | 0.89 | | | |
| Associate Professor | 0.95 | 0.97 | 0.97 | 0.94 | 0.94 | 0.95 | 0.93 | 0.92 | 0.91 | 0.90 | 0.88 | 0.89 | | | |
| Assistant Professor | 0.95 | 0.97 | 0.95 | 0.93 | 0.94 | 0.94 | 0.93 | 0.94 | 0.92 | 0.91 | 0.92 | 0.92 | | | |
| All | 0.95 | 0.98 | 0.97 | 0.94 | 0.94 | 0.94 | 0.93 | 0.92 | 0.91 | 0.89 | 0.89 | 0.90 | | | |

Footnotes

**Iowa State University
Peer Land Grant Universities Faculty Salary Comparisons
2009-2010 through 2019-2020**

Footnotes

- ¹ Beginning with the 2014-15 report, departments that are administered by two colleges include the salary average and headcount for the entire department reported the same way in both colleges. In previous years, ISU faculty were divided into the college where they held rank. Because we use the CIP code to determine departments, we no longer separate faculty by college. This may affect the indices for some colleges. The following departments are reported in two colleges: Ag & Biosystems Engineering, Biochemistry, Biophysics and Molecular Biology, Ecology, Evolution, and Organismal Biology, Food Science and Human Nutrition, Genetics, Development, and Cell Biology, and Sociology. Economics appears in two colleges but there are two CIP codes used and therefore, they are not the same in the two colleges.
- ² Beginning 2004-2005, the department of Industrial Education and Technology was discontinued; faculty were moved to the department of Agricultural and Biosystems Engineering in the College of Agriculture.
- ⁴ Beginning July 1, 2007, the department of Health and Human Performance was changed to Kinesiology.
- ⁵ Beginning July 1, 2010, the department of Logistics Operations and Management Information Systems was changed to Supply Chain and Information Management.
- ⁶ Beginning July 1, 2010, the department of Music was changed to Music and Theatre.
- ⁷ Beginning July 1, 2011, the department of Plant Pathology was changed to Plant Pathology and Microbiology.
- ⁸ Beginning July 1, 2012, the department of Art and Design was divided into four departments – Integrated Studio Arts, Industrial Design, Interior Design and Graphic Design. There was not sufficient peer data available to separate these departments so they are combined in this report.
- ⁹ Beginning 2001-2002, the departments of Family and Consumer Sciences Education and Studies, Hotel Restaurant and Institution Management, and Textiles and Clothing are combined into the Department of Apparel, Educational Studies and Hospitality Management. In 2012, the name of the department was changed to Apparel, Events, and Hospitality Management.
- ¹⁰ Beginning July 1, 2012, the departments of Curriculum and Instruction and Educational Leadership and Policy Studies were combined into the School of Education.
- ¹¹ Beginning July 1, 2006, the department of Foreign Languages and Literature was changed to World Languages and Cultures.
- ¹² Beginning July 1, 2016, Anthropology was moved to the department of World Languages and Cultures.
- ¹³ Beginning July 1, 2019, Supply Chain and Information Management divided into Information Management and Business Analytics and Supply Chain Management