

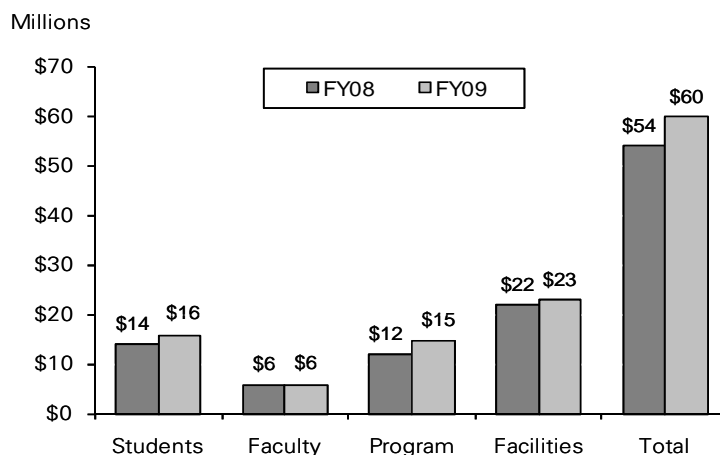
GENERAL FUND OPERATING REVENUES AND EXPENDITURES (JULY-JUNE)

Revenues	FY2009 Revised Budget	Actual FY2009 YTD	FY2009 Actual % to Budget	YTD Difference FY09-FY08
State Appropriations	276,483,152	276,483,151	100.0%	9,125,044
Tuition and Fees	211,397,000	211,130,075	99.9%	20,035,329
Reimbursed Indirect Cost	16,000,000	16,804,534	105.0%	(1,369,638)
Interest	1,100,000	1,301,018	118.3%	(755,540)
Federal Support	12,828,617	12,828,617	100.0%	0
Other Income	2,200,000	2,239,390	101.8%	582,418
Total Revenues	\$520,008,769	\$520,786,785	100.1%	\$27,617,613
Expenditures	\$520,008,769	\$519,984,097	100.0%	\$37,360,767

ISU FOUNDATION FUNDRAISING RESULTS COLLEGE/UNIT REPORT (JULY-JUNE)

	FY09 Target (\$)	FY09 YTD Production	% of Goal
Agriculture & Life Sciences	25,000,000	17,930,309	71.7%
Business	7,000,000	7,126,297	101.8%
Design	1,300,000	2,322,953	178.7%
Engineering	23,000,000	25,443,973	110.6%
Human Sciences	7,000,000	15,302,229	218.6%
Liberal Arts and Sciences	12,000,000	13,597,519	113.3%
Veterinary Medicine	6,250,000	5,978,290	95.7%
Alumni Association	500,000	1,459,122	291.8%
Athletics	14,000,000	14,304,886	102.2%
Extension	500,000	4,557,462	911.5%
Iowa State Center	166,000	121,748	73.3%
Reiman Gardens	300,000	1,293,759	431.3%
Student Affairs	5,000,000	10,060,226	201.2%
University Library	1,000,000	911,426	91.1%
University Museums	300,000	272,272	90.8%
Other	21,684,000	8,227,287	37.9%
Less: Interdisciplinary Gifts		(1,160,893)	
Total	\$125,000,000	\$127,748,865	102.2%

GIFT FUNDS EXPENDED BY ISU



SPONSORED FUNDING AWARDED (JULY-JUNE)

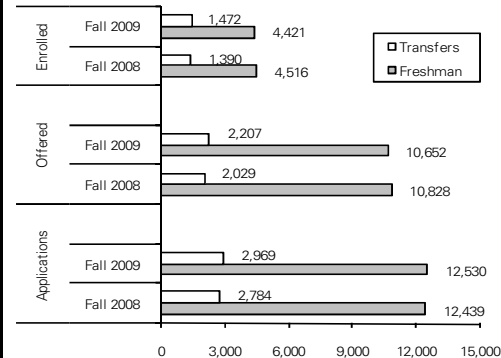
	FY2008 YTD	FY2009 YTD	% Change	FEDERAL (cont.)	FY2008 YTD	FY2009 YTD
FEDERAL				FEDERAL (cont.)		
USDA-Sponsored Projects	23,606,376	16,447,563	-30.3%	Interior	294,953	333,635
USDA-Directed Funds	1,439,317	4,120,436	186.3%	Environmental Protection Agency	284,807	854,432
USDA-Formula Funds	17,167,808	15,098,133	-12.1%	Other-Directed Funds	0	804,030
Energy	31,246,121	28,091,177	-10.1%	Other-Sponsored Projects	2,679,517	2,864,187
Health & Human Svcs-Sponsored Proj.	20,920,178	16,210,962	-22.5%	Total Federal	\$151,601,525	\$151,978,939
Health & Human Svcs-Directed Funds	0	383,187	N/A	NON-FEDERAL		
National Science Foundation	19,819,541	28,171,325	42.1%	Business and Corporations	35,229,610	39,365,249
Education-Sponsored Projects	1,920,970	3,367,703	75.3%	State and Local Government	30,803,746	33,034,881
Education-Financial Aid	16,237,188	17,499,969	7.8%	Universities and Colleges	12,694,886	14,566,162
Defense-Sponsored Projects	5,121,485	5,579,364	8.9%	ISU Foundation*	35,580,475	37,444,699
Defense-Directed Funds	1,743,000	1,741,700	-0.1%	Other	4,487,380	3,565,019
Transportation-Sponsored Projects	2,755,160	5,382,647	95.4%	External Foundations & Assoc.	3,613,672	25,114,256
Transportation-Directed Funds	1,712,306	789,870	-53.9%	Individuals	125,940	160,000
NASA	2,675,827	1,369,318	-48.8%	Total Non-Federal	\$122,535,709	\$153,250,266
Commerce-Sponsored Projects	1,976,971	2,301,580	16.4%	GRAND TOTAL	\$274,137,234	\$305,229,205
Commerce-Directed Funds	0	567,721	N/A			

*In FY08, entry included all funding flowing through the ISU Foundation, regardless of source. In FY09, some funding flowing through the ISU Foundation was captured in other categories. Also, FY08 Foundation data was expenditures; FY09 data was based on awards received.

APPLICATIONS AND ADMISSIONS AS OF AUGUST 1 FOR FALL 2009

	Applications		Admissions Offered		Admissions Enrolled	
	Fall 2008	Fall 2009	Fall 2008	Fall 2009	Fall 2008	Fall 2009
Undergraduate						
Freshman	12,439	12,530	10,828	10,652	4,516	4,421
Transfers	2,784	2,969	2,029	2,207	1,390	1,472
Total	15,223	15,499	12,857	12,859	5,906	5,893
Percent Non-residents	55.2%	55.0%	52.9%	52.8%	32.2%	32.2%
Veterinary Medicine*	947	986	141	173	127	122
Percent Non-residents	88.0%	88.0%	54.6%	61.3%	52.0%	47.5%
Graduate						
Domestic	1,361	1,568	705	849	not reported	
International	3,967	4,031	460	469	not reported	
Total	5,328	5,599	1,165	1,318		
Percent Non-residents	90.2%	89.1%	71.6%	70.4%		

*Does not include students enrolled in the Nebraska-Lincoln Institute of Agriculture and Natural Resources (UNL) Program.



**INDEX OF AVERAGE ISU FACULTY SALARIES
COMPARED TO PEER LAND-GRANT UNIVERSITIES**

FY	Professor	Associate Professor	Assistant Professor	All Ranks
1995	1.01	1.03	0.98	1.01
1996	1.01	1.02	0.97	1.01
1997	1.00	1.00	0.97	0.99
1998	1.00	1.01	0.97	1.00
1999	0.99	1.00	0.97	0.99
2000	0.98	1.00	0.99	0.99
2001	0.97	0.98	0.98	0.98
2002	0.96	0.98	0.97	0.97
2003	0.95	0.97	0.96	0.96
2004	0.96	0.97	0.96	0.96
2005	0.93	0.97	0.96	0.95
2006	0.94	0.96	0.95	0.95
2007	0.93	0.94	0.95	0.94
2008	0.95	0.96	0.94	0.95
2009	0.96	0.98	0.96	0.97

INDEX OF AVERAGE FACULTY SALARIES

Women Compared to Men

FY	Prof	Assoc Prof	Asst Prof
2000	0.97	0.96	1.00
2001	0.97	0.97	1.00
2002	0.98	0.97	0.99
2003	0.98	0.97	0.98
2004	0.98	0.97	0.99
2005	0.98	0.98	0.98
2006	0.99	0.98	0.98
2007	0.98	0.96	1.00
2008	0.98	0.98	1.00
2009	0.98	0.98	1.01

Minority Compared to Non-Minority

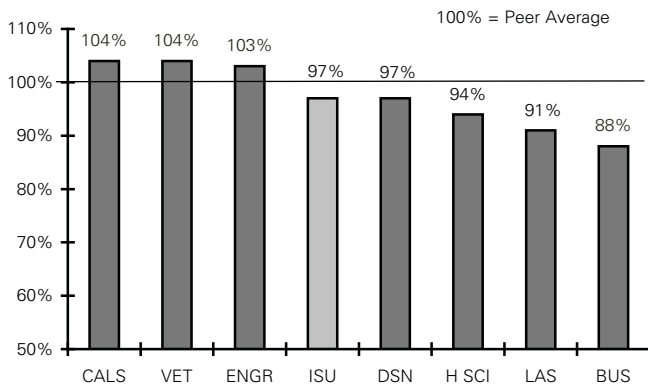
FY	Prof	Assoc Prof	Asst Prof
2000	0.98	0.98	1.02
2001	0.97	0.99	1.00
2002	0.97	0.99	1.02
2003	0.99	1.01	1.01
2004	1.00	1.01	1.00
2005	0.98	1.00	1.00
2006	0.97	1.01	0.99
2007	0.99	0.99	1.00
2008	0.99	1.01	0.99
2009	0.97	0.97	0.99

**INDEX OF AVERAGE ISU P & S SALARIES COMPARED
TO MARKET COMPARISON (based on benchmark positions)**

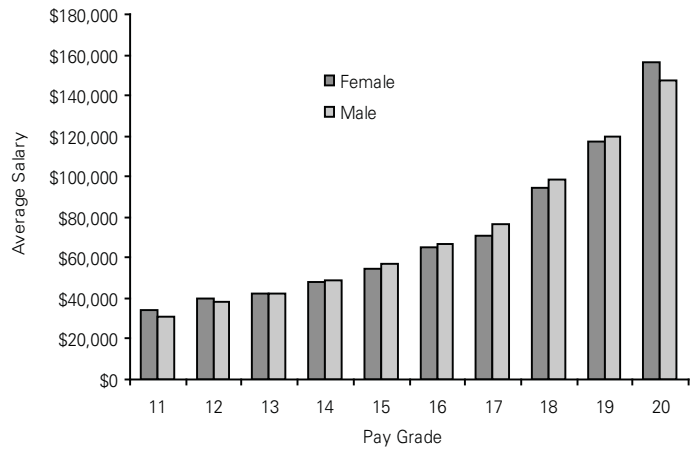
FY	Number of Benchmark Positions	Index*
2004	142	0.983
2005	142	0.980
2006	140	0.982
2007	132	0.960
2008	137	0.986
2009	175	0.993

*ISU/MKT weighted ratio

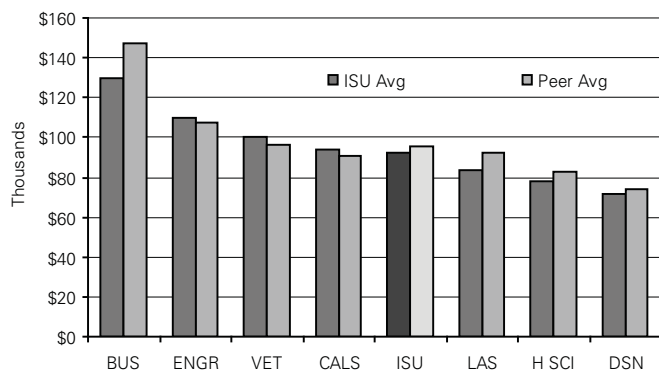
**IOWA STATE AND PEER LAND-GRANT UNIVERSITIES
FACULTY SALARY COMPARISONS BY COLLEGE,
2008-2009 (three ranks combined)**



**DISTRIBUTION OF P & S STAFF BY PAY GRADE, GENDER
AND AVERAGE SALARY, 2008-2009**



**IOWA STATE AND PEER LAND-GRANT UNIVERSITIES
FACULTY SALARY COMPARISONS BY COLLEGE,
2008-2009 (three ranks combined)**



**DISTRIBUTION OF MINORITY/NON-MINORITY P & S BY
PAY GRADE AND AVERAGE SALARY, 2008-2009**

