

GENERAL FUND OPERATING REVENUES AND EXPENDITURES (JULY-JUNE)

	FY2008 Approved Budget	Actual FY2008 YTD	FY2008 Actual % to Budget	YTD Difference FY08-FY07
Revenues				
State Appropriations	\$267,358,107	\$267,358,107	100.0%	\$25,194,127
Tuition and Fees	182,354,627	191,094,747	104.8%	12,614,337
Reimbursed Indirect Cost	17,299,180	18,174,171	105.1%	1,113,942
Interest	1,820,000	2,056,558	113.0%	215,274
Federal Support	12,828,617	12,828,617	100.0%	(96,756)
Sales and Services	10,000	0	0.0%	0
Other Income	1,511,881	1,656,972	109.6%	8,233
Total Revenues	\$483,182,412	\$493,169,172	102.1%	\$39,049,157
Expenditures	\$483,182,412	\$482,623,330	99.9%	\$36,836,572

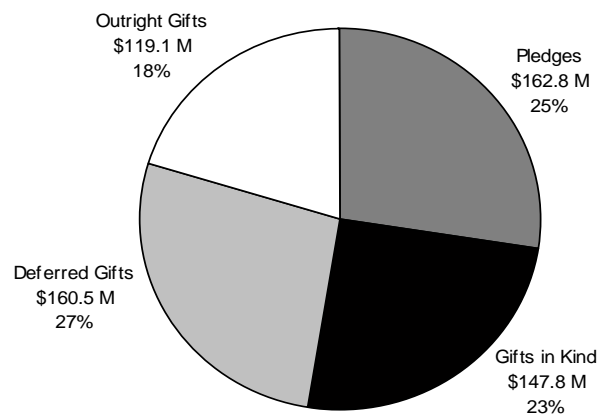
ISU FOUNDATION FUNDRAISING RESULTS COLLEGE/UNIT REPORT (JULY-JUNE)

	FY08 Target (\$)	FY08 YTD Production
Agriculture & Life Sciences	18,000,000	23,903,040
Business	7,000,000	10,050,255
Design	1,250,000	1,196,447
Engineering	20,000,000	20,904,222
Human Sciences	4,500,000	4,191,346
Liberal Arts and Sciences	10,000,000	22,745,559
Veterinary Medicine	5,680,000	14,083,800
Alumni Association	500,000	1,462,401
Athletics	20,600,000	17,280,595
Extension	500,000	2,448,650
Iowa State Center	166,000	115,143
Reiman Gardens	300,000	1,430,665
Student Affairs	2,500,000	11,801,860
University Library	1,000,000	915,505
University Museums	300,000	459,583
Other	17,704,000	7,065,015
Less: Interdisciplinary Gifts		(4,670,000)
Total	\$110,000,000	\$135,384,086

CAMPAIGN PRODUCTION

Goal: \$800 Million

Gifts and Commitments: \$590.2 Million

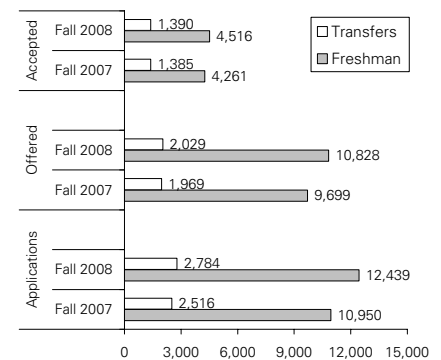


SPONSORED FUNDING AWARDED (JULY-JUNE)

FEDERAL	FY2007	FY2008	% Change	FEDERAL (cont.)	FY2007	FY2008	% Change
USDA-Sponsored Projects	\$14,230,567	\$23,606,376	65.9%	Environmental Protection Agency	\$ 355,909	\$ 284,807	-20.0%
Formula Funds	21,291,638	17,167,808	-19.4%	Other	2,386,315	2,679,517	12.3%
Directed Funds	6,479,760	1,439,317	-77.8%	Total Federal	\$157,801,441	\$151,601,525	-3.9%
Energy	31,182,202	31,246,121	0.2%	NON-FEDERAL			
Health & Human Services	17,964,776	20,920,178	16.5%	ISU Foundation	30,988,043	35,580,475	14.8%
National Science Foundation	20,891,993	19,819,541	-5.1%	Business and Corporations	27,453,739	35,229,610	28.3%
Education-Sponsored Projects	3,602,903	1,920,970	-46.7%	State and Local Government	37,142,909	30,803,746	-17.1%
Financial Aid	17,938,341	16,237,188	-9.5%	Universities and Colleges	10,927,184	12,694,886	16.2%
Defense-Sponsored Projects	4,479,189	5,121,485	14.3%	Other	3,850,266	4,487,380	16.5%
Directed Funds	6,919,900	1,743,000	-74.8%	External Foundations & Assoc.	3,660,275	3,613,672	-1.3%
Transportation	5,350,681	4,467,466	-16.5%	Individuals	130,000	125,940	-3.1%
NASA	1,422,037	2,675,827	88.2%	Total Non-Federal	\$114,152,416	\$122,535,709	7.3%
Commerce	2,894,338	1,976,971	-31.7%	GRAND TOTAL	\$271,953,857	\$274,137,234	0.8%
Interior	410,892	294,953	-28.2%				

APPLICATIONS AND ADMISSIONS AS OF AUGUST 1 FOR FALL 2008

	Applications		Admissions Offered		Admissions Accepted	
	Fall 2007	Fall 2008	Fall 2007	Fall 2008	Fall 2007	Fall 2008
Undergraduate						
Freshman	10,950	12,439	9,699	10,828	4,261	4,516
Transfers	2,516	2,784	1,969	2,029	1,385	1,390
Total	13,466	15,223	11,668	12,857	5,646	5,906
Percent Non-residents	50.3%	55.2%	48.6%	52.9%	27.6%	32.2%
Veterinary Medicine*	802	947	205	141	132	127
Percent Non-residents	85.3%	88.0%	66.8%	54.6%	50.8%	52.0%
Graduate						
Domestic	1,471	1,361	720	705	not reported	not reported
International	3,556	3,967	467	460	not reported	not reported
Total	5,027	5,328	1,187	1,165		
Percent Non-residents	88.0%	90.2%	70.2%	71.6%		



*Does not include students enrolled in the Nebraska-Lincoln Institute of Agriculture and Natural Resources (UNL) Program.

SALARY INCREASE FUND ALLOCATIONS

	FY2008	FY2009
State Appropriations	19,163,838	16,134,839
Tuition Revenue	—	—
Reallocations	656,224	1,410,443
Other Income	—	—
Total Salary Increase Funds	\$19,820,062	\$17,545,282

Total Faculty and P&S Increases 4.53%

AVERAGE A&B-BASE SALARY INCREASE BY RANK

Rank	Total	Women	Men	Minority	Non-Minority
Prof	5.74%	6.07%	5.67%	6.20%	5.65%
Assoc Prof	5.87%	5.63%	6.00%	6.88%	5.59%
Asst Prof	4.95%	5.87%	4.39%	4.68%	5.05%
Instr	3.44%	3.87%	3.09%	2.93%	3.48%
Lectr	4.22%	4.24%	4.18%	3.16%	4.34%
All A & B	5.46%	5.49%	5.44%	5.71%	5.40%

AVERAGE P&S SALARY INCREASE BY PAY GRADE

Pay Grade	Total	Women	Men	Minority	Non-Minority
P11	4.02%	3.73%	5.12%	3.77%	4.04%
P12	3.87%	3.77%	4.09%	3.40%	3.91%
P13	3.98%	4.04%	3.87%	4.30%	3.95%
P14	4.11%	4.14%	4.08%	3.46%	4.18%
P15	3.86%	4.14%	3.61%	3.81%	3.86%
P16	4.04%	4.36%	3.80%	4.20%	4.02%
P17	3.80%	4.08%	3.64%	3.67%	3.81%
P18	3.84%	3.53%	4.08%	3.92%	3.83%
P19	4.10%	3.93%	4.19%	5.50%	4.01%
P20	4.46%	5.55%	3.82%	5.43%	4.12%
K-Base	2.41%	2.80%	2.21%	1.50%	2.55%
All Grades	3.95%	4.06%	3.83%	3.90%	3.96%

INDEX OF AVERAGE FACULTY SALARIES

Women Compared to Men

FY	Prof	Assoc Prof	Asst Prof
2000	0.97	0.96	1.00
2001	0.97	0.97	1.00
2002	0.98	0.97	0.99
2003	0.98	0.97	0.98
2004	0.98	0.97	0.99
2005	0.98	0.98	0.98
2006	0.99	0.98	0.98
2007	0.98	0.96	1.00
2008	0.98	0.98	1.00

Minority Compared to Non-Minority

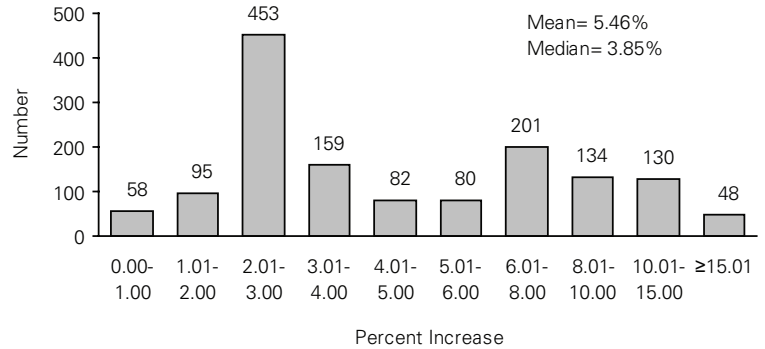
FY	Prof	Assoc Prof	Asst Prof
2000	0.98	0.98	1.02
2001	0.97	0.99	1.00
2002	0.97	0.99	1.02
2003	0.99	1.01	1.01
2004	1.00	1.01	1.00
2005	0.98	1.00	1.00
2006	0.97	1.01	0.99
2007	0.99	0.99	1.00
2008	0.99	1.01	0.99

INDEX OF AVERAGE ISU FACULTY SALARIES COMPARED TO PEER LAND-GRANT UNIVERSITIES

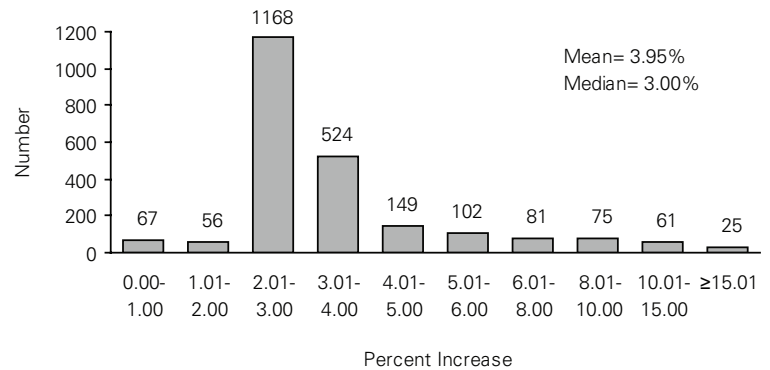
FY	Professor	Associate Professor	Assistant Professor	All Ranks
1995	1.01	1.03	0.98	1.01
1996	1.01	1.02	0.97	1.01
1997	1.00	1.00	0.97	0.99
1998	1.00	1.01	0.97	1.00
1999	0.99	1.00	0.97	0.99
2000	0.98	1.00	0.99	0.99
2001	0.97	0.98	0.98	0.98
2002	0.96	0.98	0.97	0.97
2003	0.95	0.97	0.96	0.96
2004	0.96	0.97	0.96	0.96
2005	0.93	0.97	0.96	0.95
2006	0.94	0.96	0.95	0.95
2007	0.93	0.94	0.95	0.94
2008	0.95	0.96	0.94	0.95

DISTRIBUTION OF FY 2009 SALARY INCREASES

A & B - Base (N = 1,440)



P & S - Base (N = 2,308)



IOWA STATE AND PEER LAND-GRANT UNIVERSITIES FACULTY SALARY COMPARISONS BY COLLEGE, 2007-2008 (three ranks combined)

