

GENERAL FUND OPERATING REVENUES AND EXPENDITURES (JULY-APRIL)

Revenues	FY2009 Revised Budget	Actual FY2009 YTD	FY2009 Actual % to Budget	YTD Difference FY09-FY08
State Appropriations	276,483,152	232,569,259	84.1%	9,770,836
Tuition and Fees	211,397,000	210,957,409	99.8%	20,403,300
Reimbursed Indirect Cost	16,000,000	11,339,023	70.9%	(3,372,034)
Interest	1,100,000	1,193,794	108.5%	(590,015)
Federal Support	12,828,617	9,950,368	77.6%	77,720
Other Income	2,200,000	2,027,516	92.2%	379,657
Total Revenues	\$520,008,769	\$468,037,369	90.0%	\$26,669,464
Expenditures	\$520,008,769	\$420,152,891	80.8%	\$27,260,260

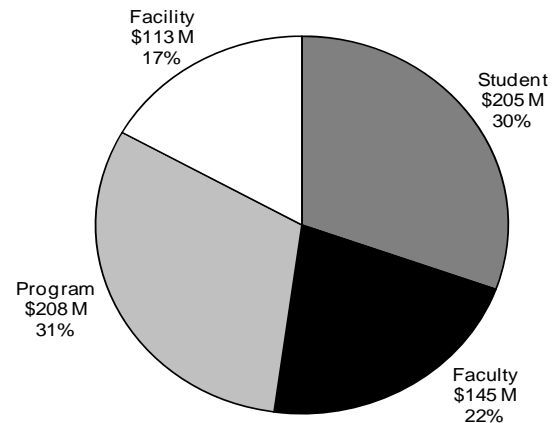
ISU FOUNDATION FUNDRAISING RESULTS COLLEGE/UNIT REPORT (JULY-APRIL)

	FY09 Target (\$)	FY09 YTD Production	% of Goal
Agriculture & Life Sciences	25,000,000	13,169,675	52.7%
Business	7,000,000	5,913,975	84.5%
Design	1,300,000	2,229,903	171.5%
Engineering	23,000,000	12,883,079	56.0%
Human Sciences	7,000,000	4,401,074	62.9%
Liberal Arts and Sciences	12,000,000	13,379,896	111.5%
Veterinary Medicine	6,250,000	5,805,492	92.9%
Alumni Association	500,000	893,612	178.7%
Athletics	14,000,000	10,447,895	74.6%
Extension	500,000	4,536,164	907.2%
Iowa State Center	166,000	94,164	56.7%
Reiman Gardens	300,000	1,201,763	400.6%
Student Affairs	5,000,000	9,783,565	195.7%
University Library	1,000,000	899,128	89.9%
University Museums	300,000	179,920	60.0%
Other	21,684,000	6,295,098	29.0%
Total	\$125,000,000	\$92,114,403	73.7%

CAMPAIGN PRODUCTION

Goal: \$800 Million

Gifts and Commitments: \$671 Million



SPONSORED FUNDING AWARDED (JULY-APRIL)

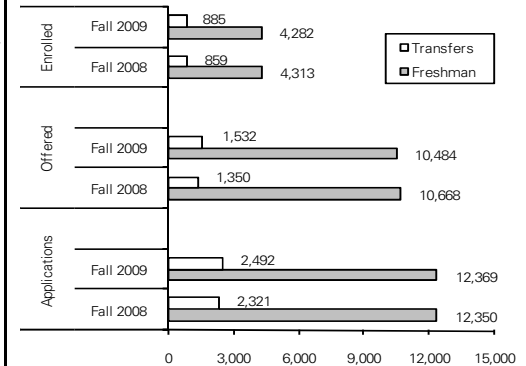
	FY2008 YTD	FY2009 YTD	% Change	FEDERAL (cont.)	FY2008 YTD	FY2009 YTD
FEDERAL						
USDA-Sponsored Projects	18,444,524	14,839,022	-19.5%	Interior	294,953	324,201
Directed Funds	1,439,317	4,120,436	186.3%	Environmental Protection Agency	284,807	789,011
Formula Funds	483,899	0	N/A	Other-Directed Funds	0	804,030
Energy	30,285,252	27,151,484	-10.3%	Other-Sponsored Projects	1,775,914	1,763,755
Health & Human Svcs-Sponsored Proj.	14,838,198	10,020,211	-32.5%	Total Federal	\$109,547,633	\$111,332,989
Directed Funds	0	383,187	N/A	NON-FEDERAL		
National Science Foundation	14,758,285	26,428,369	79.1%	Business and Corporations	28,829,391	20,581,094
Education-Sponsored Projects	1,471,036	1,838,191	25.0%	State and Local Government	21,865,011	27,211,505
Financial Aid	13,510,806	6,650,638	-50.8%	Universities and Colleges	10,259,951	12,542,965
Defense-Sponsored Projects	2,593,234	4,840,723	86.7%	ISU Foundation*	8,767,893	0
Directed Funds	1,743,000	1,741,700	-0.1%	Other	3,323,352	3,106,508
Transportation-Sponsored Projects	2,602,066	5,121,147	96.8%	External Foundations & Assoc.	2,769,351	2,435,070
Directed Funds	1,527,917	789,870	-48.3%	Individuals	125,000	160,000
NASA	1,525,219	962,378	-36.9%	Total Non-Federal	\$75,939,949	\$66,037,142
Commerce-Sponsored Projects	1,969,206	2,196,915	11.6%	GRAND TOTAL	\$185,487,582	\$177,370,131
Directed Funds	0	567,721	N/A			

*In FY08, entry included all funding flowing through the ISU Foundation, regardless of source. In FY09, funding flowing through the ISU Foundation will be categorized by original source.

APPLICATIONS AND ADMISSIONS AS OF MAY 1 FOR FALL 2009

	Applications		Admissions Offered		Admissions Enrolled	
	Fall 2008	Fall 2009	Fall 2008	Fall 2009	Fall 2008	Fall 2009
Undergraduate						
Freshman	12,350	12,369	10,668	10,484	4,313	4,282
Transfers	2,321	2,492	1,350	1,532	859	885
Total	14,671	14,861	12,018	12,016	5,172	5,167
Percent Non-residents	56.3%	55.8%	53.9%	53.8%	32.7%	32.5%
Veterinary Medicine*	962	975	125	156	110	107
Percent Non-residents	88.5%	88.0%	52.8%	58.3%	49.1%	43.0%
Graduate						
Domestic	1,076	1,277	487	597	not reported	not reported
International	3,935	4,053	374	418	not reported	not reported
Total	5,011	5,330	861	1,015		
Percent Non-residents	93.2%	92.1%	79.0%	78.4%		

*Does not include students enrolled in the Nebraska-Lincoln Institute of Agriculture and Natural Resources (UNL) Program.



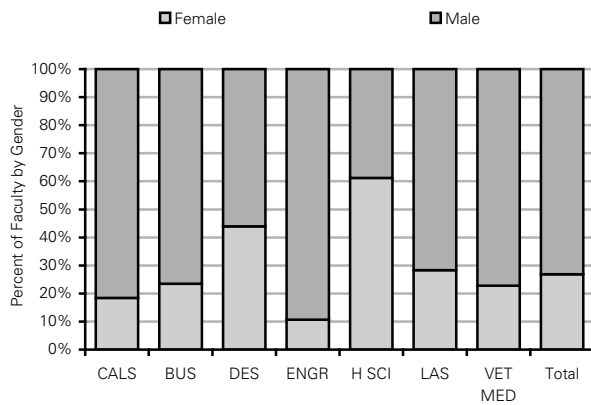
FACULTY BY GENDER AND TENURE STATUS

	1998-1999		2008-2009	
	Number	Percent	Number	Percent
Tenured				
Women	225	19.3%	248	25.1%
Men	938		739	
Total	1,163		987	
Tenure Eligible				
Women	113	40.9%	120	36.7%
Men	163		207	
Total	276		327	
Tenured & Tenure Eligible				
Women	338	23.5%	368	28.0%
Men	1,101		946	
Total	1,439		1,314	
Non Tenure Eligible				
Women	179	50.0%	218	53.3%
Men	179		191	
Total	358		409	
Total Faculty				
Women	517	28.8%	586	34.0%
Men	1,280		1,137	
Total	1,797		1,723	

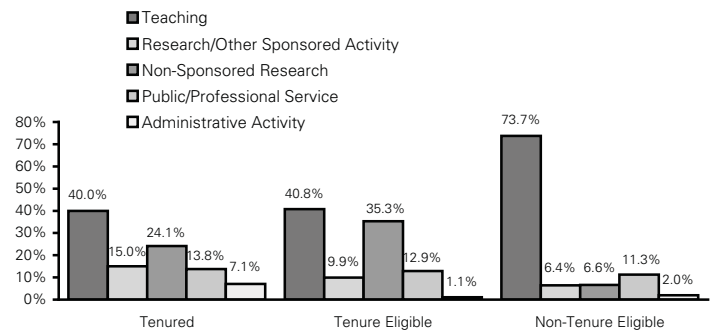
FACULTY BY RACE/ETHNICITY AND TENURE STATUS

	1998-1999		2008-2009	
	Number	Percent	Number	Percent
Tenured & Tenure Eligible				
African American	25	1.7%	22	1.7%
Am. Indian/Alaskan	7	0.5%	7	0.5%
Asian/Pacific Islander	117	8.1%	213	16.2%
Hispanic	23	1.6%	26	2.0%
Total Minority	172	12.0%	268	20.4%
White	1,267	88.0%	1,046	79.6%
Non Tenure Eligible				
African American	9	2.5%	11	2.7%
Am. Indian/Alaskan	1	0.3%	1	0.2%
Asian/Pacific Islander	17	4.7%	31	7.6%
Hispanic	9	2.5%	7	1.7%
Total Minority	36	10.1%	50	12.2%
White	322	89.9%	359	87.8%
Total Faculty				
African American	34	1.9%	33	1.9%
Am. Indian/Alaskan	8	0.4%	8	0.5%
Asian/Pacific Islander	134	7.5%	244	14.2%
Hispanic	32	1.8%	33	1.9%
Total Minority	208	11.6%	318	18.5%
White	1,589	88.4%	1,405	81.5%

TENURED AND TENURE ELIGIBLE FACULTY BY GENDER AND COLLEGE, 2008-2009



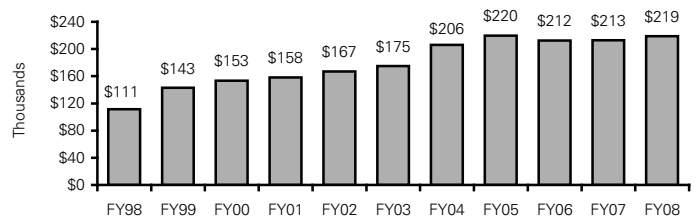
PERCENT OF EFFORT SPENT ON ACTIVITIES BY TENURE STATUS 2008-2009



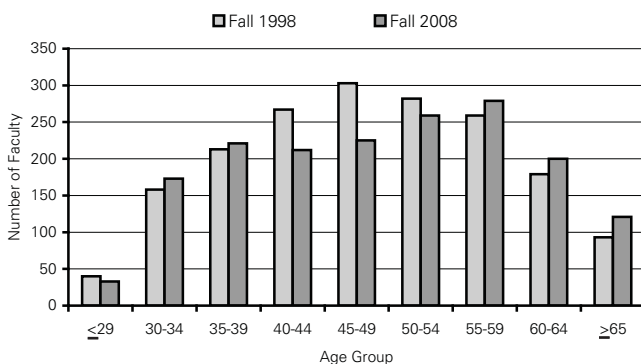
AVERAGE HOURS WORKED PER WEEK

	Academic Year				
	2001	2003	2005	2007	2009
Tenured Faculty	57.7	58.9	59.5	58.2	57.9
Tenure Eligible Faculty	59.6	57.4	57.8	58.7	60.9
Non-Tenure Eligible Faculty	58.0	54.7	52.1	53.4	54.0
Total Faculty	58.2	58.1	57.9	57.7	57.9

SPONSORED FUNDING PER FTE TENURE AND TENURE-ELIGIBLE FACULTY



ISU TOTAL FACULTY BY AGE FALL 1998 AND FALL 2008



FACULTY ARTICLES AND CITATIONS

