

#### GENERAL FUND OPERATING REVENUES AND EXPENDITURES (JULY-MARCH)

| Revenues                 | FY2009<br>Approved<br>Budget | Actual<br>FY2009<br>YTD | FY2009<br>Actual %<br>to Budget | YTD<br>Difference<br>FY09-FY08 |
|--------------------------|------------------------------|-------------------------|---------------------------------|--------------------------------|
| State Appropriations     | \$283,652,946                | \$210,612,315           | 74.3%                           | \$10,093,734                   |
| Tuition and Fees         | 203,877,810                  | 209,892,836             | 103.0%                          | 20,401,296                     |
| Reimbursed Indirect Cost | 15,397,070                   | 11,935,506              | 77.5%                           | (868,641)                      |
| Interest                 | 1,210,000                    | 1,044,773               | 86.3%                           | (512,785)                      |
| Federal Support          | 12,828,617                   | 8,828,613               | 68.8%                           | (473,196)                      |
| Other Income             | 2,011,881                    | 1,883,675               | 93.6%                           | 328,993                        |
| <b>Total Revenues</b>    | <b>\$518,978,324</b>         | <b>\$444,197,718</b>    | <b>85.6%</b>                    | <b>\$28,969,401</b>            |
| Expenditures             | \$518,978,324                | \$380,513,422           | 73.3%                           | \$24,625,322                   |

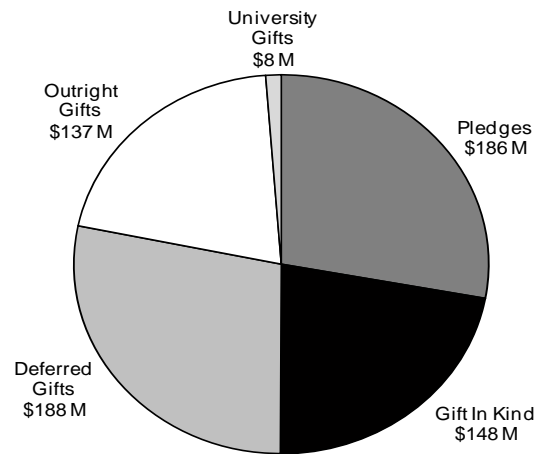
#### ISU FOUNDATION FUNDRAISING RESULTS COLLEGE/UNIT REPORT (JULY-MARCH)

|                             | FY09<br>Target (\$)  | FY09 YTD<br>Production |
|-----------------------------|----------------------|------------------------|
| Agriculture & Life Sciences | 25,000,000           | 12,713,912             |
| Business                    | 7,000,000            | 5,823,285              |
| Design                      | 1,300,000            | 2,205,441              |
| Engineering                 | 23,000,000           | 12,305,239             |
| Human Sciences              | 7,000,000            | 4,342,200              |
| Liberal Arts and Sciences   | 12,000,000           | 13,229,341             |
| Veterinary Medicine         | 6,250,000            | 5,612,051              |
| Alumni Association          | 500,000              | 715,194                |
| Athletics                   | 14,000,000           | 8,657,790              |
| Extension                   | 500,000              | 4,519,094              |
| Iowa State Center           | 166,000              | 61,909                 |
| Reiman Gardens              | 300,000              | 1,110,880              |
| Student Affairs             | 5,000,000            | 9,686,772              |
| University Library          | 1,000,000            | 870,267                |
| University Museums          | 300,000              | 77,036                 |
| Other                       | 21,684,000           | 5,798,269              |
| <b>Total</b>                | <b>\$125,000,000</b> | <b>\$87,728,680</b>    |

#### CAMPAIGN PRODUCTION

Goal: \$800 Million

Gifts and Commitments: \$667 Million



#### SPONSORED FUNDING AWARDED (JULY-MARCH)

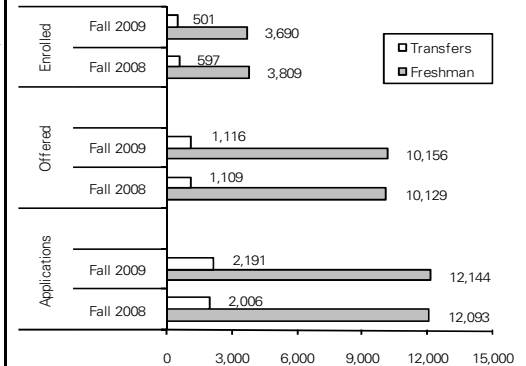
|                                     | FY2008<br>YTD | FY2009<br>YTD | %<br>Change | FEDERAL (cont.)                 | FY2008<br>YTD        | FY2009<br>YTD        |
|-------------------------------------|---------------|---------------|-------------|---------------------------------|----------------------|----------------------|
| <b>FEDERAL</b>                      |               |               |             |                                 |                      |                      |
| USDA-Sponsored Projects             | \$18,349,479  | \$14,812,262  | -19.3%      | Interior                        | \$ 202,618           | \$ 231,866           |
| Directed Funds                      | 1,439,317     | 4,120,436     | 186.3%      | Environmental Protection Agency | 269,808              | 189,011              |
| Energy                              | 13,583,747    | 24,636,810    | 81.4%       | Other-Directed Funds            | 0                    | 804,030              |
| Health & Human Svcs-Sponsored Proj. | 12,527,619    | 9,333,493     | -25.5%      | Other-Sponsored Projects        | 1,775,914            | 1,763,755            |
| Directed Funds                      | 0             | 383,187       | N/A         | <b>Total Federal</b>            | <b>\$84,647,974</b>  | <b>\$103,314,057</b> |
| National Science Foundation         | 12,013,540    | 24,770,512    | 106.2%      | <b>NON-FEDERAL</b>              |                      |                      |
| Education-Sponsored Projects        | 1,471,036     | 1,838,191     | 25.0%       | Business and Corporations       | 27,825,708           | 18,525,731           |
| Financial Aid                       | 13,453,541    | 6,650,638     | -50.6%      | State and Local Government      | 20,900,718           | 26,617,271           |
| Defense-Sponsored Projects          | 2,497,753     | 4,220,515     | 69.0%       | Universities and Colleges       | 8,428,262            | 11,892,314           |
| Directed Funds                      | 0             | 1,741,700     | N/A         | ISU Foundation*                 | 8,767,893            | 0                    |
| Transportation-Sponsored Projects   | 2,581,666     | 4,379,859     | 69.7%       | Other                           | 3,189,527            | 2,826,678            |
| Directed Funds                      | 1,104,306     | 614,870       | -44.3%      | External Foundations & Assoc.   | 2,526,846            | 2,339,070            |
| NASA                                | 1,408,424     | 832,955       | -40.9%      | Individuals                     | 125,000              | 160,000              |
| Commerce-Sponsored Projects         | 1,969,206     | 1,422,246     | -27.8%      | <b>Total Non-Federal</b>        | <b>\$71,763,954</b>  | <b>\$62,361,064</b>  |
| Directed Funds                      | 0             | 567,721       | N/A         | <b>GRAND TOTAL</b>              | <b>\$156,411,928</b> | <b>\$165,675,121</b> |

\*In FY08, entry included all funding flowing through the ISU Foundation, regardless of source. In FY09, funding flowing through the ISU Foundation will be categorized by original source.

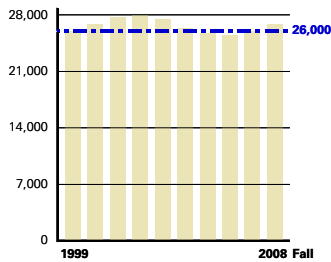
#### APPLICATIONS AND ADMISSIONS AS OF APRIL 1 FOR FALL 2009

|                             | Applications  |               | Admissions Offered |               | Admissions Enrolled |              |
|-----------------------------|---------------|---------------|--------------------|---------------|---------------------|--------------|
|                             | Fall 2008     | Fall 2009     | Fall 2008          | Fall 2009     | Fall 2008           | Fall 2009    |
| <b>Undergraduate</b>        |               |               |                    |               |                     |              |
| Freshman                    | 12,093        | 12,144        | 10,129             | 10,156        | 3,202               | 3,062        |
| Transfers                   | 2,006         | 2,191         | 1,109              | 1,116         | 267                 | 245          |
| <b>Total</b>                | <b>14,099</b> | <b>14,335</b> | <b>11,238</b>      | <b>11,272</b> | <b>3,469</b>        | <b>3,307</b> |
| Percent Non-residents       | 56.7%         | 56.2%         | 53.2%              | 54.5%         | 31.7%               | 30.0%        |
| <b>Veterinary Medicine*</b> | 961           | 975           | 145                | 125           | 74                  | 51           |
| Percent Non-residents       | 88.4%         | 88.0%         | 60.0%              | 50.4%         | 36.5%               | 41.2%        |
| <b>Graduate</b>             |               |               |                    |               |                     |              |
| Domestic                    | 1,007         | 1,195         | 419                | 468           | not reported        |              |
| International               | 3,882         | 4,086         | 256                | 286           | not reported        |              |
| <b>Total</b>                | <b>4,889</b>  | <b>5,281</b>  | <b>675</b>         | <b>754</b>    |                     |              |
| Percent Non-residents       | 93.8%         | 92.9%         | 78.4%              | 79.2%         |                     |              |

\*Does not include students enrolled in the Nebraska-Lincoln Institute of Agriculture and Natural Resources (UNL) Program.

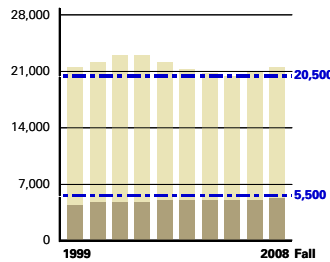


Targets are shown in blue



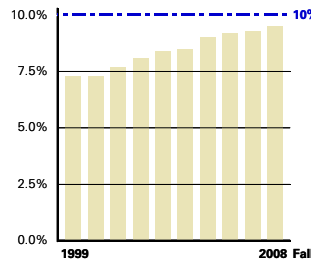
**1 Enrollment - Headcount**

All students



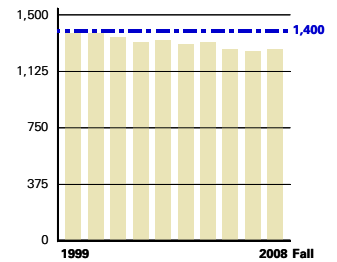
**2 Enrollment - Headcount**

Undergraduate target: 20,500 (light color)  
Graduate & Prof. target: 5,500 (dark color)



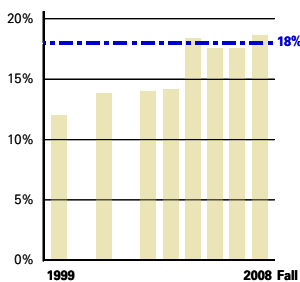
**3 U.S. Students of Color**

Percent of total enrollment  
African American, American Indian/Alaskan  
Native, Asian/Pacific Islander, & Hispanic



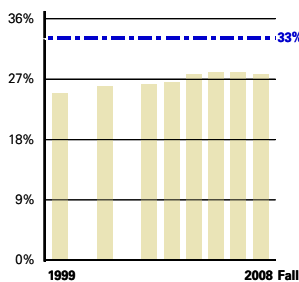
**4 Tenured & Tenure Eligible Faculty**

Full time equivalent



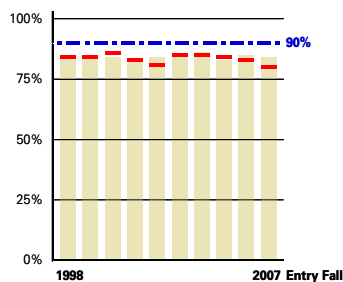
**5 Faculty of Color**

Percent of Tenured & Tenure Eligible Faculty  
African American, American Indian/Alaskan  
Native, Asian/Pacific Islander, & Hispanic



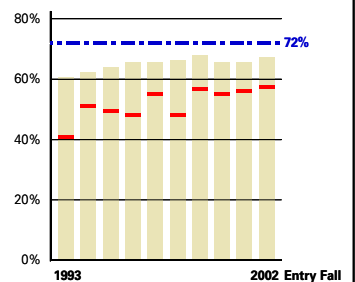
**6 Women Faculty**

Percent of Tenured & Tenure Eligible Faculty



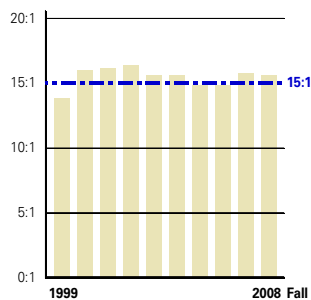
**7 One-Year Retention Rate**

Direct from high school undergraduates  
All students (light color)  
Students of color (red lines)



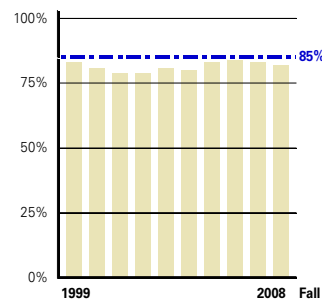
**8 Six-Year Graduation Rate**

Direct from high school undergraduates  
All students (light color)  
Students of color (red lines)



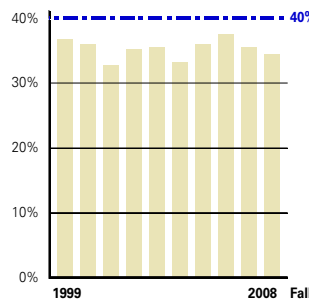
**9 Student-to-Faculty Ratio**

All full time equivalent students  
All full time equivalent instructional faculty



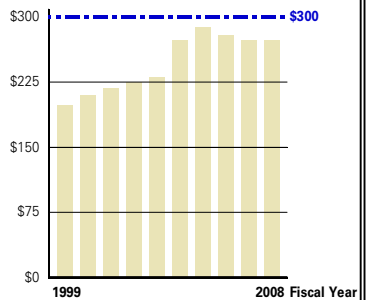
**10 Class Size - Under 50**

Percent of total class sections



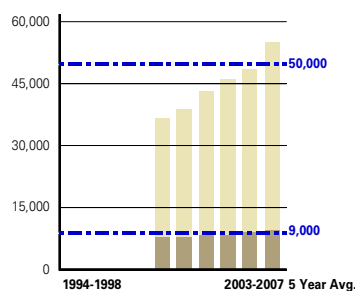
**11 Class Size - Under 20**

Percent of total class sections



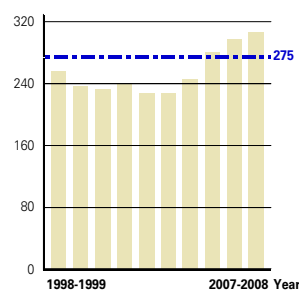
**17 Sponsored Funding Awards**

Millions of dollars



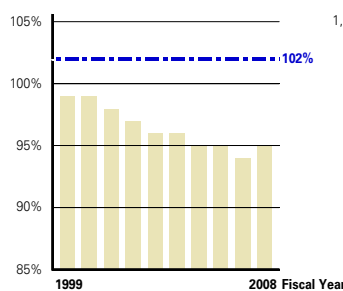
**18 Faculty Articles & Citations**

Articles published by ISU faculty & citations  
reported in ISI Index  
Citations (light color)  
Articles (dark color)



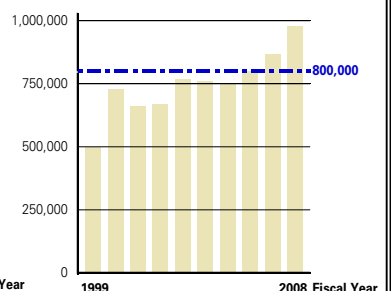
**19 Doctorate Degrees Awarded**

Total for fall, spring, and summer



**20 Faculty Salaries**

Comparative index  
At 100%, mean faculty salaries at ISU equal  
mean faculty salaries at peer institutions



**22 Iowans Served by ISU Extension**

Total people